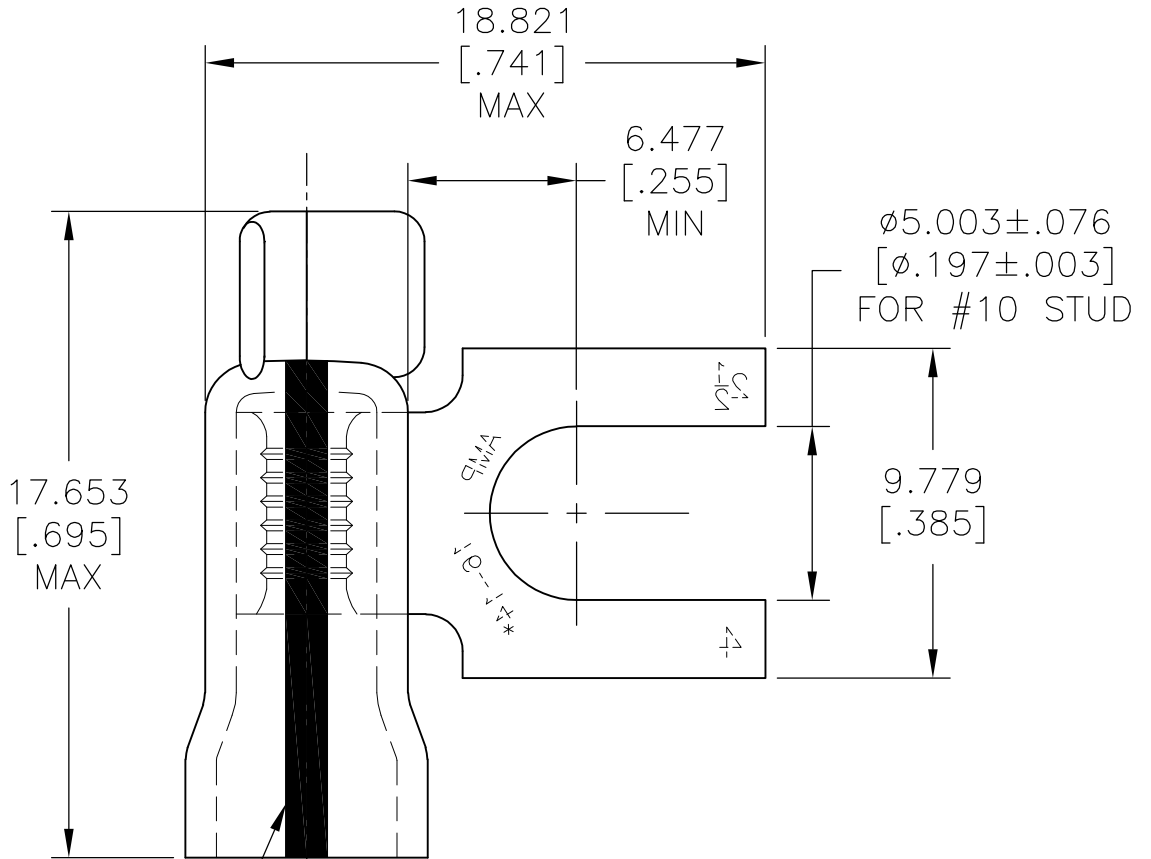


REVISIONS				
P	LTR	DESCRIPTION	DATE	APVD
	A1	REV PER ECO-17-002897	08MAR2017	RS DR



STRIPE COLOR: BLUE

- 1 TONGUE MATERIAL THICKNESS 0.787 ± 0.050 [0.031 ± 0.002].
- 2 FOR 2.921 [.115] TO 4.318 [.170] WIRE INSULATION DIA.
- 3 MATERIAL: BODY, COPPER PER ASTM B152
SLEEVE, PVC, NATURAL.
- 4 FINISH: BODY, 0.00254 [0.000100] MIN. EXT. THK.
TIN PLATE PER ASTM B545.

1000	LOOSE PIECE	322834
QTY.	PACKAGE TYPE	PART NUMBER

THIS DRAWING IS UNPUBLISHED. ALL RIGHTS RESERVED.

COPYRIGHT - By -

DIMENSIONS: mm [INCHES]	DWN GEO W GILBERT 9-17-54	MATERIAL	FINISH
	CHK E J FINK 9-22-54		
TOLERANCES UNLESS OTHERWISE SPECIFIED:	APVD R WITMYER 1-7-55	TE Connectivity	
	PRODUCT SPEC		
0 PLC ± -	APPLICATION SPEC	NAME WIRE TERMINAL PLASTI-GRIP	
1 PLC ± -		SLOTTED TONGUE FLAG, WIRE SIZE: 16-14	
2 PLC ± -	WEIGHT	SIZE	RESTRICTED TO
3 PLC ± 0.127 [.005]		A4	
4 PLC ± -		CAGE CODE	
ANGLES ± 5°		DRAWING NO	
		C-322834	
CUSTOMER DRAWING		SCALE	REV
		2:1	A1
		SHEET	1 OF 1