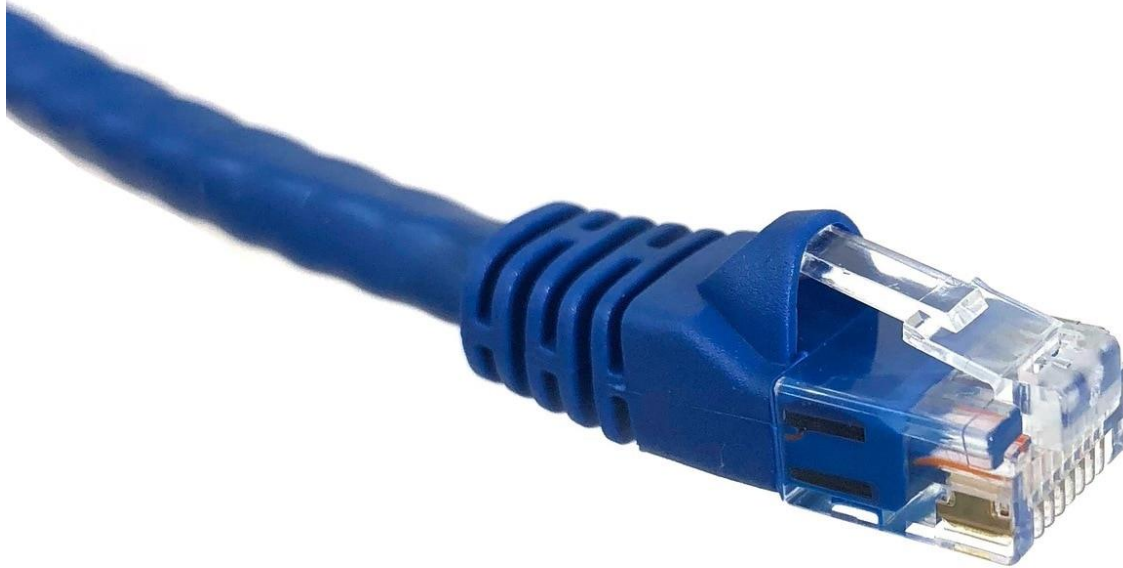


25ft Category 6 UTP RJ45 Patch Cable Blue (E08-025BL)



Features:

- Molded boots (snagless installation) and extra protection for the RJ45 connector and clip
- UTP (Unshielded Twisted Pair) patch cable with 24 AWG (American wire gauge) stranded pure copper. Pure copper conductors provide the best signal possible
- Our Cat6 Ethernet patch cables exceed the EIA/TIA-568-C standard
- Designed specifically for Gigabit Ethernet applications
- RJ45 plug features gold connectors to prevent corrosion thus ensuring a longer cable life

Limited Lifetime warranty

without us, you are just not connected!