

# FP Series Sealed Ultra Miniature Pushbutton Switches



A

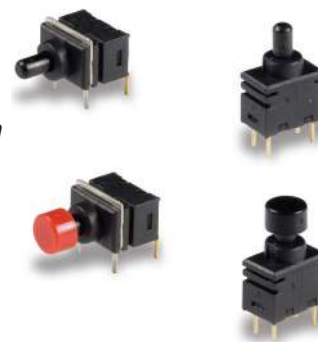
Pushbutton

## Features/Benefits

- Ultra-miniature pushbutton
- Multiple poles and throws
- Long life 100,000 cycles
- Vertical and right angle mount
- Sealed against soldering and cleaning processes
- Optional caps
- RoHS compliant

## Typical Applications

- Networking equipment
- High-end consumer
- Professional instrumentation
- Computer, Server, Modem & Data storage



## Specifications

CONTACT RATING: Max. 0.4 VA (28 V DC or V AC)  
 ELECTRICAL LIFE: 50,000 cycles (FP11 & FP21)  
 10,000 cycles (FP12 & FP22)  
 CONTACT RESISTANCE: (10mA @ 2 V DC) 80 mΩ max. initial  
 INSULATION RESISTANCE: 500MΩ min. @ 500 V DC - 1 minute  
 OPERATING TEMPERATURE: -20°C to 80°C  
 SOLDERABILITY: Per MIL-STD-202F method 208D, or  
 EIA RS-186E method 9  
 PACKAGING:  
 Tray pack - 25 pcs per tray (A1 type terminal)  
 - 100 pcs per tray (C1 type terminal)  
 Caps (optional) - Bulk bag; 100 caps per bag.

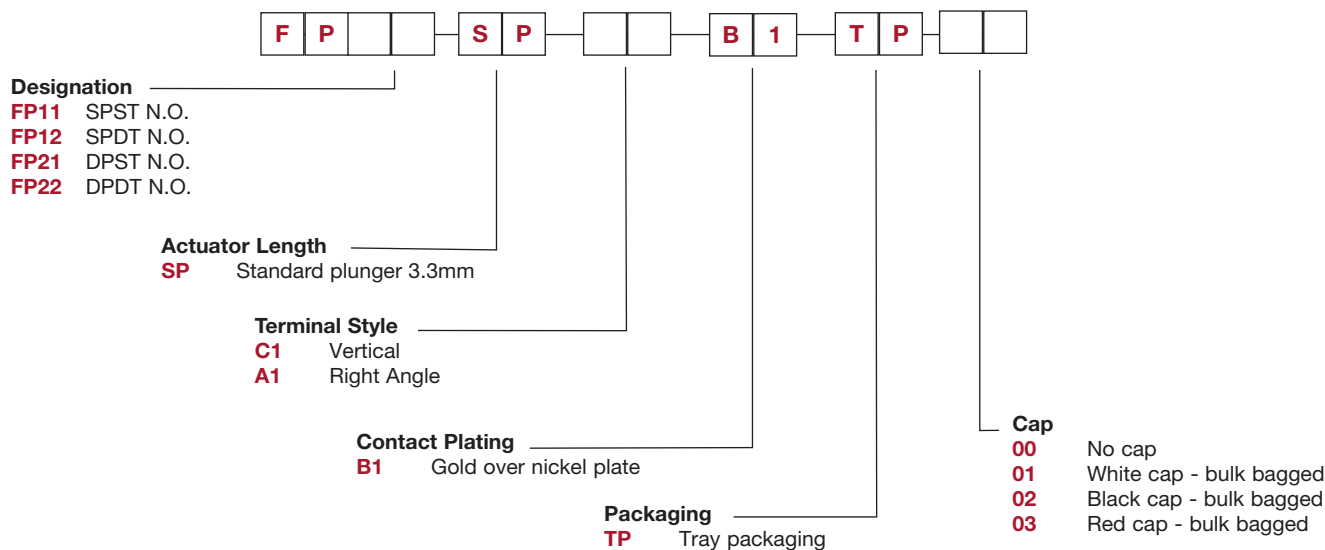
## Materials

MOVABLE CONTACTS:  
 Base metal: Phosphor bronze  
 Plating: Gold over nickel plate  
 FIXED CONTACTS:  
 Base metal: Brass  
 Plating: Gold over nickel plate  
 COVER: PA66 - Black  
 ACTUATOR: PPS - Black  
 BASE: PPS - Black  
 SUPPORT BRACKET: Steel with tin plate  
 (A1 type terminal only)

**NOTE:** Specifications and materials listed above are for switches with standard options.  
 For information on specific and custom switches, consult Customer Service Center.

## Build-A-Switch

To order, simply select desired option from each category and place in the appropriate box. Available options are shown and described on pages A-106 thru A-107. For additional options not shown in catalog, consult Customer Service Center.





# FP Series Sealed Ultra Miniature Pushbutton Switches

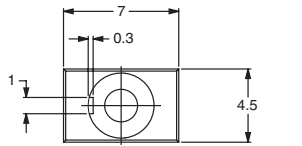
Pushbutton  
A

## SWITCH CIRCUIT

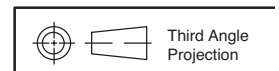
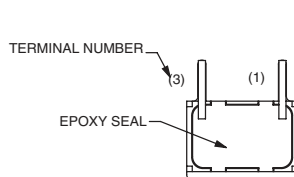
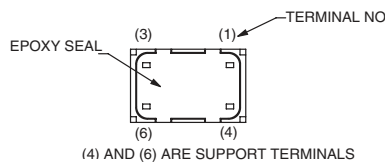
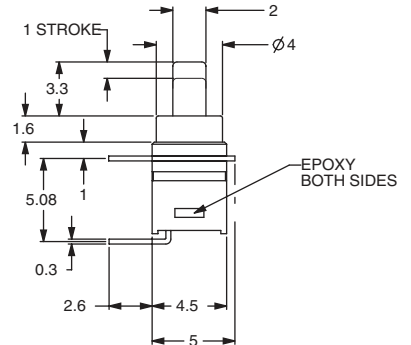
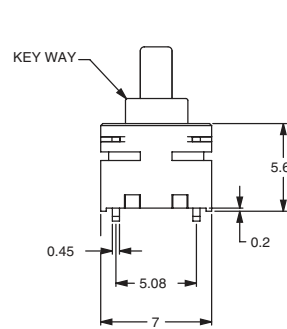
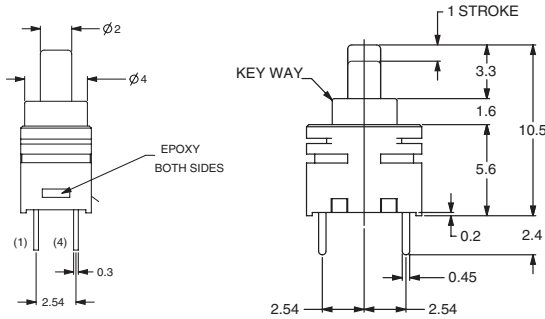
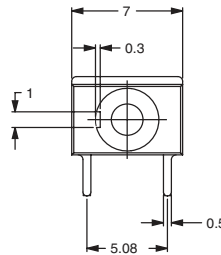
CIRCUIT	MODEL NO.	SWITCH FUNCTION		SCHEMATIC
		POS. 1	POS. 2	
SPST	FP11		MOM	
		CONNECTED TERMINALS		
		OPEN	1-3	
SPDT	FP12	ON	MOM	
		CONNECTED TERMINALS		
		2-3	2-1	
DPST	FP21	OFF	MOM	
		CONNECTED TERMINALS		
		OPEN	1-3,4-6	
DPDT	FP22	ON	MOM	
		CONNECTED TERMINALS		
		2-3,5-6	2-1,5-4	

## TERMINAL STYLE

**C1** VERTICAL



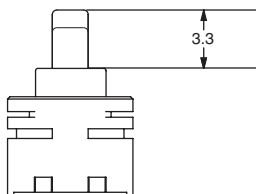
**A1** RIGHT ANGLE



# FP Series Sealed Ultra Miniature Pushbutton Switches

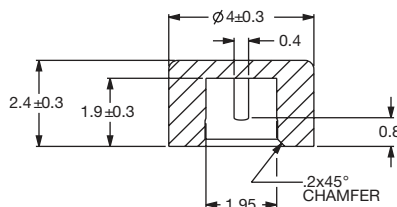
## ACTUATOR LENGTH

**SP** STANDARD PLUNGER 3.3MM



## CAPS

OPTION CODE	DESCRIPTION
<b>00</b>	NO CAP
<b>01</b>	WHITE CAP, BULK BAGGED
<b>02</b>	BLACK CAP, BULK BAGGED
<b>03</b>	RED CAP, BULK BAGGED



To purchase Caps separately without switch, please use these part numbers

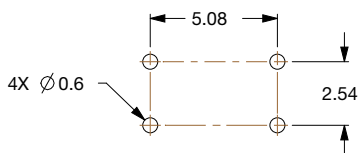
PART #	COLOR
798D01000	WHITE
798D02000	BLACK
798D03000	RED

## MOUNTING HOLE

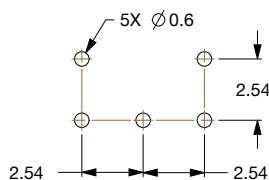
**C1** VERTICAL



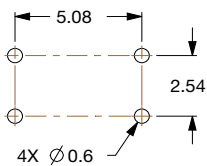
**FP11**



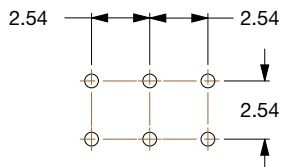
**FP12**



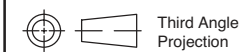
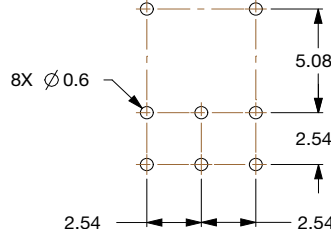
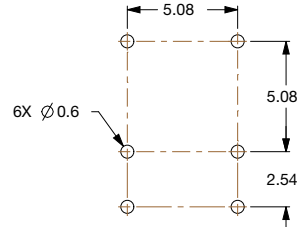
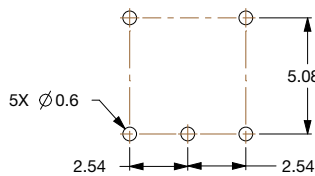
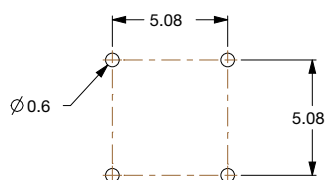
**FP21**



**FP22**



**A1** RIGHT ANGLE



Dimensions are shown: mm  
Specifications and dimensions subject to change