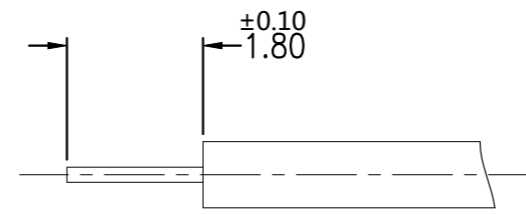
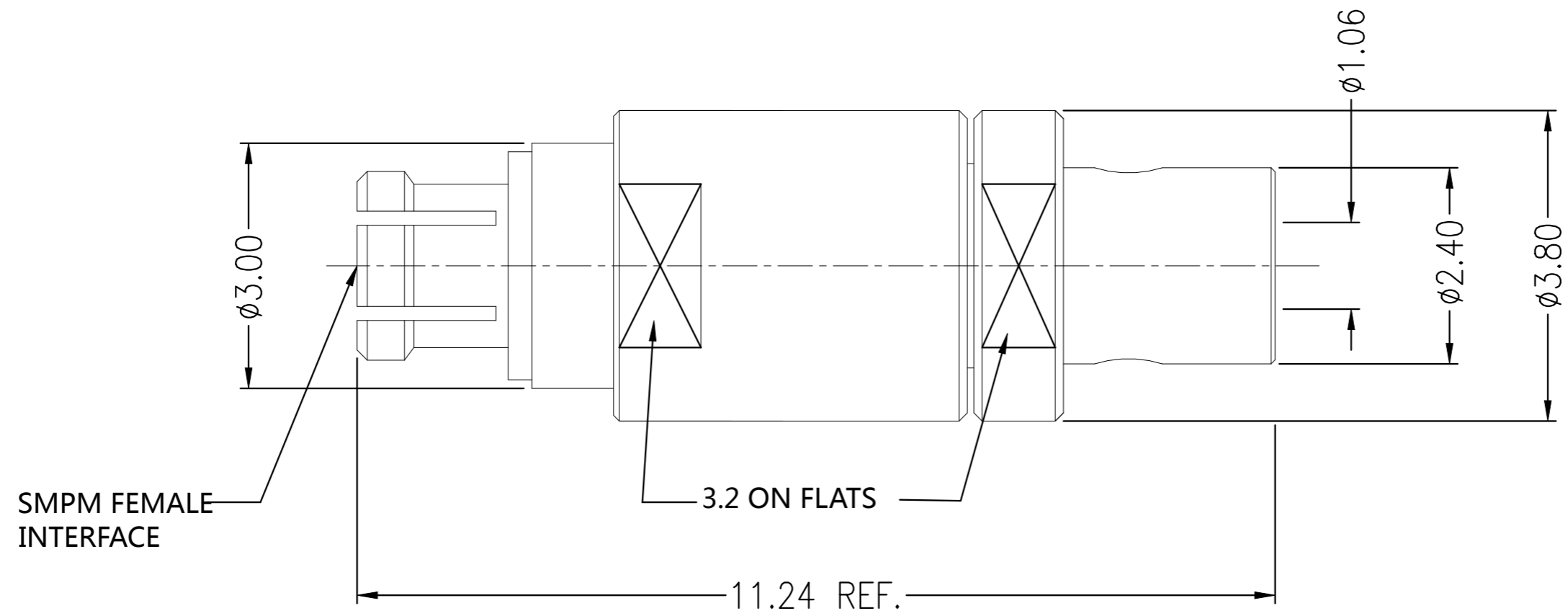


P	LTR	DESCRIPTION	DATE	DWN	APVD
	A	REVISED PER ECN-22-147532	06APR2022	RZ	WK



ELECTRICAL	MECHANICAL	ENVIRONMENTAL
Impedance (Ohm) <u>50</u> Frequency Range (GHz) <u>DC to 40GHz</u> Voltage Rating (Peak) <u>DC to 175 V RMS</u> Insulation Resistance (MIN.) <u>1000 M ohms</u> Contact Resistance (Milliohms MAX) Center Contact <u>6.0</u> Outer Contact <u>2.0</u> Dielectric Withstand Voltage: <u>500 V RMS Max</u> Insertion Loss : <u>0.1*SQRT(F) dB</u> VSWR: <u>1.1 + 0.01*(F) (GHz)</u> RF leakage: <u>N/A</u>	Interface Dimension MIL-STD-348B Fig. <u>328-2</u> Force to Engage (lbs) Full Detent 4.5 Max Smooth Bore 2.5 Max Force to Disengage (lbs) Full Detent 6.5 Max Smooth Bore 1.5 Max Center Contact Captivation Axial (Lbs) <u>1.5</u> Radial (In/Oz) <u>N/A</u> Cable Retention Axial (Lbs) <u>N/A</u> Mating cycles <u>100</u> cycles	TEMPERATURE RANGE <u>-40°C TO + 125°C</u> THERMAL SHOCK <u>MIL-STD-202, METH.107, COND.B</u> CORROSION <u>MIL-STD-202, METH.101, COND.B</u> VIBRATION <u>MIL-STD-202, METH.204, COND.D</u> SHOCK <u>MIL-STD-202, METH.213, COND.I</u> MOISTURE RESISTANCE <u>MIL-STD-202, METH.106,</u> ROHS <u>COMPLIANT</u>

RECOMMENDED CABLE STRIPPING DIM'S

QUANTITY PER ASSY	PARTS LIST
1	Au30u" BeCu BODY 4
1	Au10u" BRASS BODY 3
1	- PEEK INSULATION 2
1	Au50u" BeCu CENTER CONTACT 1
-1	PLATING MATERIAL DESCRIPTION ITEM

THIS DRAWING IS A CONTROLLED DOCUMENT.

DWN	RANDY Z	16FEB2022
CHK	ERIC D	16FEB2022
APVD	WENKE H	16FEB2022
PRODUCT SPEC	NAME	
APPLICATION SPEC	SMPM JACK ST FOR CABLE SR.034	
WEIGHT	SIZE	CAGE CODE
-	A3	00779
CUSTOMER DRAWING	DRAWING NO	RESTRICTED TO
	G-2406839	-
SCALE	1:1	SHEET
		1 OF 1
REV	A	