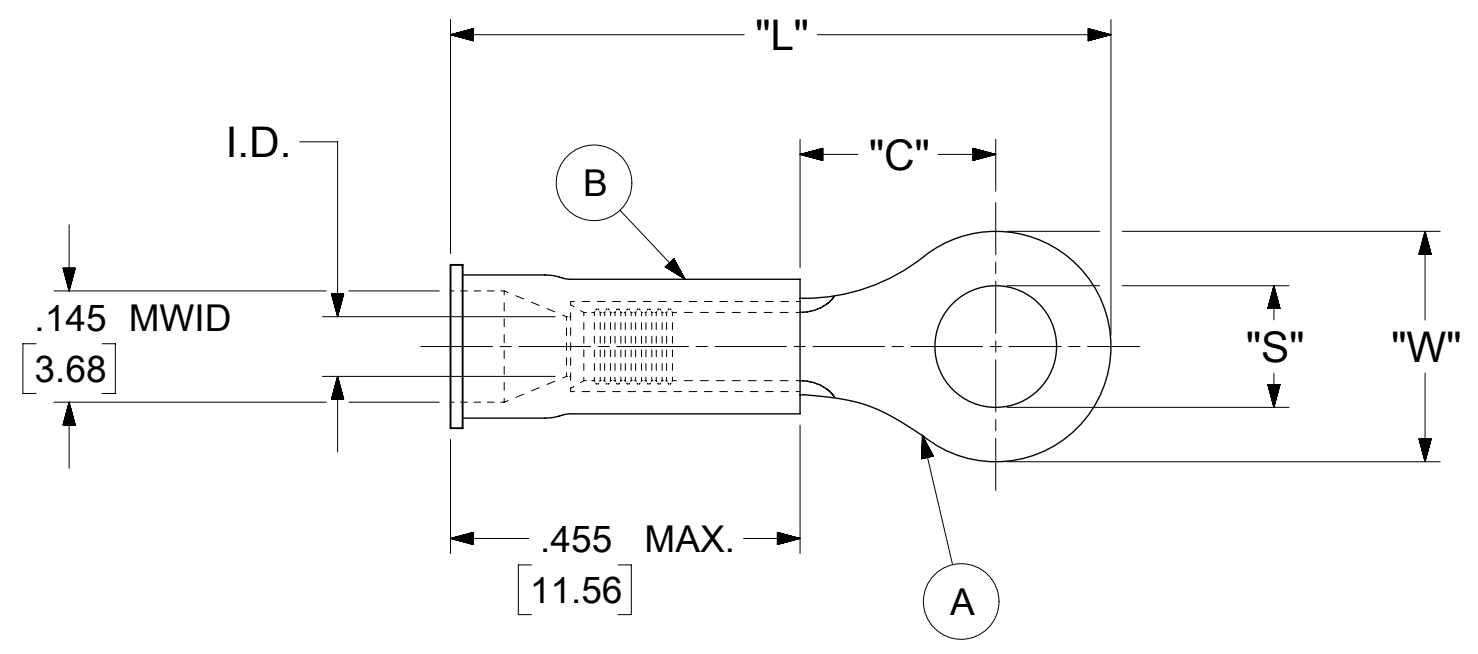


LOOSE PIECE		SPECIFICATIONS						
MATERIAL NUMBER	ENGINEERING NUMBER	STUD SIZE	"S" ±.005 [0.13]	"W" ±.010 [0.25]	"C" MIN.	"L" MAX.	"I.D." MIN.	STOCK ±.001 [0.025] THICKNESS
190540058	A-233-08X	8	.173 [4.39]	.273 [6.93]	.240 [6.10]	.866 [22.00]	.062 [1.57]	.028 [.71]
190540059	A-233-10X	10	.198 [5.03]					



- NOTES:
- MATERIAL:
 - (A). RING TONGUE TERMINAL: COPPER
 - PLATING: ELECTRO-TIN (.0003 MIN.)
 - (B). INSULATION: MOLDED PVC (RED)
 - MWID: MAXIMUM WIRE INSULATION DIAMETER
.25 -1.5MM²
 - WIRE SIZE: 22 -18 AWG
.25 -1.5MM²
 - ALL DIMENSIONS IN INCHES/[MM].
 - PARTS ARE ROHS COMPLIANT.
 - DIMS. SHOWN ARE FOR REFERENCE ONLY.

SYMBOLS	THIS DRAWING CONTAINS INFORMATION THAT IS PROPRIETARY TO MOLEX ELECTRONIC TECHNOLOGIES, LLC AND SHOULD NOT BE USED WITHOUT WRITTEN PERMISSION				
	▽ = 0	INCH/MM	SCALE	CURRENT REV DESC: MIGRATION TO ECTR/NX	
	▽ = 0	GENERAL TOLERANCES (UNLESS SPECIFIED)		EC NO: 622916 DRWN: ABENJAMINLW 2019/08/23 CHK'D: GROJAS01 2019/08/28 APPR: JMACNEIL 2019/09/05	
	▽ = 0	MM	INCH		
▽ = 0	4 PLACES ± --- ± ---	3 PLACES ± --- ± 0.005			
▽ = 0	2 PLACES ± 0.13 ± 0.01	INITIAL REVISION:		DOCUMENT NUMBER 190540056	
▽ = 0	1 PLACE ± 0.25 ± ---	DRWN: KO 1984/10/23	DOC TYPE PSD		
▽ = 0	0 PLACES ± --- ± ---	DRWN: JMACNEIL 2019/07/01	DOC PART 000	REVISION A1	
▽ = 0	ANGULAR TOL ± 0.5 °	THIRD ANGLE PROJECTION	DRAWING	SERIES	MATERIAL NUMBER
▽ = 0	DRAFT WHERE APPLICABLE MUST REMAIN WITHIN DIMENSIONS	THIRD ANGLE PROJECTION	C-SIZE	19054	CUSTOMER
					GENERAL MARKET
					SHEET NUMBER
					1 OF 1