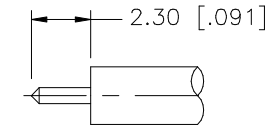
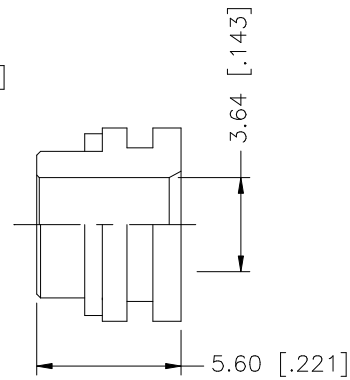
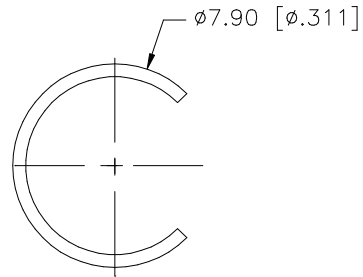
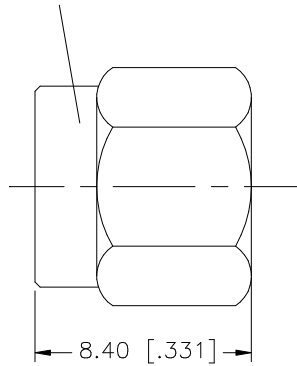


REV.	DATE	DESCRIPTION
NC	05/11/99	INITIAL RELEASE
A	12/18/06	UPDATE DRAWING FORMAT

1/4-36UNS-2B



RECOMMENDED
CABLE STRIPPING DIM'S

8					<small>UNLESS OTHERWISE SPECIFIED DIMENSIONS ARE IN MILLIMETERS. DIMENSIONS IN [] ARE IN INCHES AND FOR CUSTOMER REFERENCE ONLY.</small> <small>UNLESS OTHERWISE SPECIFIED TOLERANCES FOR MILLIMETERS ARE: 0.5 - 8mm ± 0.20mm 8 - 30mm ± 0.40mm 30 - 120mm ± 0.50mm</small> <small>UNLESS OTHERWISE SPECIFIED TOLERANCES FOR INCHES ARE: .020 - .315 = ± 0.007" .315 - 1.180 = ± 0.015" 1.180 - 4.724 = ± 0.020"</small>	APPROVALS	DATE	<h1 style="color: blue; text-align: center;">Amphenol Connex</h1> <p style="text-align: center;">PART DESCRIPTION SMA DIRECT SOLDER PLUG (FOR .141" SEMI-RIGID, SHORT PROFILE CABLE)</p> <p style="text-align: center;">PART NO. 132266</p>						
7				DRAWN		G.R.S.	12/18/06							
6				CHECKED										
5				ISSUED										
4				SHEET	1 OF 1									
3	RETAINER RING	BER. COPPER	NATURAL	1	CAD FILE	C:/132/132266.DWG	DWG. NO.	132266.DWG	REV.	A	SIZE	A	SCALE	NA
2	GASKET	SILICONE	RED	1										
1	BODY	BRASS	NICKEL	1										
	DESCRIPTION	MATERIAL	FINISH	QTY	DO NOT SCALE DRAWING									