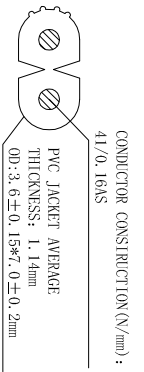
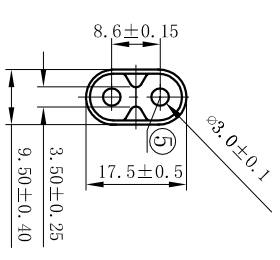
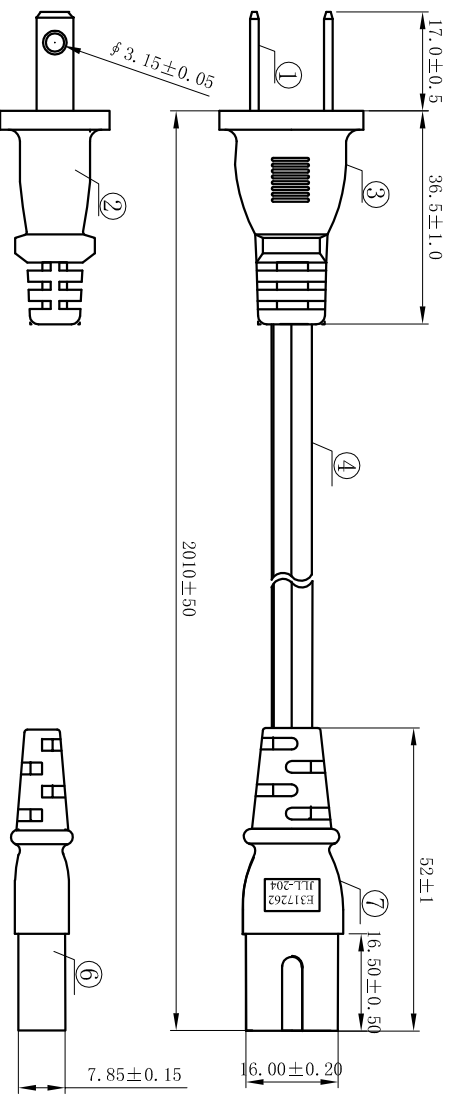
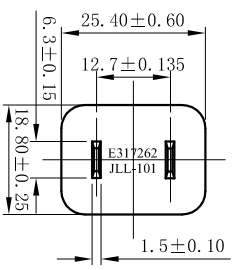


PART NO.	JLL-101 JLL-204 WIRE	SCALE	1 : 1
DESCRIPTION	SPT-2#18*2C 105C	UNIT:	mm
DWG No.	800-18-3-0-SPT2-BL-00200		

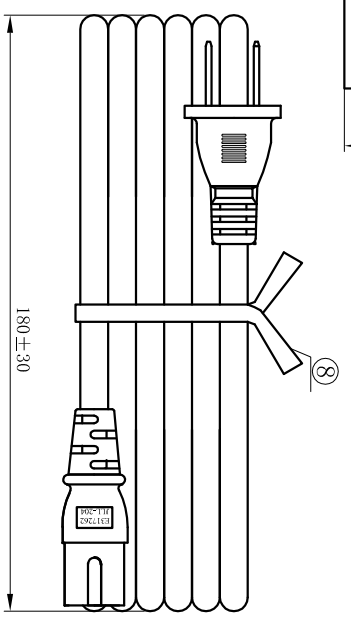


NOTES:

1) JACKET COLOR: BLACK

TESTING:

- 1) 100% OPEN & SHORT TESTING
- 2) INSULATION RESISTANCE: 100M ohm (min)
- 3) VOLTAGE: DC500V/1min
- 4) ROHS COMPLIANT



Printing the contents of wire The use of printing ink replenish wire

2248711 (UL) SPT-2 2 X 18AWG(0.824mm²) VW-1 105°C 300V CSA 228191 SPT-2
2 X 18AWG(0.824mm²) FT2 105°C 300V JINLANJI -LF-

REV	DATE	DESCRIPTION	SYMBOL
DRAWN/DATE	CHECKED/DATE	GONG/11.05.13	

NO.	SPECIFICATION	COLOR	MATERIAL	AMOUNT
①	Non-polar terminal 98661	Silver	Cu	2P
②	Model aircraft 8661AN-2P	WHITE	PBT	1PCS
③	Plug JLL-101	BLACK	PVC Cu	1PCS
④	Wire SPT-2 18AWG/2C 105°C	BLACK	PVC Cu	1PCS
⑤	terminal 98715	Silver	Cu	3P
⑥	Model aircraft 8714P	WHITE	PBT	1PCS
⑦	Couplers JLL-204	BLACK	PVC Cu	1PCS
⑧	Ties	BLACK		1PCS