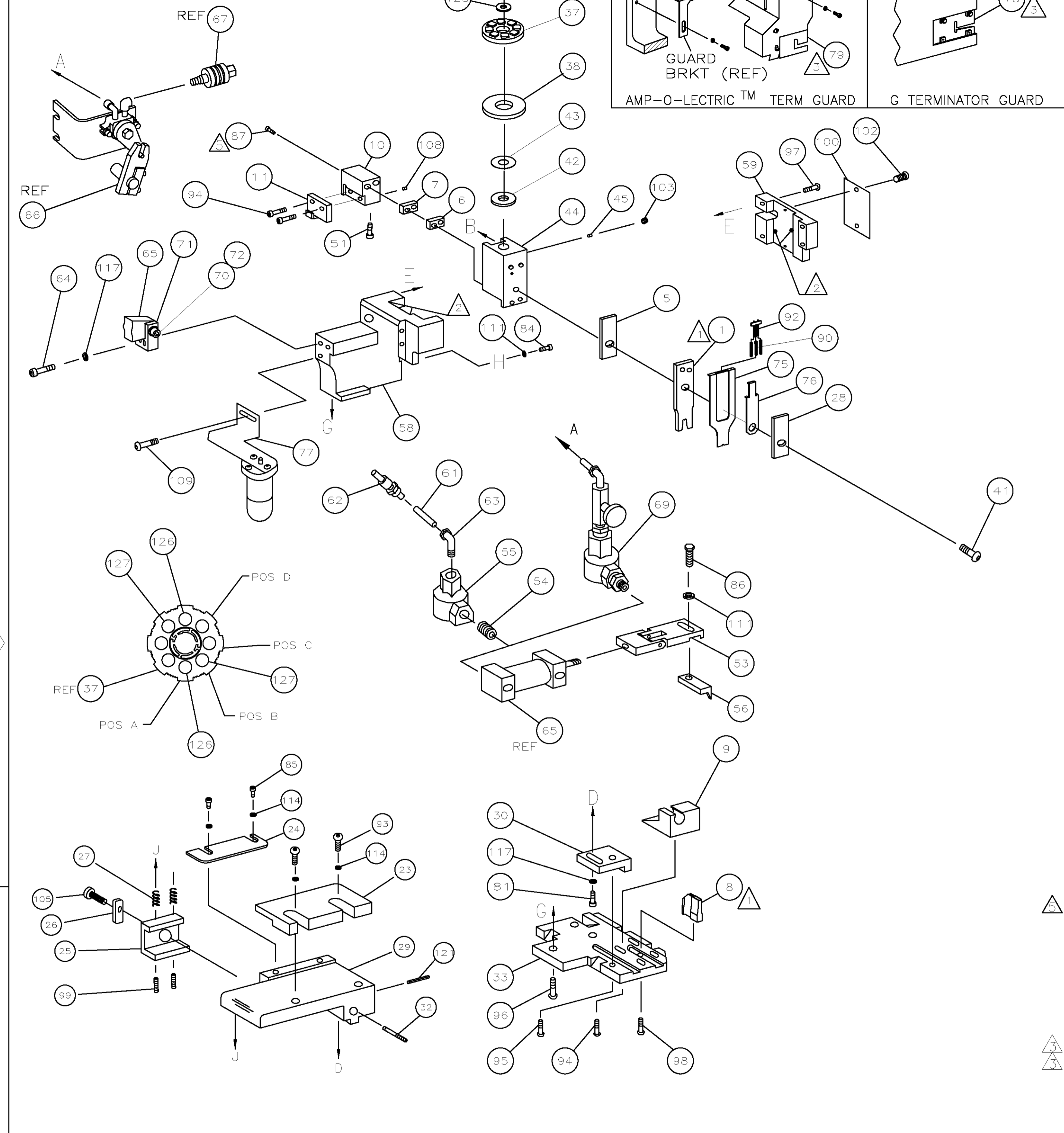


PART NUMBER	REV	FIRST USED
1852070-1	C	122500-1
1852070-2	C	565435-5
1852070-3	C	354500-1

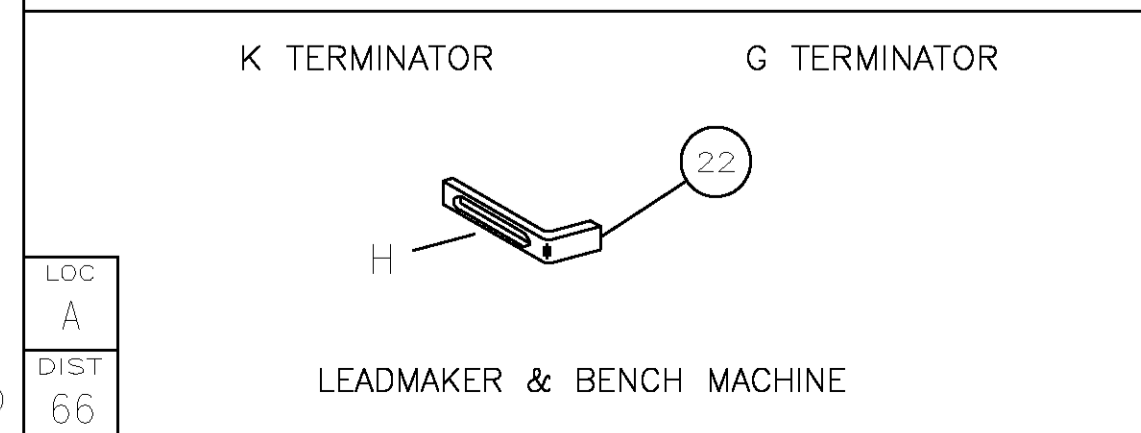


- 1 RECOMMENDED SPARE PARTS.
- 2 GREASE LIGHTLY.
- 3 GUARD MUST BE IN PLACE WHEN OPERATING APPLICATOR IN A BENCH MACHINE.
- 4 SEE DRAWING FOR COMPONENTS.
- 5 CUT TO LENGTH AT ASSY.
- 6 9600 MAX CMA RECOMMENDED.

TERMINAL NAME: TERMINAL, MALE, 56 SERIES					
AMP TERM PN	MFR TERM PN	PACKARD TERMINAL	PACKARD CRIMP SPECS		
1572732	12015878	PAD LTR	CRIMP HEIGHT	WIRE SIZE	
		A	3.2 ±0.05 [.126 ±.002IN]	5mm ² OR 10	
		B	3 ±0.05 [.118 ±.002IN]	3mm ² OR 12	
		C	NOT	USED	
		D	NOT	USED	
		CRIMP	SIZE	TYPE	RANGE
		WIRE	4.19mm [.165]	F	3-5mm ² 12-10
		INSUL	-	-	-
WIRE STRIP LENGTH	TERM APPL SPEC	FEED	APPL INSTRUCTION	SET UP GAGE	LAYOUT
9.78-10.57	NONE	15.88	408-8040	458637-1	L4025

QTY	RECD	PER	ASSY	PARTS LIST	DESCRIPTION	ITEM NO		
						129		
						128		
2	2	2	-	C	5-354778-9	PIN, WIRE DISC (.2790)B	127	
2	2	2	-	C	4-354778-1	PIN, WIRE DISC (.2700)A	126	
1	1	1	-	A	986950-1	WASHER, FLAT PRECISION	125	
1	1	1	-	A	217238-1	GENERAL INSTRUCTION PACKAGE	124	
1	1	1	-	-	4088040	SF APPL INST 408-8040	123	
						122		
1	1	1	-	A	3-21028-8	PIN,SLT SPR(Ø.093x.62)ST GDE PL	121	
						120		
						119		
						118		
3	3	3	-	A	21024-5	WASHER, LOCK(#10)ADJ BLOCK	117	
						116		
						115		
4	4	4	-	A	21024-2	WASHER,LOCK(#4)FRONT STP GUIDE	114	
						113		
						112		
2	2	2	-	A	21024-4	WASHER,LOCK(#8)STRIPPER	111	
						110		
-	1	-	-	A	2-21002-6	SCR,BHC(10-32x.38)LUBE ASSY	109	
1	1	1	-	A	2-21006-1	SCR, SKT SET(4-40x.25)	108	
						107		
						106		
1	1	1	-	A	22353-8	SCR,SHLD(Ø.187x.25)DRAG LEVER	105	
						104		
1	1	1	-	A	21009-2	SCR,SKT SET(1/4-20x.25 LW)RAM	103	
2	2	2	-	A	21017-2	SCR,DRIVE(#2x.19)ID PLATE	102	
						101		
1	1	1	-	B	461264-1	PLATE, IDENTIFICATION	100	
2	2	2	-	A	5-21006-6	SCR,SKT SET (10-32x.75)DRAG	99	
1	1	1	-	A	22733-8	SCR,BHC(8-32x.38 LW)ANVIL	98	
4	4	4	-	A	2-21002-9	SCR,BHC(10-32x.75) CAP	97	
3	3	3	-	A	2-22733-8	SCR,BHC(1/4-20x.62)HOUSING	96	
1	1	1	-	A	2-21002-7	SCR,BHC(10-32x.50)SG ADJ BLK	95	
4	4	4	-	A	2-21002-2	SCR,BHC(8-32x.50)TERM H DWN	94	
2	2	2	-	A	1-21000-5	SCR,SHC(4-40x.50)F ST GUIDE	93	
1	1	1	-	A3	1424350-1	HOLDER, PIN, WIRED	92	
						91		
3	3	3	-	A	2-23147-2	SPRING, DEPRESSOR	90	
						89		
						88		
2	2	2	-	A	3-21000-2	SCR,SHC(8-32x1.25)DEP-HOLD	87	
1	1	1	-	A	2-22603-0	SCR,HEX HD(8-32x.31)FEED FINGER	86	
2	2	2	-	A	1-21000-3	SCR,SHC(4-40x.25)R ST GUIDE	85	
1	1	1	-	A	2-21000-7	SCR,SHC(8-32x.50)STRIPPER	84	
						83		
						82		
1	1	1	-	A	3-21000-4	SCR,SHC(10-32x.38)SG ADJ BL	81	
						80		
-	REF	-	-	B	455749-1	GUARD, WINDOW	79	
REF	-	-	-	B	679532-1	INSERT, GUARD	78	
-	1	-	-	C	1-465184-0	LUBRICATOR ASSY	77	
1	1	1	-	A3	1490525-2	SPACER, DEPRESSOR	76	
1	1	1	-	A2	1490524-2	DEPRESSOR, WIRE	75	
						74		
						73		
1	1	1	-	A	3-21001-5	SCR,SHC(3/8-16x1.00)AIR FEED	72	
1	1	1	-	B	459610-1	MOUNT, FEED BRACKET	71	
QTY	RECD	PER	ASSY	U/M	DWG SIZE	PART NO	DESCRIPTION	ITEM NO

QTY	RECD	PER	ASSY	U/M	DWG SIZE	PART NO	DESCRIPTION	ITEM NO
-	1	1	1	-	C	1725849-2	BLADE, SLUG	11
1	1	1	-	B	1583893-3	HOLDER, SLUG BLADE	10	
1	1	1	-	C	1213905-1	SHEAR, LOWER	9	
1	1	1	-	C	1633330-3	ANVIL	8	
1	1	1	-	C	5-240641-2	SPACER, DEPRESSOR (REAR)	7	
1	1	1	-	C	5-240641-2	SPACER, DEPRESSOR (REAR)	6	
1	1	1	-	C	455888-1	SPACER, CRIMPER	5	
							4	
							3	
							2	
1	1	1	-	C	1633305-4	CRIMPER, WIRE	1	
QTY	RECD	PER	ASSY	U/M	DWG SIZE	PART NO	DESCRIPTION	ITEM NO



THIS DRAWING IS A CONTROLLED DOCUMENT.

THIS DRAWING IS UNPUBLISHED. RELEASE FOR PUBLICATION BY AMP INCORPORATED. ALL RIGHTS RESERVED. COPYRIGHT 20

1852070

DIMENSIONS IN INCHES. DO NOT SCALE PRINT. TOLERANCES UNLESS OTHERWISE SPECIFIED:

DR	14JUN05	APP	14JUN05
C.ERISMAN	T.ELBIN		
CHK	14JUN05	REL	-
C.ERISMAN			

NAME: SIDE FEED HDM APPLICATOR MACHINE REF: MINI APPL

SCALE: 1 OF 1 REV: C

REVISION RECORD: C ECR-10-000077 RS JAN11; B ECR-05-008792 CE AUG05; A REVD CE AUG05

REMOVE BURRS, BREAK SHARP EDGES R.015 MAX

CAGE CODE: 00779 CUSTOMER AND ASSEMBLY DRAWING