

MBT. | Diamond cut knurled knobs

Technopolymer

INCH



PP



1

MATERIAL

High-resilience polypropylene based (PP) technopolymer, black colour, matte finish.



2

COLOURED CENTRE CAP

Technopolymer, matte finish.

To order, add the index of the desired colour (C9, ..., C17) to the code and the description.



3

On request and for sufficient quantities, it can be supplied in other colours or with customised graphic symbols, marks or writings.



4

STANDARD EXECUTIONS

- **MBT-B**: brass boss, threaded blind hole or plain blind hole complete with socket set screw for fitting to shaft.

- **MBT-p**: zinc-plated steel threaded stud, chamfered flat end according to ISO 4753 (see Technical Data on page A-11).



5



6

ERGONOMY AND DESIGN

The particular knurling on the outside rim of the knob, provided with a structure of very fine pitch, allows a safe and comfortable grip, offering the operator the possibility of operating under the most different working conditions in a sensitive and ergonomic way and simplifying the adjustment of the knob during rapid rotation (or screwing) without any unpleasant angular work for the hand and wrist.



7



8



9



10



11



12



13



14



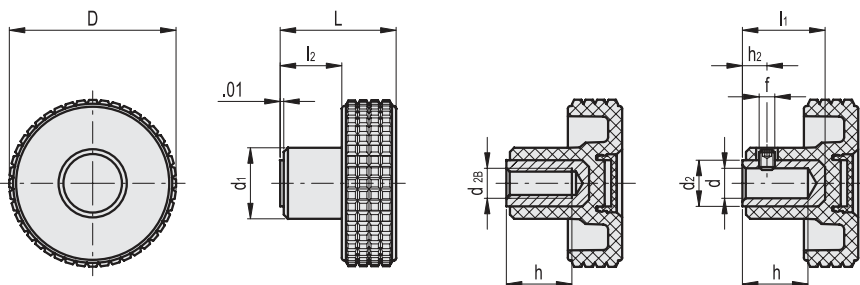
15



RH



ELESA Original design



* Complete with colour index, example: 934206-C2 MBT.30 B-1/4-20-C2

C9 RAL9005

C2 RAL2004

C3 RAL7035

C4 RAL1021

C5 RAL5024

C6 RAL3000

C17 RAL6017

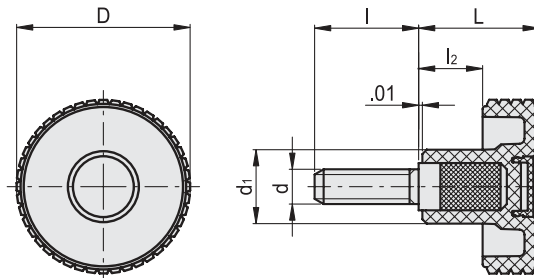
INCH

MBT-B

Code	Description	D	d	d28	L	d1	d2	l1	l2	h	h2	f	
934206*	MBT.30 B-1/4-20*	1.22	-	1/4-20	0.94	0.59	-	-	0.45	0.47	-	-	0.04
934316*	MBT.40 B-1/4-*	1.57	0.250	-	1.04	0.67	0.47	0.67	0.49	0.55	0.2	10-32	0.06
934321*	MBT.40 B-1/4-20*	1.57	-	1/4-20	1.04	0.67	-	-	0.49	0.47	-	-	0.05
934326*	MBT.40 B-5/16-18*	1.57	-	5/16-18	1.04	0.67	-	-	0.49	0.51	-	-	0.05
934416*	MBT.50 B-3/8-*	1.97	0.375	-	1.3	0.79	0.59	0.98	0.63	0.79	0.24	10-32	0.1
934421*	MBT.50 B-5/16-18*	1.97	-	5/16-18	1.3	0.79	-	-	0.63	0.79	-	-	0.07
934426*	MBT.50 B-3/8-16*	1.97	-	3/8-16	1.3	0.79	-	-	0.63	0.71	-	-	0.07
934506*	MBT.60 B-3/8-*	2.36	0.375	-	1.54	0.91	0.63	1.18	0.73	0.98	0.31	1/4-20	0.15
934511*	MBT.60 B-3/8-16*	2.36	-	3/8-16	1.54	0.91	-	-	0.73	0.79	-	-	0.11
934516*	MBT.60 B-1/2-13*	2.36	-	1/2-13	1.54	0.91	-	-	0.73	0.79	-	-	0.13

Clamping knobs

84



* Complete with colour index, example: 934261-C2 MBT.30 p-1/4-20x1/2-C2

C9 RAL9005
 C2 RAL2004
 C3 RAL7035
 C4 RAL1021
 C5 RAL5024
 C6 RAL3000
 C17 RAL6017

MBT-p

INCH

Code	Description	D	d2A	L	d1	l	l2	⚖
934261-*	MBT.30 p-1/4-20x1/2-*	1.22	1/4-20	0.94	0.59	0.500	0.45	0.03
934266-*	MBT.30 p-1/4-20x3/4-*	1.22	1/4-20	0.94	0.59	0.750	0.45	0.04
934346-*	MBT.40 p-1/4-20x3/4-*	1.56	1/4-20	1.04	0.67	0.750	0.49	0.04
934361-*	MBT.40 p-1/4-20x1-*	1.56	1/4-20	1.04	0.67	1.000	0.49	0.05
934381-*	MBT.40 p-5/16-18x3/4-*	1.56	5/16-18	1.04	0.67	0.750	0.49	0.06
934391-*	MBT.40 p-5/16-18x1-*	1.56	5/16-18	1.04	0.67	1.000	0.49	0.06
934441-*	MBT.50 p-5/16-18x3/4-*	1.97	5/16-18	1.3	0.79	0.750	0.63	0.08
934446-*	MBT.50 p-5/16-18x1-*	1.97	5/16-18	1.3	0.79	1.000	0.63	0.09
934451-*	MBT.50 p-3/8-16x1-*	1.97	3/8-16	1.3	0.79	1.000	0.63	0.09
934456-*	MBT.50 p-3/8-16x1¼-*	1.97	3/8-16	1.3	0.79	1.250	0.63	0.1
934521-*	MBT.60 p-3/8-16x1-*	2.4	3/8-16	1.54	0.91	1.000	0.73	0.13
934526-*	MBT.60 p-3/8-16x1¼-*	2.4	3/8-16	1.54	0.91	1.250	0.73	0.14

