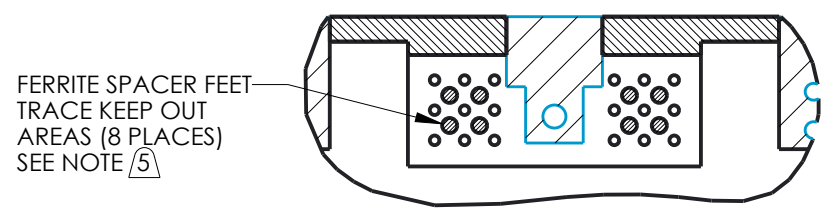
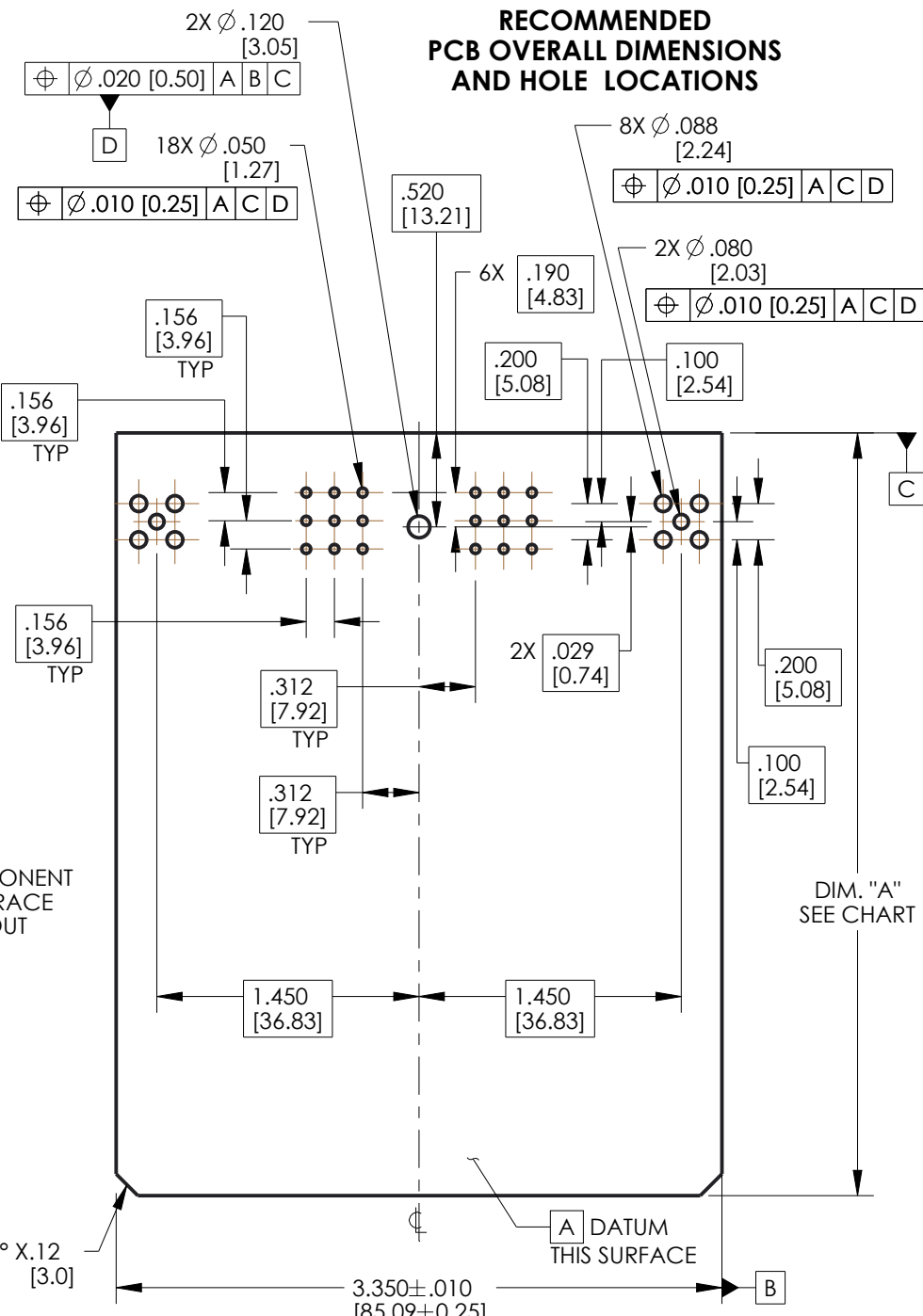
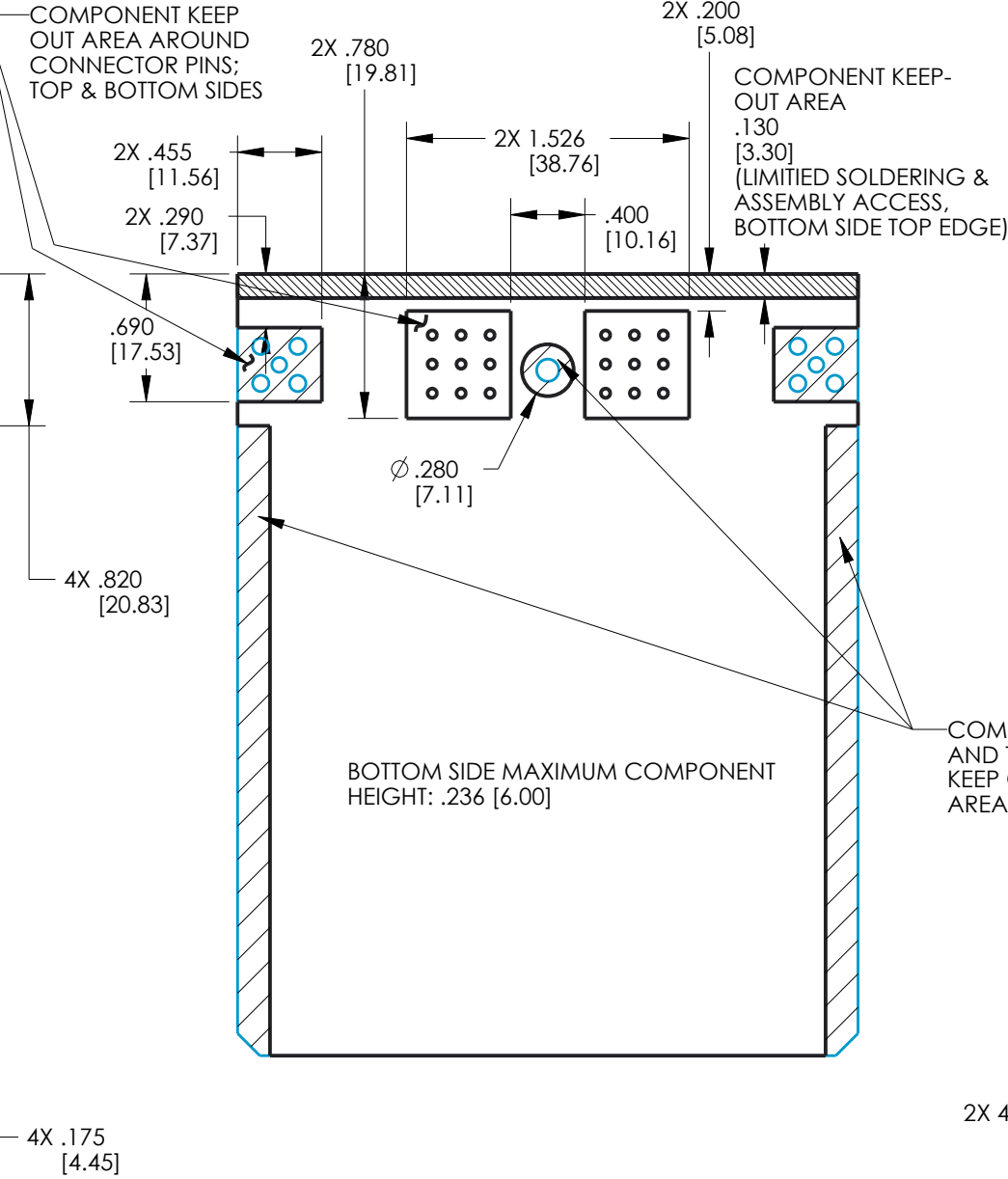
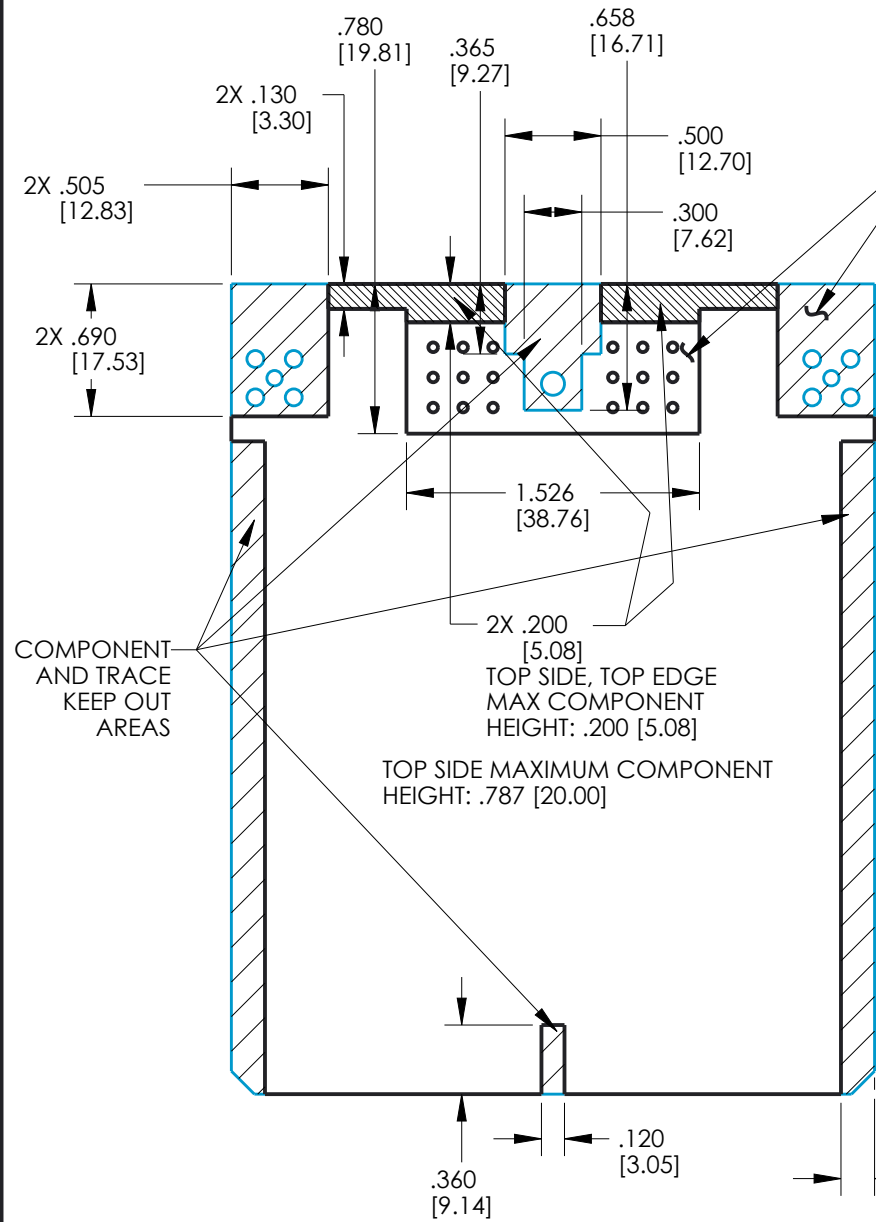


**RECOMMENDED
TOP SIDE
PCB GENERAL
ZONING AND KEEP-OUT AREAS**

**RECOMMENDED
BOTTOM SIDE
PCB GENERAL
ZONING AND KEEP-OUT AREAS**

**RECOMMENDED
PCB OVERALL DIMENSIONS
AND HOLE LOCATIONS**



PCB TOP SIDE PIN AREA WITH FERRITES DETAIL

RECOMMENDED PCB LENGTH

DIM. "A" (SEE DRAWING)	USE WITH ENCLOSURE	
	PART NUMBER	DESCRIPTION
4.220 ± 0.015 [107.19 ± 0.38]	581 01 30 065	ME
	581 01 30 075	ME WITH BREATHER
2.520 ± 0.015 [64.01 ± 0.38]	581 01 30 090	MINI ME
	581 01 30 095	MINI ME WITH BREATHER

UNITS ENGLISH INCHES	CINCH		1700 FINLEY RD LOMBARD, IL. 60148
DO NOT SCALE DRAWING	TITLE MODICE ME-RF 18-WAY / SMA HEADER ASSEMBLY		
PRO/E DRAWING			
CONFIDENTIAL THIS DOCUMENT IS THE PROPERTY OF CINCH. NEITHER THIS DOCUMENT NOR ANY OF THE INFORMATION CONTAINED IN IT MAY BE DUPLICATED OR DISCLOSED WITHOUT PRIOR WRITTEN CONSENT OF CINCH. ©COPYRIGHT 2009 CINCH	CAD FILE NUMBER 5810618001S	DRAWING NUMBER 5810618001S	REV E
	CAGE IDENT NO. 71785	SIZE B	SCALE 1:1
		SHEET 2 OF 2	