

# Table of contents

## 目录

<b>Electrical Performance / 电器性能</b> -----	<b>P3-P5</b>
<b>Product Outline / 产品外观尺寸</b> -----	<b>P6</b>
<b>Dc Cord / DC 线材</b> -----	<b>P7</b>
<b>Ac Cord / AC 线材</b> -----	<b>P8</b>
<b>Rating Label / 铭牌</b> -----	<b>P9</b>

## ELECTRICAL PERFORMANCE / 电器性能

### 1. SAFETY STANDARD / 安规标准

1.1 The green mode power supply shall be certified by the following international regulatory standards: 电源应符合下列的国际标准:

Type	Country	Standard	Type	Country	Standard
<input checked="" type="checkbox"/> UL/CUL	USA	UL 60950-1	<input type="checkbox"/> PSB	Singapore	
<input type="checkbox"/> TUV/ GS	Europe	EN 60950	<input checked="" type="checkbox"/> PSE	Japan	<b>J60950 (H29)</b>
<input checked="" type="checkbox"/> CCC	China	<b>GB4943-2011</b>	<input type="checkbox"/> NOM	Mexico	
<input checked="" type="checkbox"/> CE	Europe	CE MARK	<input type="checkbox"/> GOST	Russia	

### 2. INPUT FEATURE / 输入特性

2.1 INPUT VOLTAGE RANGE: **90Vac to 264Vac**. 输入电压范围可以从 **90Vac** 到 **264Vac**.

2.2 RATED INPUT VOLTAGE: **100Vac to 240Vac**. 额定输入电压从 **100Vac** 到 **240Vac**.

2.3 INPUT FREQUENCY RANGE: **47Hz to 63Hz**. 输入频率范围从 **47Hz** 到 **63Hz**.

2.4 INPUT CURRENT: **1.3A** max.&100-240Vac. 最大输入电流不超过 **1.3A** (输入条件 100-240Vac) .

2.5 INRUSH CURRENT: **60A** max. at 100-240Vac input for a cold start at 25°C. 在准开机条件下, 最大浪涌电流不超过 **60A** (输入条件 100-240Vac).

2.6 EFFICIENCY: higher than **80%** at 100-240Vac input and output full load. 效率高于 **80%** (输入 100-240Vac 和输出满载条件) .

### 3. OUTPUT FEATURE / 输出特性

RATED OUTPUT / 额定输出	SPEC. LIMIT / 规格限定		REMARK / 备注
	Min. value	Max. value	
Output regulation / 输出电压规格	<b>4.75VDC</b>	<b>5.25VDC</b>	<b>±5%</b>
Output load / 输出负载规格	<b>0.0A</b>	<b>4.0A</b>	
Ripple and Noise / 输出纹波及噪声	—	<b>250mVp-p</b>	<b>20MHz Bandwidth 10uF Ele. Cap.&amp; 0.1uF Cer. Cap</b>
Output Overshoot / 输出过冲幅度	—	10%	
Line regulation / 电压调整率	—	+/-1%	
Load regulation / 负载调整率	—	+/-5%	
Turn-on delay time / 开机延迟时间	—	3000mS	
Hold up time / 关机维持时间	10mS	—	Input voltage:115Vac
	20mS	—	Input voltage:230Vac

### 4. IELECTRIC WITHSTANDING STRENGTH(HI-POT) / 绝缘介电强度 (耐压)

Primary to Secondary **AC3000V**, **10mA**, 1 minute for type test, 3 second for production. 一次侧对二次侧: **AC3000V**, **10mA** 标准测试 1 分钟, 量产测试 3 秒钟.

**EDITION**  
版本

**A0**

**PAGE**  
页码

**3/9**

## ELECTRICAL PERFORMANCE / 电器性能

### 5 PROTECTION FEATURE / 保护特性

#### 5.1 OVER—CURRENT PROTECTION / 过电流保护：

The green mode power supply shall be hiccupped when any output operating in overload condition (set @ Max load **120~200%**) under any line condition for an indefinite period of time. The power supply shall be self—recovery when the fault condition is removed. 在任何时候任何输入条件，当输出操作在过载条件最大电源的 (**120~200%**) 时，电源供应器将进入打嗝模式，当故障被移走后，电源要能自动恢复到正常。

#### 5.2 SHORT—CIRCUIT PROTECTION / 输出短路保护：

The power supply shall be hiccupped and no damage shall occur when any output operating in a short circuit condition under any line condition for an indefinite period of time. The power supply shall be self—recovery when the fault condition is removed. 在任何时候，任何输入条件下，当输出操作在短路情况下，电源供应器将进入打嗝模式，当故障消失后，电源要能自动恢复正常。

### 6 ENVIRONMENTAL CONDITIONS / 环境条件

#### 6.1 OPERATING / 操作条件：

The power supply shall be capable of operating continuously in any mode without performance deterioration in the following environmental conditions. 在下列环境条件下，电源供应器要能够连续操作在各种模式，且不能造成性能的退化。

6.1.1 Ambient Temperature: 0°C~40°C 环境温度：0°C~40°C

6.1.2 Relative Humidity: 10%~90% 相对湿度：10%~90%

6.1.3 Vibration: 1.0mm, 10—25Hz, 15 minutes per cycle for each axis (X, Y, Z)

6.1.4 Cooling: The power supply will operate with convection cooling. Blocking of vents must not cause damage to the power supply. 电源供应器将操作在对流冷却的环境下，即使将通风口阻塞电源也不允许有任何损伤发生。

#### 6.2 NON—OPERATING / 非操作条件：

The power supply shall be capable of withstanding the following environmental conditions extended periods of time, without sustaining electrical or mechanical damage and subsequent operational deficiencies: 电源供应器要能够长期的经受下列的环境条件，且不允许有电气级机械方面的损伤和并发的操作的缺失。

6.2.1 Ambient Temperature: -30°C~70°C 环境温度：-30°C~70°C

6.2.2 Relative Humidity: 10%~90% 相对湿度：10%~90%

6.2.3 Color of case and cable / 外壳及线材颜色：**Black / 黑色**

6.2.4 Vibration and Shock / 振动和冲击

The power supply shall be designed to withstand normal transportation vibration per MIL—STD—810D, method 514 and procedures X, as it is mounted in the chassis assembly and packed for shipping. 电源供应器装配及出货的包装设计，均要能承受正常运输的振动，并符合 MIL—STD—810D 方法 514 和程序 X。

EDITION  
版本

A0

PAGE  
页码

4/9

## ELECTRICAL PERFORMANCE / 电器性能

### 6.2.5 Dropping Packed / 跌落试验:

X-Y-Z direction 90cm,one time with each direction / X-Y-Z 三个方向高度 0.9m 每个方向各一次。

## 7 EMC STANDARDS / 电磁兼容性标准

### 7.1 EMI STANDARDS / EMI 标准

The power supply met the radiated and conducted emission requirements requirements for FCC CLASS B,EN55032 CLASS B.本电源供应器符合辐射及传导要求，满足 FCC CLASS B,EN55032 CLASS B。

### 7.2 EMS STANDARDS / EMS 标准

The power supply shall meet the following EMS standards: 本电源供应器满足下列 EMS 标准

7.2.1 EN61000-4-2: 1995 / A1: 1998 Electrostatic Discharge(ESD)

7.2.2 EN61000-4-3: 1996 / A1: 1998 Radiated Electromagnetic Fields(RS)

7.2.3 EN61000-4-4: 1995 Electrical Fast Transient / Burst(EFT)

7.2.4 EN61000-4-5: 1995 Lighting Surge Attachment. Line to Neutral: 2KV (240Vac / Full load)

## 8 RELIABILITY AND QUALITY CONTROL / 可靠性及品质控制

8.1 BURN - IN / 老化 The power supply shall under go a minimum of 4 hours Burn - In test under full load at 40°C~±5°C.电源应在 40°C~±5°C和满载条件下老化 4 小时。

8.2 COMPONENT DERATING / 元件温度要求 Semiconductor junction temperataures shall not exceed the manufacturer's maximun thermal rating.半导体结温不允许超过其制造商要求的最大温度值。

9 WEIGHT / 重量 The weight of the power supply shall be about 150 g.. 电源的重量大约为 150 g.

10 MECHANICAL REQUIREMENT / 结构参数 The power supply size:L96.6\*W44.6\*H30.5mm. 外壳尺寸：L96.6\*W44.6\*H30.5mm

11 INSULATION RESISTANCE / 绝缘阻抗 Input to output: 10M OHM(500VDC)输入对输出 10 兆欧姆 (500VDC)

12 LEAKAGE CURRENT / 漏电流 The leakage current shall be less than 0.25mA for class II when power supply is operated maximum input voltage and maximum load. 当电源供应器操作在最大输入及最大负载情况下，其漏电流应小于 0.25mA，满足 class II 等级。

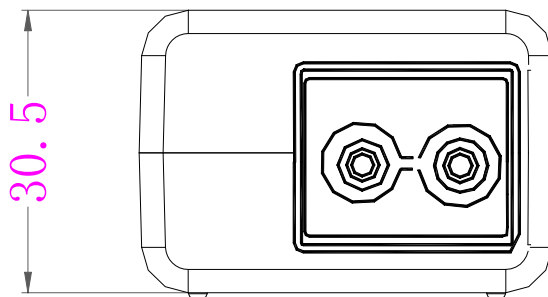
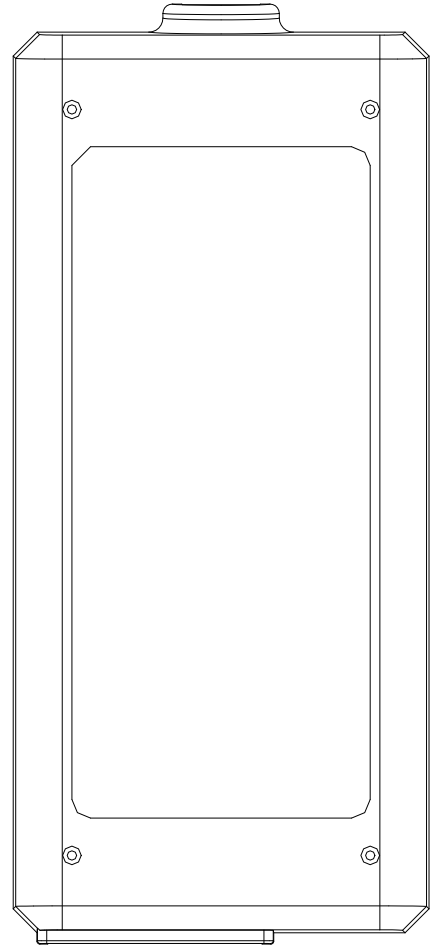
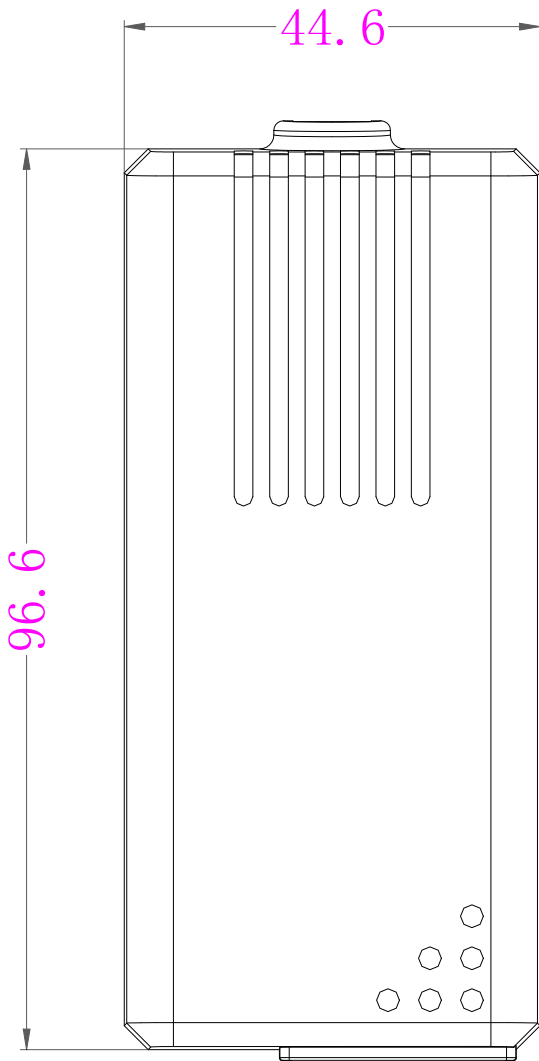
## 13 MAJOR MEASURE EQUIPMENT / 主要测量设备

- |  |                            |
|--|----------------------------|
| A. AC SOURCE / 交流输入电源: AFC-500W                  | <input type="checkbox"/> ✓ |
| B. POWER METER / 电源功率计: CHROMA 2100              | <input type="checkbox"/> ✓ |
| C. ELECTRONIC LOAD / 电子负载: PRODIGIT 3310C        | <input type="checkbox"/> ✓ |
| D. OSCILLOSCOPE / 存储示波器: TDS-2012B               | <input type="checkbox"/> ✓ |
| E. DIGITAL MULTIMETER / 数字式万用表: Fluke 4.5        | <input type="checkbox"/> ✓ |
| F. DC POWER / 直流输入电源: WYK-6030                   | <input type="checkbox"/> ✓ |
| G. HI-POT TESTER / 耐压测试仪: LANKE ELECTRONICS 7112 | <input type="checkbox"/> ✓ |
| H. INSULATION RASISTANCE TESTER / 绝缘电阻表: YD2681A | <input type="checkbox"/> ✓ |

# PRODUCT OUTLINE DIMENSION / 产品外观尺寸

Unit / 单位:mm

Tolerance / 公差:±1.0



EDITION  
版本

A0

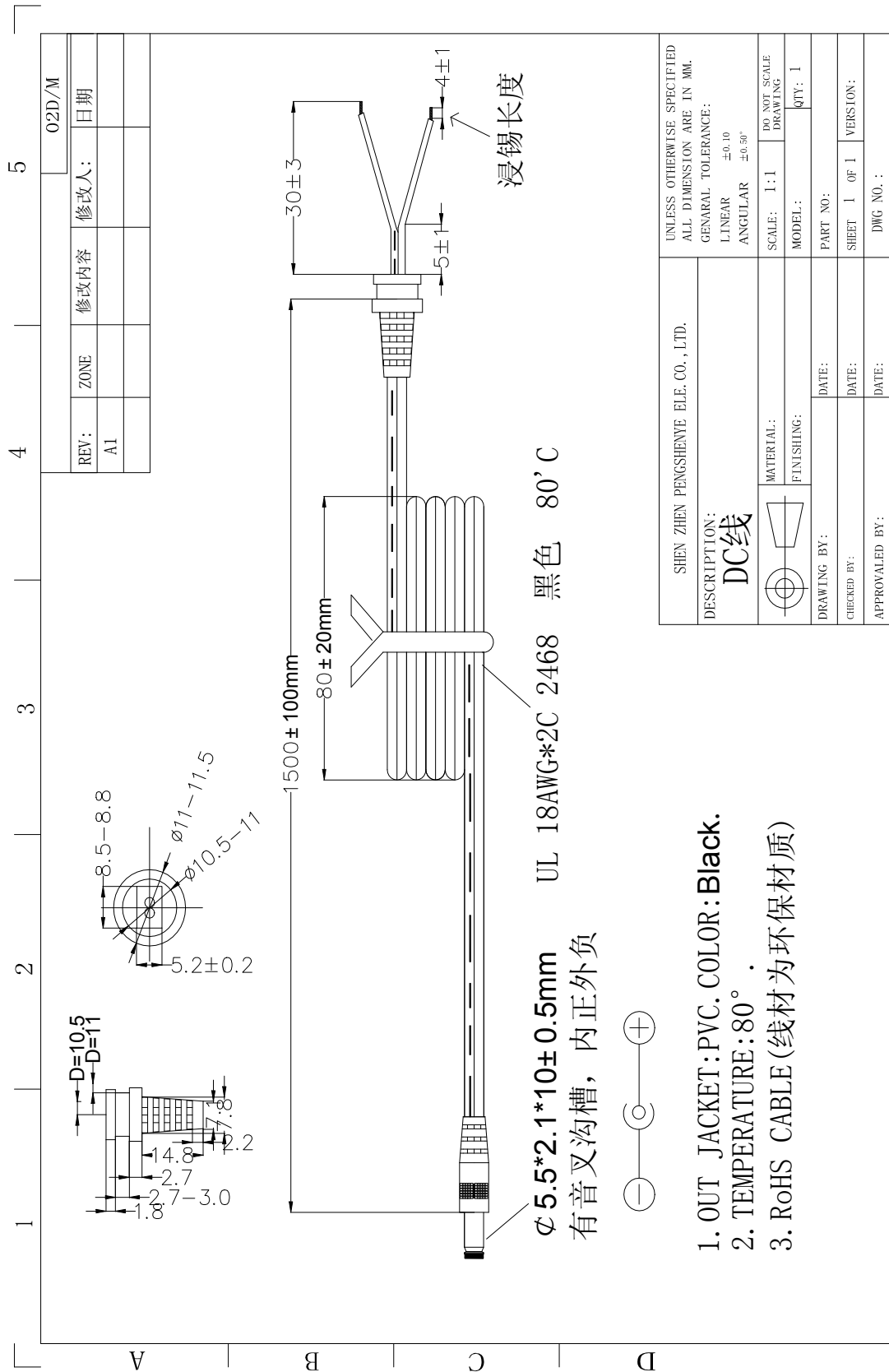
PAGE  
页码

6/9

# Dc Cord / DC 线材

Unit / 单位:mm

Tolerance / 公差:±0.5



SHEN ZHEN PENGSHENYE ELE. CO., LTD.		UNLESS OTHERWISE SPECIFIED ALL DIMENSION ARE IN MM.	
DESCRIPTION: <b>DC线</b>		GENERAL TOLERANCE: LINEAR ±0.10 ANGULAR ±0.50°	
MATERIAL: FINISHING:	SCALE: 1:1	DO NOT SCALE DRAWING	QTY: 1
DRAWING BY:	MODEL:	PART NO.:	VERSION:
CHECKED BY:	DATE:	SHEET 1 OF 1	DWG NO.:
APPROVED BY:	DATE:		

1. OUT JACKET: PVC. COLOR: Black.
2. TEMPERATURE: 80°.
3. RoHS CABLE (线材为环保材质)



EDITION  
版本

A0

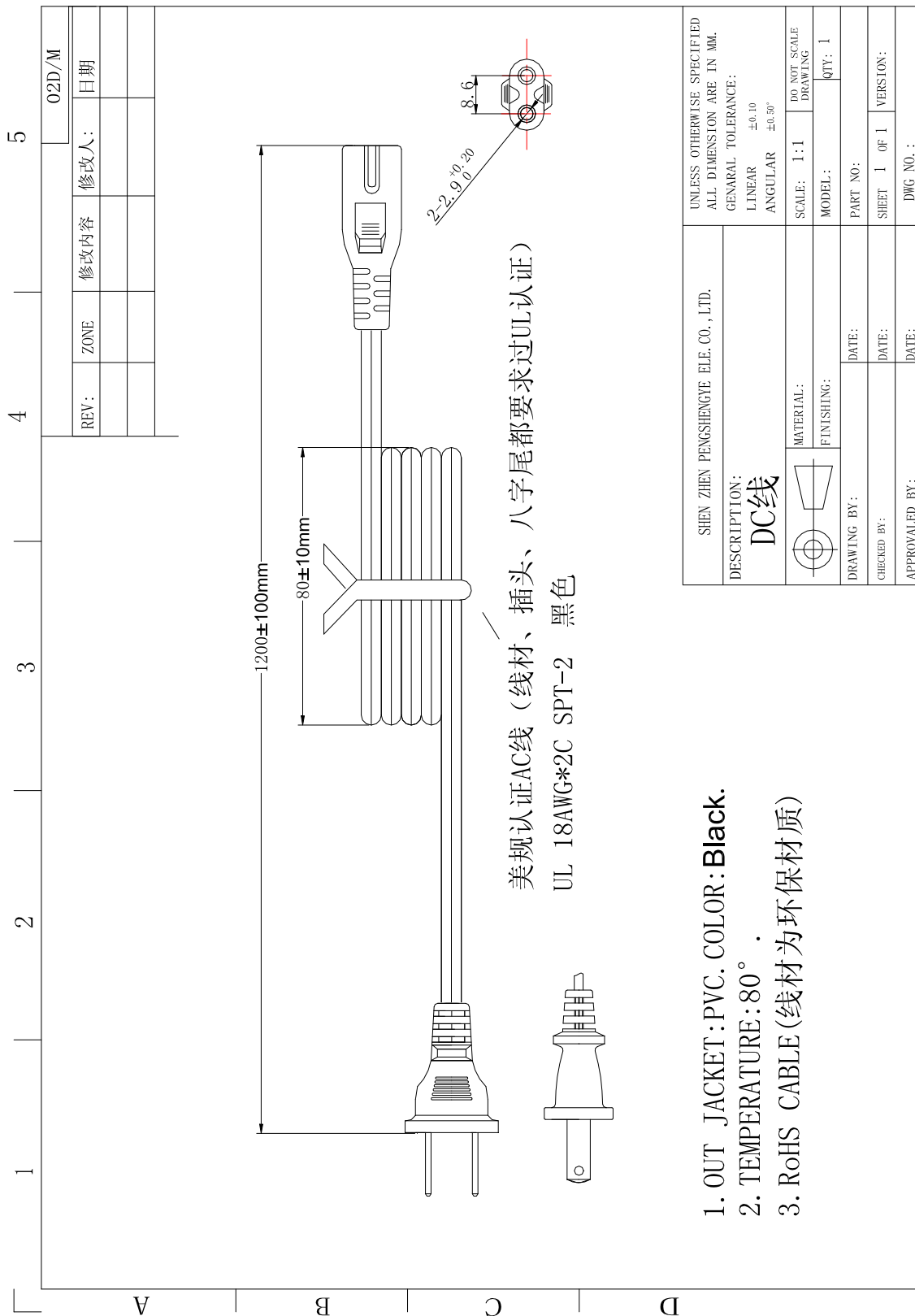
PAGE  
页码

7/9

# Ac Cord / AC 线材

Unit / 单位: mm

Tolerance / 公差: ±0.5



EDITION  
版本

A0

PAGE  
页码

8/9