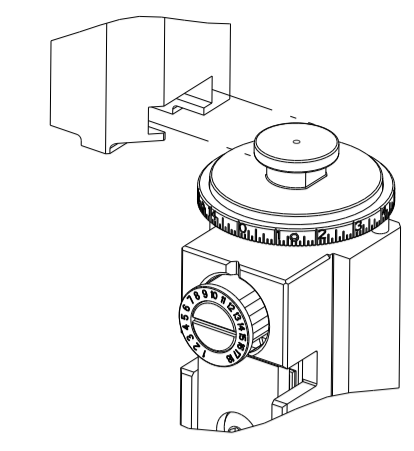


| PART NUMBER | REVISION | DESCRIPTION                     | FEED TYPE |
|-------------|----------|---------------------------------|-----------|
| 2150297-2   | G        | FINE CRIMP HEIGHT ADJUST        | PNEUMATIC |
| 7-2150297-2 | G        | PNEUMATIC AND CRIMP TOOLING KIT | PNEUMATIC |
| 7-2150297-7 | F        | CRIMP TOOLING KIT               | -         |

SUPERSEDED BY 4150155-2  
 SUPERSEDED BY 7-4150155-2

ATLANTIC VERSION TERMINATOR  
 INTERFACE ADAPTER



| LOC | DIST | REVISIONS |     |               |           |     |      |
|-----|------|-----------|-----|---------------|-----------|-----|------|
| A   | 66   | P         | LTN | DESCRIPTION   | DATE      | DWN | APVD |
|     |      | E         |     | ECR-20-004811 | 01APR2020 | MZ  | YY   |
|     |      | F         |     | ECR-21-003364 | 18MAR2021 | JWC | RR   |
|     |      | G         |     | ECR-22-130101 | 21FEB2022 | FZ  | TE   |
|     |      | G1        |     | ECR-23-170227 | 23MAR2023 | LG  | TE   |

| APPLICATOR DATA |                |      |
|-----------------|----------------|------|
| CRIMP           | SIZE           | TYPE |
| WIRE            | 2.29 mm [.090] | F    |
| INSUL           | 3.56 mm [.140] | F    |

APPLICATOR INSTRUCTIONS 408-35043

| TERMINAL DATA: TE TERMINAL                       |             | TE CRIMP SPECIFICATION       |             |
|--|-------------|------------------------------|-------------|
| TERMINAL NAME: RECPT, POSITIVE LOCK, .250 SERIES |             |                              |             |
| WIRE STRIP LENGTH                                |             | INSULATION DIAMETER RANGE    |             |
| 4.40-5.17 mm [.173-.204 IN]                      |             | Ø1.52-2.54 mm [.060-.100 IN] |             |
| TERMINAL APPLICATION SPECIFICATION               | 114-2074    | -                            | -           |
| TERMINALS APPLIED                                |             |                              |             |
| TE TERMINAL                                      | TE TERMINAL | TE TERMINAL                  | TE TERMINAL |
| 63119-1  | 63119-2     | 2238156-1                    | 2238156-2   |

| TERMINAL DATA: TE TERMINAL                                |             | TE CRIMP SPECIFICATION       |             |
|---|-------------|------------------------------|-------------|
| TERMINAL NAME: RECPT, POSITIVE LOCK, .250 SERIES, HI TEMP |             |                              |             |
| WIRE STRIP LENGTH   |             | INSULATION DIAMETER RANGE    |             |
| 4.40-5.17 mm [.173-.204 IN]                               |             | Ø1.52-2.54 mm [.060-.100 IN] |             |
| TERMINAL APPLICATION SPECIFICATION                        | 114-2074    | -                            | -           |
| TERMINALS APPLIED   |             |                              |             |
| TE TERMINAL   | TE TERMINAL | TE TERMINAL                  | TE TERMINAL |
| 2238139-1   |             |                              |             |

| WIRE SIZE | CRIMP HEIGHT mm [INCH]     | CRIMP HEIGHT REFERENCE SETTING |
|-----------|----------------------------|--------------------------------|
| 18 AWG    | 1.45+/-0.05 [.057+/-0.002] | 10.5                           |
| 20 AWG    | 1.35+/-0.05 [.053+/-0.002] | 11.4                           |
| 22 AWG    | 1.30+/-0.05 [.051+/-0.002] | 11.7                           |

| WIRE SIZE | CRIMP HEIGHT mm [INCH]     | CRIMP HEIGHT REFERENCE SETTING |
|-----------|----------------------------|--------------------------------|
| 18 AWG    | 1.55+/-0.05 [.061+/-0.002] | 10.5                           |
| 20 AWG    | 1.45+/-0.05 [.057+/-0.002] | 11.4                           |
| 22 AWG    | 1.37+/-0.05 [.054+/-0.002] | 11.7                           |

- RECOMMENDED SPARE PARTS
- REFER TO SUPPLIED INSTRUCTION SHEET FOR CLEANING, LUBRICATION AND STORAGE OF APPLICATOR.
- APPLY PART NUMBER 1-23419-5 LOCTITE TO THREADS OF ITEMS 50. APPLY PART NUMBER 2-23419-6 LOCTITE TO THREADS OF ITEM 242.
- CRIMP HEIGHT REFERENCE SETTING WAS THE SETTING USED WHEN THE APPLICATOR WAS QUALIFIED AT THE FACTORY. ADJUSTMENT MAY BE NECESSARY WHEN RUNNING APPLICATOR IN THE FIELD.
- TERMINAL PITCH IS NOT COMPATIBLE WITH MECHANICAL FEED.
- 6. UNLESS SPECIFIED OTHERWISE TORQUE VALUES SHALL BE USED PER DOCUMENT, 101-35000.
- TERMINAL LUBRICANT IS RECOMMENDED.

**\*WARNING**  
 ON INSTALLATION, SET WIRE DISC TO CRIMP HEIGHT REFERENCE SETTING FOR LARGEST WIRE SIZE. CRIMP HEIGHT REFERENCE SETTINGS GREATER THAN THE VALUE SHOWN MAY CAUSE DAMAGE TO THE CRIMP TOOLING, REFER TO THE INSTRUCTION SHEET FOR PROPER SETUP AND ADJUSTMENTS.

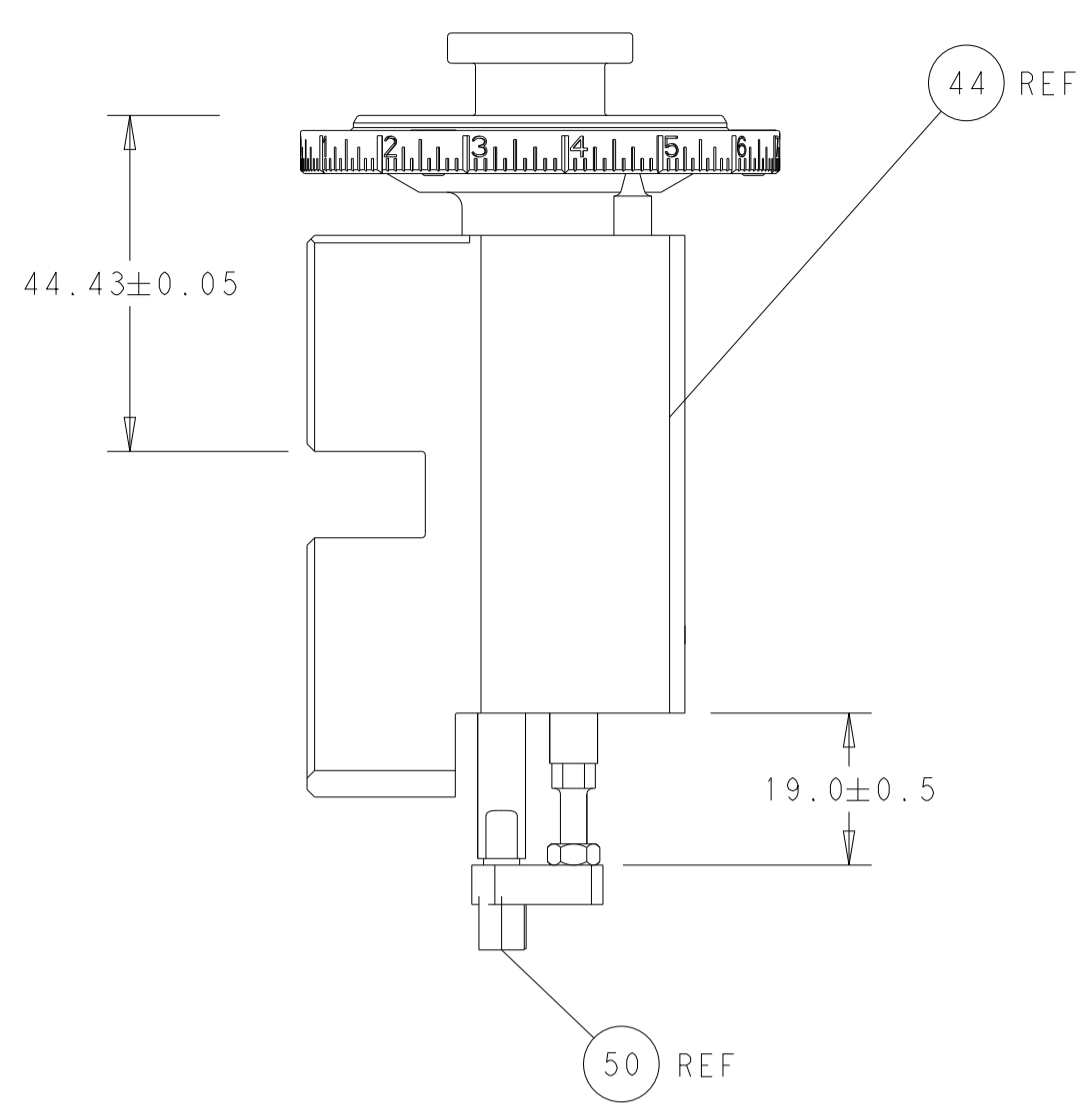
|   |     |     |             |                                     |     |
|---|-----|-----|-------------|-------------------------------------|-----|
| - | 1   | 1   | 2119791-5   | DEPRESSOR, WIRE                     | 286 |
| - | 1   | 1   | 2119641-1   | FEED CAM, AIR FEED                  | 248 |
| - | 1   | 1   | 2119082-9   | CAM, SNAIL, INSULATION ADJUSTMENT   | 244 |
| - | 1   | 1   | 2079764-1   | WASHER, WAVE SPRING, CREST-TO-CREST | 243 |
|   | 1   | 1   | 2119083-1   | RETAINER, INSULATION DIAL           | 242 |
| - | 1   | 1   | 2844940-4   | AIR FEED MODULE                     | 238 |
| - | 1   | 1   | 6-993111-6  | PIN, SLOTTED SPRING 3.0 X 14.0      | 177 |
| - | 1   | 1   | 8-22280-7   | SPRING, COMPRESSION                 | 176 |
| - | 1   | 1   | 1752353-2   | GUIDE PIN, HOLDDOWN                 | 175 |
| - | 1   | 1   | 1901680-2   | GUIDE PIN, HOLDDOWN                 | 174 |
| - | REF | REF | 994970-2    | COUNTER, MAGNETIC                   | 164 |
|   | 1   | 1   | 2119955-2   | ASSY, LUBRICATOR, END FEED          | 84  |
| - | 1   | 1   | 455888-6    | SPACER, CRIMPER                     | 82  |
| - | 1   | 1   | 1803203-1   | BLOCK, FRONT DEPRESSOR              | 77  |
| - | 1   | 1   | 1803607-4   | DOCUMENTATION PACKAGE               | 71  |
| - | 2   | 2   | 2-18032-2   | SCR, SET, FLT PNT, M3 X 10.0        | 70  |
| - | 1   | 1   | 2119740-1   | TAG, IDENTIFICATION                 | 67  |
| - | 2   | 2   | 2168078-1   | SCREW, DRIVE, RH, RoHS, 2 x .188    | 66  |
| - | 1   | 1   | 1976052-1   | HOLDDOWN, TERMINAL                  | 65  |
| - | 2   | 2   | 2168400-8   | SHCS, LOW HEAD, RoHS, M4 X 16       | 64  |
| - | 1   | 1   | 2168083-2   | SCR, SKT HD CAP, RoHS, M4 X 8.0     | 60  |
| - | 1   | 1   | 5-18022-5   | SCR, HEX HD CAP, M4 X 6.0           | 59  |
| - | 3   | 3   | 2168400-4   | SHCS, LOW HEAD, RoHS, M4 X 8        | 57  |
| - | 2   | 2   | 2168083-8   | SCR, SKT HD CAP, RoHS, M4 X 16      | 56  |
| - | 2   | 2   | 5018030-1   | NUT, HEX, REG, RoHS, M3             | 54  |
| - | 2   | 2   | 986965-8    | NUT, LOCK, HEX, TORQUE (M4)         | 53  |
| - | 1   | 1   | 1-5018030-0 | NUT, HEX, REG, RoHS, M3.5           | 52  |
| - | 1   | 1   | 2063961-1   | FEED FINGER                         | 51  |
|   | 1   | 1   | 1-1752354-3 | STANDOFF, HOLD-DOWN                 | 50  |
| - | 1   | 1   | 18023-9     | SCR, SKT HD CAP M4 X 6.0            | 49  |
| - | 1   | 1   | 2119655-5   | APPLICATOR BASIC ASSEMBLY, EF       | 46  |
| - | 1   | 1   | 1803517-1   | RAM ASSEMBLY, EF ATLANTIC           | 44  |
| - | 1   | 1   | 1803602-1   | SCR, BHSC, RoHS (M8 X 25)           | 41  |
| - | 7   | 7   | 1-18028-2   | WASHER, FLAT, REG M4                | 33  |
| - | 2   | 2   | 2168083-9   | SCR, SKT HD CAP, RoHS, M4 X 20      | 31  |
| - | 2   | 2   | 2168083-2   | SCR, SKT HD CAP, RoHS, M4 X 8.0     | 29  |
| - | 1   | 1   | 240639-1    | STRIPPER (MACHINING)                | 27  |
| - | 2   | 2   | 1-2168083-5 | SCR, SKT HD CAP, RoHS, M4 X 30      | 25  |
| - | 1   | 1   | 2-1752371-2 | PLATE, STRIP GUIDE                  | 24  |
| - | 1   | 1   | 240825-1    | PLATE, STRIP HOLD DOWN              | 23  |
| - | 2   | 2   | 22281-8     | SPRING, COMPRESSION                 | 22  |
| - | 1   | 1   | 1803292-4   | DRAG                                | 20  |
| - | 2   | 2   | 1901259-4   | GUIDE, LOWER STRIP                  | 18  |
| - | 4   | 4   | 1-2079383-1 | SCR, BHSC, RoHS (M6 X 12)           | 17  |
| - | 1   | 1   | 240641-1    | SPACER                              | 16  |
| - | 1   | 1   | 1752360-1   | SPACER, HOLD-DOWN                   | 13  |
|   | 1   | 1   | 240833-3    | PLATE, REAR SHEAR                   | 11  |
| - | -   | -   | -           | -                                   | 10  |
|   | 1   | 1   | 690482-7    | PLATE, FRONT SHEAR                  | 9   |
|   | 1   | 2   | 3-1803615-9 | ANVIL, COMBINATION, END FEED        | 8   |
|   | 1   | 1   | 3-690474-9  | BLADE, SLUG                         | 7   |
| - | -   | -   | -           | -                                   | 6   |
| - | 1   | 1   | 2-240641-7  | SPACER                              | 5   |
| - | 1   | 1   | 238011-2    | BLOCK, CRIMPER SPACER               | 4   |
|   | 1   | 2   | 2-1633961-3 | CRIMPER, INSULATION F PREMIUM       | 3   |
| - | 1   | 1   | 455888-8    | SPACER, CRIMPER                     | 2   |
|   | 1   | 2   | 3-1803762-2 | CRIMPER, WIRE F                     | 1   |

ATLANTIC VERSION  
 Shown on sheets 1 of 4 & 2 of 4  
 (Pacific version shown on sheets 3 of 4 & 4 of 4)

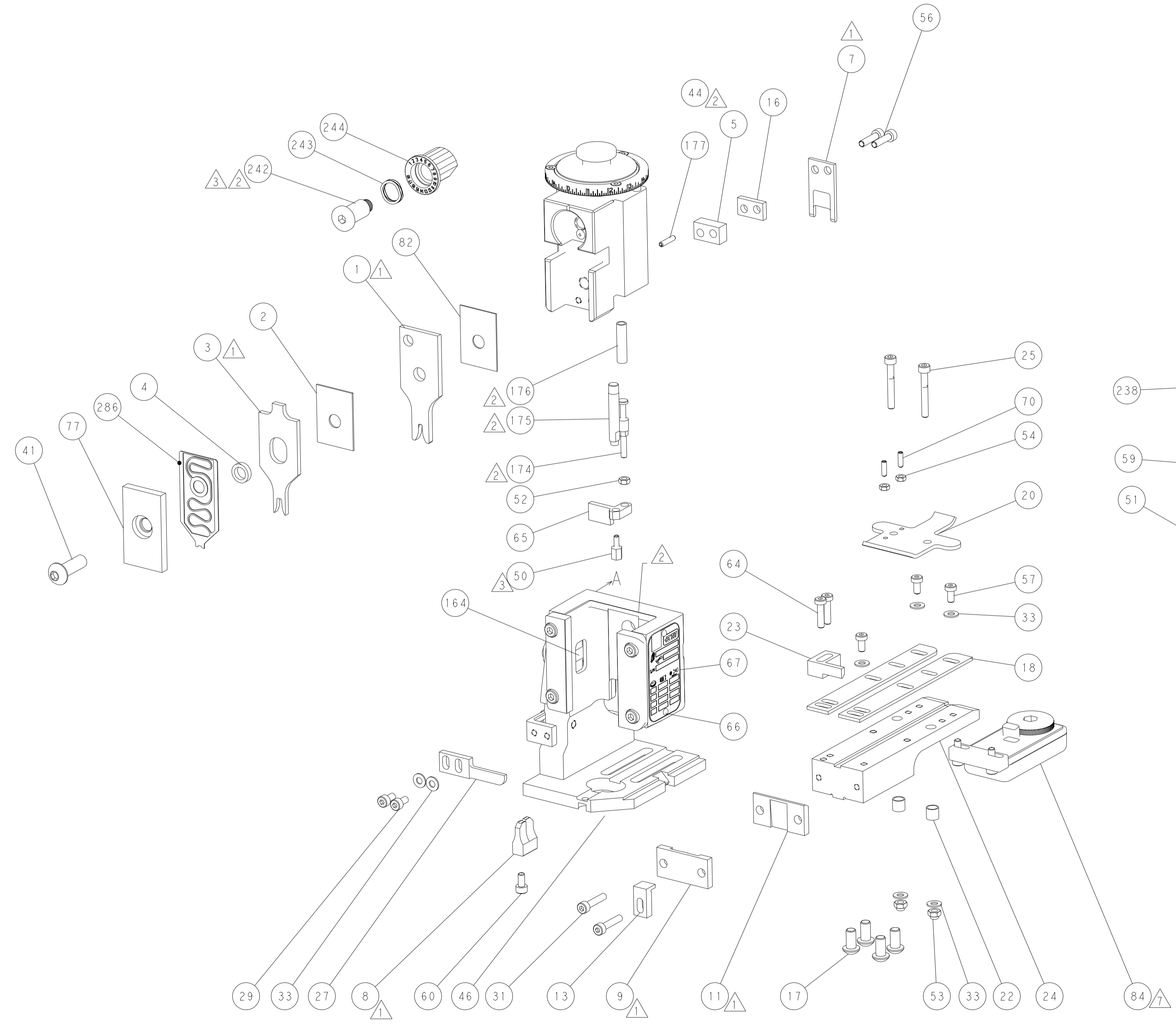
| DIMENSIONS: |         | TOLERANCES UNLESS OTHERWISE SPECIFIED: |         | MATERIAL: |         |
|-------------|---------|--|---------|-----------|---------|
| mm          | 0 PLC ± | 1 PLC ±                                | 2 PLC ± | 3 PLC ±   | 4 PLC ± |
|             | ANGLES  | FINISH                                 |         |           |         |

|  |                           |            |
|--|---------------------------|------------|
| OWN                                    | R. HUANG                  | 29OCT2012  |
| CHK                                    | S. XI                     | 29OCT2012  |
| APVD                                   | S. XI                     | 29OCT2012  |
| NAME                                   | Ocean End Feed Applicator |            |
| SIZE                                   | CAGE CODE                 | DRAWING NO |
| A1                                     | 00779                     | 2150297    |
| RESTRICTED TO                          | SCALE                     | SHEET      |
| -                                      | 1:1                       | 1 of 4     |
| Customer Accessible Production Drawing | REV                       | G1         |

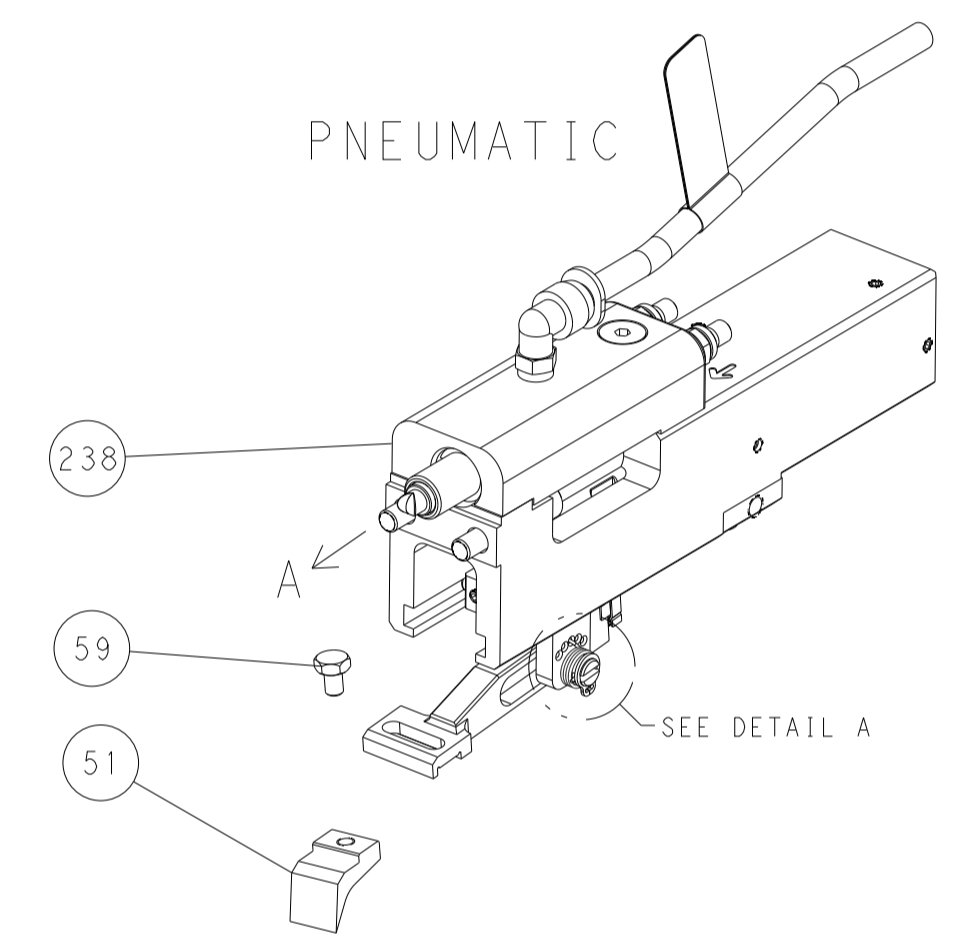
| LOC |     | DIST        |      | REVISIONS |      |  |  |
|-----|-----|-------------|------|-----------|------|--|--|
| P   | LTN | DESCRIPTION | DATE | OWN       | APVD |  |  |
| A   | 66  | SEE SHEET 1 |      |           |      |  |  |



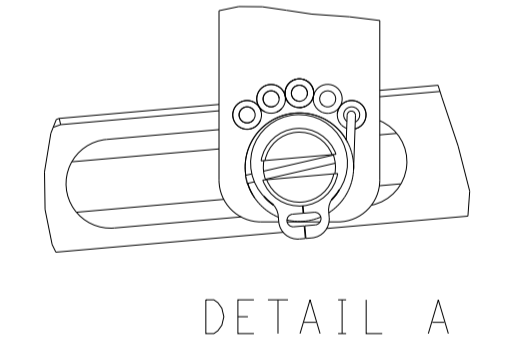
RAM AND HOLDDOWN SET-UP



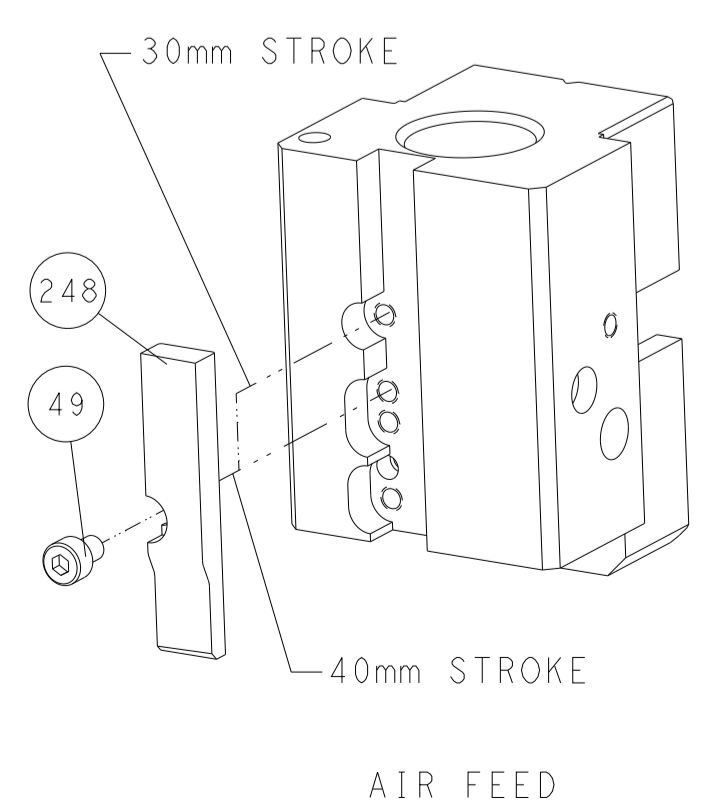
FEED TYPE



FEED SPRING SETTING POSITION



CAM POSITION



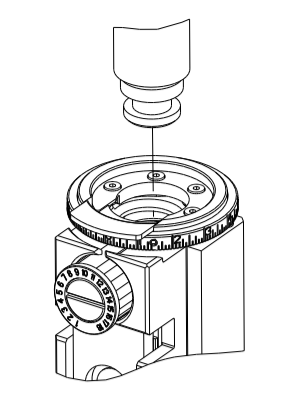
ATLANTIC VERSION  
 Shown on sheets 1 of 4 & 2 of 4  
 (Pacific version shown on sheets 3 of 4 & 4 of 4)

|             |          |  |         |                        |  |                        |                           |
|-------------|----------|--|---------|------------------------|--|------------------------|---------------------------|
| DIMENSIONS: |          | TOLERANCES UNLESS OTHERWISE SPECIFIED: |         | DWN K. HUANG 29OCT2012 |  | TE Connectivity        |                           |
| mm          | 0 PLC ±  | 1 PLC ±                                | 2 PLC ± | 3 PLC ±                | 4 PLC ±                                | 5 PLC ±                | Harrisburg, PA 17105-3608 |
|             | ANGLES ± | FINISH ±                               |         | CHK S.XI 29OCT2012     | NAME                                   | Ocean End Feed Applier |                           |
| MATERIAL    |          |  |         | APVD S.XI 29OCT2012    | PRODUCT SPEC                           | SIZE                   | RESTRICTED TO             |
|             |          |  |         |                        | APPLICATION SPEC                       | CAGE CODE              | DRAWING NO                |
|             |          |  |         |                        | WEIGHT                                 | 00779                  | 2150297                   |
|             |          |  |         |                        | Customer Accessible Production Drawing | SCALE                  | 1:1                       |
|             |          |  |         |                        |  | SHEET                  | 2 of 4                    |
|             |          |  |         |                        |  | REV                    | G1                        |

| PART NUMBER | REVISION | DESCRIPTION              | FEED TYPE |
|-------------|----------|--------------------------|-----------|
| 2-2150297-2 | G        | FINE CRIMP HEIGHT ADJUST | PNEUMATIC |
| 7-2150297-7 | F        | CRIMP TOOLING KIT        | -         |

SUPERSEDED BY 2-4150155-2

PACIFIC VERSION TERMINATOR  
 INTERFACE ADAPTER



| APPLICATOR DATA                      |                |      |
|--------------------------------------|----------------|------|
| CRIMP                                | SIZE           | TYPE |
| WIRE                                 | 2.29 mm (.090) | F    |
| INSUL                                | 3.56 mm (.140) | F    |
| APPLICATOR INSTRUCTIONS<br>408-35043 |                |      |

| TERMINAL DATA: TE TERMINAL                       |             | TE CRIMP SPECIFICATION       |             |
|--|-------------|------------------------------|-------------|
| TERMINAL NAME: RECPT, POSITIVE LOCK, .250 SERIES |             |                              |             |
| WIRE STRIP LENGTH                                |             | INSULATION DIAMETER RANGE    |             |
| 4.40-5.17 mm (.173-.204 IN)                      |             | Ø1.52-2.54 mm (.060-.100 IN) |             |
| TERMINAL APPLICATION SPECIFICATION               | 114-2074    | -                            | -           |
| TERMINALS APPLIED                                |             |                              |             |
| TE TERMINAL                                      | TE TERMINAL | TE TERMINAL                  | TE TERMINAL |
| 63119-1  | 63119-2     | 2238156-1                    | 2238156-2   |

| TERMINAL DATA: TE TERMINAL                                |             | TE CRIMP SPECIFICATION       |             |
|---|-------------|------------------------------|-------------|
| TERMINAL NAME: RECPT, POSITIVE LOCK, .250 SERIES, HI TEMP |             |                              |             |
| WIRE STRIP LENGTH   |             | INSULATION DIAMETER RANGE    |             |
| 4.40-5.17 mm (.173-.204 IN)                               |             | Ø1.52-2.54 mm (.060-.100 IN) |             |
| TERMINAL APPLICATION SPECIFICATION                        | 114-2074    | -                            | -           |
| TERMINALS APPLIED   |             |                              |             |
| TE TERMINAL   | TE TERMINAL | TE TERMINAL                  | TE TERMINAL |
| 2238139-1   |             |                              |             |

| WIRE SIZE | CRIMP HEIGHT mm [INCH]     | CRIMP HEIGHT REFERENCE SETTING |
|-----------|----------------------------|--------------------------------|
| 18 AWG    | 1.45+/-0.05 [.057+/-0.002] | 10.5                           |
| 20 AWG    | 1.35+/-0.05 [.053+/-0.002] | 11.1                           |
| 22 AWG    | 1.30+/-0.05 [.051+/-0.002] | 11.5                           |

| WIRE SIZE | CRIMP HEIGHT mm [INCH]     | CRIMP HEIGHT REFERENCE SETTING |
|-----------|----------------------------|--------------------------------|
| 18 AWG    | 1.55+/-0.05 [.061+/-0.002] | 10.5                           |
| 20 AWG    | 1.45+/-0.05 [.057+/-0.002] | 11.4                           |
| 22 AWG    | 1.37+/-0.05 [.054+/-0.002] | 11.7                           |

- RECOMMENDED SPARE PARTS
- REFER TO SUPPLIED INSTRUCTION SHEET FOR CLEANING, LUBRICATION AND STORAGE OF APPLICATOR.
- APPLY PART NUMBER 1-23419-5 LOCTITE TO THREADS OF ITEMS 50. APPLY PART NUMBER 2-23419-6 LOCTITE TO THREADS OF ITEM 242.
- CRIMP HEIGHT REFERENCE SETTING WAS THE SETTING USED WHEN THE APPLICATOR WAS QUALIFIED AT THE FACTORY. ADJUSTMENT MAY BE NECESSARY WHEN RUNNING APPLICATOR IN THE FIELD.
- TERMINAL PITCH IS NOT COMPATIBLE WITH MECHANICAL FEED.
- 6. UNLESS SPECIFIED OTHERWISE TORQUE VALUES SHALL BE USED PER DOCUMENT, 101-35000.
- TERMINAL LUBRICANT IS RECOMMENDED.

**\*WARNING**  
 ON INSTALLATION, SET WIRE DISC TO CRIMP HEIGHT REFERENCE SETTING FOR LARGEST WIRE SIZE. CRIMP HEIGHT REFERENCE SETTINGS GREATER THAN THE VALUE SHOWN MAY CAUSE DAMAGE TO THE CRIMP TOOLING, REFER TO THE INSTRUCTION SHEET FOR PROPER SETUP AND ADJUSTMENTS.

| LOC | DIST | REVISIONS |     |             |      |     |      |
|-----|------|-----------|-----|-------------|------|-----|------|
|     |      | P         | LTN | DESCRIPTION | DATE | OWN | APVD |
| A   | 66   | -         | -   | SEE SHEET 1 | -    | -   | -    |

|   |     |             |                                     |     |
|---|-----|-------------|-------------------------------------|-----|
| - | 1   | 2119791-5   | DEPRESSOR, WIRE                     | 286 |
| - | 1   | 2119082-9   | CAM, SNAIL, INSULATION ADJUSTMENT   | 244 |
| - | 1   | 2079764-1   | WASHER, WAVE SPRING, CREST-TO-CREST | 243 |
| - | 1   | 2119083-1   | RETAINER, INSULATION DIAL           | 242 |
| - | 1   | 2844940-4   | AIR FEED MODULE                     | 238 |
| - | 4   | 2079383-9   | SCR, BHSC, RoHS (M6 X 20)           | 186 |
| - | 1   | 6-993111-6  | PIN, SLOTTED SPRING 3.0 X 14.0      | 177 |
| - | 1   | 8-22280-7   | SPRING, COMPRESSION                 | 176 |
| - | 1   | 1752353-2   | GUIDE PIN, HOLDDOWN                 | 175 |
| - | 1   | 1901680-2   | GUIDE PIN, HOLDDOWN                 | 174 |
| - | REF | 994970-2    | COUNTER, MAGNETIC                   | 164 |
| - | 1   | 2119641-2   | FEED CAM, AIR FEED                  | 152 |
| - | 1   | 2168083-8   | SCR, SKT HD CAP, RoHS, M4 X 16      | 144 |
| - | 1   | 2119655-6   | APPLICATOR BASIC ASSEMBLY, EF       | 141 |
| - | 1   | 1803518-1   | RAM ASSEMBLY, EF PACIFIC            | 140 |
| - | 1   | 2119955-2   | ASSY, LUBRICATOR, END FEED          | 84  |
| - | 1   | 455888-6    | SPACER, CRIMPER                     | 82  |
| - | 1   | 1803203-1   | BLOCK, FRONT DEPRESSOR              | 77  |
| - | 1   | 1803607-4   | DOCUMENTATION PACKAGE               | 71  |
| - | 2   | 2-18032-2   | SCR, SET, FLT PNT, M3 X 10.0        | 70  |
| - | 1   | 2119740-1   | TAG, IDENTIFICATION                 | 67  |
| - | 2   | 2168078-1   | SCREW, DRIVE, RH, RoHS, 2 x .188    | 66  |
| - | 1   | 1976052-1   | HOLDDOWN, TERMINAL                  | 65  |
| - | 2   | 2168400-8   | SHCS, LOW HEAD, RoHS, M4 X 16       | 64  |
| - | 1   | 5-18022-5   | SCR, HEX HD CAP, M4 X 6.0           | 59  |
| - | 3   | 2168400-4   | SHCS, LOW HEAD, RoHS, M4 X 8        | 57  |
| - | 2   | 2168083-8   | SCR, SKT HD CAP, RoHS, M4 X 16      | 56  |
| - | 2   | 5018030-1   | NUT, HEX, REG, RoHS, M3             | 54  |
| - | 2   | 986965-8    | NUT, LOCK, HEX, TORQUE (M4)         | 53  |
| - | 1   | 1-5018030-0 | NUT, HEX, REG, RoHS, M3.5           | 52  |
| - | 1   | 2063961-1   | FEED FINGER                         | 51  |
| - | 1   | 1-1752354-3 | STANDOFF, HOLD-DOWN                 | 50  |
| - | 1   | 18023-9     | SCR, SKT HD CAP M4 X 6.0            | 49  |
| - | 1   | 1803602-1   | SCR, BHSC, RoHS (M8 X 25)           | 41  |
| - | 7   | 1-18028-2   | WASHER, FLAT, REG M4                | 33  |
| - | 2   | 2168083-9   | SCR, SKT HD CAP, RoHS, M4 X 20      | 31  |
| - | 2   | 2168083-2   | SCR, SKT HD CAP, RoHS, M4 X 8.0     | 29  |
| - | 1   | 240639-1    | STRIPPER (MACHINING)                | 27  |
| - | 2   | 1-2168083-5 | SCR, SKT HD CAP, RoHS, M4 X 30      | 25  |
| - | 1   | 2-1752371-2 | PLATE, STRIP GUIDE                  | 24  |
| - | 1   | 240825-1    | PLATE, STRIP HOLD DOWN              | 23  |
| - | 2   | 22281-8     | SPRING, COMPRESSION                 | 22  |
| - | 1   | 1803292-4   | DRAG                                | 20  |
| - | 2   | 1901259-4   | GUIDE, LOWER STRIP                  | 18  |
| - | 1   | 240641-1    | SPACER                              | 16  |
| - | 1   | 1752360-1   | SPACER, HOLD-DOWN                   | 13  |
| - | 1   | 240833-3    | PLATE, REAR SHEAR                   | 11  |
| - | -   | -           | -                                   | 10  |
| - | 1   | 690482-7    | PLATE, FRONT SHEAR                  | 9   |
| - | 1   | 3-1803615-9 | ANVIL, COMBINATION, END FEED        | 8   |
| - | 1   | 3-690474-9  | BLADE, SLUG                         | 7   |
| - | -   | -           | -                                   | 6   |
| - | 1   | 2-240641-7  | SPACER                              | 5   |
| - | 1   | 238011-2    | BLOCK, CRIMPER SPACER               | 4   |
| - | 1   | 2-1633961-3 | CRIMPER, INSULATION F PREMIUM       | 3   |
| - | 1   | 455888-8    | SPACER, CRIMPER                     | 2   |
| - | 1   | 3-1803762-2 | CRIMPER, WIRE F                     | 1   |

PACIFIC VERSION  
 Shown on sheets 3 of 4 & 4 of 4  
 (Atlantic version shown on sheets 1 of 4 & 2 of 4)

|  |         |  |         |              |         |               |        |
|--|---------|--|---------|--------------|---------|---------------|--------|
| DIMENSIONS:                            |         | TOLERANCES UNLESS OTHERWISE SPECIFIED: |         | DRAWING NO   |         | RESTRICTED TO |        |
| mm                                     | 0 PLC ± | 1 PLC ±                                | 2 PLC ± | 3 PLC ±      | 4 PLC ± | ANGLES ±      | FINISH |
| MATERIAL                               |         | FINISH                                 |         | WEIGHT       |         | SCALE         |        |
| -                                      |         | -                                      |         | -            |         | 1:1           |        |
| Customer Accessible Production Drawing |         |  |         | SHEET 3 OF 4 |         |               |        |

