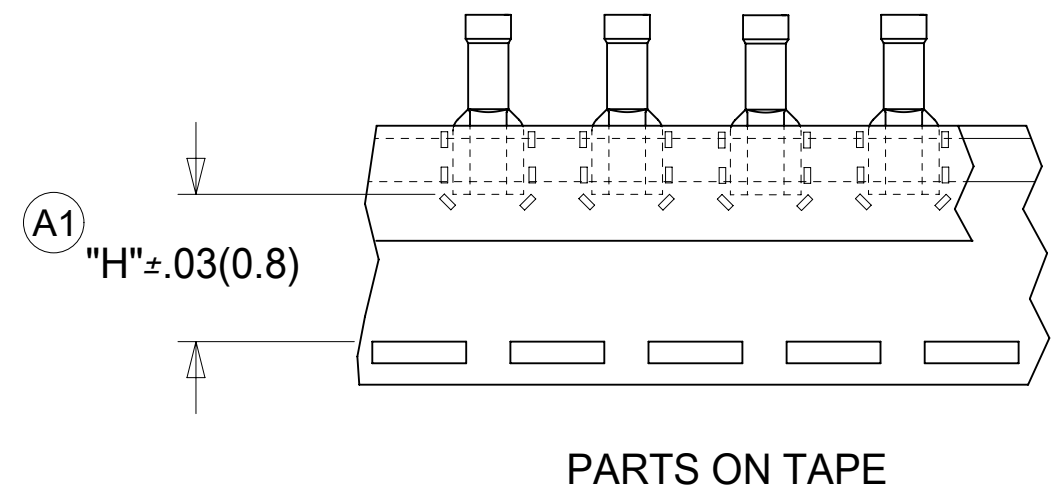
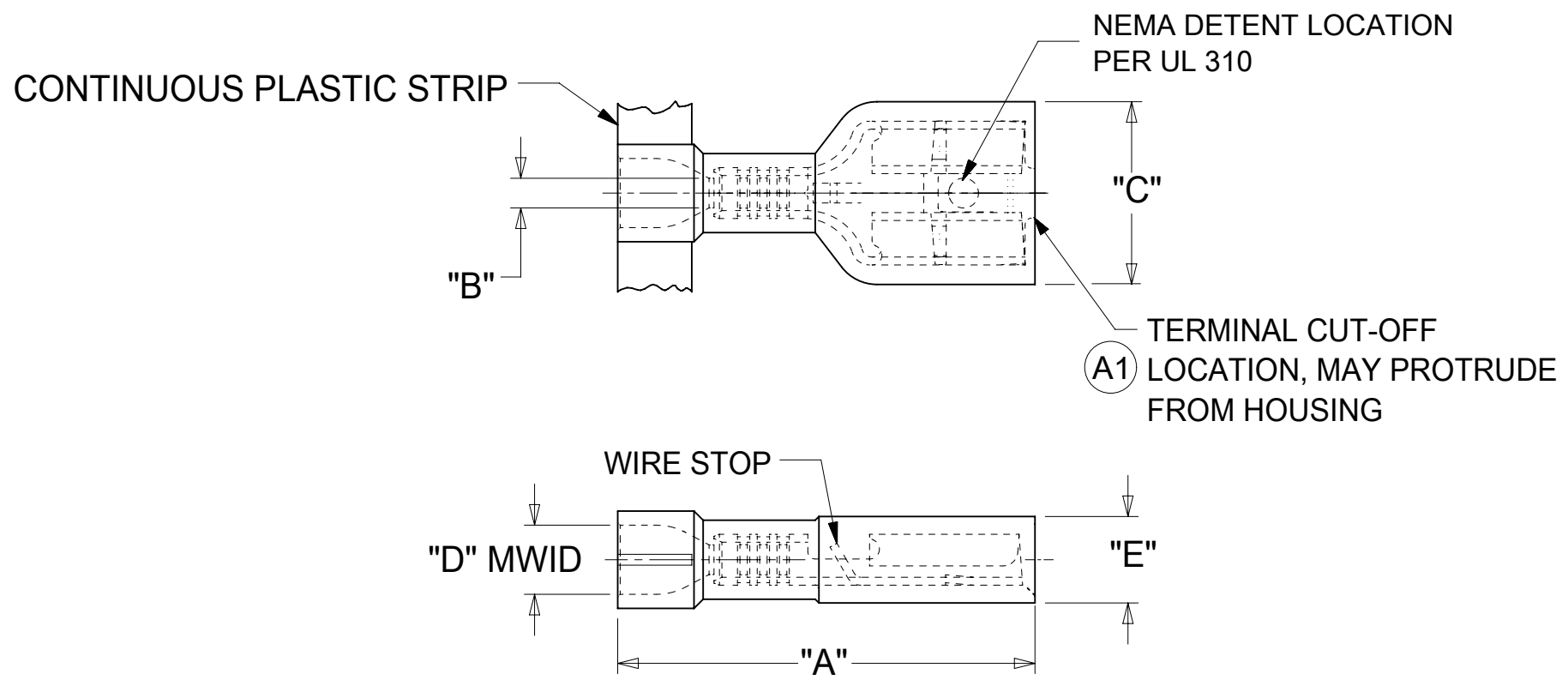


10	9	8	7	6	5	4	3	2	1						
LOOSE PIECE MATERIAL NUMBER	LOOSE PIECE ENGRNG NUMBER	CONTINUOUS STRIP MATERIAL NUMBER	CONTINUOUS STRIP ENGRNG NUMBER	MYLAR TAPE MATERIAL NUMBER	MYLAR TAPE ENGRNG NUMBER	WIRE RANGE AWG	FITS MALE TAB SIZE	HOUSING COLOR	STOCK THICK	"A" MAX.	"B" MIN.	"C" MAX.	"D" MWID	"E" MAX.	"H" NOMINAL
192760002	AA-2201-LIF	192760001	AA-2201C-LIF	192760003	AA-2201T-LIF	22-18	.250x.032 (6.35x0.81)	RED	.016/0.41	.86 /21.8	.058 /1.47	.38 /9.7	.135 /3.43	.18 /4.6	.56 /14.2
192760005	BB-2206-LIF	192760004	BB-2206C-LIF	192760006	BB-2206T-LIF	16-14	.250x.032 (6.35x0.81)	BLUE	.016/0.41	.86 /21.8	.083 /2.10	.38 /9.7	.160/4.06	.18 /4.6	.56 /14.2
192760008	C-2293-LIF	192760007	C-2293C-LIF	192760009	C-2293T-LIF	12-10	.250x.032 (6.35x0.81)	YELLOW	.018/0.46	1.03 /26.1	.117/2.97	.38 /9.7	.235 /5.97	.22 /5.6	.51 /12.9



- NOTES:
- MATERIALS:
 TERMINAL: MATTE-TIN PLATED BRASS
 INSULATION: NYLON 6/6 94V-2,
 SEE CHART FOR COLORS
 - PRODUCT SPECIFICATION: PS-19902-012
 - MWID = MAXIMUM WIRE INSULATION DIAMETER
 - PARTS ARE RoHS COMPLIANT

SYMBOLS		THIS DRAWING CONTAINS INFORMATION THAT IS PROPRIETARY TO MOLEX ELECTRONIC TECHNOLOGIES, LLC AND SHOULD NOT BE USED WITHOUT WRITTEN PERMISSION		
DIMENSION UNITS	SCALE	CURRENT REV DESC: ADD CUT-OFF NOTE		
∇ = 0	IN/MM	NTS	molex QUIXON LOW INSERT FORCE FULLY INSUL QUICK DISCNT INSULKRIMP 22-10 AWG PRODUCT CUSTOMER DRAWING DOCUMENT NUMBER: SD-19276-001 DOC TYPE: PSD DOC PART: 001 REVISION: A1 MATERIAL NUMBER: SEE CHART CUSTOMER: GENERAL MARKET SHEET NUMBER: 1 OF 1	
∇ = 0	GENERAL TOLERANCES (UNLESS SPECIFIED)			
∇ = 0		MM		INCH
∇ = 0	4 PLACES	±		±
∇ = 0	3 PLACES	±		± 0.005
∇ = 0	2 PLACES	± 0.13	± 0.01	
∇ = 0	1 PLACE	± 0.25	± 0.02	
∇ = 0	0 PLACES	±	±	
∇ = 0	ANGULAR TOL	± 0.5°		
∇ = 0	DRAFT WHERE APPLICABLE MUST REMAIN WITHIN DIMENSIONS	THIRD ANGLE PROJECTION	DRAWING	
∇ = 0		SERIES	19276	