

## Flush-type connector - SACC-DSIV-M 8MS-3CON-L 90 - 1440070

Please be informed that the data shown in this PDF Document is generated from our Online Catalog. Please find the complete data in the user's documentation. Our General Terms of Use for Downloads are valid (<http://download.phoenixcontact.com>)



Sensor/actuator flush-type connector, male, 3-pos., M8, rear/screw mounting with M8 thread, with polarity protection, with angled solder connection



### Key commercial data

|                                      |          |
|--------------------------------------|----------|
| Packing unit                         | 1 1      |
| Minimum order quantity               | 20 1     |
| Weight per Piece (excluding packing) | 0.1 GRM  |
| Custom tariff number                 | 85366990 |
| Country of origin                    | Germany  |

### Technical data

#### Ambient conditions

|                                 |                  |
|---------------------------------|------------------|
| Ambient temperature (operation) | -25 °C ... 85 °C |
| Degree of protection            | IP67             |

#### General

|                        |                              |
|------------------------|------------------------------|
| Rated current at 40°C  | 4 A                          |
| Rated voltage          | 60 V                         |
| Number of positions    | 3                            |
| Contact resistance     | ≤ 3 mΩ                       |
| Insulation resistance  | ≥ 100 MΩ                     |
| Coding                 | A - standard                 |
| Standards/regulations  | M8 connector IEC 61076-2-104 |
| Status display         | No                           |
| Surge voltage category | II                           |
| Pollution degree       | 3                            |
| Connection method      | Solder pins                  |

# Flush-type connector - SACC-DSIV-M 8MS-3CON-L 90 - 1440070

## Technical data

### General

|               |                                    |
|---------------|------------------------------------|
| Mounting type | Rear mounting M8 x 1 With flat nut |
|---------------|------------------------------------|

### Material

|   |                     |
|---|---------------------|
| Inflammability class according to UL 94 | HB                  |
| Contact material                        | Cu alloy            |
| Contact surface material                | Au                  |
| Contact carrier material                | PA 66               |
| Material, knurls                        | Nickel-plated brass |
| Sealing material                        | NBR                 |

## Classifications

### eCl@ss

|            |          |
|------------|----------|
| eCl@ss 4.0 | 27250313 |
| eCl@ss 4.1 | 27250313 |
| eCl@ss 5.0 | 27143423 |
| eCl@ss 5.1 | 27143423 |
| eCl@ss 6.0 | 27143423 |
| eCl@ss 7.0 | 27449001 |
| eCl@ss 8.0 | 27449001 |

### ETIM

|          |          |
|----------|----------|
| ETIM 3.0 | EC002061 |
| ETIM 4.0 | EC002061 |
| ETIM 5.0 | EC002061 |

### UNSPSC

|               |          |
|---------------|----------|
| UNSPSC 6.01   | 31251501 |
| UNSPSC 7.0901 | 31251501 |
| UNSPSC 11     | 31251501 |
| UNSPSC 12.01  | 31251501 |
| UNSPSC 13.2   | 31251501 |

## Approvals

### Approvals

---

# Flush-type connector - SACC-DSIV-M 8MS-3CON-L 90 - 1440070

## Approvals

Approvals

GOST

---

Ex Approvals

---

Approvals submitted

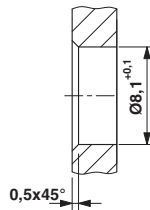
---

## Approval details

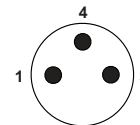


## Drawings

Dimensioned drawing



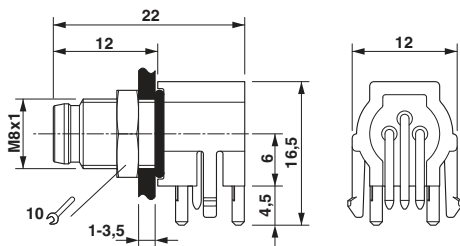
Schematic diagram



Pin assignment M8 plug, 3-pos., view male side

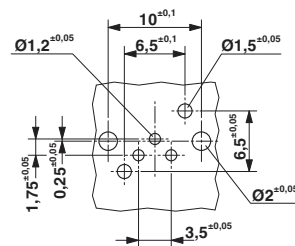
Mounting panel with feed-through hole

Dimensioned drawing



M8 flush-type plug

Drilling diagram



Drilling diagram

