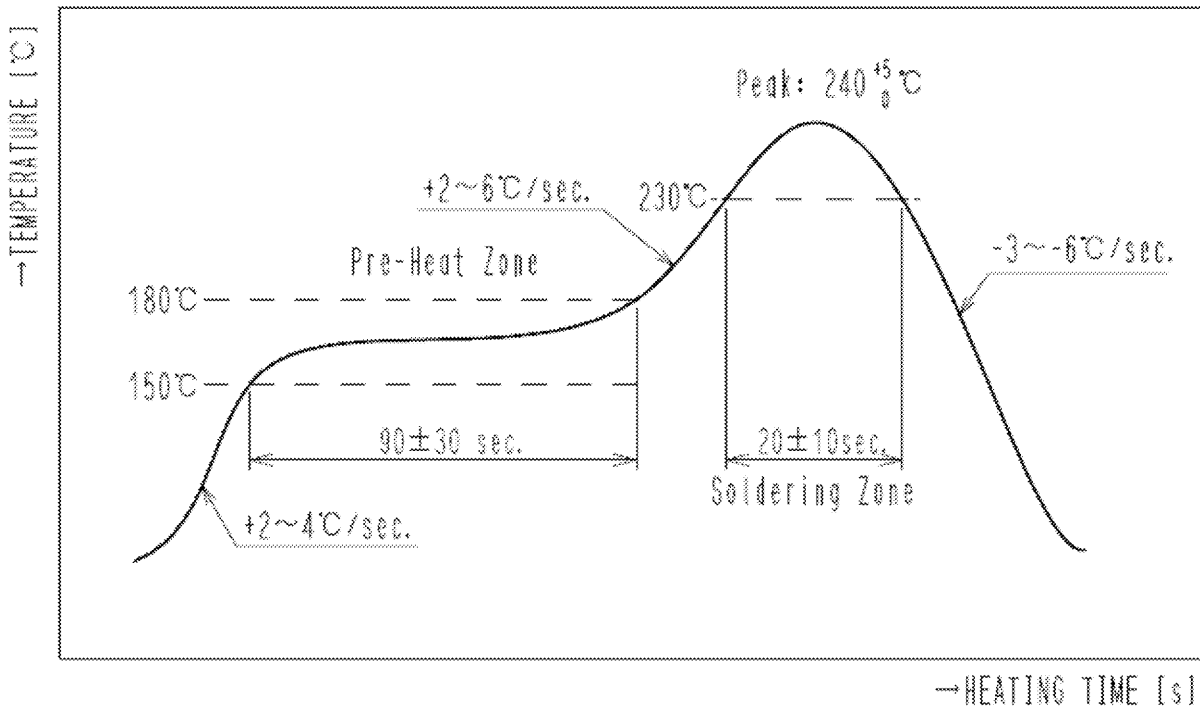


SPECIFICATIONS


ITEM	TEST METHOD	REQUIREMENTS	QT	AT
------	-------------	--------------	----	----

RECOMMENDED TEMPERATURE PROFILE (REFLOW SOLDERING, MOUNTING AREA)

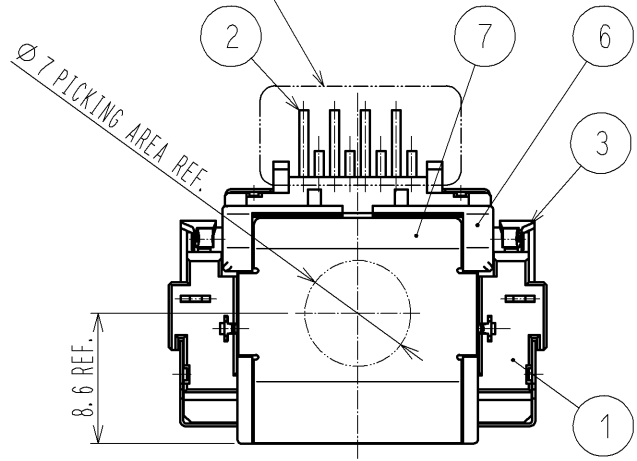
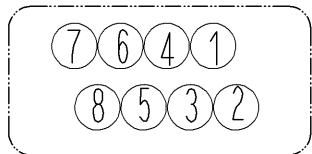


RECOMMENDED MANUAL SOLDERING TEMPERATURE

- TEMPERATURE : 350±10°C
- HEATING TIME : 4sec. MAX.

Note QT:Qualification Test AT:Assurance Test X:Applicable Test		DRAWING NO.	ELC4-127281-00		
HRS	SPECIFICATION SHEET		PART NO.	TM25RS-5CNA-88	
	HIROSE ELECTRIC CO., LTD.		CODE NO	CL222-2967-7-00	 2/2

2 MOUNTING AREA PIN ASSIGNMENT

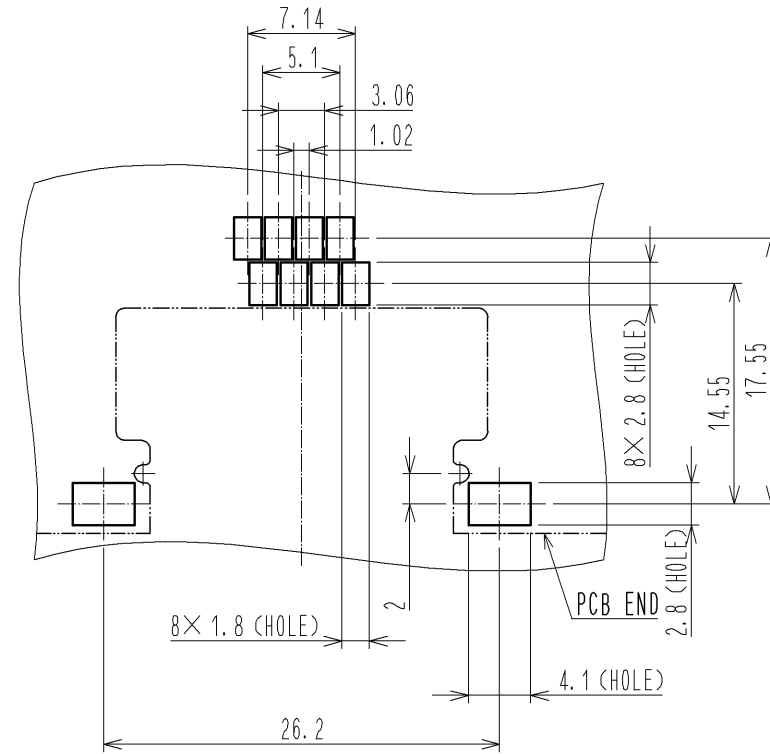
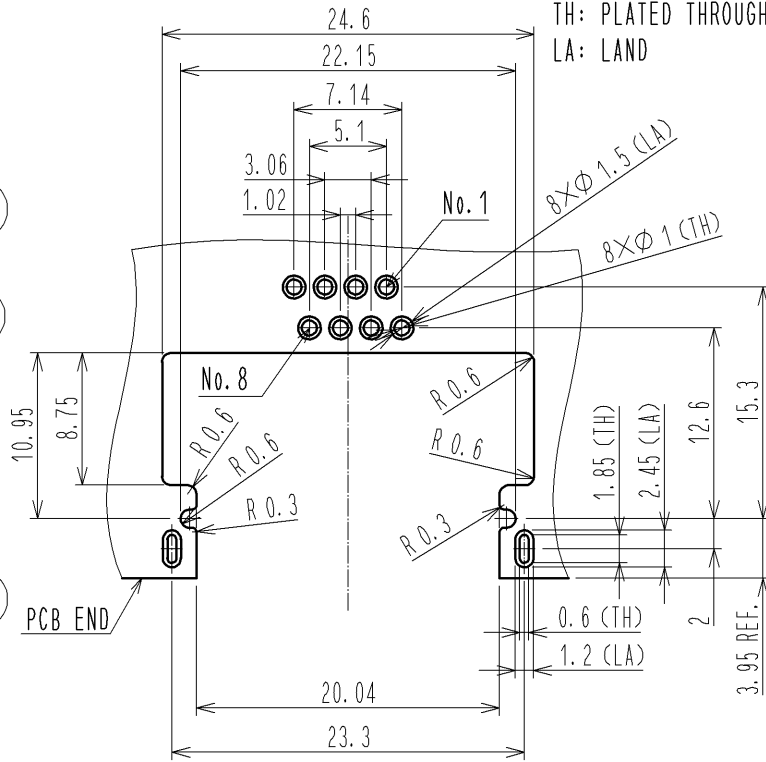


RECOMMENDED PC BORAD PATTERN

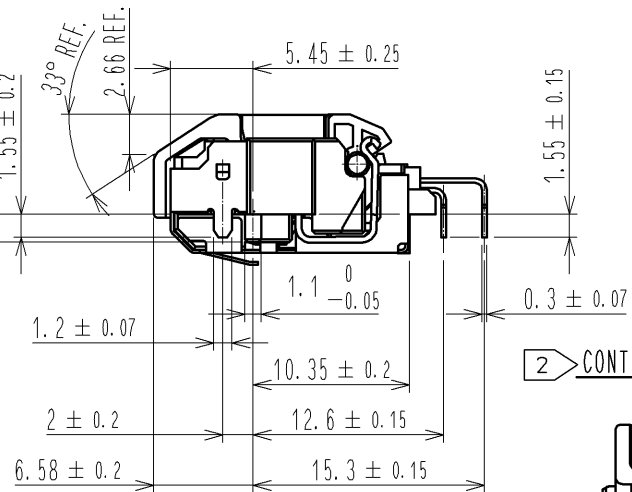
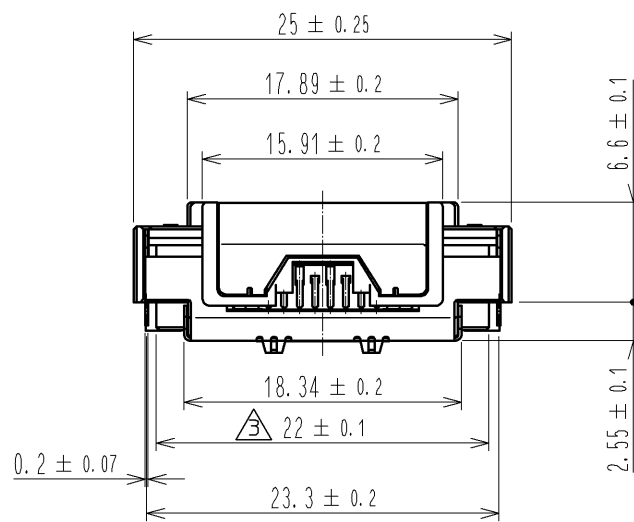
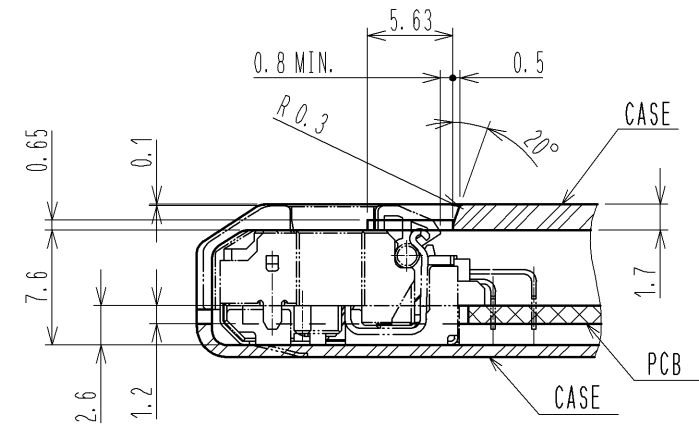
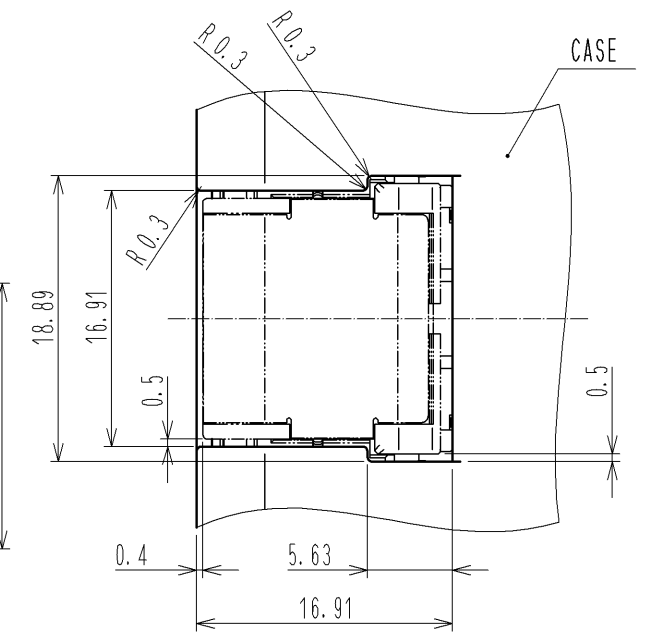
PCB THICKNESS: t1.2
TH: PLATED THROUGH HOLE
LA: LAND

METAL MASK DIMENSIONS FOR REFERENCE

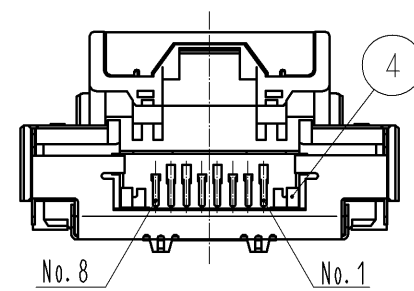
THICKNESS : t0.12



INSTALLATION DIMENSIONS FOR REFERENCE



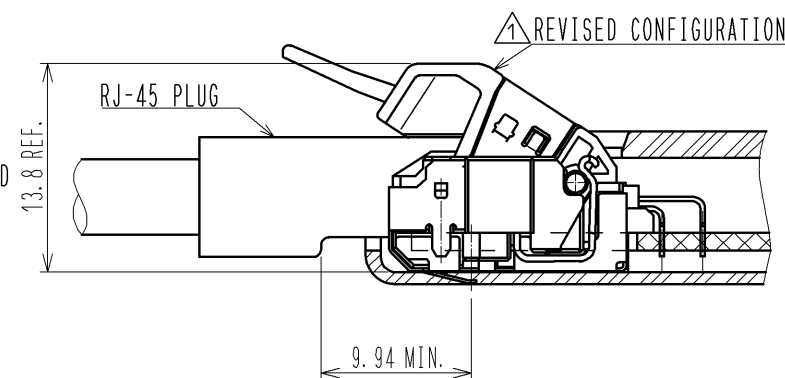
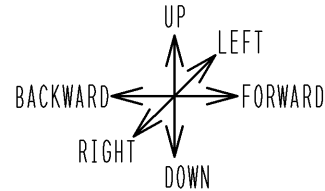
2 CONTACT AREA PIN ASSIGNMENT



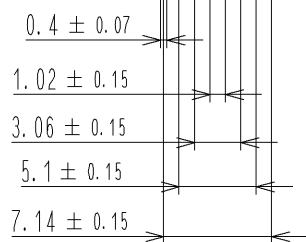
NOTES

- 1 WRENCHING STRENGTH IN EACH DIRECTION IS STATED AS FOLLOWS.
BACKWARD AND FORWARD : 60N MIN.
RIGHT AND LEFT : 30MIN.
UP AND DOWN : 15N MIN. MOVING PART SHALL NOT BE COME OFF.
AFTER IT IS EXAMINATED 20 TIMES : 10N MIN.
- 2 PIN ASSIGNMENT IS AS SHOWN IN FIGURE.
PLEASE NOTE THE PIN ASSIGNMENT IS FOR MOUNTING AREA AND DIFFERENT FROM THAT FOR CONTACT AREA.

1 WRENCHING DIRECTION



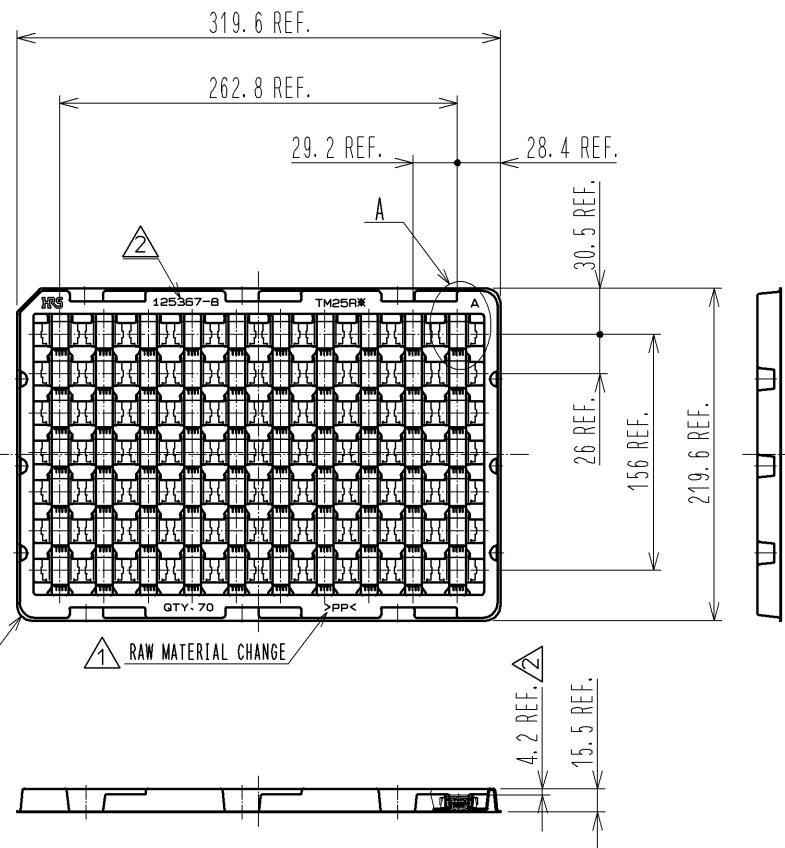
LOT No.



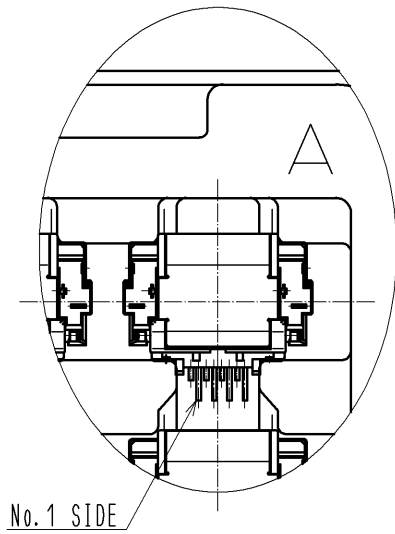
4	STAINLESS STEEL		8	PP	CLEAR, TRAY
3	STAINLESS STEEL		7	STAINLESS STEEL	NICKEL PLATING : 0.1µm MIN.
2	PHOSPHOR BRONZE	CONTACT AREA : GOLD PLATING 0.2µm MIN. MOUNTING AREA : GOLD PLATING 0.03µm MIN. UNDER PLATING : NICKEL PLATING 1µm MIN.	6	POLYAMIDE	BLACK, UL94V-0
1	POLYAMIDE	BLACK, UL94V-0	5	STAINLESS STEEL	BOTH SIDE TIN PLATING 38µm MIN. UNDER PLATING NICKEL PLATING 125µm MIN.
NO.	MATERIAL	FINISH . REMARKS	NO.	MATERIAL	FINISH . REMARKS
UNITS mm		SCALE 2 : 1	COUNT 1	DESCRIPTION OF REVISIONS	
				DESIGNED HN. ANDO	CHECKED AH. KODAMA
				DATE 12. 11. 14	
APPROVED : KN. ICHIKAWA		11. 01. 13		DRAWING NO. EDC3-127281-00	
CHECKED : KN. ICHIKAWA		11. 01. 13		PART NO. TM25RS-5CNA-88	
DESIGNED : HN. ANDO		11. 01. 13		CODE NO. CL222-2967-7-00	
DRAWN : HN. ANDO		11. 01. 13			

3 PACKING OF TRAY (FREE)

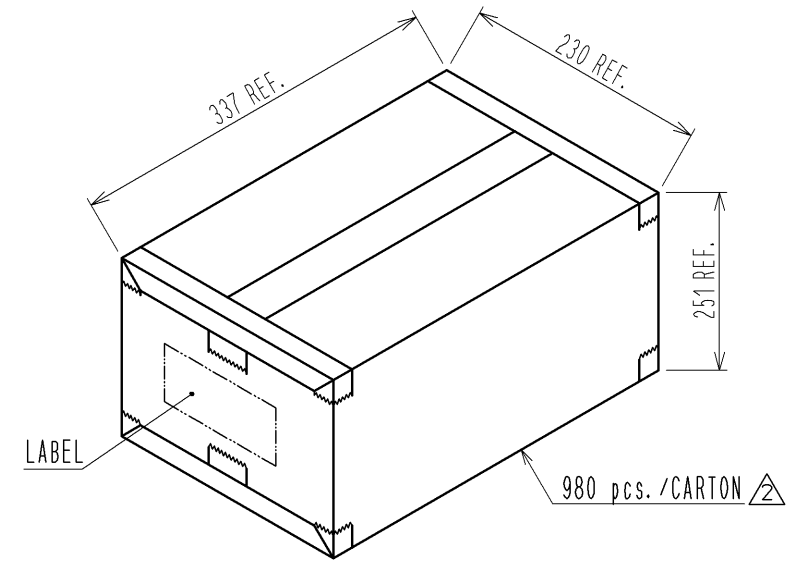
A TYPE 70 pcs./TRAY



A (1:1)

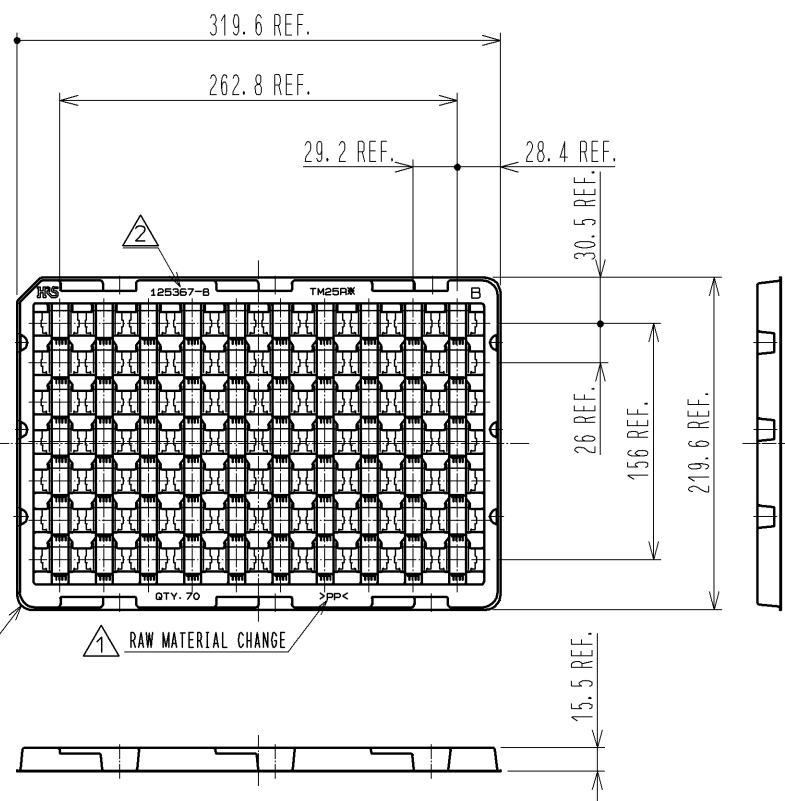


4 PACKING OF CARTON (FREE)



5 4 ACCUMULATION OF TRAY (FREE)

B TYPE 70 pcs./TRAY



CORRUGATED CARDBOARD

PP BAND

CORRUGATED CARDBOARD

EMPTY TRAY : 1 pcs.

TRAY : 7 pcs.

CONTENTS OF A LABEL

荷 札				
得意先名 (Customer Name)		納入場所 (Shipment to)		
注文番号 (P/O No.)	得意先品名 (Customer Part Name)		自販	
受注製番	1箱の入り数 (This box contains)	個 (Q'ty)	個 (Pcs)	発送場所
搬出登録 (Delivery Register No.)				得意先数量 (Pcs)
品目コード	仕様	HRS品名 (Hirose Part Number)		
仕様名				工事番号
特記事項				
二枚分岐		営業コード		MADE IN JAPAN
ヒロセ電機株式会社 Hirose Electric Co., Ltd.				

NOTES 3 PACKING : 70 pcs./TRAY

4 THE PACKING SPECIFICATION CAN VARY WITH PACKING QUANTITIES.

5 2 SETS OF BANNED TRAYS ARE USED IN CARTON BOX WHEN PRODUCTS ARE STORED MAXIMUM.

HRS	DRAWING NO.	EDC3-127281-00
	PART NO.	TM25RS-5CNA-88
	CODE NO.	CL222-2967-7-00
		3/2