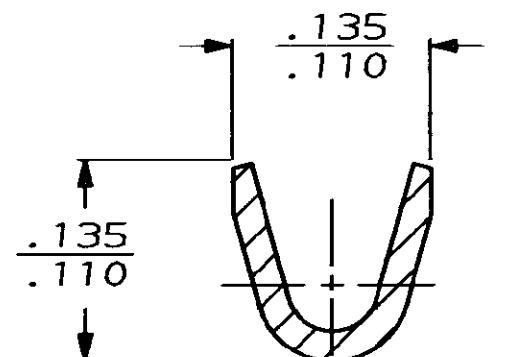
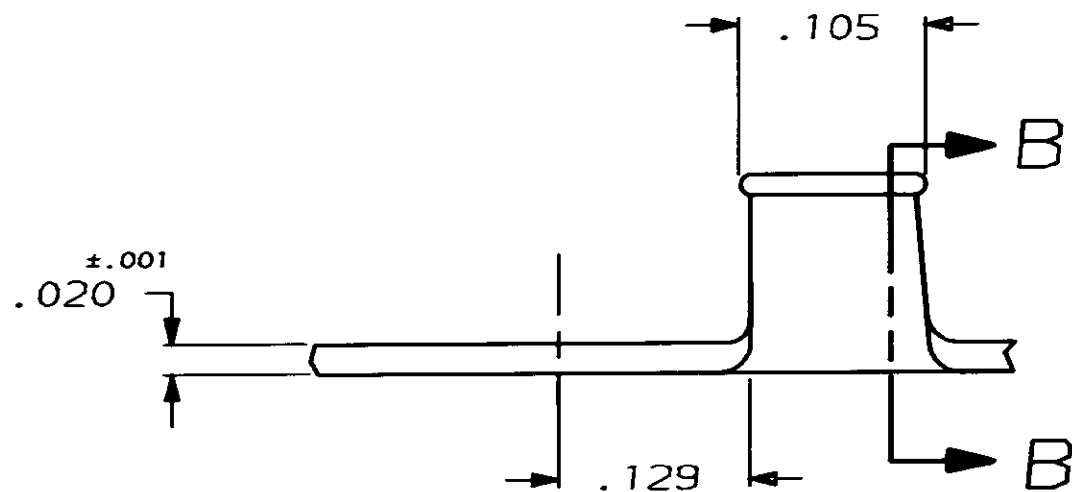
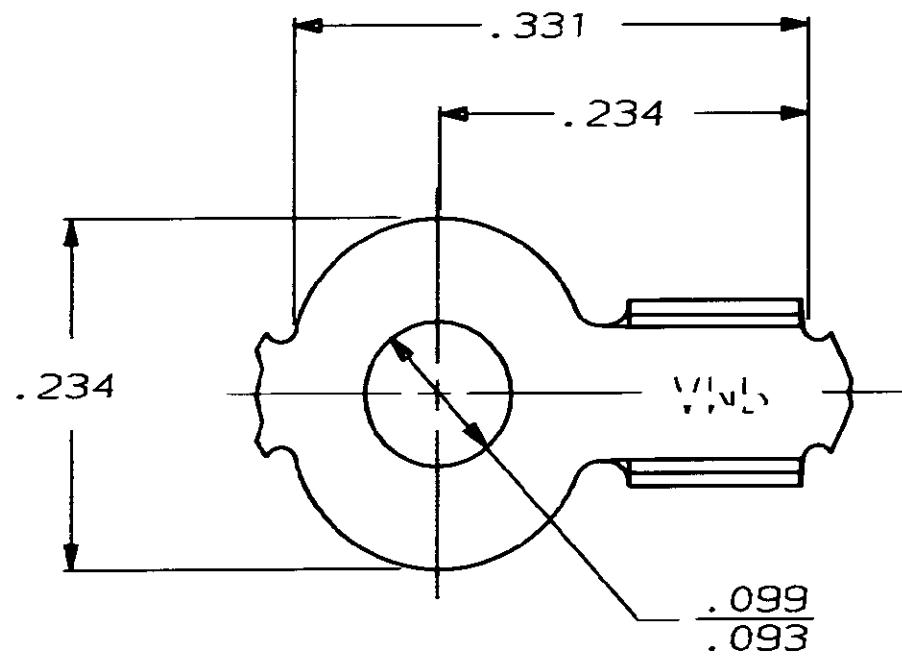


THIS DRAWING IS UNPUBLISHED. RELEASED FOR PUBLICATION ,19 .
 © COPYRIGHT 19 BY AMP INCORPORATED, HARRISBURG, PA. ALL INTERNATIONAL RIGHTS RESERVED. AMP PRODUCTS MAY BE COVERED BY U.S. AND FOREIGN PATENTS AND/OR PATENTS PENDING.

| LOC | DIST | P | F | REVISIONS | | | | |
|-----|------|---|---|-----------|-----|-----------------|--------|----------|
| AF | 50 | | | ZONE | LTR | DESCRIPTION | DATE | APPROVED |
| | | | | | B | REV PER AF-6785 | 7/5/90 | PF GY |



| | | | | |
|--|-----------|-------------------------|---|------------|
| UNLESS OTHERWISE SPECIFIED DIMENSIONS ARE IN INCHES TOLERANCES ON: | | DR <i>J.R.R.</i> 1/7/87 | 20-16 | 63457-1 |
| 2 PL DEC ± - | | CHK G. YETTER 1/12/87 | WIRE RANGE | PART NO |
| 3 PL DEC ± .010 | | APPD R. FRANTZ 1/12/87 | AMP INCORPORATED Harrisburg, Pa. 17105 | |
| ANGLES ± - | | APPD T. SHUTTER 1/12/87 | | |
| MATERIAL | #2H BRASS | PRODUCT SPEC | NAME | |
| FINISH | TIN | APPLICATION SPEC | TERMINAL, RING | |
| | | WEIGHT | SIZE | FSCM NO |
| | | | B | 00779 |
| | | | SCALE | DRAWING NO |
| | | | NTS | 63457 |
| | | | | SHEET |
| | | | | 1 OF 1 |