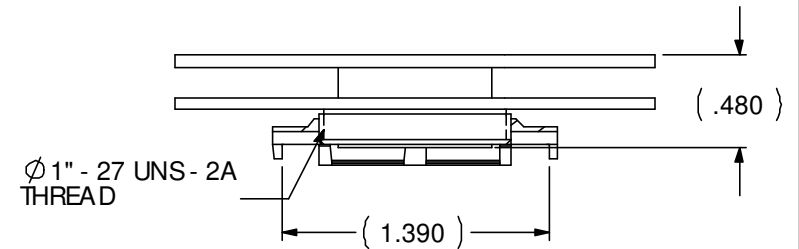
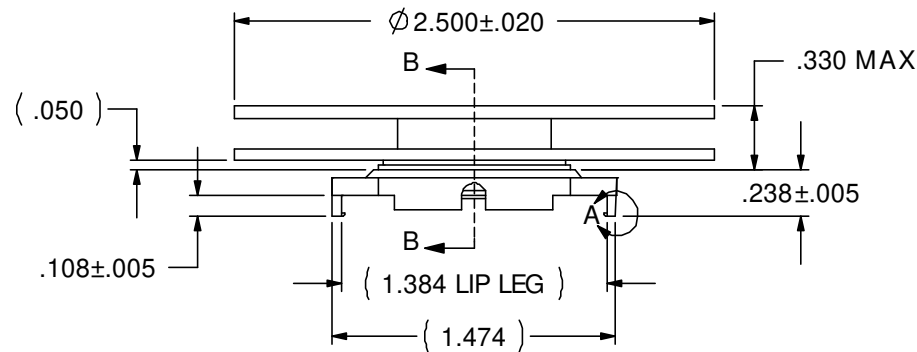
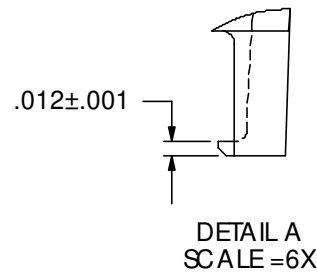
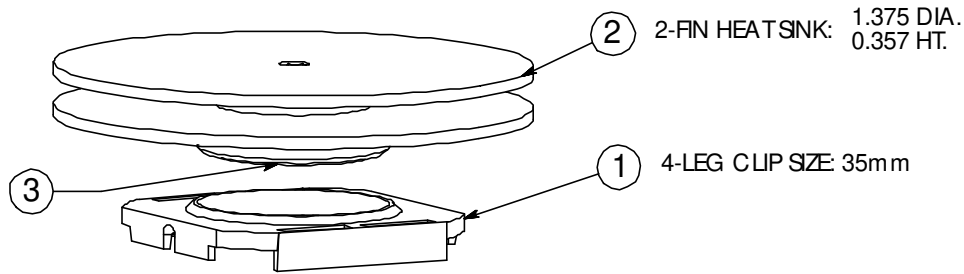


REVISION(S)			
LTR	DESCRIPTION	INIT	APP'D
A	ECR-06-005424	E.T 3/6/06	CW 3/7/06



Power	° C/W @ Ambient	° C/W @ 200 LFM	° C/W @ 400 LFM	° C/W @ 600 LFM
5 Watts	7.46	2.80	2.05	1.45
10 Watts	6.96	3.02	2.20	1.63
15 Watts	6.53	3.01	2.18	1.68

**CUSTOMER DRAWING**

SPECIFICATIONS ARE SUBJECT TO CHANGE WITHOUT NOTICE

ITEM	DESCRIPTION	QTY
1	MOUNTING CLIP	1
2	HEAT SINK	1
3	INTERFACE	1

**tyco** / Electronics      Attleboro Falls Massachusetts 02763

UNLESS OTHERWISE SPECIFIED TO LEFANGS ARE:

DRAWN BY:	E.TAO	DATE:	3/6/06
ENGINEER:	C.WANG	DATE:	3/7/06
FILENAME	PROJECT	SYSTEM	

MATERIAL: SEE NOTE

FINISH: SEE NOTE

CONFIDENTIAL PROPERTY OF TYCO ELECTRONICS. NOT TO BE DISCLOSED TO OTHERS. REPRODUCED OR USED FOR ANY PURPOSES EXCEPT AS AUTHORIZED IN WRITING BY AN AUTHORIZED OFFICIAL OF TYCO. MUST BE RETURNED TO TYCO ON DEMAND, ON COMPLETION OF ORDERS OR OTHER PURPOSES FOR WHICH LENT.

TITLE: 35mm HEATSINK ASSEMBLY (HTS688-P)

DIMENSIONS ARE IN: INCHES      SCALE: 1:1      PARTNO: 9-1542003-8      SHEET: 1 OF 1

THIRD ANGLE PROJECTION      DWG. NO. C-9-1542003-8      REV: A