

MALE FACE VIEW
4-POLE

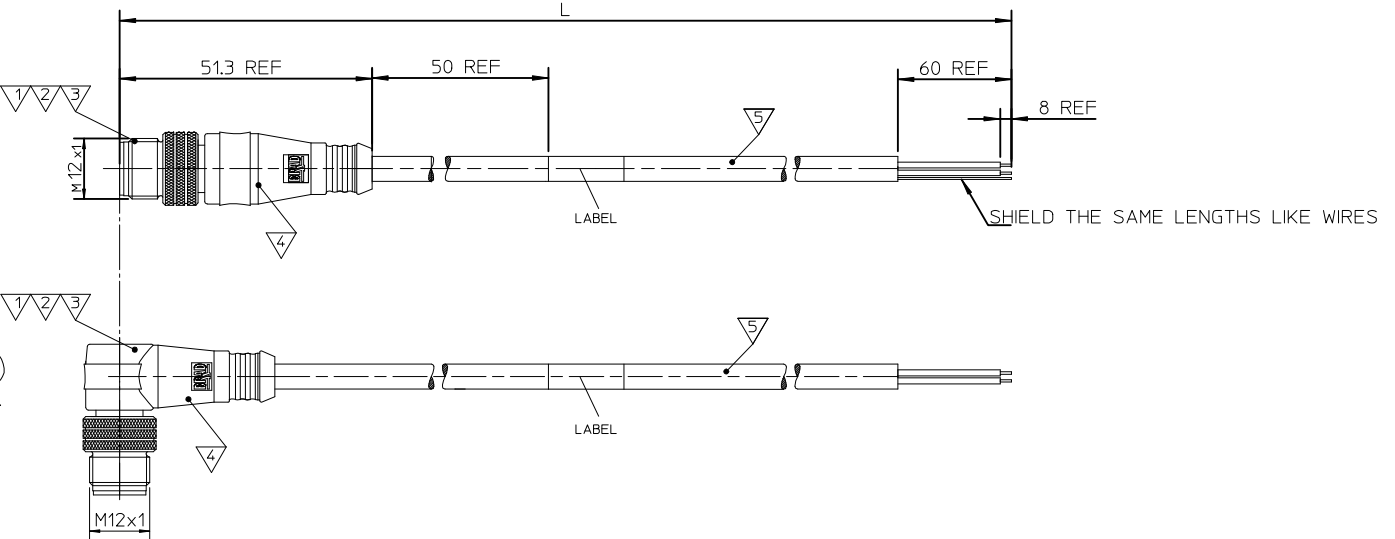
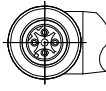
WIRING DIAGRAM

1 WHITE/ORANGE
2 WHITE/GREEN
3 ORANGE
4 GREEN

006



007



E 1 0 A X X X 1 5 X X X X X

Network Protocol E=Ethernet	First Connector 1=M12 Threaded 4 Pole D-code	second Connector 0=No connector	Wiring Scheme A=4 Pole	HEAD TYPE 006 Plugs male and single ended 007 Plugs male 90° and single ended	Cable type 26AWG 7/34 STRANDED TINNED COPPER PVC, TEAL	LENGTH UNIT C-cm M-m K-km F-feet	LENGTH Example: 020 - 2M 060 - 6M 100 - 10M	OPTIONS D- Decoupled (for Shielded version only)
--------------------------------	---	------------------------------------	---------------------------	---	---	--	---	---

Over	Up to and including	Tolerance (*)
0	305	+19
305	915	+45
915	1830	+56
1830	3660	+89
3660	7320	+165
7320	14640	+317
14640	30500	+610
30500	>	2 % of length

CONNECTOR SPECIFICATION:

VOLTAGE RATING	max 30V
AMPERAGE RATING	1.5 A
PROTECTION	IP67
OPERATING TEMPERATURE	-20°C TO 75°C

5	CABLE	1302100082	---
4	OVERMOULDING	TPU UF NATURAL C98A10	---
4	OVERMOULDING	MASTERBATCH COLORANT	---
3	COUPLING NUT	SEE SPECIAL TYPES	---
2	PIN CONTACT	COPPER ALLOY	GOLD OR NICKEL PLATED
1	INSERT	PUR	BLACK
ITEM	PART	MATERIAL	FINISH

DRAWING UPDATED
EC NO: IPG2013-1486
DRW:MDYSZEWSKA 2013/03/26
CHKD:
APPR:MIWASIECZKO 2013/05/09

QUALITY SYMBOLS
▽=0
∇=0


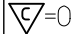

GENERAL TOLERANCES (UNLESS SPECIFIED)	
	mm
4 PLACES	± ---
3 PLACES	± ---
2 PLACES	± ---
1 PLACE	± ---
0 PLACE	± ---
ANGULAR ± --- °	
DRAFT WHERE APPLICABLE MUST REMAIN WITHIN DIMENSIONS	

DIMENSION STYLE MM ONLY	
DRAWN BY	DATE
MDYSZEWSKA	2012/11/24
CHECKED BY	DATE
HWALCZAK	2012/11/24
APPROVED BY	DATE
MIWASIECZKO	2013/01/21
MATERIAL NO.	
SEE PAGE 2	
SIZE	A3

SCALE	---
DESIGN UNITS	METRIC
FIRST ANGLE PROJECTION	
TITLE CSE ETH 4P DC MA PVC SE SHLD NI	
molex	
MATERIAL NO.	DOCUMENT NO.
SEE PAGE 2	SD-130048-007
SHEET NO. 1 OF 2	
THIS DRAWING CONTAINS INFORMATION THAT IS PROPRIETARY TO MOLEX INCORPORATED AND SHOULD NOT BE USED WITHOUT WRITTEN PERMISSION	

SEE CHART 1

1201080140	E10A00615M030
1300480053	E10A00615M006
1300480054	E10A00615M010
1300480055	E10A00615M020
1300480056	E10A00615M050
1300480057	E10A00615M100
1300480058	E10A00615M150
1300480059	E10A00615M300
1300480289	E10A00615M500
1300488006	E10A00615M200
1300480077	E10A00715M006
1300480078	E10A00715M010
1300480079	E10A00715M020
1300480080	E10A00715M050
1300480081	E10A00715M100
1300480290	E10A00715M200

ORIGINAL RELEASE EC NO: IPG2013-0932 DRWN:MDYSZEWSKA 2012/11/24 CHKD:HWALCZAK 2012/11/24 APPR:MIWASIECZKO 2013/01/21	QUALITY SYMBOLS	GENERAL TOLERANCES (UNLESS SPECIFIED)		DIMENSION STYLE MM ONLY		SCALE ---	DESIGN UNITS METRIC	FIRST ANGLE PROJECTION		
	 =0  =0	4 PLACES	± ---	± ---	DRAWN BY	DATE	TITLE CSE ETH 4P DC MA PVC SE SHLD NI			
		3 PLACES	± ---	± ---	MDYSZEWSKA	2012/11/24				
		2 PLACES	± ---	± ---	CHECKED BY	DATE				
		1 PLACE	± ---	± ---	HWALCZAK	2012/11/24				
0 PLACE	± ---	± ---	APPROVED BY	DATE	MATERIAL NO.		DOCUMENT NO.		SHEET NO.	
	ANGULAR ± --- °	DRAFT WHERE APPLICABLE MUST REMAIN WITHIN DIMENSIONS		SEE CHART 1		SD-130048-007		2 OF 2		
				SIZE A3		THIS DRAWING CONTAINS INFORMATION THAT IS PROPRIETARY TO MOLEX INCORPORATED AND SHOULD NOT BE USED WITHOUT WRITTEN PERMISSION				