

# DIN 43589-1

Euro Battery Connector / Euro-Batteriestecker  
Connectors for Industrial Vehicles / Stecker Für Industriefahrzeuge

- 80 Amps - 160 Amps - 320 Amps • Meets or Exceeds EN1175-1 • RoHS Compliant
- Acid & Impact Resistant • Industrial Applications
- 80 A - 160 A - 320 A • Erfüllt oder übertrifft EN1175-1 • RoHS-konform
- Säure-und schlagfest • Industrieanwendungen



**APP**  
Anderson Power Products®

An **IDEAL** Company

# Euro Battery Connector

The Anderson™ family of Euro Battery Connectors (EBC) are expertly designed for ease of use and incorporate an innovative contact carrier to simplify assembly. The EBC connectors include the industry standard 80, 160, and 320 sizes, all in accordance with DIN 43589-1. Design and materials offer performance that meets or exceeds all the requirements of EN1175-1. All Materials chosen are RoHS compliant and selected to ensure years of reliability in adverse industrial environments. These attributes make the EBC DIN connectors the ideal choice for a wide range of industrial applications in Material Handling, Battery Charging, Utility Vehicles, Motive Power, and Sweepers/ Scrubbers amongst many others.



## Key Attributes

**Safety Agency Approvals** - UL, CSA, and EN1175-1:1998 (Abr. EN1175-1)



**Meets DIN 43589-1**- Offers interface compatibility for housings, contacts and air tubes.

**Voltage Keying** - EBC connectors offer keys for Dry-Cell, Wet-Cell, and Universal applications coded for 24/36/48/72/80 and 96 volts DC applications.

**Sturdy Advanced Polymer Housings** - Provide superior resistance to impact, acid and temperature extremes.

**Silver Plated Copper Contacts** - Provide excellent conductivity and superior mating cycle performance.

© 2019 Anderson Power Products, Inc. All rights reserved. APP®, Anderson Power Products®, SB®, SBE®, SBX®, SBS® and the APP Logo are registered trademarks of Anderson Power Products, Inc. Anderson™ is a trademark of Anderson Power Products, Inc.

Anderson will use reasonable efforts to include accurate and up-to-date content in the catalog. All product information contained in the catalog including ordering information, illustrations, specifications, and dimensions, are believed to be reliable as of the date of publishing, but is subject to change without notice. Anderson makes no warranty or representation as to its accuracy. Content in the catalog may contain technical inaccuracies, typographical errors and may be changed or updated without notice. Anderson may also make improvements and/or changes to the products and/or to the programs described in the content at any time without notice. Current sales drawings and specifications are available upon request.

Neither Anderson nor any party involved in creating, producing, or delivering this catalog shall be liable for any direct, incidental, consequential, indirect, or punitive damages arising out of your use of this catalog or any errors or omissions in its content.

## Specifications

### Electrical

#### Current Ratings (Amperes)

| Wire Size:         | EBC 80  |       |       | EBC 160 |       |       | EBC 320 |       |       |
|--------------------|---------|-------|-------|---------|-------|-------|---------|-------|-------|
|                    | EN1175* | CSA** | UL*** | EN1175* | CSA** | UL*** | EN1175* | CSA** | UL*** |
| 10 mm <sup>2</sup> | 95      | 70    | 90    | N/A     | N/A   | N/A   | N/A     | N/A   | N/A   |
| 16 mm <sup>2</sup> | 125     | 90    | 120   | 115     | 90    | 120   | N/A     | N/A   | N/A   |
| 25 mm <sup>2</sup> | 145     | 110   | 140   | 160     | 120   | 160   | N/A     | N/A   | N/A   |
| 35 mm <sup>2</sup> | 165     | 120   | 160   | 185     | 140   | 180   | N/A     | N/A   | N/A   |
| 50 mm <sup>2</sup> | N/A     | N/A   | N/A   | 225     | 160   | 220   | 225     | 165   | 220   |
| 75 mm <sup>2</sup> | N/A     | N/A   | N/A   | N/A     | N/A   | N/A   | 260     | 200   | 260   |
| 95 mm <sup>2</sup> | N/A     | N/A   | N/A   | N/A     | N/A   | N/A   | 350     | 260   | 340   |

\* EN1175:1998 allows for maximum temperature rise = 65°C (above 20±5°C ambient)

\*\* CSA allows for maximum temperature rise = 30°C

\*\*\* UL allows for total temperature (based on min. 25°C ambient) = 75°C

#### Voltage Ratings

|          | EBC 80 |      |      | EBC 160 |      |      | EBC 320 |      |      |
|----------|--------|------|------|---------|------|------|---------|------|------|
|          | EN1175 | CSA  | UL   | EN1175  | CSA  | UL   | EN1175  | CSA  | UL   |
| AC / DC  | 150V   | 600V | 600V | 150V    | 600V | 600V | 150V    | 600V | 600V |
| DWV (AC) | 2000   | 2200 | 2000 | 2200    | 2000 | 2200 | 2000    | 2200 |      |

#### Wire Range

|                         | EBC 80          |     | EBC 160         |     | EBC 320         |     |
|-------------------------|-----------------|-----|-----------------|-----|-----------------|-----|
|                         | mm <sup>2</sup> | AWG | mm <sup>2</sup> | AWG | mm <sup>2</sup> | AWG |
| Power - Min.            | 10              | #8  | 16              | #6  | 50              | 1/0 |
| Power - Max.            | 35              | #2  | 50              | 1/0 | 95              | 3/0 |
| Upper Aux. - Min.       | 1.5             | #18 | 4               | #12 | 4               | #12 |
| Upper Aux. - Max.       | 2.5             | #14 | 4               | #12 | 4               | #12 |
| Lower Pilot Aux. - Min. | 1.5             | #18 | 6               | #10 | 6               | #10 |
| Lower Pilot Aux. - Max. | 2.5             | #14 | 6               | #10 | 6               | #10 |

#### Average Initial Contact Resistance Across Mated Connector- micro-ohms

|                                 | EBC 80 | EBC 160 | EBC 320 |
|---------------------------------|--------|---------|---------|
| Avg. Contact Resistance - Power | 176    | 95      | 77      |
| Avg. Contact Resistance - Aux.  | 1100   | 920     | 1000    |

Operating Temperature (all Series): -25 to 75°C

### Mechanical

#### Life Cycle - Per EN1175-1

|                              | EBC 80    | EBC 160   | EBC 320   |
|------------------------------|-----------|-----------|-----------|
| No Load                      | >5000     | >5000     | >5000     |
| Under Load (Hot Plug at 96V) | 5 at 200A | 5 at 400A | 5 at 800A |

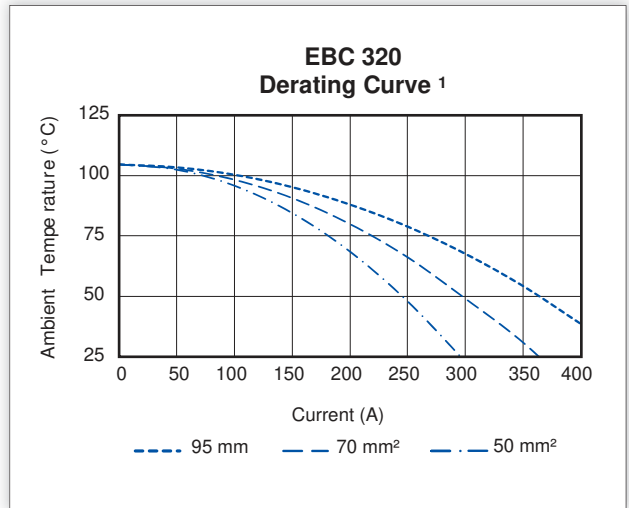
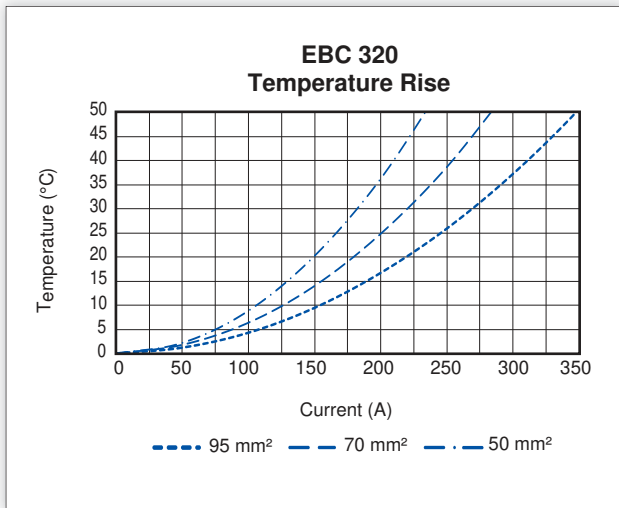
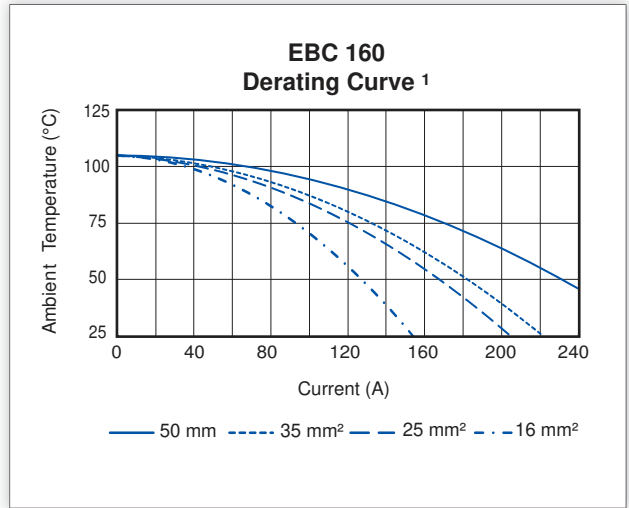
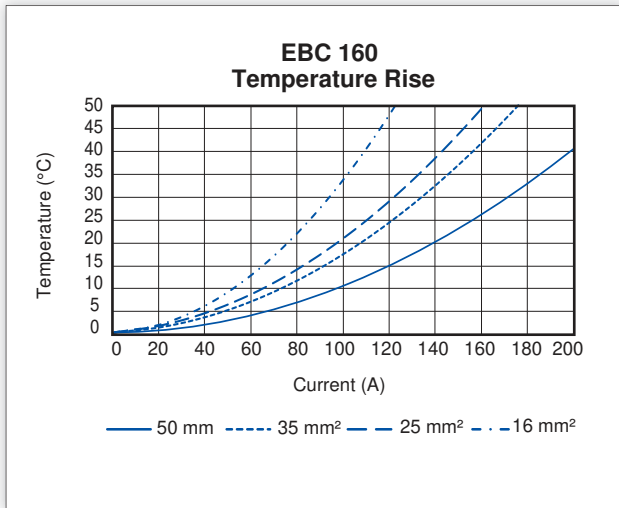
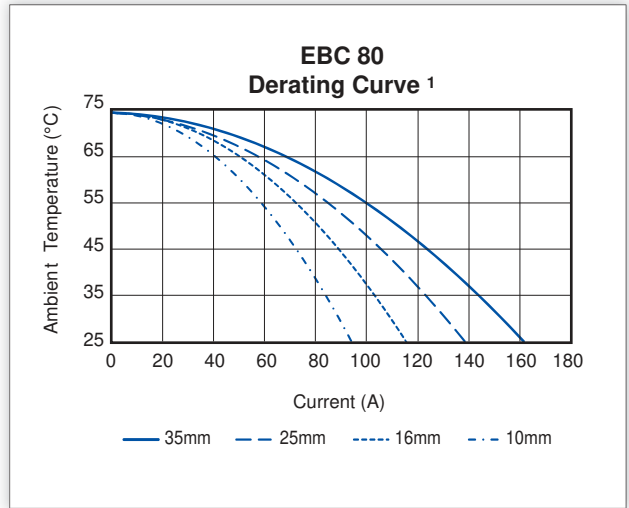
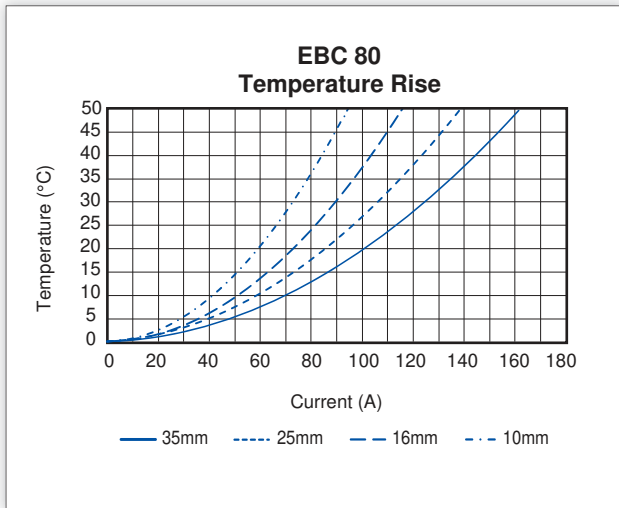
#### Misc. Data

|   | EBC 80      | EBC 160      | EBC 320      |
|---|-------------|--------------|--------------|
| Avg. Mating Force N (lb)                        | 68 (15.3)   | 170 (38.2)   | 71 (16.0)    |
| Contact Retention N (lb)                        | 134(30) min | 445(100) min | 445(100) min |
| Degree of Protection                            | IP23        | IP23         | IP23         |
| Acid Resistance (1.40g/cm <sup>3</sup> at 20°C) | 16 hours    | 16 hours     | 16 hours     |
| Air Tube Max Pressure Bar (PSI)                 | 0.8 (11.6)  | 0.8 (11.6)   | 0.8 (11.6)   |

### Materials

|                                    | EBC 80 - EBC 160 - EBC 320 |
|------------------------------------|----------------------------|
| Housings                           | PBT/PC Blend               |
| Contacts                           | Copper Alloy               |
| Contact Plating - Power (min.)     | Silver Plating - 6 microns |
| Contact Plating - Auxiliary (min.) | Silver Plating - 6 microns |
| Hardware                           | Steel, Zn Chromate         |

# Temperature Charts

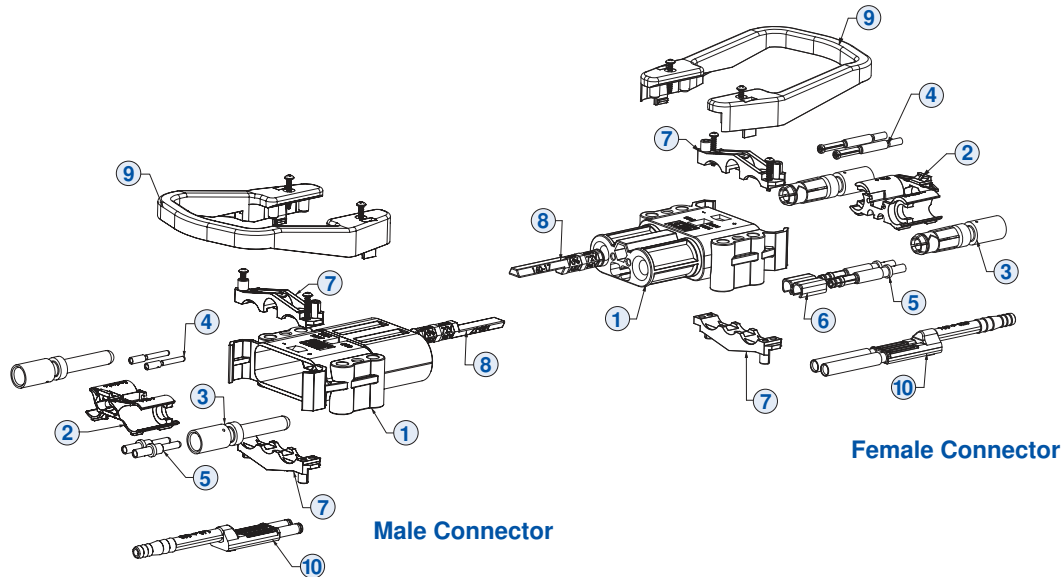


<sup>1</sup> 0.8 Derating per IEC 60512-3

NOTE 1: Temperature ratings based on power contacts energized only.

NOTE 2: Temperature rise charts are based on a 25°C ambient temperature.

# Ordering Information



| Components  |   |             |             |             |             |             |             |
|-------------|---|-------------|-------------|-------------|-------------|-------------|-------------|
| Item Number | Description - mm (AWG)  | EBC 80      |             | EBC 160     |             | EBC 320     |             |
|             |   | Male        | Female      | Male        | Female      | Male        | Female      |
| 3           | <b>Power Contacts</b>   |             |             |             |             |             |             |
|             | Power Contact 10 mm <sup>2</sup> (8 AWG)  | 80-1010     | 80-1110     | N/A         | N/A         | N/A         | N/A         |
|             | Power Contact 16 mm <sup>2</sup> (6 AWG)  | 80-1016     | 80-1116     | 160-1016    | 160-1116    | N/A         | N/A         |
|             | Power Contact 25 mm <sup>2</sup> (4 AWG)  | 80-1025     | 80-1125     | 160-1025    | 160-1125    | N/A         | N/A         |
|             | Power Contact 35 mm <sup>2</sup> (2 AWG)  | 80-1035     | 80-1135     | 160-1035    | 160-1135    | N/A         | N/A         |
|             | Power Contact 50 mm <sup>2</sup> (1 AWG to 1/0)   | N/A         | N/A         | 160-1050    | 160-1150    | 320-1050    | 320-1150    |
|             | Power Contact 70 mm <sup>2</sup> (2/0 to 3/0)   | N/A         | N/A         | N/A         | N/A         | 320-1070    | 320-1170    |
|             | Power Contact 95 mm <sup>2</sup> (3/0 to 4/0)   | N/A         | N/A         | N/A         | N/A         | 320-1095    | 320-1195    |
| 4           | Upper Auxiliary Contact   | E80-32      | E80-33      | E160-32     | E160-33     | E320-34     | E320-35     |
| 5           | * Lower Pilot Auxiliary Contact   | E80-30      | E80-31      | 160-12      | 160-13      | 160-12      | 160-13      |
| 8           | <b>Voltage Coding Pins</b>  |             |             |             |             |             |             |
|             | Grey Coding Pin - wet (160 and 320 use same Coding Pins)  | 80-9        | 80-9        | 160-9       | 160-9       | 160-9       | 160-9       |
|             | Green Coding Pin - dry (160 and 320 use same Coding Pins)   | 80-17       | 80-17       | 160-17      | 160-17      | 160-17      | 160-17      |
|             | ** Yellow Coding Pin - univ (160 and 320 use same Coding Pins)  | 80-19       | Not Used    | 160-19      | Not Used    | 160-19      | Not Used    |
| 9           | *** Handle - High Profile w/screws  | N/A         | N/A         | E320-89     | E320-89     | E320-89     | E320-89     |
|             | *** Handle - Low Profile w/screws   | E80-89      | E80-89      | E160-89     | E160-89     | E160-89     | E160-89     |
|             | Handle Red - Low profile w/screws   | 80-8-R      | 80-8-R      | N/A         | N/A         | N/A         | N/A         |
| 10          | * Air Tube  | E80-20      | E80-21      | E160-20     | E160-21     | E320-20     | E320-21     |
| 1           | Housing Only  | EP80-1      | EP80-2      | EP160-1     | EP160-2     | EP320-1     | EP320-2     |
| 2           | Contact Holder  | 80-5B       | 80-5B       | EP160-5     | EP160-5     | EP320-5     | EP320-5     |
| 6           | Supplemental Lower Pilot Aux Holder   | Not Used    | Not Used    | Not Used    | EP320-38    | Not Used    | EP320-38    |
| 7           | Cable Clamps with Screws  | EP80-67     | EP80-67     | EP160-67    | EP160-67    | EP320-67    | EP320-67    |
| 1+2+7+ 8    | Male Housing with Contact Holder and Cable Clamp with Screws (Gray Key) - Individual Pack                                 | E80400-0009 |             | E16400-0009 |             | E32400-0009 |             |
| 1+2+6+7+8   | Female Housing with Contact Holder, **** Lower Pilot aux Holder, Cable Clamps with Screws - (Gray Key) - Individual Pack  |             | E80500-0009 |             | E16500-0009 |             | E32500-0009 |
| 1+2+7+ 8    | Male Housing with Contact Holder and Cable Clamp with Screws (Green Key) - Individual Pack                                | E80400-0209 |             | E16400-0209 |             | E32400-0209 |             |
| 1+2+6+7+8   | Female Housing with Contact Holder, **** Lower Pilot aux Holder, Cable Clamps with Screws - (Green Key) - Individual Pack |             | E80500-0209 |             | E16500-0209 |             | E32500-0209 |
| 1+2+7+ 8    | Male Housing with Contact Holder and Cable Clamp with Screws (Yellow Key) - Individual Pack                               | E80400-0309 |             | E16403-0309 |             | E32400-0309 |             |

\* Lower pilot auxiliary contacts use the same housing location as air tubes so they can not be used together

\*\* Universal yellow coding key is only used on male connectors

\*\*\* EBC 160 and EBC 320 handles work with both the EBC 160 and EBC 320 series connectors

\*\*\*\* No lower pilot auxiliary holder required on EBC 80 size connectors

# Part Number Configurator

## EBC 80 Connector Part Number Selection

| Series | Gender                      | Main Contact | Handle | Coding Key                                     | Auxiliary Contacts & Air Tubes            | Packing   |  |
|--------|-----------------------------|--------------|--------|--|---|---|--|
| E80    | 4 or 5                      | 25           | - 1    | 0  | 2   | 9   |  |
| 4      | Male                        |              |        |  |   | 9 Individual  |  |
| 5      | Female                      |              |        |  |   | 8 Bulk  |  |
| 00     | None - Order Separately     |              |        |  |   | 0 None  |  |
| 10     | 10 mm <sup>2</sup> (#8 AWG) |              |        |  |   | 1 (2) Lower Pilot Auxiliary Contacts                                |  |
| 16     | 16 mm <sup>2</sup> (#6 AWG) |              |        |  |   | 2 (2) Upper Auxiliary Contacts                                      |  |
| 25     | 25 mm <sup>2</sup> (#4 AWG) |              |        |  |   | 4 (2) Lower Pilot Auxiliary Contacts & (2) Upper Auxiliary Contacts |  |
| 35     | 35 mm <sup>2</sup> (#2 AWG) |              |        |  |   | 5 Air Tube  |  |
| 0      | No                          |              | 0      | Grey, Wet Cell                                 | 6 Air Tube & (2) Upper Auxiliary Contacts |   |  |
| 1      | Black                       |              | 2      | Green, Dry Cell                                |   |   |  |
| 2      | Red                         |              | 3      | Yellow, Universal (use with male housing only) |   |   |  |



## EBC 160 Connector Part Number Selection

| Series | Gender                                 | Main Contact | Handle | Coding Key                                     | Auxiliary Contacts & Air Tubes            | Packing   |  |
|--------|--|--------------|--------|--|---|---|--|
| E16    | 4 or 5                                 | 25           | - 1    | 0  | 2   | 9   |  |
| 4      | Male                                   |              |        |  |   | 9 Individual  |  |
| 5      | Female                                 |              |        |  |   | 8 Bulk  |  |
| 00     | None - Order Separately                |              |        |  |   | 0 None  |  |
| 16     | 16 mm <sup>2</sup> (#6 AWG)            |              |        |  |   | 1 (2) Lower Pilot Auxiliary Contacts                                |  |
| 25     | 25 mm <sup>2</sup> (#4 AWG)            |              |        |  |   | 2 (2) Upper Auxiliary Contacts                                      |  |
| 35     | 35 mm <sup>2</sup> (#2 AWG)            |              |        |  |   | 4 (2) Lower Pilot Auxiliary Contacts & (2) Upper Auxiliary Contacts |  |
| 50     | 50 mm <sup>2</sup> (1/0 AWG to #1 AWG) |              |        |  |   | 5 Air Tube  |  |
| 0      | No                                     |              | 0      | Grey, Wet Cell                                 | 6 Air Tube & (2) Upper Auxiliary Contacts |   |  |
| 1      | Black                                  |              | 2      | Green, Dry Cell                                |   |   |  |
|        |  |              | 3      | Yellow, Universal (use with male housing only) |   |   |  |



## EBC 320 Connector Part Number Selection

| Series | Gender                                  | Main Contact | Handle | Coding Key                                     | Auxiliary Contacts & Air Tubes            | Packing   |  |
|--------|---|--------------|--------|--|---|---|--|
| E32    | 4 or 5                                  | 50           | - 1    | 0  | 2   | 9   |  |
| 4      | Male                                    |              |        |  |   | 9 Individual  |  |
| 5      | Female                                  |              |        |  |   | 8 Bulk  |  |
| 00     | None - Order Separately                 |              |        |  |   | 0 None  |  |
| 50     | 50 mm <sup>2</sup> (1/0 AWG to #1 AWG)  |              |        |  |   | 1 (2) Lower Pilot Auxiliary Contacts                                |  |
| 70     | 70 mm <sup>2</sup> (2/0 AWG to 3/0 AWG) |              |        |  |   | 2 (2) Upper Auxiliary Contacts                                      |  |
| 95     | 95 mm <sup>2</sup> (3/0 AWG to 4/0 AWG) |              |        |  |   | 4 (2) Lower Pilot Auxiliary Contacts & (2) Upper Auxiliary Contacts |  |
| 0      | No                                      |              |        |  | 5 Air Tube                                |   |  |
| 1      | Black                                   |              | 0      | Grey, Wet Cell                                 | 6 Air Tube & (2) Upper Auxiliary Contacts |   |  |
|        |   |              | 2      | Green, Dry Cell                                |   |   |  |
|        |   |              | 3      | Yellow, Universal (use with male housing only) |   |   |  |



### Packaging:

Individual (Kits) - all components for a complete connector are packaged together in individual bags within one box

Bulk (Kits) - all components required are packaged separately by part number selected in one bag/box

### Handles:

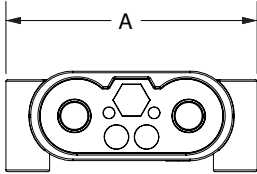
EBC 80 comes with the low profile T handle • EBC 160 come with the low profile handle • EBC 320 come with the high profile handle.

# Drawings

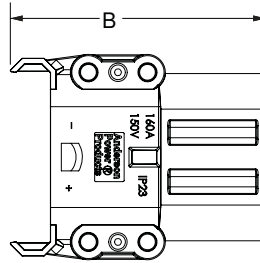


| Housing Dimensions |   |        |      |         |      |         |      |
|--------------------|---|--------|------|---------|------|---------|------|
|                    |   | EBC 80 |      | EBC 160 |      | EBC 320 |      |
|                    |   | mm     | in   | mm      | in   | mm      | in   |
| Male Housings      | A | 68.0   | 2.68 | 83.5    | 3.29 | 89.5    | 3.52 |
|                    | B | 74.4   | 2.93 | 103.8   | 4.09 | 123.5   | 4.86 |
|                    | C | 26.1   | 1.03 | 33.4    | 1.31 | 40.8    | 1.61 |
| Female Housings    | A | 68.0   | 2.68 | 83.5    | 3.29 | 89.5    | 3.52 |
|                    | B | 73.8   | 2.91 | 104.0   | 4.09 | 117.0   | 4.61 |
|                    | C | 26.1   | 1.03 | 32.6    | 1.28 | 37.6    | 1.48 |

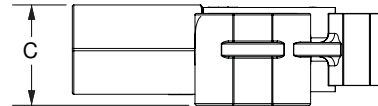
**Male Front View**



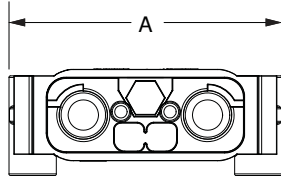
**Male Top View**



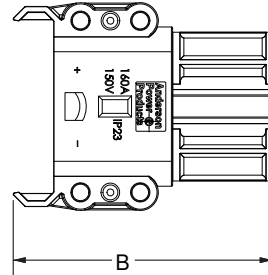
**Male Side View**



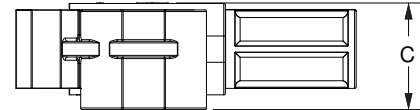
**Female Front View**



**Female Top View**



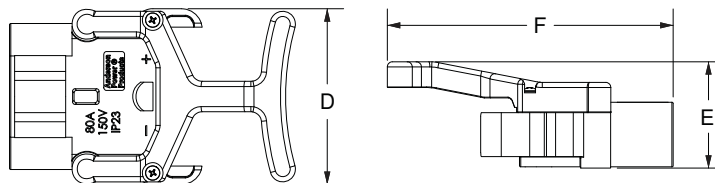
**Female Side View**



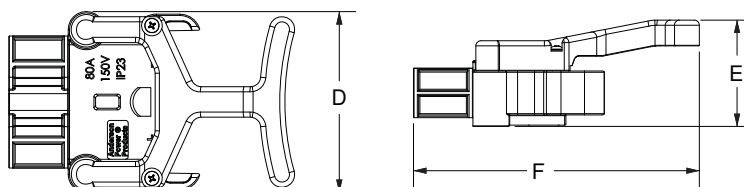
## Dimensions of Housings With Handles

|                 |   | EBC 80 |      |
|-----------------|---|--------|------|
|                 |   | mm     | in   |
| Male Housings   | D | 68.0   | 2.68 |
|                 | E | 41.2   | 1.62 |
|                 | F | 110.6  | 4.35 |
| Female Housings | D | 70.0   | 2.76 |
|                 | E | 41.2   | 1.62 |
|                 | F | 110.6  | 4.35 |

**EBC 80 Male Housing with Handle**

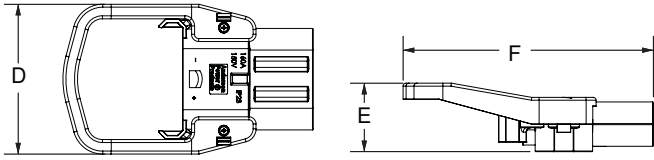


**EBC 80 Female Housing with Handle**

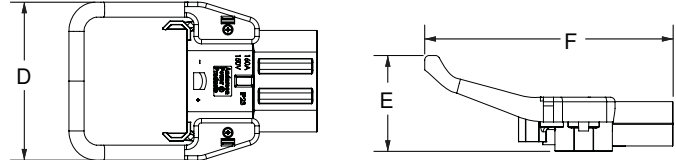


| EBC 160 Handles |   |             |     |              |     |                 |   |             |     |              |     |
|-----------------|---|-------------|-----|--------------|-----|-----------------|---|-------------|-----|--------------|-----|
|                 |   | Low Profile |     | High Profile |     |                 |   | Low Profile |     | High Profile |     |
|                 |   | mm          | in  | mm           | in  |                 |   | mm          | in  | mm           | in  |
| Male Housings   | D | 101         | 4.0 | 106          | 4.2 | Female Housings | D | 101         | 4.0 | 106          | 4.2 |
|                 | E | 46          | 1.8 | 64           | 2.5 |                 | E | 46          | 1.8 | 64           | 2.5 |
|                 | F | 168         | 6.6 | 167          | 6.6 |                 | F | 173         | 6.8 | 172          | 6.8 |

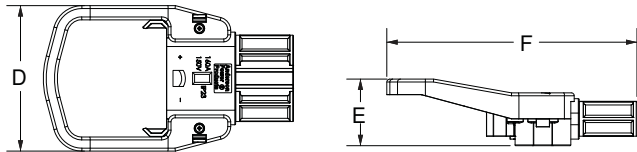
**Male Housing  
Low Profile Handle**



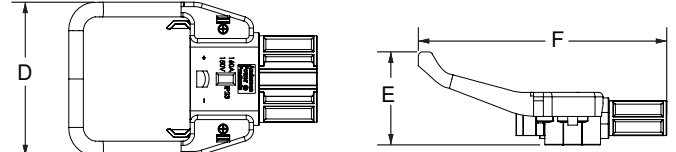
**Male Housing  
High Profile Handle**



**Female Housing  
Low Profile Handle**

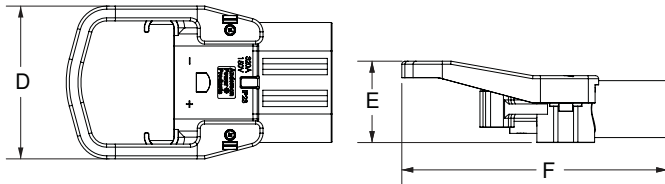


**Female Housing  
High Profile Handle**

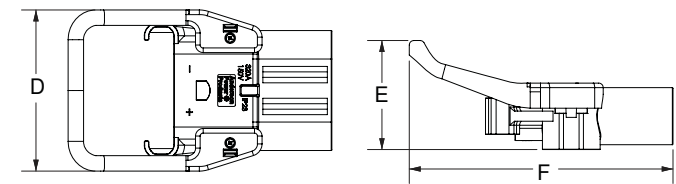


| EBC 320 Handles |   |             |     |              |     |                 |   |             |     |              |     |
|-----------------|---|-------------|-----|--------------|-----|-----------------|---|-------------|-----|--------------|-----|
|                 |   | Low Profile |     | High Profile |     |                 |   | Low Profile |     | High Profile |     |
|                 |   | mm          | in  | mm           | in  |                 |   | mm          | in  | mm           | in  |
| Male Housings   | D | 101         | 4.0 | 106          | 4.2 | Female Housings | D | 101         | 4.0 | 106          | 4.2 |
|                 | E | 54          | 2.1 | 72           | 2.8 |                 | E | 53          | 2.1 | 71           | 2.8 |
|                 | F | 175         | 6.9 | 174          | 6.9 |                 | F | 71          | 2.8 | 173          | 6.8 |

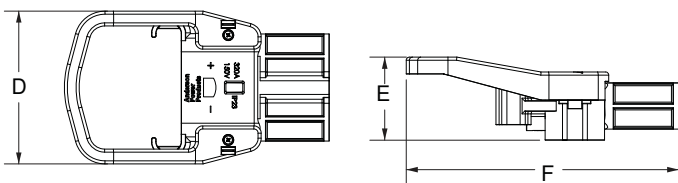
**Male Housing  
Low Profile Handle**



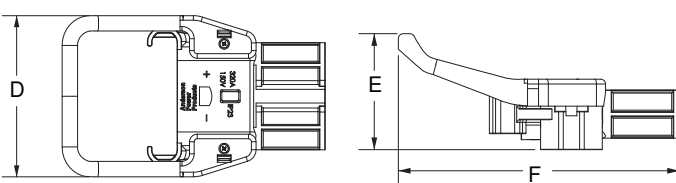
**Male Housing  
High Profile Handle**



**Female Housing  
Low Profile Handle**

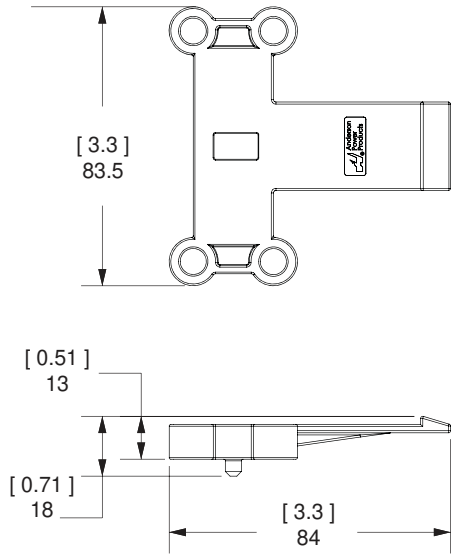


**Female Housing  
High Profile Handle**

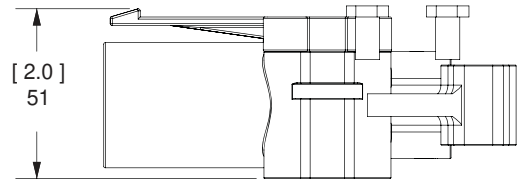




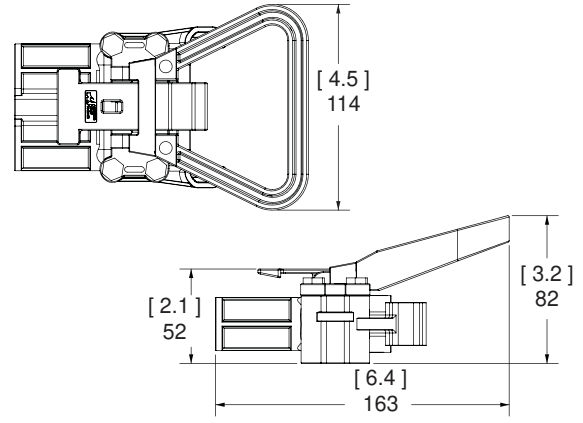
**Latch Plate 160 & 320**  
**P/N: A320-LP**



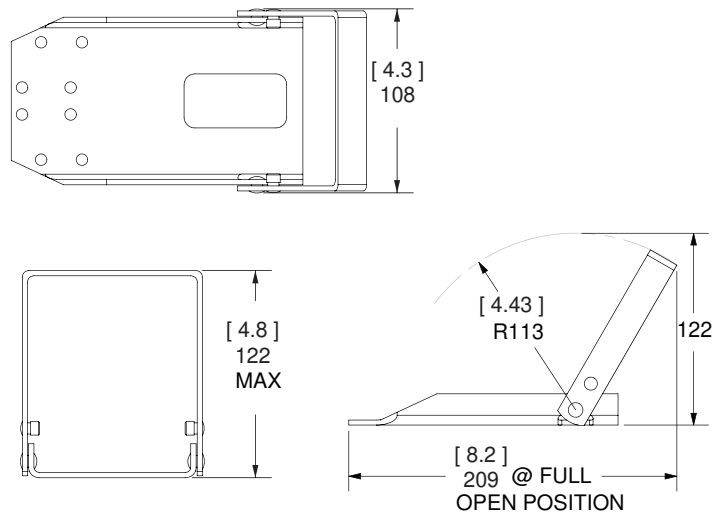
**Latch Plate on**  
**EBC 160 & 320 Male Housing**



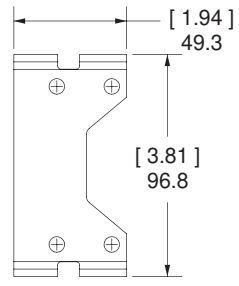
**Handle & Lever Assembly**  
**on EBC 160 & 320 Female Housing:**  
**P/N: A320HL**



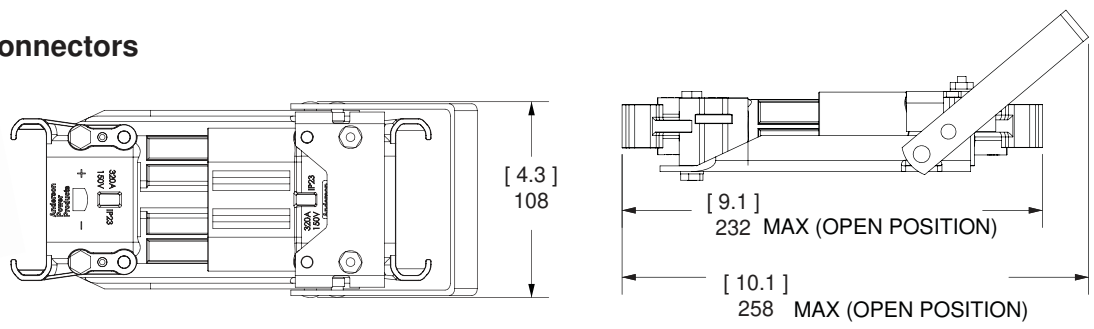
**Manual Release for EBC 160 & 320**  
**P/N: 994G4**



**Battery Bracket - P/N: 993G4**



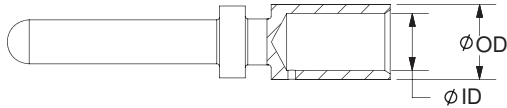
**Manual Release with Connectors**



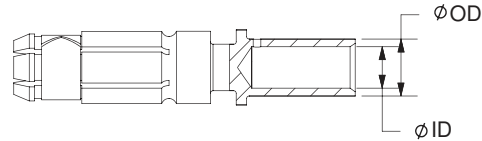
| Contacts      |                    |            |      |      |      |      |
|---------------|--------------------|------------|------|------|------|------|
| Series        | Wire Size          |            | OD   |      | ID   |      |
|               | Metric             | AWG        | mm   | in   | mm   | in   |
| EBC 80        | 10 mm <sup>2</sup> | #6 to 8    | 6.0  | 0.24 | 4.5  | 0.18 |
| EBC 80 / 160  | 16 mm <sup>2</sup> | #4 to 6    | 8.4  | 0.33 | 6.0  | 0.24 |
|               | 25 mm <sup>2</sup> | #2 to 4    | 11.0 | 0.43 | 8.0  | 0.31 |
|               | 35 mm <sup>2</sup> | #1 to 2    | 12.5 | 0.49 | 9.0  | 0.35 |
| EBC 160 / 320 | 50 mm <sup>2</sup> | #1 to 1/0  | 14.5 | 0.57 | 11.0 | 0.43 |
| EBC 320       | 70 mm <sup>2</sup> | 2/0 to 3/0 | 17.0 | 0.67 | 13.0 | 0.51 |
|               | 95 mm <sup>2</sup> | 3/0 to 4/0 | 19.8 | 0.78 | 15.0 | 0.59 |



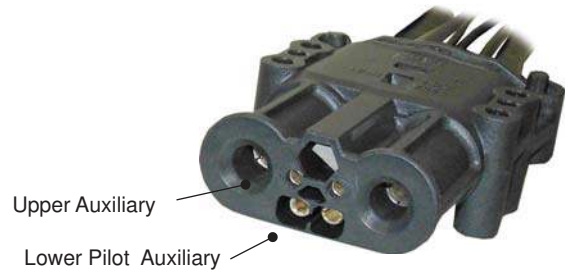
### Male Power Contact



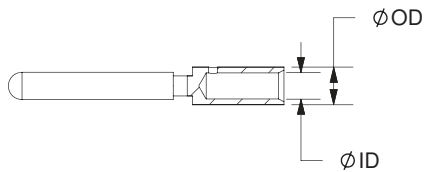
### Female Power Contact



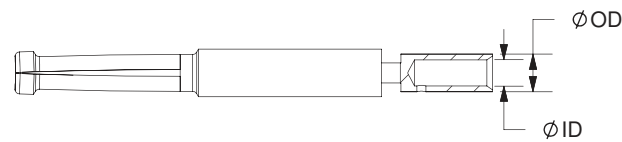
| Upper Auxiliaries |                 |            |     |      |     |      | Lower Pilot Auxiliaries |        |     |      |     |      |
|-------------------|-----------------|------------|-----|------|-----|------|-------------------------|--------|-----|------|-----|------|
| Series            | Wire Size       |            | OD  |      | ID  |      | Wire Size               |        | OD  |      | ID  |      |
|                   | mm <sup>2</sup> | AWG        | mm  | in   | mm  | in   | mm <sup>2</sup>         | AWG    | mm  | in   | mm  | in   |
| EBC 80            | 2.5             | #14 to #18 | 3.9 | 0.15 | 2.2 | 0.09 | 2.5                     | #14-18 | 3.9 | 0.15 | 2.2 | 0.09 |
| EBC 160 / 320     | 4               | #12        | 4.1 | 0.16 | 2.9 | 0.11 | 6.0                     | #10    | 5.0 | 0.20 | 3.9 | 0.15 |



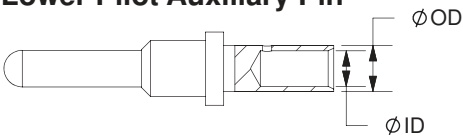
### Upper Auxiliary Pin



### Upper Auxiliary Socket



### Lower Pilot Auxiliary Pin

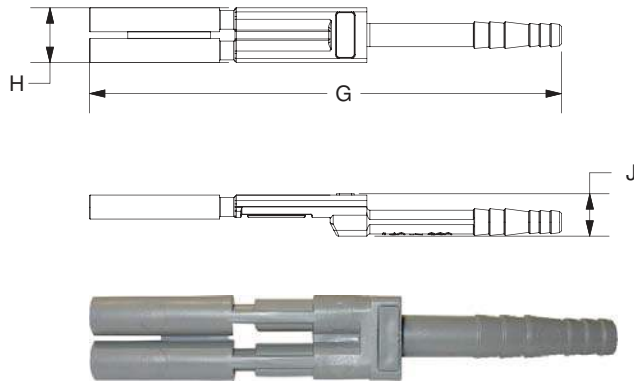


### Lower Pilot Auxiliary Socket

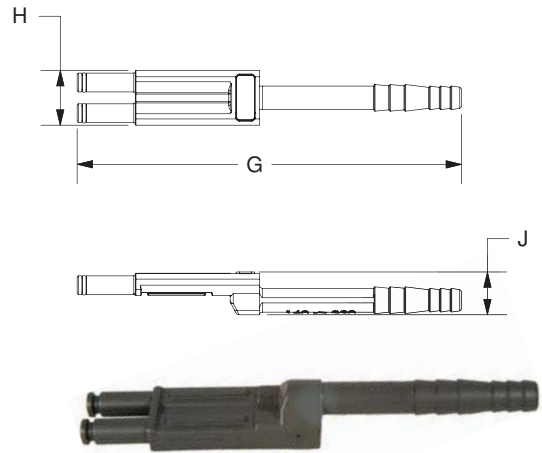


| Female Twin Air Tube |     |     |      |      |      |      | Male Twin Air Tube |     |      |      |      |      |
|----------------------|-----|-----|------|------|------|------|--------------------|-----|------|------|------|------|
| Series               | G   |     | H    |      | J    |      | G                  |     | H    |      | J    |      |
|                      | mm  | in  | mm   | in   | mm   | in   | mm                 | in  | mm   | in   | mm   | in   |
| EBC 80               | 102 | 4.0 | 15.8 | 0.62 | 13.0 | 0.51 | 87                 | 3.4 | 15.8 | 0.62 | 13.0 | 0.51 |
| EBC 160 / 320        | 154 | 6.1 | 17.8 | 0.70 | 13.9 | 0.55 | 125                | 4.9 | 17.8 | 0.70 | 14.0 | 0.55 |

### Female Air Tube

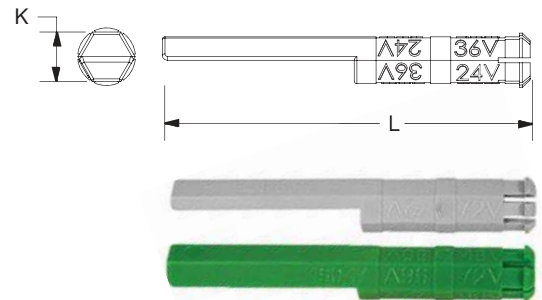


### Male Air Tube



| Wet / Dry Voltage Key |     |      |    |      | Universal Voltage Key |      |    |     |
|-----------------------|-----|------|----|------|-----------------------|------|----|-----|
| Series                | K   |      | L  |      | K                     |      | L  |     |
|                       | mm  | in   | mm | in   | mm                    | in   | mm | in  |
| EBC 80                | 8.0 | 0.31 | 45 | 1.77 | 8.0                   | 0.31 | 46 | 1.8 |
| EBC 160 / 320         | 9.3 | 0.37 | 69 | 2.72 | 11.8                  | 0.46 | 69 | 2.7 |

### Wet / Dry Voltage Key - Grey or Green

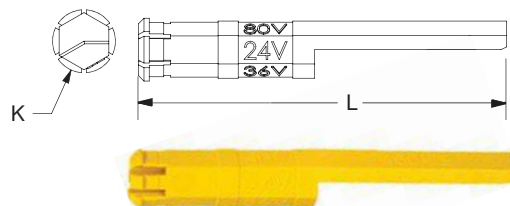


| Keying Plug | Identification                                     | Assembled In   |
|-------------|--|--|
|             | Used for Wet Cell Battery /Charger<br>- Color Grey | Battery Receptacle and Charging Plug                                     |
|             | Used for Dry Cell Battery/Charger<br>- Color Green | Battery Receptacle and Charging Plug                                     |
|             | Used for Vehicle only<br>- Yellow (Universal)      | Vehicle Plug only - used when vehicle may use wet or dry cell batteries. |

### Universal Voltage Key - Yellow

(use with male housing only)

Universal (Yellow) voltage keys are to be used exclusively at the vehicle side to permit both the use of wet-cell and dry-cell batteries.



# Tooling Information

## EBC 80A, 160A, & 320A (DIN) Pneumatic Tooling

| Wire Size                       |                    | Part Numbers                        |                      | Loose Piece Contact Crimp Tools |             |   |                        |                      |   |         |   |                               |
|---------------------------------|--------------------|-------------------------------------|----------------------|---------------------------------|-------------|---|------------------------|----------------------|---|---------|---|-------------------------------|
| mm <sup>2</sup>                 | AWG                | Power Contact                       | Pneumatic Bench Tool | +                               | Die         | + | Locator (Single Crimp) |                      |   |         |   |                               |
| 10 mm <sup>2</sup>              | #8 to #6           | 80-1010                             | TBD                  |                                 | TBD         |   | TBD                    |                      |   |         |   |                               |
|                                 |                    | 80-1110                             |                      |                                 |             |   |                        |                      |   |         |   |                               |
| 16 mm <sup>2</sup>              | #6 to #4           | 80-1016                             |                      |                                 |             |   |                        |                      |   |         |   |                               |
|                                 |                    | 80-1116                             |                      |                                 |             |   |                        |                      |   |         |   |                               |
| 25 mm <sup>2</sup>              | #4 to #2           | 80-1025                             |                      |                                 |             |   |                        |                      |   |         |   |                               |
|                                 |                    | 80-1125                             |                      |                                 |             |   |                        |                      |   |         |   |                               |
| 35 mm <sup>2</sup>              | #2 to #1           | 80-1035                             |                      |                                 |             |   |                        |                      |   |         |   |                               |
|                                 |                    | 80-1135                             |                      |                                 |             |   |                        |                      |   |         |   |                               |
| mm <sup>2</sup>                 | AWG                | Power Contact                       |                      |                                 |             |   |                        | Pneumatic Bench Tool | + | Die     | + | Locator (Double Crimp)        |
| 16 mm <sup>2</sup>              | #6 to #4           | 160-1016                            |                      |                                 |             |   |                        | 1387G2               |   | 1303G14 |   | 1304G21 Socket<br>1304G20 Pin |
|                                 |                    | 160-1116                            |                      |                                 |             |   |                        |                      |   |         |   |                               |
| 25 mm <sup>2</sup>              | #4 to #2           | 160-1025                            |                      |                                 |             |   |                        |                      |   |         |   |                               |
|                                 |                    | 160-1125                            |                      |                                 |             |   |                        |                      |   |         |   |                               |
| 35 mm <sup>2</sup>              | #2 to #1           | 160-1035                            |                      |                                 |             |   |                        |                      |   |         |   |                               |
|                                 |                    | 160-1135                            |                      |                                 |             |   |                        |                      |   |         |   |                               |
| 50 mm <sup>2</sup>              | #1 to 1/0          | 160-1050                            |                      |                                 |             |   |                        |                      |   |         |   |                               |
|                                 |                    | 160-1150                            |                      |                                 |             |   |                        |                      |   |         |   |                               |
| 50 mm <sup>2</sup>              | #1 to 1/0          | 320-1050                            | 1387G2               |                                 | 1303G8      |   | 1304G29 Pin            |                      |   |         |   |                               |
|                                 |                    | 320-1150                            |                      |                                 |             |   |                        |                      |   |         |   |                               |
| 70 mm <sup>2</sup>              | 2/0 AWG<br>3/0 AWG | 320-1070                            |                      |                                 |             |   |                        |                      |   |         |   |                               |
|                                 |                    | 320-1170                            |                      |                                 |             |   |                        |                      |   |         |   |                               |
| 95 mm <sup>2</sup>              | 3/0 AWG<br>4/0 AWG | 320-1095                            |                      |                                 |             |   |                        |                      |   |         |   |                               |
|                                 |                    | 320-1195                            |                      |                                 |             |   |                        |                      |   |         |   |                               |
| <b>Pilot/Auxiliary Contacts</b> |                    |                                     |                      |                                 |             |   |                        |                      |   |         |   |                               |
| ALL                             |                    | All Crimp Pins<br>All Crimp Sockets |                      |                                 | SOLDER ONLY |   |                        |                      |   |         |   |                               |



1387G1 & 1387G2



1370G1 & 1387G3

## EBC 80A, 160A, & 320A (DIN) Hydraulic Tooling

| Wire Size                       |                    | Part Numbers    |                        | Loose Piece Contact Crimp Tools |                        |        |                     |  |        |  |             |
|---------------------------------|--------------------|-----------------|------------------------|---------------------------------|------------------------|--------|---------------------|--|--------|--|-------------|
| mm <sup>2</sup>                 | AWG                | Power Contact   | Hydraulic Hand Tool    | +                               | Die                    | OR     | Hydraulic Hand Tool |  |        |  |             |
| 10 mm <sup>2</sup>              | #8 to #6           | 80-1010         | 1387G3<br>OR<br>1370G1 |                                 | 1322G16                |        | N/A                 |  |        |  |             |
|                                 |                    | 80-1110         |                        |                                 |                        |        |                     |  |        |  |             |
| 16 mm <sup>2</sup>              | #6 to #4           | 80-1016         |                        |                                 |                        |        |                     |  |        |  |             |
|                                 |                    | 80-1116         |                        |                                 |                        |        |                     |  |        |  |             |
| 25 mm <sup>2</sup>              | #4 to #2           | 80-1025         |                        |                                 |                        |        |                     |  |        |  |             |
|                                 |                    | 80-1125         |                        |                                 |                        |        |                     |  |        |  |             |
| 35 mm <sup>2</sup>              | #2 to #1           | 80-1035         |                        |                                 | N/A                    |        |                     |  | N/A    |  |             |
|                                 |                    | 80-1135         |                        |                                 |                        |        |                     |  |        |  |             |
| 16 mm <sup>2</sup>              | #6 to #4           | 160-1016        |                        |                                 | 1387G3<br>OR<br>1370G1 |        |                     |  | 1322G9 |  | 1368 Series |
|                                 |                    | 160-1116        |                        |                                 |                        |        |                     |  |        |  |             |
| 25 mm <sup>2</sup>              | #4 to #2           | 160-1025        |                        |                                 |                        |        |                     |  |        |  |             |
|                                 |                    | 160-1125        |                        |                                 |                        |        |                     |  |        |  |             |
| 35 mm <sup>2</sup>              | #2 to #1           | 160-1035        |                        |                                 |                        |        |                     |  |        |  |             |
|                                 |                    | 160-1135        |                        |                                 |                        |        |                     |  |        |  |             |
| 50 mm <sup>2</sup>              | #1 to 1/0          | 160-1050        |                        |                                 |                        |        |                     |  |        |  |             |
|                                 |                    | 160-1150        |                        |                                 |                        |        |                     |  |        |  |             |
| 50 mm <sup>2</sup>              | #1 to 1/0          | 320-1050        | 1387G3<br>OR<br>1370G1 |                                 |                        | 1322G4 |                     |  |        |  |             |
|                                 |                    | 320-1150        |                        |                                 |                        |        |                     |  |        |  |             |
| 70 mm <sup>2</sup>              | 2/0 AWG<br>3/0 AWG | 320-1070        |                        |                                 |                        |        |                     |  |        |  |             |
|                                 |                    | 320-1170        |                        |                                 |                        |        |                     |  |        |  |             |
| 95 mm <sup>2</sup>              | 3/0 AWG<br>4/0 AWG | 320-1095        |                        |                                 |                        |        |                     |  |        |  |             |
|                                 |                    | 320-1195        |                        |                                 |                        |        |                     |  |        |  |             |
| <b>Pilot/Auxiliary Contacts</b> |                    |                 |                        |                                 |                        |        |                     |  |        |  |             |
| ALL                             |                    | Pins<br>Sockets |                        |                                 | SOLDER ONLY            |        |                     |  |        |  |             |



1368



1368-NL



1368-B

\* Use 1322G3 with K stranded wire only.

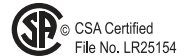
# Euro-Batteriestecker

Die Euro-Batteriestecker (Euro Battery Connectors, EBC) der Anderson™-Familie wurden fachkundig mit dem Ziel der einfachen Bedienbarkeit konzipiert und weisen einen innovativen Kontaktträger auf, der die Montage vereinfacht. Die EBC-Stecker liegen in den industriellen Standardgrößen 80, 160 und 320 vor, die alle der Norm DIN 43589-1 entsprechen. Design und Materialien bieten Leistungsmerkmale, die alle Anforderungen der Norm EN1175-1 erfüllen oder übertreffen. Alle ausgewählten Materialien sind RoHS-konform und wurden so ausgewählt, dass jahrelange Zuverlässigkeit in schwierigen Industrieumgebungen gewährleistet wird. Dank dieser Attribute sind die EBC-DIN-Stecker die richtige Wahl für eine breite Palette an industriellen Einsatzmöglichkeiten bei Materialhandhabung, Batterieaufladung, Nutzfahrzeugen, Antriebstechnik, Kehrmaschinen und vielen weiteren Anwendungen.



## Hauptmerkmale

**Sicherheitszertifizierungen** – UL, CSA und EN1175-1:1998 (Abr. EN1175-1)



**Erfüllt DIN 43589-1** – Bietet Schnittstellenkompatibilität für die Gehäuse, die Kontakte und die Luftadapter.

**Spannungscodierstifte** – EBC-Stecker bieten Codierstifte für Trockenzellen-, Nasszellen und universelle Anwendungen, die für DC-Anwendungen mit 24/36/48/72/80 und 96 Volt codiert sind.

**Stabile, moderne Polymer-Gehäuse** – Bieten überragenden Widerstand bei Schlag-, Säure- und Temperaturbelastungen.

**Versilberte Kupferkontakte** – Bieten hervorragende Leitfähigkeit und überragende Steckzyklen.

© 2019 Anderson Power Products, Inc. Alle Rechte vorbehalten. APP®, Anderson Power Products®, SB®, SBE®, SBX®, SBS® und das APP-Logo sind registrierte Warenzeichen von Anderson Power Products, Inc. Anderson™ ist ein Warenzeichen von Anderson Power Products, Inc.

Anderson wird angemessene Anstrengungen unternehmen, um genaue und aktuelle Inhalte in den Katalog aufzunehmen. Alle im Katalog enthaltenen Produktinformationen einschließlich der Bestellinformationen, Abbildungen, Spezifikationen und Abmessungen gelten zum Zeitpunkt der Veröffentlichung als zuverlässig, können sich jedoch ohne vorherige Ankündigung ändern. Anderson übernimmt keine Garantie oder Gewährleistung für die Richtigkeit. Der Inhalt des Katalogs kann technische Ungenauigkeiten und typografische Fehler enthalten und kann ohne vorherige Ankündigung geändert oder aktualisiert werden. Anderson kann außerdem jederzeit und ohne vorherige Ankündigung Verbesserungen und / oder Änderungen an den in den Inhalten beschriebenen Produkten und / oder Programmen vornehmen. Aktuelle Zeichnungen/Datenblätter und Spezifikationen sind auf Anfrage erhältlich.

Weder Anderson noch eine Partei, die an der Erstellung, Produktion oder Lieferung dieses Katalogs beteiligt ist, haften für direkte, zufällige, indirekte oder strafbare Folgen Schäden, die durch die Verwendung dieses Katalogs oder durch Fehler oder Auslassungen in seinem Inhalt entstehen.

## Elektrische Werte

### Stromstärke (Ampere)

| Kabelquerschnitt:  | EBC 80  |       |       | EBC 160 |       |       | EBC 320 |       |       |
|--------------------|---------|-------|-------|---------|-------|-------|---------|-------|-------|
|                    | EN1175* | CSA** | UL*** | EN1175* | CSA** | UL*** | EN1175* | CSA** | UL*** |
| 10 mm <sup>2</sup> | 95      | 70    | 90    | N/V     | N/V   | N/V   | N/V     | N/V   | N/V   |
| 16 mm <sup>2</sup> | 125     | 90    | 120   | 115     | 90    | 120   | N/V     | N/V   | N/V   |
| 25 mm <sup>2</sup> | 145     | 110   | 140   | 160     | 120   | 160   | N/V     | N/V   | N/V   |
| 35 mm <sup>2</sup> | 165     | 120   | 160   | 185     | 140   | 180   | N/V     | N/V   | N/V   |
| 50 mm <sup>2</sup> | N/V     | N/V   | N/V   | 225     | 160   | 220   | 225     | 165   | 220   |
| 75 mm <sup>2</sup> | N/V     | N/V   | N/V   | N/V     | N/V   | N/V   | 260     | 200   | 260   |
| 95 mm <sup>2</sup> | N/V     | N/V   | N/V   | N/V     | N/V   | N/V   | 350     | 260   | 340   |

\* EN1175:1998 erlaubt einen maximalen Temperaturanstieg von 65 °C (über 20±5 °C der Umgebungstemperatur)

\*\* CSA erlaubt einen maximalen Temperaturanstieg von 30 °C

\*\*\* UL erlaubt eine Temperatur insgesamt (basierend auf min. 25 °C Umgebungstemperatur) von 75 °C

### Betriebsspannung

|          | EBC 80 |       |       | EBC 160 |       |       | EBC 320 |       |       |
|----------|--------|-------|-------|---------|-------|-------|---------|-------|-------|
|          | EN1175 | CSA   | UL    | EN1175  | CSA   | UL    | EN1175  | CSA   | UL    |
| AC/DC    | 150 V  | 600 V | 600 V | 150 V   | 600 V | 600 V | 150 V   | 600 V | 600 V |
| DWV (AC) | 2000   | 2200  | 2200  | 2200    | 2200  | 2000  | 2200    | 2200  | 2200  |

### Kabelbereich

|                                 | EBC 80          |        | EBC 160         |        | EBC 320         |        |
|---------------------------------|-----------------|--------|-----------------|--------|-----------------|--------|
|                                 | mm <sup>2</sup> | AWG    | mm <sup>2</sup> | AWG    | mm <sup>2</sup> | AWG    |
| Strom – Min.                    | 10              | Nr. 8  | 16              | Nr. 6  | 50              | 1/0    |
| Strom – Max.                    | 35              | Nr. 2  | 50              | 1/0    | 95              | 3/0    |
| Oberer Hilfs. – Min.            | 1,5             | Nr. 18 | 4               | Nr. 12 | 4               | Nr. 12 |
| Oberer Hilfs. – Max.            | 2,5             | Nr. 14 | 4               | Nr. 12 | 4               | Nr. 12 |
| Unterer Führungs-/Hilfs. – Min. | 1,5             | Nr. 18 | 6               | Nr. 10 | 6               | Nr. 10 |
| Unterer Führungs-/Hilfs. – Max. | 2,5             | Nr. 14 | 6               | Nr. 10 | 6               | Nr. 10 |

### Durchschnittlicher Anfangskontaktwiderstand in zusammengeführtem Steckeranschluss – Mikrohm

|                                       | EBC 80 | EBC 160 | EBC 320 |
|---------------------------------------|--------|---------|---------|
| Durchschn. Kontaktwiderstand – Strom  | 176    | 95      | 77      |
| Durchschn. Kontaktwiderstand – Hilfs. | 1100   | 920     | 1000    |

Betriebstemperatur (alle Serien): -25 bis 75 °C

## Mechanische Werte

### Lebenszyklus - Für EN1175-1

|   | EBC 80      | EBC 160     | EBC 320     |
|---|-------------|-------------|-------------|
| Keine Belastung                         | > 5000      | > 5000      | > 5000      |
| Unter Belastung (Hot-Plugging bei 96 V) | 5 bei 200 A | 5 bei 400 A | 5 bei 800 A |

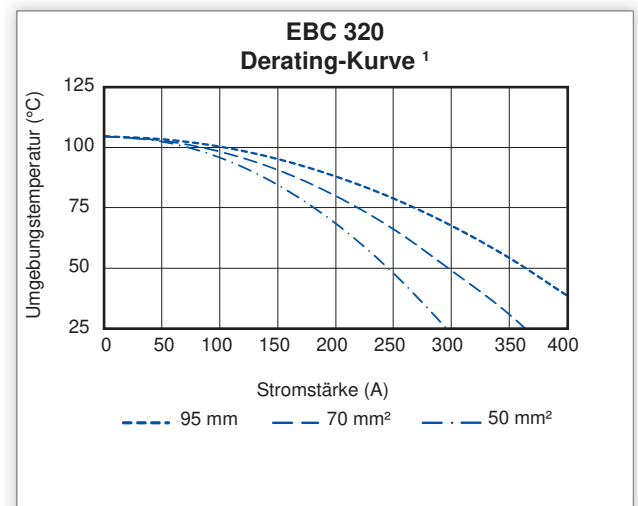
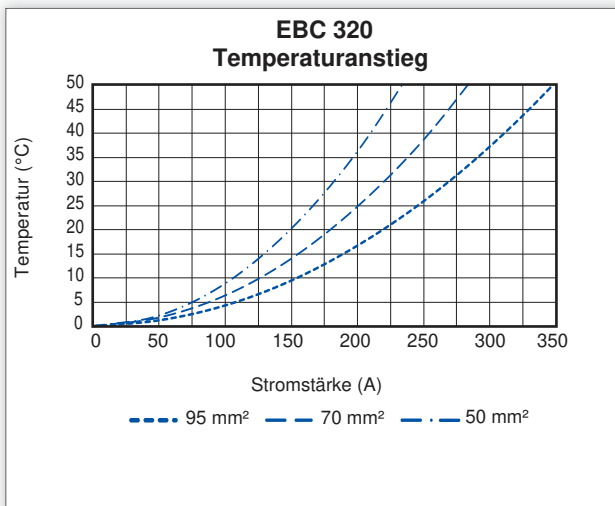
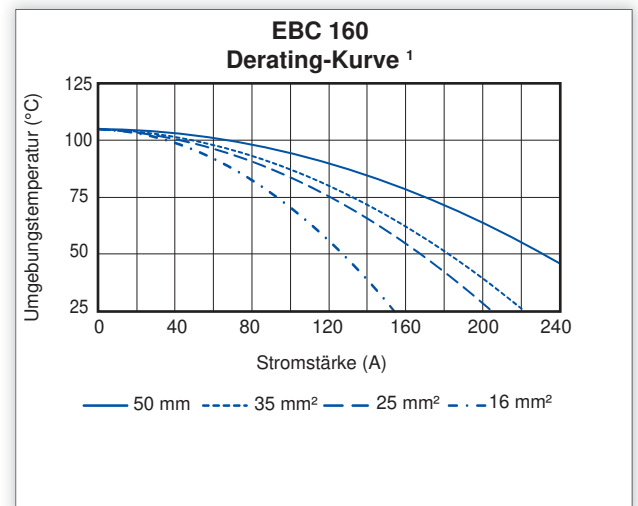
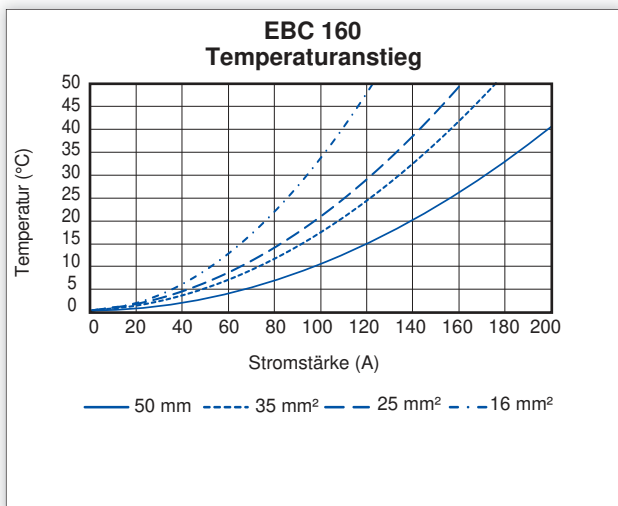
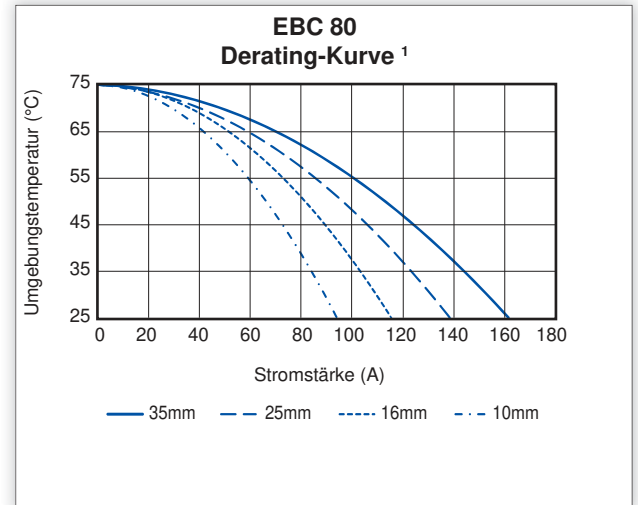
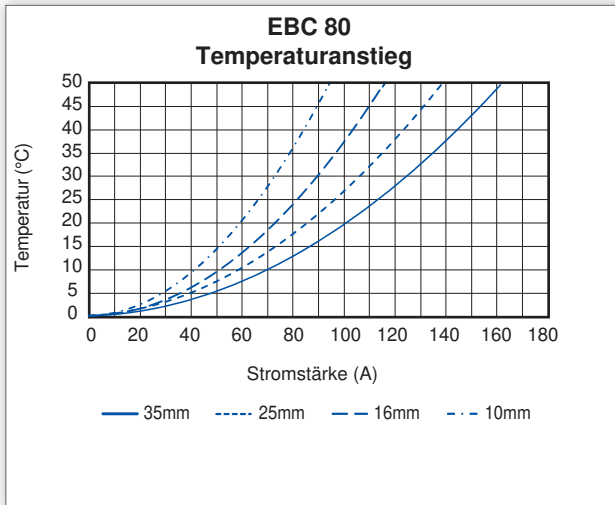
### Versch. Daten

|  | EBC 80       | EBC 160       | EBC 320       |
|--|--------------|---------------|---------------|
| Durchschn. Steckkraft N (lb)                       | 68 (15,3)    | 170 (38,2)    | 71 (16,0)     |
| Kontakthaltung N (lb)                              | 134 (30) min | 445 (100) min | 445 (100) min |
| Schutzgrad   | IP23         | IP23          | IP23          |
| Säurewiderstand (1,40 g/cm <sup>3</sup> bei 20 °C) | 16 Stunden   | 16 Stunden    | 16 Stunden    |
| Max. Druckbelastung in Bar (PSI) Luftadapter       | 0,8 (11,6)   | 0,8 (11,6)    | 0,8 (11,6)    |

## Materialien

|                                     | EBC 80 - EBC 160 - EBC 320 |
|-------------------------------------|----------------------------|
| Gehäuse                             | PBT/PC-Blend               |
| Kontakte                            | Kupferlegierung            |
| Kontaktbeschichtung – Strom (min.)  | Versilbert – 6 Micron      |
| Kontaktbeschichtung – Hilfs. (min.) | Versilbert – 6 Micron      |
| Hardware                            | Stahl, Zinkchromat         |

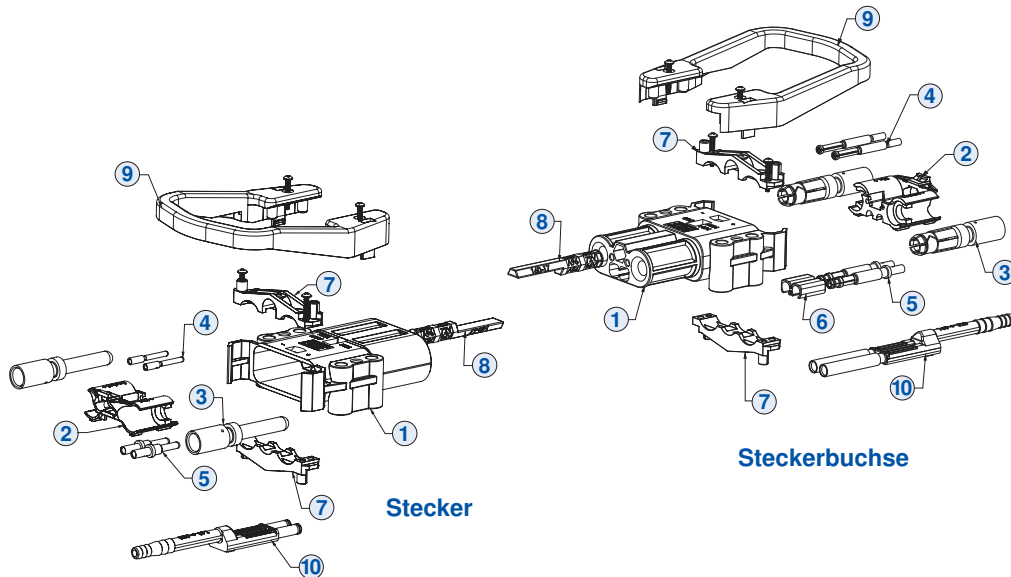
# Temperaturtabellen



<sup>1</sup> 0,8 Derating pro IEC 60512-3

HINWEIS 1: Temperaturwerte basieren nur auf Kontakten mit eingeschalteter Spannungsversorgung.

HINWEIS 2: Temperaturanstiegsdiagramme basieren auf einer Umgebungstemperatur von 25 ° C.



## Komponenten

| Teilenummer | Beschreibung - mm (AWG)   | EBC 80          |                 | EBC 160         |                 | EBC 320         |                 |
|-------------|---|-----------------|-----------------|-----------------|-----------------|-----------------|-----------------|
|             |   | Stecker         | Buchse          | Stecker         | Buchse          | Stecker         | Buchse          |
| 3           | <b>Stromkontakte</b>  |                 |                 |                 |                 |                 |                 |
|             | Stromkontakt 10 mm <sup>2</sup> (8 AWG)   | 80-1010         | 80-1110         | N/V             | N/V             | N/V             | N/V             |
|             | Stromkontakt 16 mm <sup>2</sup> (6 AWG)   | 80-1016         | 80-1116         | 160-1016        | 160-1116        | N/V             | N/V             |
|             | Stromkontakt 25 mm <sup>2</sup> (4 AWG)   | 80-1025         | 80-1125         | 160-1025        | 160-1125        | N/V             | N/V             |
|             | Stromkontakt 35 mm <sup>2</sup> (2 AWG)   | 80-1035         | 80-1135         | 160-1035        | 160-1135        | N/V             | N/V             |
|             | Stromkontakt 50 mm <sup>2</sup> (1 AWG bis 1/0)   | N/V             | N/V             | 160-1050        | 160-1150        | 320-1050        | 320-1150        |
|             | Stromkontakt 70 mm <sup>2</sup> (2/0 bis 3/0)   | N/V             | N/V             | N/V             | N/V             | 320-1070        | 320-1170        |
|             | Stromkontakt 95 mm <sup>2</sup> (3/0 bis 4/0)   | N/V             | N/V             | N/V             | N/V             | 320-1095        | 320-1195        |
| 4           | Oberer Hilfskontakt   | E80-32          | E80-33          | E160-32         | E160-33         | E320-34         | E320-35         |
| 5           | * Unterer Führungs-/Hilfskontakt  | E80-30          | E80-31          | 160-12          | 160-13          | 160-12          | 160-13          |
| 8           | <b>Spannungscodierstifte</b>  |                 |                 |                 |                 |                 |                 |
|             | Grauer Codierstift – Nasszelle (160 und 320 verwenden dieselben Codierstifte)   | 80-9            | 80-9            | 160-9           | 160-9           | 160-9           | 160-9           |
|             | Grüner Codierstift – Trockenzelle (160 und 320 verwenden dieselben Codierstifte)  | 80-17           | 80-17           | 160-17          | 160-17          | 160-17          | 160-17          |
|             | ** Gelber Codierstift (160 und 320 verwenden dieselben Codierstifte)  | 80-19           | Nicht verwendet | 160-19          | Nicht verwendet | 160-19          | Nicht verwendet |
| 9           | *** Griff – hohes Profil m/Schrauben  | N/V             | N/V             | E320-89         | E320-89         | E320-89         | E320-89         |
|             | *** Griff – flaches Profil m/Schrauben  | E80-89          | E80-89          | E160-89         | E160-89         | E160-89         | E160-89         |
|             | Roter Griff – flaches Profil m/Schrauben  | 80-8-R          | 80-8-R          | N/V             | N/V             | N/V             | N/V             |
| 10          | * Luftadapter   | E80-20          | E80-21          | E160-20         | E160-21         | E320-20         | E320-21         |
| 1           | Nur Gehäuse   | EP80-1          | EP80-2          | EP160-1         | EP160-2         | EP320-1         | EP320-2         |
| 2           | Kontakthalter   | 80-5B           | 80-5B           | EP160-5         | EP160-5         | EP320-5         | EP320-5         |
| 6           | Zusätzlicher unterer Führungs-/Hilfshalter  | Nicht verwendet | Nicht verwendet | Nicht verwendet | EP320-38        | Nicht verwendet | EP320-38        |
| 7           | Kabelklemmen mit Schrauben  | EP80-67         | EP80-67         | EP160-67        | EP160-67        | EP320-67        | EP320-67        |
| 1+2+7+ 8    | Steckergehäuse mit Kontakthalter und Kabelklemme mit Schrauben (grauer Codierstift) – Einzelpackung                                     | E80400-0009     |                 | E16400-0009     |                 | E32400-0009     |                 |
| 1+2+6+7+8   | Buchsengehäuse mit Kontakthalter, **** unterer Führungs-/Hilfshalter, Kabelklemmen mit Schrauben – (grauer Codierstift) – Einzelpackung | E80500-0009     |                 | E16500-0009     |                 | E32500-0009     |                 |
| 1+2+7+ 8    | Steckergehäuse mit Kontakthalter und Kabelklemme mit Schrauben (grüner Codierstift) – Einzelpackung                                     | E80400-0209     |                 | E16400-0209     |                 | E32400-0209     |                 |
| 1+2+6+7+8   | Buchsengehäuse mit Kontakthalter, **** unterer Führungs-/Hilfshalter, Kabelklemmen mit Schrauben – (grüner Codierstift) – Einzelpackung | E80500-0209     |                 | E16500-0209     |                 | E32500-0209     |                 |
| 1+2+7+ 8    | Steckergehäuse mit Kontakthalter und Kabelklemme mit Schrauben (gelber Codierstift) – Einzelpackung                                     | E80400-0309     |                 | E16403-0309     |                 | E32400-0309     |                 |

\* Untere Führungs-/Hilfskontakte verwenden dieselbe Gehäuseposition wie Luftadapter. Daher können sie nicht zusammen verwendet werden.

\*\* Der universelle gelbe Codierstift wird nur bei Steckeranschlüssen verwendet.

\*\*\* EBC 160- und EBC 320-Griffe können mit den Anschlüssen der EBC 160- und EBC 320-Serie verwendet werden.

\*\*\*\* Für Anschlüsse der Größe EBC 80 sind keine Führungs-/Hilfshalter erforderlich



# Konfiguration für Teilenummern

## Auswahl der Teilenummer für EBC 80-Stecker

| Serie | Geschlecht                     | Hauptkontakt | Griff | Codierstift | Hilfskontakte & Luftadapter |   | Verpackung   |
|-------|--------------------------------|--------------|-------|-------------|-----------------------------|---|--|
|       |                                |              |       |             |                             |   |  |
| E80   | 4 oder 5                       | 25           | -     | 1           | 0                           | 2 | 9  |
| 4     | Stecker                        |              |       |             |                             |   | 9 Einzelpackung  |
| 5     | Buchse                         |              |       |             |                             |   | 8 Großverpackung   |
| 00    | Keine – Separat bestellen      |              |       |             |                             | 0 | Keine  |
| 10    | 10 mm <sup>2</sup> (Nr. 8 AWG) |              |       |             |                             | 1 | (2) Untere Führungs-/Hilfskontakte                           |
| 16    | 16 mm <sup>2</sup> (Nr. 6 AWG) |              |       |             |                             | 2 | (2) Obere Hilfskontakte                                      |
| 25    | 25 mm <sup>2</sup> (Nr. 4 AWG) |              |       |             |                             | 4 | (2) Untere Führungs-/Hilfskontakte & (2) Obere Hilfskontakte |
| 35    | 35 mm <sup>2</sup> (Nr. 2 AWG) |              |       |             |                             |   |  |
| 0     | Nein                           |              |       |             | 0                           | 0 | Grau, Nasszelle  |
| 1     | Schwarz                        |              |       |             | 2                           | 0 | Grün, Trockenzelle   |
| 2     | Rot                            |              |       |             | 3                           | 0 | Gelb, universell (Verwendung nur mit Steckergehäuse)         |



## Auswahl der Teilenummer für EBC 160-Stecker

| Serie | Geschlecht                                  | Hauptkontakt | Griff | Codierstift | Hilfskontakte & Luftadapter |   | Verpackung   |
|-------|---|--------------|-------|-------------|-----------------------------|---|--|
|       |   |              |       |             |                             |   |  |
| E16   | 4 oder 5                                    | 25           | -     | 1           | 0                           | 2 | 9  |
| 4     | Stecker                                     |              |       |             |                             |   | 9 Einzelpackung  |
| 5     | Buchse                                      |              |       |             |                             |   | 8 Großverpackung   |
| 00    | Keine – Separat bestellen                   |              |       |             |                             | 0 | Keine  |
| 16    | 16 mm <sup>2</sup> (Nr. 6 AWG)              |              |       |             |                             | 1 | (2) Untere Führungs-/Hilfskontakte                           |
| 25    | 25 mm <sup>2</sup> (Nr. 4 AWG)              |              |       |             |                             | 2 | (2) Obere Hilfskontakte                                      |
| 35    | 35 mm <sup>2</sup> (Nr. 2 AWG)              |              |       |             |                             | 4 | (2) Untere Führungs-/Hilfskontakte & (2) Obere Hilfskontakte |
| 50    | 50 mm <sup>2</sup> (Nr. 1/0 AWG bis #1 AWG) |              |       |             |                             |   |  |
| 0     | Nein  |              |       |             | 0                           | 0 | Grau, Nasszelle  |
| 1     | Schwarz                                     |              |       |             | 2                           | 0 | Grün, Trockenzelle   |
|       |   |              |       |             | 3                           | 0 | Gelb, universell (Verwendung nur mit Steckergehäuse)         |



## Auswahl der Teilenummer für EBC 320-Stecker

| Serie | Geschlecht                                   | Hauptkontakt | Griff | Codierstift | Hilfskontakte & Luftadapter |   | Verpackung   |
|-------|--|--------------|-------|-------------|-----------------------------|---|--|
|       |  |              |       |             |                             |   |  |
| E32   | 4 oder 5                                     | 50           | -     | 1           | 0                           | 2 | 9  |
| 4     | Stecker                                      |              |       |             |                             |   | 9 Einzelpackung  |
| 5     | Buchse                                       |              |       |             |                             |   | 8 Großverpackung   |
| 00    | Keine – Separat bestellen                    |              |       |             |                             | 0 | Keine  |
| 50    | 50 mm <sup>2</sup> (Nr. 1/0 AWG bis #1 AWG)  |              |       |             |                             | 1 | (2) Untere Führungs-/Hilfskontakte                           |
| 70    | 70 mm <sup>2</sup> (Nr. 2/0 AWG bis 3/0 AWG) |              |       |             |                             | 2 | (2) Obere Hilfskontakte                                      |
| 95    | 95 mm <sup>2</sup> (Nr. 3/0 AWG bis 4/0 AWG) |              |       |             |                             | 4 | (2) Untere Führungs-/Hilfskontakte & (2) Obere Hilfskontakte |
| 0     | Nein   |              |       |             |                             | 5 | Luftadapter  |
| 1     | Schwarz                                      |              |       |             | 0                           | 0 | Grau, Nasszelle  |
|       |  |              |       |             | 2                           | 0 | Grün, Trockenzelle   |
|       |  |              |       |             | 3                           | 0 | Gelb, universell (Verwendung nur mit Steckergehäuse)         |



### Verpackung:

Einzelpackung (Kits) – alle Komponenten für einen vollständigen Anschluss werden zusammen in Einzelpackungen in einer Schachtel verpackt.  
 Großverpackung (Kits) – alle erforderlichen Komponenten werden nach Teilenummer getrennt in einer Schachtel/Kiste verpackt.

### Griffe:

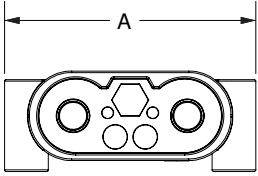
EBC 80 wird mit dem flachen T-Griff geliefert • EBC 160 wird mit dem flachen Griff geliefert • EBC 320 wird mit dem hohen Griff geliefert.



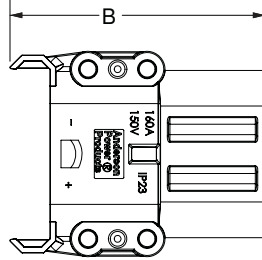
## Gehäuseabmessungen

|                 |   | EBC 80 |      | EBC 160 |      | EBC 320 |      |
|-----------------|---|--------|------|---------|------|---------|------|
|                 |   | mm     | Zoll | mm      | Zoll | mm      | Zoll |
| Stecker-gehäuse | A | 68,0   | 2,68 | 83,5    | 3,29 | 89,5    | 3,52 |
|                 | B | 74,4   | 2,93 | 103,8   | 4,09 | 123,5   | 4,86 |
|                 | C | 26,1   | 1,03 | 33,4    | 1,31 | 40,8    | 1,61 |
| Buchsen-gehäuse | A | 68,0   | 2,68 | 83,5    | 3,29 | 89,5    | 3,52 |
|                 | B | 73,8   | 2,91 | 104,0   | 4,09 | 117,0   | 4,61 |
|                 | C | 26,1   | 1,03 | 32,6    | 1,28 | 37,6    | 1,48 |

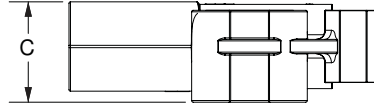
Stecker-Vorderansicht



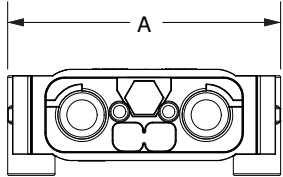
Stecker-Aufsicht



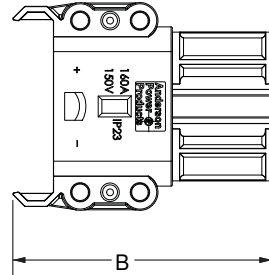
Stecker-Seitenansicht



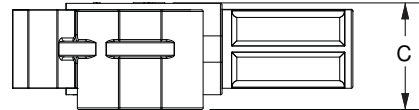
Gehäuse-Vorderansicht



Gehäuse-Aufsicht



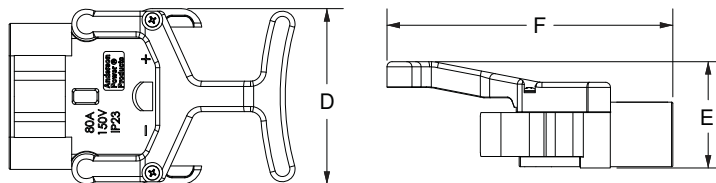
Gehäuse-Seitenansicht



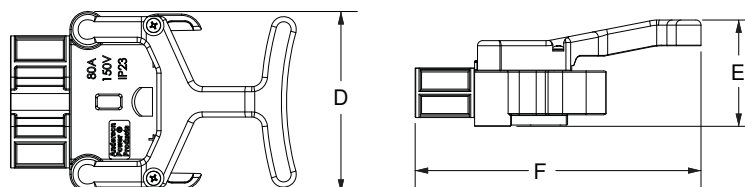
## Abmessungen der Gehäuse mit Griffen

|                 |   | EBC 80 |      |
|-----------------|---|--------|------|
|                 |   | mm     | Zoll |
| Stecker-gehäuse | D | 68,0   | 2,68 |
|                 | E | 41,2   | 1,62 |
|                 | F | 110,6  | 4,35 |
| Buchsen-gehäuse | D | 70,0   | 2,76 |
|                 | E | 41,2   | 1,62 |
|                 | F | 110,6  | 4,35 |

EBC 80 Steckergehäuse mit Griff



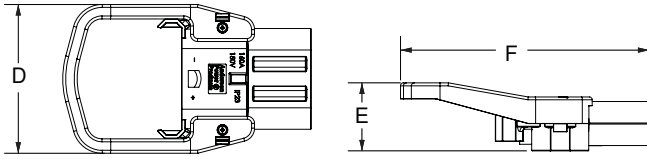
EBC 80 Buchsengehäuse mit Griff



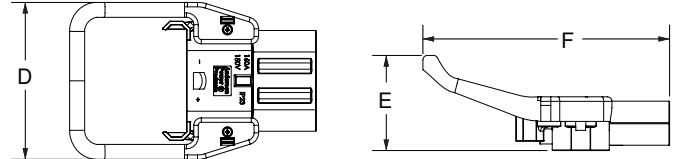
## EBC 160-Griffe

|                |   | Flaches Profil |      | Hohes Profil |      |                |   | Flaches Profil |      | Hohes Profil |      |
|----------------|---|----------------|------|--------------|------|----------------|---|----------------|------|--------------|------|
|                |   | mm             | Zoll | mm           | Zoll |                |   | mm             | Zoll | mm           | Zoll |
| Steckergehäuse | D | 101            | 4,0  | 106          | 4,2  | Buchsengehäuse | D | 101            | 4,0  | 106          | 4,2  |
|                | E | 46             | 1,8  | 64           | 2,5  |                | E | 46             | 1,8  | 64           | 2,5  |
|                | F | 168            | 6,6  | 167          | 6,6  |                | F | 173            | 6,6  | 172          | 6,8  |

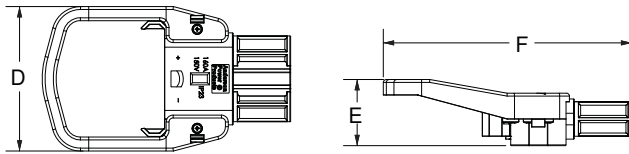
**Steckergehäuse,  
Griff mit flachem Profil**



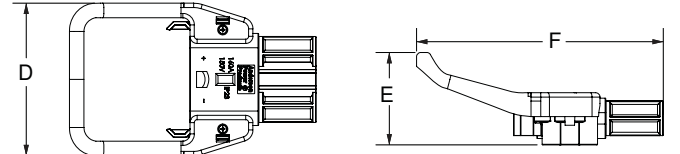
**Steckergehäuse,  
Griff mit hohem Profil**



**Buchsengehäuse,  
Griff mit flachem Profil**



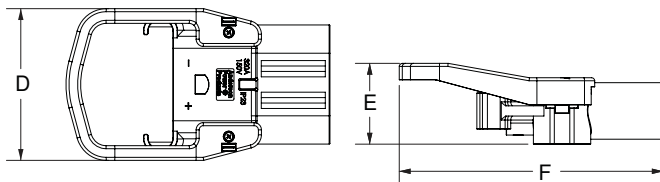
**Buchsengehäuse,  
Griff mit hohem Profil**



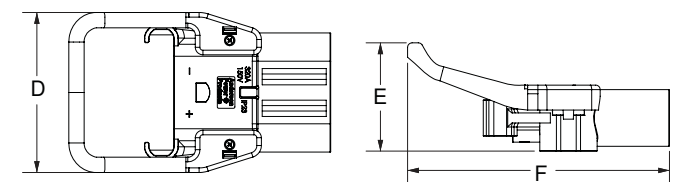
## EBC 320-Griffe

|                |   | Flaches Profil |      | Hohes Profil |      |                |   | Flaches Profil |      | Hohes Profil |      |
|----------------|---|----------------|------|--------------|------|----------------|---|----------------|------|--------------|------|
|                |   | mm             | Zoll | mm           | Zoll |                |   | mm             | Zoll | mm           | Zoll |
| Steckergehäuse | D | 101            | 4,0  | 106          | 4,2  | Buchsengehäuse | D | 101            | 4,0  | 106          | 4,2  |
|                | E | 54             | 2,1  | 72           | 2,8  |                | E | 53             | 2,1  | 71           | 2,8  |
|                | F | 175            | 6,9  | 174          | 6,9  |                | F | 71             | 2,8  | 173          | 6,8  |

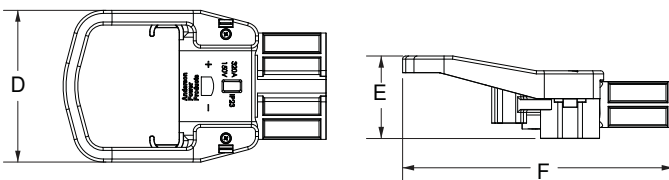
**Steckergehäuse,  
Griff mit flachem Profil**



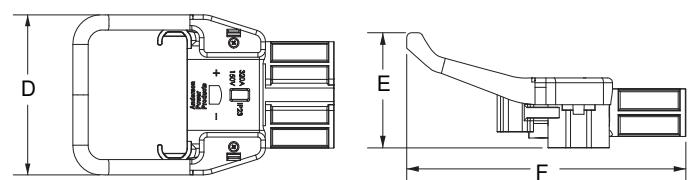
**Steckergehäuse,  
Griff mit hohem Profil**



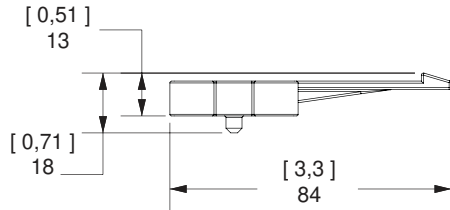
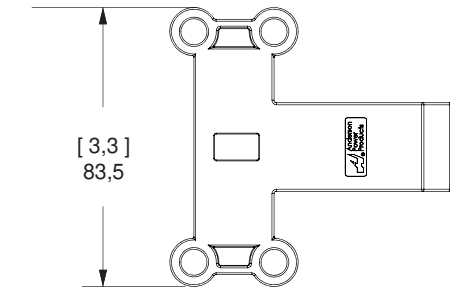
**Buchsengehäuse,  
Griff mit flachem Profil**



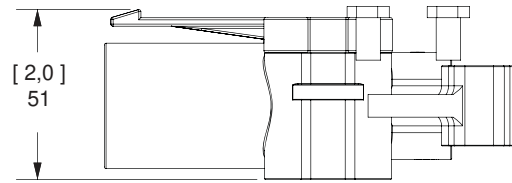
**Buchsengehäuse,  
Griff mit hohem Profil**



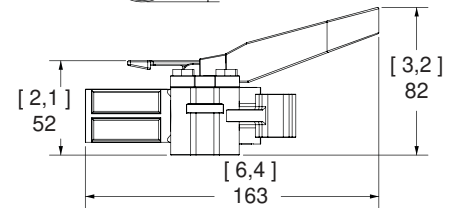
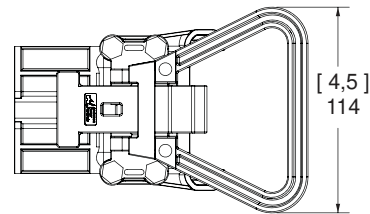
**Steckzunge 160 & 320**  
**Artikelnummer: A320-LP**



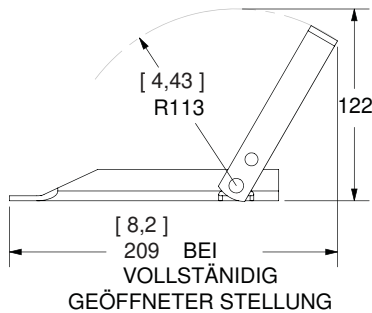
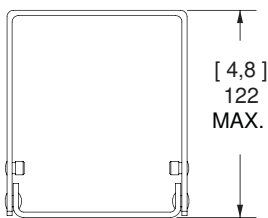
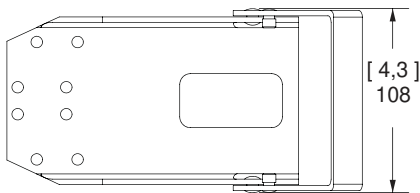
**Steckzunge auf**  
**EBC 160 & 320-Steckergehäuse**



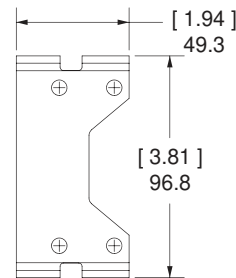
**Griff- und Hebelmontage auf**  
**Buchsengehäuse von EBC 160 & 320**  
**Artikelnummer: A320HL**



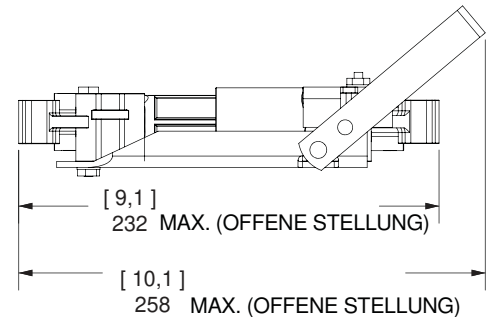
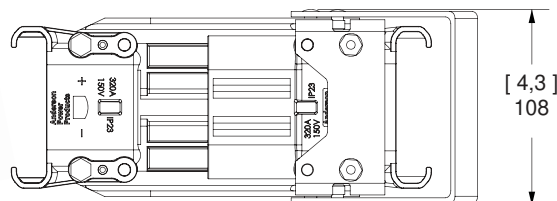
**Manuelle Entriegelung für EBC 160 & 320**  
**Artikelnummer: 994G4**



**Batteriehalterung**  
**Artikelnummer: 993G4**



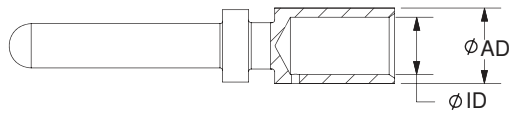
**Manuelle Entriegelung mit Steckern**



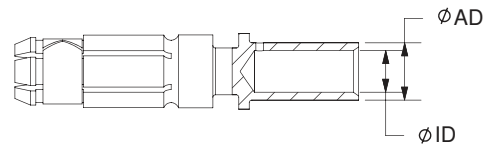
| Kontakte      |                    |                 |                |      |              |      |
|---------------|--------------------|-----------------|----------------|------|--------------|------|
| Serie         | Kabelquerschnitt   |                 | Flaches Profil |      | Hohes Profil |      |
|               | Metrisch           | AWG             | mm             | Zoll | mm           | Zoll |
| EBC 80        | 10 mm <sup>2</sup> | Nr. 6 bis 8     | 6,0            | 0,24 | 4,5          | 0,18 |
| EBC 80 / 160  | 16 mm <sup>2</sup> | Nr. 4 bis 6     | 8,4            | 0,33 | 6,0          | 0,24 |
|               | 25 mm <sup>2</sup> | Nr. 2 bis 4     | 11,0           | 0,43 | 8,0          | 0,31 |
|               | 35 mm <sup>2</sup> | Nr. 1 bis 2     | 12,5           | 0,49 | 9,0          | 0,35 |
| EBC 160 / 320 | 50 mm <sup>2</sup> | Nr. 1 bis 1/0   | 14,5           | 0,57 | 11,0         | 0,43 |
| EBC 320       | 70 mm <sup>2</sup> | Nr. 2/0 bis 3/0 | 17,0           | 0,67 | 13,0         | 0,51 |
|               | 95 mm <sup>2</sup> | Nr. 3/0 bis 4/0 | 19,8           | 0,78 | 15,0         | 0,59 |



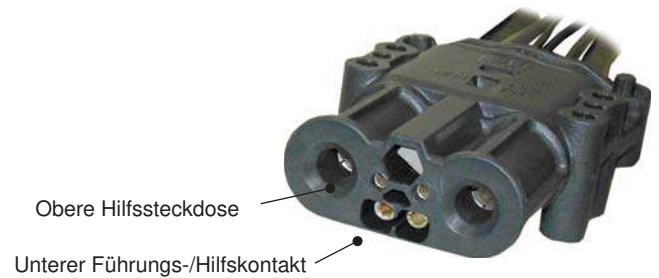
### Stromkontaktstecker



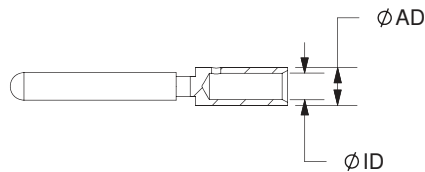
### Stromkontaktbuchse



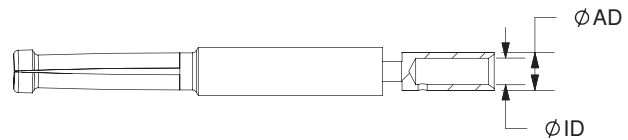
| Obere Hilfsstecker |                  |               |     |      |     |      | Untere Führungs-/Hilfsstecker |                 |     |      |      |      |
|--------------------|------------------|---------------|-----|------|-----|------|-------------------------------|-----------------|-----|------|------|------|
| Serie              | Kabelquerschnitt |               | AD  |      | ID  |      | Kabelquerschnitt              | AD              |     | ID   |      |      |
|                    | mm <sup>2</sup>  | AWG           | mm  | Zoll | mm  | Zoll |                               | mm <sup>2</sup> | AWG | mm   | Zoll | mm   |
| EBC 80             | 2,5              | Nr. 14 bis 18 | 3,9 | 0,15 | 2,2 | 0,09 | 2,5                           | Nr. 14 bis 18   | 3,9 | 0,15 | 2,2  | 0,09 |
| EBC 160 / 320      | 4                | Nr. 12        | 4,1 | 0,16 | 2,9 | 0,11 | 6,0                           | Nr. 10          | 5,0 | 0,20 | 3,9  | 0,15 |



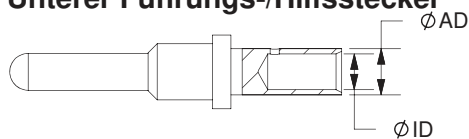
### Oberer Hilfsstecker



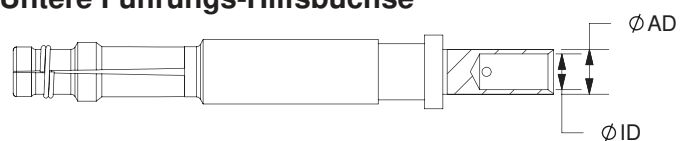
### Oberer Hilfsbuchse



### Unterer Führungs-/Hilfsstecker

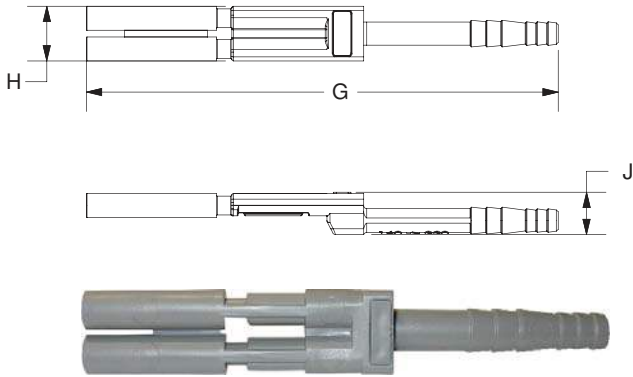


### Untere Führungs-/Hilfsbuchse

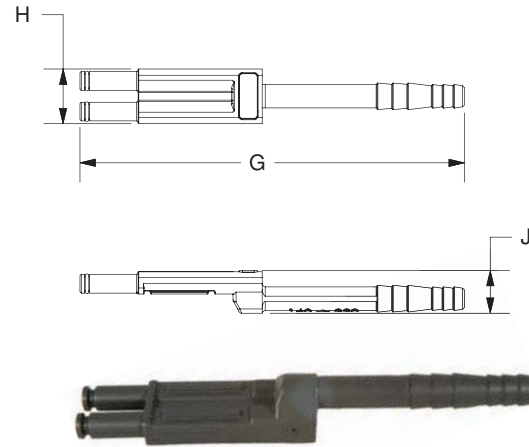


| Gehäuse-Zwillingsluftadapter |     |      |      |      |      |      | Stecker-Zwillingsluftadapter |      |      |      |      |      |
|------------------------------|-----|------|------|------|------|------|------------------------------|------|------|------|------|------|
| Serie                        | G   |      | H    |      | J    |      | G                            |      | H    |      | J    |      |
|                              | mm  | Zoll | mm   | Zoll | mm   | Zoll | mm                           | Zoll | mm   | Zoll | mm   | Zoll |
| EBC 80                       | 102 | 4,0  | 15,8 | 0,62 | 13,0 | 0,51 | 87                           | 3,4  | 15,8 | 0,62 | 13,0 | 0,51 |
| EBC 160 / 320                | 154 | 6,1  | 17,8 | 0,70 | 13,9 | 0,55 | 125                          | 4,9  | 17,8 | 0,70 | 14,0 | 0,55 |

### Gehäuse-Luftadapter

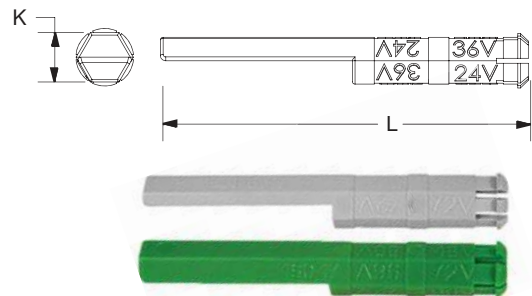


### Stecker-Luftadapter



| Spannungscodierstift für Nass-/Trockenzellen |     |      |    |      | Universeller Spannungscodierstift |      |    |      |
|--|-----|------|----|------|-----------------------------------|------|----|------|
| Serie  | K   |      | L  |      | K                                 |      | L  |      |
|  | mm  | Zoll | mm | Zoll | mm                                | Zoll | mm | Zoll |
| EBC 80                                       | 8,0 | 0,31 | 45 | 1,77 | 8,0                               | 0,31 | 46 | 1,8  |
| EBC 160 / 320                                | 9,3 | 0,37 | 69 | 2,72 | 11,8                              | 0,46 | 69 | 2,7  |

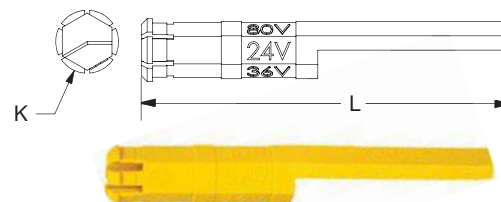
### Spannungscodierstift für Nass-/Trockenzelle – Grau oder Grün



| Codierstecker | Identifikation   | Montiert in  |
|---------------|--|--|
|               | Verwendet für Nasszellenbatterie/ Ladegerät<br>– Farbe Grau    | Batterieanschlussbuchse und Ladestecker  |
|               | Verwendet für Trockenzellenbatterie/ Ladegerät<br>– Farbe Grün | Batterieanschlussbuchse und Ladestecker  |
|               | Nur für Fahrzeug – Gelb (Universell)                           | Nur Fahrzeugstecker – wird verwendet, wenn im Fahrzeug Nass- oder Trockenzellenbatterien eingesetzt werden können. |

### Universeller Spannungscodierstift – Gelb (Verwendung nur mit Steckergehäuse)

Universelle (gelbe) Spannungscodierstift dürfen nur auf der Fahrzeugseite verwendet werden, um die Verwendung mit Trocken- und Nasszellenbatterien zu ermöglichen.



# Werkzeuginformationen

| EBC 80A, 160A, & 320A (DIN) – Pneumatische Werkzeuge |                     |  |                             |                                  |            |   |                                   |
|--|---------------------|--|-----------------------------|----------------------------------|------------|---|-----------------------------------|
| Kabelquerschnitt                                     |                     | Teilenummern                           |                             | Crimpwerkzeuge für lose Kontakte |            |   |                                   |
| mm <sup>2</sup>                                      | AWG                 | Stromkontakt                           | Pneumatisches Tischwerkzeug | +                                | DIE        | + | Locator (Einzel-Crimp)            |
| 10 mm <sup>2</sup>                                   | Nr. 8 bis Nr. 6     | 80-1010<br>80-1110                     | Noch offen                  |                                  | Noch offen |   | Noch offen                        |
| 16 mm <sup>2</sup>                                   | Nr. 6 bis Nr. 4     | 80-1016<br>80-1116                     |                             |                                  |            |   |                                   |
| 25 mm <sup>2</sup>                                   | Nr. 4 bis Nr. 2     | 80-1025<br>80-1125                     |                             |                                  |            |   |                                   |
| 35 mm <sup>2</sup>                                   | Nr. 2 bis Nr. 1     | 80-1035<br>80-1135                     |                             |                                  |            |   |                                   |
|  |                     |  |                             |                                  |            |   |                                   |
|  |                     |  |                             |                                  |            |   |                                   |
| mm <sup>2</sup>                                      | AWG                 | Stromkontakt                           | Pneumatisches Tischwerkzeug | +                                | Die        | + | Locator (Doppel-Crimp)            |
| 16 mm <sup>2</sup>                                   | Nr. 6 bis Nr. 4     | 160-1016<br>160-1116                   | 1387G2                      |                                  | 1303G14    |   | 1304G21 Buchse<br>1304G20 Stecker |
| 25 mm <sup>2</sup>                                   | Nr. 4 bis Nr. 2     | 160-1025<br>160-1125                   |                             |                                  |            |   |                                   |
| 35 mm <sup>2</sup>                                   | Nr. 2 bis Nr. 1     | 160-1035<br>160-1135                   |                             |                                  |            |   |                                   |
| 50 mm <sup>2</sup>                                   | Nr. 1 bis 1/0       | 160-1050<br>160-1150                   |                             |                                  |            |   |                                   |
| 50 mm <sup>2</sup>                                   | Nr. 1 bis 1/0 AWG   | 320-1050<br>320-1150                   | 1387G2                      |                                  | 1303G8     |   | 1304G29 Stecker                   |
| 70 mm <sup>2</sup>                                   | 2/0 AWG bis 3/0 AWG | 320-1070<br>320-1170                   |                             |                                  |            |   |                                   |
| 95 mm <sup>2</sup>                                   | 3/0 AWG bis 4/0 AWG | 320-1095<br>320-1195                   |                             |                                  |            |   |                                   |
|  |                     |  |                             |                                  |            |   |                                   |
| <b>Führungs-/Hilfskontakte</b>                       |                     |  |                             |                                  |            |   |                                   |
| ALLE   |                     | Alle Crimpstecker<br>Alle Crimpbuchsen | NUR LÖTMASCHINE             |                                  |            |   |                                   |



1387G1 & 1387G2



1370G1 & 1387G3

| EBC 80A, 160A, & 320A (DIN) – Hydraulische Werkzeuge |                     |                      |                            |                                  |   |      |                            |
|--|---------------------|----------------------|----------------------------|----------------------------------|---|------|----------------------------|
| Kabelquerschnitt                                     |                     | Teilenummern         |                            | Crimpwerkzeuge für lose Kontakte |   |      |                            |
| mm <sup>2</sup>                                      | AWG                 | Stromkontakt         | Hydraulisches Handwerkzeug | +                                | DIE                                       | ODER | Hydraulisches Handwerkzeug |
| 10 mm <sup>2</sup>                                   | Nr. 8 bis Nr. 6     | 80-1010<br>80-1110   | 1387G3<br>ODER<br>1370G1   |                                  | 1322G16                                   |      | N/V                        |
|  | Nr. 6 bis           | 80-1016<br>80-1116   |                            |                                  |   |      |                            |
| 16 mm <sup>2</sup>                                   |                     | 80-1016<br>80-1116   |                            |                                  |   |      |                            |
| 25 mm <sup>2</sup>                                   | Nr. 4 bis Nr. 2     | 80-1025<br>80-1125   |                            |                                  |   |      |                            |
| 35 mm <sup>2</sup>                                   | Nr. 2 bis Nr. 1     | 80-1035<br>80-1135   | N/V                        |                                  | N/V                                       |      |                            |
| 16 mm <sup>2</sup>                                   | Nr. 6 bis Nr. 4     | 160-1016<br>160-1116 | 1387G2                     |                                  | 1322G9                                    |      | 1368 Serie                 |
| 25 mm <sup>2</sup>                                   | Nr. 4 bis Nr. 2     | 160-1025<br>160-1125 |                            |                                  |   |      |                            |
| 35 mm <sup>2</sup>                                   | Nr. 2 bis Nr. 1     | 160-1035<br>160-1135 |                            |                                  |   |      |                            |
| 50 mm <sup>2</sup>                                   | 1/0 AWG             | 160-1050<br>160-1150 |                            |                                  |   |      |                            |
| 50 mm <sup>2</sup>                                   | Nr. 1 bis 1/0 AWG   | 320-1050<br>320-1150 |                            |                                  |   |      |                            |
| 70 mm <sup>2</sup>                                   | 2/0 AWG bis 3/0 AWG | 320-1070<br>320-1170 |                            |                                  |   |      |                            |
| 95 mm <sup>2</sup>                                   | 3/0 AWG bis 4/0 AWG | 320-1095<br>320-1195 | 1387G2                     |                                  | 1322G4<br>1322G3 (K)*<br>1322G2<br>1322G1 |      |                            |
| <b>Führungs-/Hilfskontakte</b>                       |                     |                      |                            |                                  |   |      |                            |
| ALLE   |                     | Stecker<br>Buchsen   | NUR LÖTMASCHINE            |                                  |   |      |                            |



1368



1368-NL



1368-B

\* 1322G3 nur mit K-Litze verwenden.

## ADDITIONAL PRODUCTS FOR INDUSTRIAL VEHICLES



### SBE®320 & SBX®350 - up to 550 Amps

- Touch Safe
- EN1175-1
- Up to 8 Auxiliaries



### SB® - up to 450 Amps

- Genderless Housings
- Hot Plugging AC or DC
- Keyed Housings



### SBS®75X - up to 110 Amps

- Wire-to-Wire / Wire-to-Board
- Touch Safe Interface
- Ground or Auxiliary Positions



#### HEADQUARTERS

Anderson Power Products®  
13 Pratts Junction Road  
Sterling, MA 01564-2305 USA  
T: 978-422-3600  
F: 978-422-0128

#### EUROPE

Anderson Power Products® Ltd.  
Unit 3 Europa Court  
Europa Boulevard  
Westbrook, Warrington  
Cheshire, WA5 7TN United Kingdom  
T: +44 (0) 1925 428390  
F: +44 (0) 1925 520203

#### ASIA / PACIFIC

IDEAL Anderson Asia Pacific Ltd.  
Unit 922-928, Topsail Plaza  
11 On Sum Street  
Shatin N.T., Hong Kong  
T: +(852) 2636 0836  
F: +(852) 2635 9036

#### CHINA

IDEAL Anderson Technologies (Shenzhen) Ltd.  
Block A8, Tantou Western Industrial Park  
Songgang, Baoan District  
Shenzhen, P.R. China 518105  
T: +(86) 755 2768 2118/3393 2388  
F: +(86) 755 2768 2218

#### TAIWAN

IDEAL Anderson Asia Pacific Ltd.  
Taiwan Branch, 4F-2, No.116  
Dadun 20th St., Situn District  
Taichung City 407, Taiwan (R.O.C.)  
T: +(886) 4 2310 6451  
F: +(886) 4 2310 6460



An IDEAL Company

2019-0051

DS-EBC Rev 3

VISIT US AT [WWW.ANDERSONPOWER.COM](http://WWW.ANDERSONPOWER.COM)

