

PROPRIETARY DATA:
 This document and information contained herein are the property of Westcor and are not to be reproduced or used in any manner without the prior written consent of Westcor, a division of VECO Corporation.

INTERMEDIATE DIMENSION SPECIFIED

1 MATERIALS UL RECOGNIZED PAV-2 FLAMMABILITY RATING CLASS B (130°C) REQUIRED

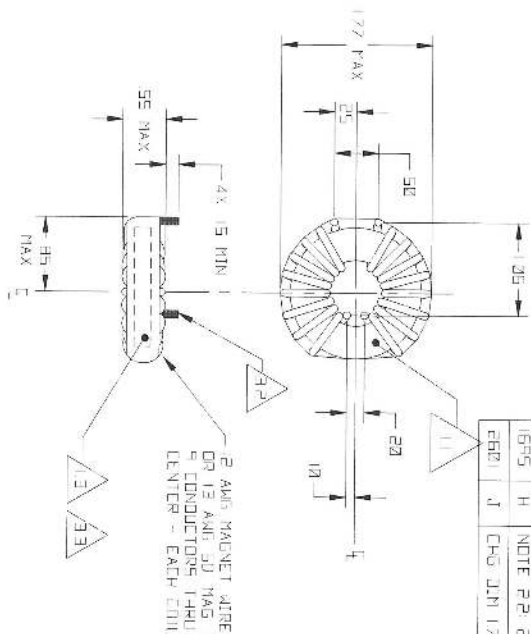
- ▲ CORE TORQUE: $\omega = 5000$
 MAINLINE: ZI-43805-1E OR PERMADOR B7-1042-25, RSK
 SHANGHAI SUPER LIGHT ELECTRONICS COMPONENTS LTD
 P/N: TBX19XGJ5-C MATERIAL RSK (CAN BE USED IF RUSH COMPLIANT)
- 1.2 WIRE: UL RECOGNIZED 100% RATING MAGNET WIRE APPROVED PER ESSEX OTHER WIRE HAS TO BE RUSH COMPLIANT CERTIFIED BEFORE USE
 COMPUTER WIRE: 3R 4U DR 455 OR 4135/67 OR SAINT-GOBAIN #1702

2 SPECIFICATIONS

- 2.1 L = 252 UH MIN/COIL (MAX. 41V-HZ)
- 2.2 DCR = 22 OHMS MAX/COIL
- 2.3 POWER LOSS = 64 W MAX @ 42A/COIL
- 2.4 HI-POT TEST COIL TO COIL, 6500VDC TO INSURE INTEGRITY OF WINDING INSULATION/COVERING HAS NOT BEEN BREACHED

3 CONSTRUCTION

- ▲ WIND COILS EVENLY SPALED (NOTE POLARITY)
- ▲ REMOVE INSULATION AND TIN LEADS APPROX FLUSH WITH THE CORE AS SHOWN. (E COIL MUST REST FLAT ON PCB)
- ▲ CLEAN INDUCTOR WITH TAPE. (SEE NOTE 1.3) MARK PART NUMBER AND REVISION IN (BLACK) APPROX WHERE SHOWN USING A PERMANENT MARKING METHOD



NOTE: CERTIFICATION OF MATERIAL COMPLIANCE REQUIRED. COMPLETED ASSEMBLY MUST BE (RUSH) COMPLIANT PER VENDOR SPEC CST-0021.

APPROVALS		DATE	
CHECKED BY	DATE	CHECKED BY	DATE
DESIGNED BY	DATE	DESIGNED BY	DATE
APPROVED BY	DATE	APPROVED BY	DATE
REVISIONS	DATE	REVISIONS	DATE
1		1	
2		2	
3		3	
4		4	
5		5	
6		6	
7		7	
8		8	
9		9	
10		10	
11		11	
12		12	
13		13	
14		14	
15		15	
16		16	
17		17	
18		18	
19		19	
20		20	
21		21	
22		22	
23		23	
24		24	
25		25	
26		26	
27		27	
28		28	
29		29	
30		30	
31		31	
32		32	
33		33	
34		34	
35		35	
36		36	
37		37	
38		38	
39		39	
40		40	
41		41	
42		42	
43		43	
44		44	
45		45	
46		46	
47		47	
48		48	
49		49	
50		50	
51		51	
52		52	
53		53	
54		54	
55		55	
56		56	
57		57	
58		58	
59		59	
60		60	
61		61	
62		62	
63		63	
64		64	
65		65	
66		66	
67		67	
68		68	
69		69	
70		70	
71		71	
72		72	
73		73	
74		74	
75		75	
76		76	
77		77	
78		78	
79		79	
80		80	
81		81	
82		82	
83		83	
84		84	
85		85	
86		86	
87		87	
88		88	
89		89	
90		90	
91		91	
92		92	
93		93	
94		94	
95		95	
96		96	
97		97	
98		98	
99		99	
100		100	

WESTCOR A Division of VECO
 100 WESTCOR WOODS LANE
 IND COMMON MODE 35MMH 42A
 STAFF CODE: 35-00229-01
 DATE: 05/18/05
 SHEET: 1 OF 1