

Han K 6/36 Pos. M Insert Crimp

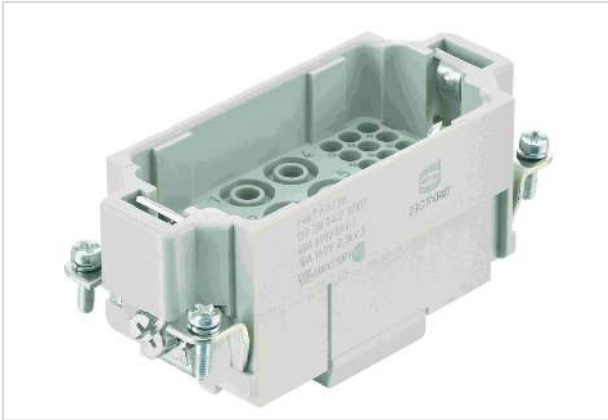


Image is for illustration purposes only. Please refer to product description.

| | |
|--------------------|---|
| Part number | 09 38 042 3001 |
| Specification | Han K 6/36 Pos. M Insert Crimp |
| HARTING eCatalogue | https://b2b.harting.com/09380423001 |

Identification

| | |
|----------------|-------------------------|
| Category | Inserts |
| Series | Han-Com [®] |
| Identification | Han [®] K 6/36 |

Version

| | |
|---------------------------|---|
| Termination method | Crimp termination |
| Gender | Male |
| Size | 16 B |
| Number of contacts | 42 |
| Number of signal contacts | 36 |
| Number of power contacts | 6 |
| PE contact | Yes |
| Details | Please order crimp contacts separately. |

Technical characteristics

| | |
|-------------------------|--|
| Conductor cross-section | 1.5 ... 6 mm ² 0.14 ... 2.5 mm ² Signal |
| Wire outer diameter | ≤5 mm |
| Rated current | 40 A |
| Rated voltage | 690 V |
| Rated impulse voltage | 8 kV |
| Pollution degree | 3 |
| Rated current (signal) | 10 A |



Pushing Performance
Since 1945

Technical characteristics

| | |
|------------------------------------|-------------------|
| Rated voltage (signal) | 160 V |
| Rated impulse voltage (signal) | 2.5 kV |
| Pollution degree (signal) | 3 |
| Rated current acc. to UL | 40 A |
| Rated voltage acc. to UL | 600 V |
| Rated current acc. to UL (signal) | 10 A |
| Rated voltage acc. to UL (signal) | 600 V |
| Rated current acc. to CSA | 40 A |
| Rated voltage acc. to CSA | 300 V |
| Rated current acc. to CSA (signal) | 10 A |
| Rated voltage acc. to CSA (signal) | 300 V |
| Insulation resistance | $>10^{10} \Omega$ |
| Limiting temperature | -40 ... +125 °C |
| Mating cycles | ≥ 500 |

Material properties

| | |
|---|------------------------------|
| Material (insert) | Polycarbonate (PC) |
| Colour (insert) | RAL 7032 (pebble grey) |
| Material flammability class acc. to UL 94 | V-0 |
| RoHS | compliant |
| ELV status | compliant |
| China RoHS | e |
| REACH Annex XVII substances | Not contained |
| REACH ANNEX XIV substances | Not contained |
| REACH SVHC substances | Not contained |
| California Proposition 65 substances | Yes |
| California Proposition 65 substances | Lead Nickel |
| Fire protection on railway vehicles | EN 45545-2 (2020-08) |
| Requirement set with Hazard Levels | R22 (HL 1-3) R23 (HL 1-3) |

Specifications and approvals

| | |
|----------------|--------------------------|
| Specifications | IEC 60664-1 IEC 61984 |
|----------------|--------------------------|



Pushing Performance
Since 1945

Specifications and approvals

| | |
|-----------|--|
| UL / CSA | UL 1977 ECBT2.E235076 CSA-C22.2 No. 182.3 ECBT8.E235076 |
| Approvals | DNV GL |

Commercial data

| | |
|--------------------------------|---|
| Packaging size | 1 |
| Net weight | 64 g |
| Country of origin | Romania |
| European customs tariff number | 85366990 |
| GTIN | 5713140056510 |
| eCl@ss | 27440205 Contact insert for industrial connectors |