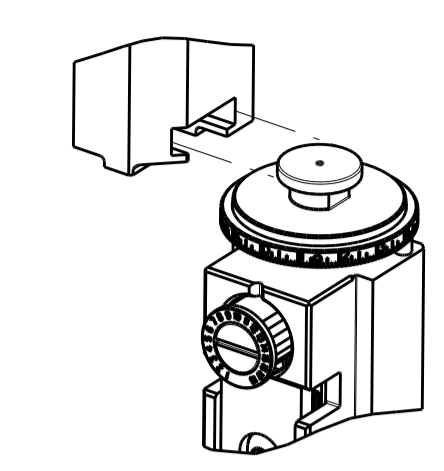


| PART NUMBER | REVISION | DESCRIPTION                      | FEED TYPE  |
|-------------|----------|----------------------------------|------------|
| 2151320-1   | G        | FINE CRIMP HEIGHT ADJUST         | MECHANICAL |
| 2151320-2   | G        | FINE CRIMP HEIGHT ADJUST         | PNEUMATIC  |
| 7-2151320-1 | G        | MECHANICAL AND CRIMP TOOLING KIT | MECHANICAL |
| 7-2151320-2 | G        | PNEUMATIC AND CRIMP TOOLING KIT  | PNEUMATIC  |
| 7-2151320-7 | A        | CRIMP TOOLING KIT                | -          |

ATLANTIC VERSION TERMINATOR INTERFACE ADAPTER



| APPLICATOR DATA |                |      |
|-----------------|----------------|------|
| CRIMP           | SIZE           | TYPE |
| WIRE            | .100 [2.54 mm] | F    |
| INSUL           | .180 [4.57 mm] | F    |

APPLICATOR INSTRUCTIONS 408-35042

| TERMINAL DATA: TE TERMINAL           |             | TE CRIMP SPECIFICATION    |   |
|--------------------------------------|-------------|---------------------------|---|
| TERMINAL NAME: .140 DIA PIN & SOCKET |             |                           |   |
| WIRE STRIP LENGTH                    |             | INSULATION DIAMETER RANGE | $\varnothing .086-.180$ IN [2.18-4.57 mm] |
| TERMINAL APPLICATION SPECIFICATION   | 114-1007    |                           |   |
| TERMINALS APPLIED                    |             |                           |   |
| TE TERMINAL                          | TE TERMINAL | TE TERMINAL               | TE TERMINAL                               |
| 925714-1                             | 925715-1    | 61626-1                   | 925851-1                                  |
| 925714-2                             | 925715-2    | 61626-2                   | 925851-2                                  |
| 925714-3                             | 925715-3    | 61627-1                   | 794974-1                                  |
| 925714-4                             | 925715-4    | 61627-2                   |   |
| 925714-8                             | 925715-5    |                           |   |

| WIRE SIZE | CRIMP HEIGHT INCH [mm]      | CRIMP HEIGHT REFERENCE SETTING | STABILIZER SETTING |
|-----------|-----------------------------|--------------------------------|--------------------|
| 14 AWG    | 0.071+/-0.002 [1.80+/-0.05] | 4.9                            | 7                  |
| 2.00mm2   | 0.070+/-0.002 [1.78+/-0.05] | 5.1                            | 6                  |
| 1.50mm2   | 0.063+/-0.002 [1.60+/-0.05] | 6.7                            | 6                  |
| 16 AWG    | 0.061+/-0.002 [1.55+/-0.05] | 7.3                            | 5                  |
| 1.00mm2   | 0.056+/-0.002 [1.42+/-0.05] | 8.9                            | 5                  |
| 18 AWG    | 0.054+/-0.002 [1.37+/-0.05] | 9.5                            | 3                  |
| 0.75mm2   | 0.053+/-0.002 [1.35+/-0.05] | 9.8                            | 3                  |
| 20 AWG    | 0.051+/-0.002 [1.30+/-0.05] | 10.3                           | 3                  |
| 0.50mm2   | 0.051+/-0.002 [1.30+/-0.05] | 10.3                           | 3                  |

- RECOMMENDED SPARE PARTS
- REFER TO SUPPLIED INSTRUCTION SHEET FOR CLEANING, LUBRICATION AND STORAGE OF APPLICATOR.
- APPLY PART NUMBER 2-23419-6 LOCTITE TO THREADS OF ITEM 242.
- CRIMP HEIGHT REFERENCE SETTING WAS THE SETTING USED WHEN THE APPLICATOR WAS QUALIFIED AT THE FACTORY. ADJUSTMENT MAY BE NECESSARY WHEN RUNNING APPLICATOR IN THE FIELD.
- UNLESS SPECIFIED OTHERWISE TORQUE VALUES SHALL BE USED PER DOCUMENT, 101-35000.
- INSULATION DIA: .149 OR LESS  
 STRIP LENGTH: .188-.132  
 INSULATION DIA: .150-.180  
 STRIP LENGTH: .281-.343
- STABILIZER KNOB MUST BE ADJUSTED TO SETTINGS INDICATED (WHICH CORRESPOND TO WIRE CRIMP HEIGHT SETTINGS).
- TERMINAL LUBRICANT IS RECOMMENDED.

**\*WARNING**  
 ON INSTALLATION, SET WIRE DISC TO CRIMP HEIGHT REFERENCE SETTING FOR LARGEST WIRE SIZE. CRIMP HEIGHT REFERENCE SETTINGS GREATER THAN THE VALUE SHOWN MAY CAUSE DAMAGE TO THE CRIMP TOOLING. REFER TO THE INSTRUCTION SHEET FOR PROPER SETUP AND ADJUSTMENTS.

| LOC | DIST | REVISIONS |     |               |           |     |      |
|-----|------|-----------|-----|---------------|-----------|-----|------|
| A   | 66   | P         | LTN | DESCRIPTION   | DATE      | OWN | APVD |
|     |      | D         |     | ECR-14-003911 | 17MAR2014 | XZ  | TE   |
|     |      | E         |     | ECR-17-003441 | 09MAR2017 | KH  | CT   |
|     |      | F         |     | ECR-18-007382 | 14MAY2018 | TB  | JDG  |
|     |      | G         |     | ECR-19-007806 | 16MAY2019 | FJ  | TE   |

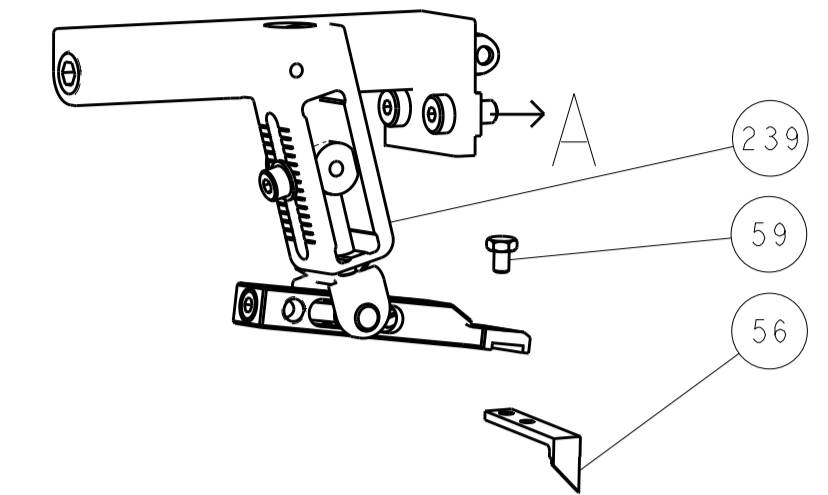
|   |     |     |     |     |             |  |     |
|---|-----|-----|-----|-----|-------------|--|-----|
| 1 | 1   | 1   | 1   | 1   | 2119787-1   | CRIMPER, STABILIZER O PREMIUM          | 258 |
| - | 1   | 1   | 1   | 1   | 238011-2    | BLOCK, CRIMPER SPACER                  | 257 |
| - | 1   | 1   | 1   | 1   | 2119348-2   | SNAIL CAM, STABILIZER CRIMP ADJUSTMENT | 256 |
| - | 2   | 2   | 2   | 2   | 2079844-1   | SPRING PLUNGER, M4                     | 255 |
| - | 1   | 1   | 1   | 1   | 2119347-1   | KNOB, STABILIZER CRIMP ADJUSTMENT      | 254 |
| - | 1   | 1   | 1   | 1   | 18032-1     | SCR, SET, FLT PNT, M3 X 5.0            | 253 |
| - | 1   | -   | 1   | -   | 2119640-1   | PUSH ROD, AIR FEED                     | 250 |
| - | 1   | -   | 1   | -   | 2079988-1   | BUSHING, LCH5-12, MISUMI               | 249 |
| - | 1   | -   | 1   | -   | 2119641-1   | FEED CAM, AIR FEED                     | 248 |
| - | 1   | 1   | 1   | 1   | 2119082-9   | CAM, SNAIL, INSULATION ADJUSTMENT      | 244 |
| - | 1   | 1   | 1   | 1   | 2079764-1   | WASHER, WAVE SPRING, CREST-TO-CREST    | 243 |
| - | 1   | 1   | 1   | 1   | 2119083-1   | RETAINER, INSULATION DIAL              | 242 |
| - | 1   | 1   | 1   | 1   | 7-18023-7   | SCR, SKT HD CAP M3 X 4.0               | 241 |
| - | -   | 1   | -   | 1   | 2119580-1   | MECHANICAL FEED ASSEMBLY               | 239 |
| - | 1   | -   | 1   | -   | 2063440-1   | AIR FEED MODULE                        | 238 |
| - | 2   | -   | 2   | -   | 21045-3     | RING, RETAIN, EXTERN, 3/16 CRESCENT    | 172 |
| - | REF | REF | REF | REF | 994970-2    | COUNTER, MAGNETIC                      | 164 |
| - | 1   | -   | 1   | -   | 240638-1    | SPRING, FEED FINGER                    | 163 |
| - | 1   | -   | 1   | -   | 3-23627-7   | PIN, RETAIN, GRVD, 3/16 X .854         | 137 |
| - | 1   | -   | 1   | -   | 2119799-1   | HOLDER, FEED FINGER, AF                | 136 |
| - | 1   | 1   | 1   | 1   | 1-18028-2   | WASHER, FLAT, REG M4                   | 119 |
| - | 1   | 1   | 1   | 1   | 2119955-1   | ASSY, LUBRICATOR, SIDE FEED            | 113 |
| - | 1   | 1   | 1   | 1   | 2844908-1   | SCREW, LOCKING                         | 99  |
| - | 1   | 1   | 1   | 1   | 2844907-1   | POST, LOCKING                          | 98  |
| - | 1   | 1   | 1   | 1   | 455888-5    | SPACER, CRIMPER                        | 82  |
| - | 1   | 1   | 1   | 1   | 1803607-1   | DOCUMENTATION PACKAGE                  | 71  |
| - | 1   | 1   | 1   | 1   | 2119740-1   | TAG, IDENTIFICATION                    | 67  |
| - | 2   | 2   | 2   | 2   | 2168078-1   | SCREW, DRIVE, RH, RoHS, 2 x .188       | 66  |
| - | 1   | 1   | 1   | 1   | 2168083-2   | SCR, SKT HD CAP, RoHS, M4 X 8.0        | 60  |
| - | 1   | 1   | 1   | 1   | 5-18022-5   | SCR, HEX HD CAP, M4 X 6.0              | 59  |
| - | 1   | 1   | 1   | 1   | 1338685-1   | PAWL, FEED                             | 56  |
| - | 4   | 4   | 4   | 4   | 2168083-3   | SCR, SKT HD CAP, RoHS, M4 X 12.0       | 54  |
| - | 2   | 2   | 2   | 2   | 2-2168083-5 | SCR, SKT HD CAP, RoHS, M4 X 14         | 53  |
| - | 1   | 1   | 1   | 1   | 1803382-2   | HOLD DOWN, SPRING LOADED               | 50  |
| - | 1   | 2   | 1   | 2   | 18023-9     | SCR, SKT HD CAP M4 X 6.0               | 49  |
| - | -   | 1   | -   | 1   | 2119652-1   | FEED CAM, PRE FEED                     | 48  |
| - | -   | 1   | -   | 1   | 2119653-1   | FEED CAM, POST FEED                    | 47  |
| - | 1   | 1   | 1   | 1   | 1803583-9   | APPLICATOR BASIC ASSEMBLY, SF          | 46  |
| - | 1   | 1   | 1   | 1   | 1803515-1   | RAM ASSEMBLY, SF ATLANTIC              | 44  |
| - | 1   | 1   | 1   | 1   | 1803602-1   | SCR, BHSC, RoHS (M8 X 25)              | 41  |
| - | 1   | 1   | 1   | 1   | 3-1752356-4 | SUPPORT, TERMINAL                      | 34  |
| - | 2   | 2   | 2   | 2   | 2079383-5   | SCR, BHSC, RoHS (M4 X 20)              | 33  |
| - | 2   | 2   | 2   | 2   | 2-2844962-4 | SPACER, CYLINDRICAL, STRIP GUIDE       | 30  |
| - | 1   | 1   | 1   | 1   | 2844992-1   | ASSEMBLY, STRIP GUIDE                  | 29  |
| - | 1   | 1   | 1   | 1   | 2119797-1   | SPACER, CRIMPER, SPECIAL               | 28  |
| - | 1   | 1   | 1   | 1   | 1320928-1   | STRIP GUIDE                            | 24  |
| - | 1   | 1   | 1   | 1   | 2168083-2   | SCR, SKT HD CAP, RoHS, M4 X 8.0        | 21  |
| - | 1   | 1   | 1   | 1   | 1-18028-2   | WASHER, FLAT, REG M4                   | 20  |
| - | 1   | 1   | 1   | 1   | 2119533-1   | STRIPPER, SIDE FEED                    | 19  |
| - | 1   | 1   | 1   | 1   | 2119806-1   | INSERT, SHEAR                          | 13  |
| - | 1   | 1   | 1   | 1   | 3-22280-3   | SPRING, COMPRESSION                    | 12  |
| - | 1   | 1   | 1   | 1   | 1-356885-4  | STOP, SHEAR                            | 11  |
| - | 1   | 1   | 1   | 1   | 2119805-1   | SHEAR HOLDER, FRONT                    | 10  |
| - | 1   | 1   | 1   | 1   | 454276-5    | FLOATING SHEAR, FRONT                  | 9   |
| 1 | 2   | 2   | 1   | 1   | 1633922-1   | ANVIL, COMBINATION                     | 8   |
| - | 1   | 1   | 1   | 1   | 240641-1    | SPACER                                 | 7   |
| - | 1   | 1   | 1   | 1   | 2119349-1   | SHEAR DEPRESSOR, STAB. CRIMP ADJ.      | 5   |
| - | 1   | 1   | 1   | 1   | 1-238011-0  | BLOCK, CRIMPER SPACER                  | 4   |
| 1 | 2   | 2   | 1   | 1   | 2119794-1   | CRIMPER, INSUL F PREM, SPECIAL         | 3   |
| - | 1   | 1   | 1   | 1   | 2119797-2   | SPACER, CRIMPER, SPECIAL               | 2   |
| 1 | 2   | 2   | 1   | 1   | 814590-2    | CRIMPER, WIRE F PREMIUM                | 1   |

ATLANTIC VERSION  
 Shown on sheets 1 of 4 & 2 of 4  
 (Pacific version shown on sheets 3 of 4 & 4 of 4)

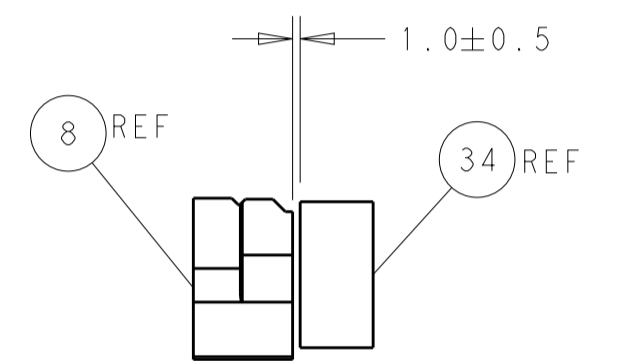
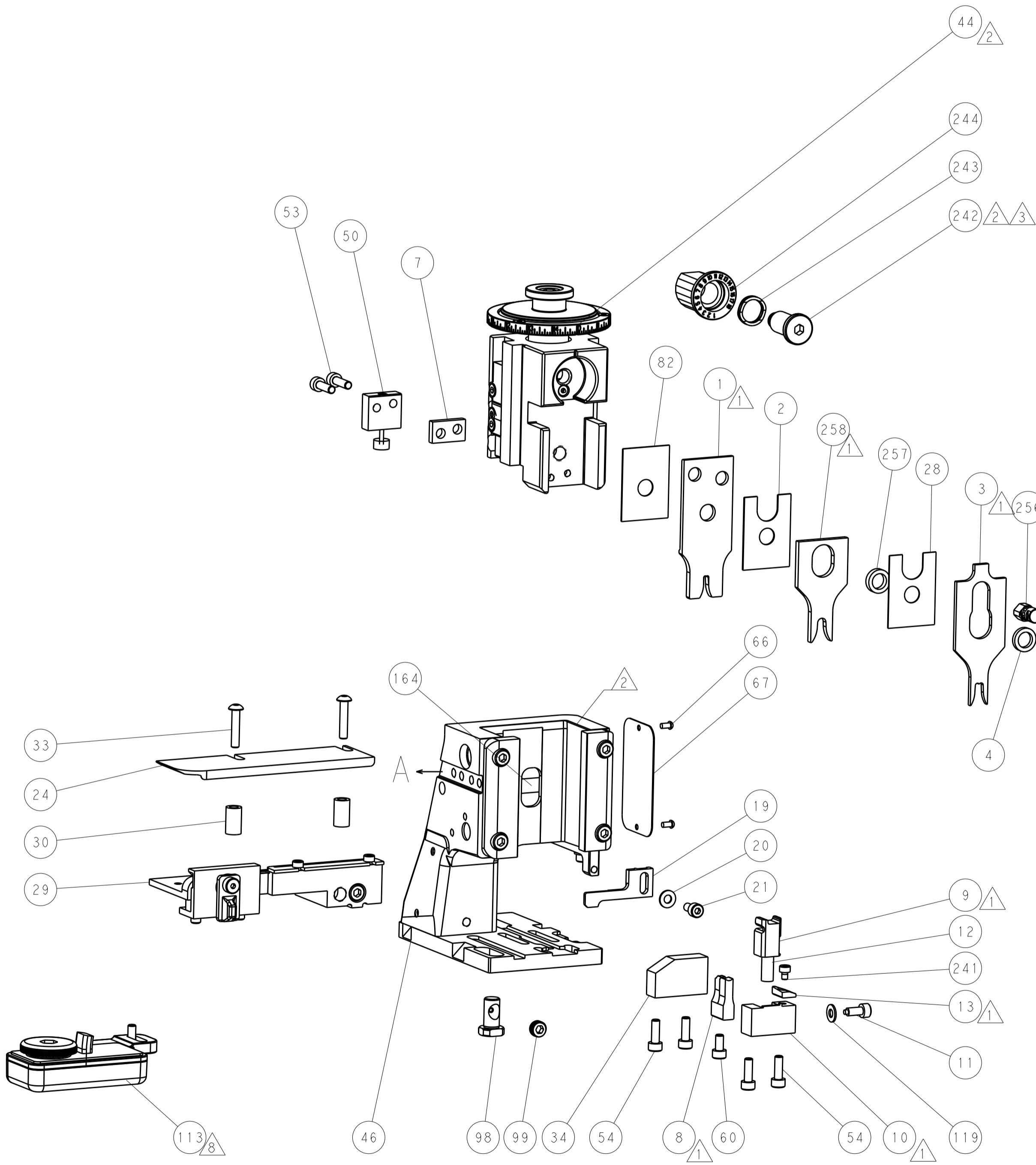
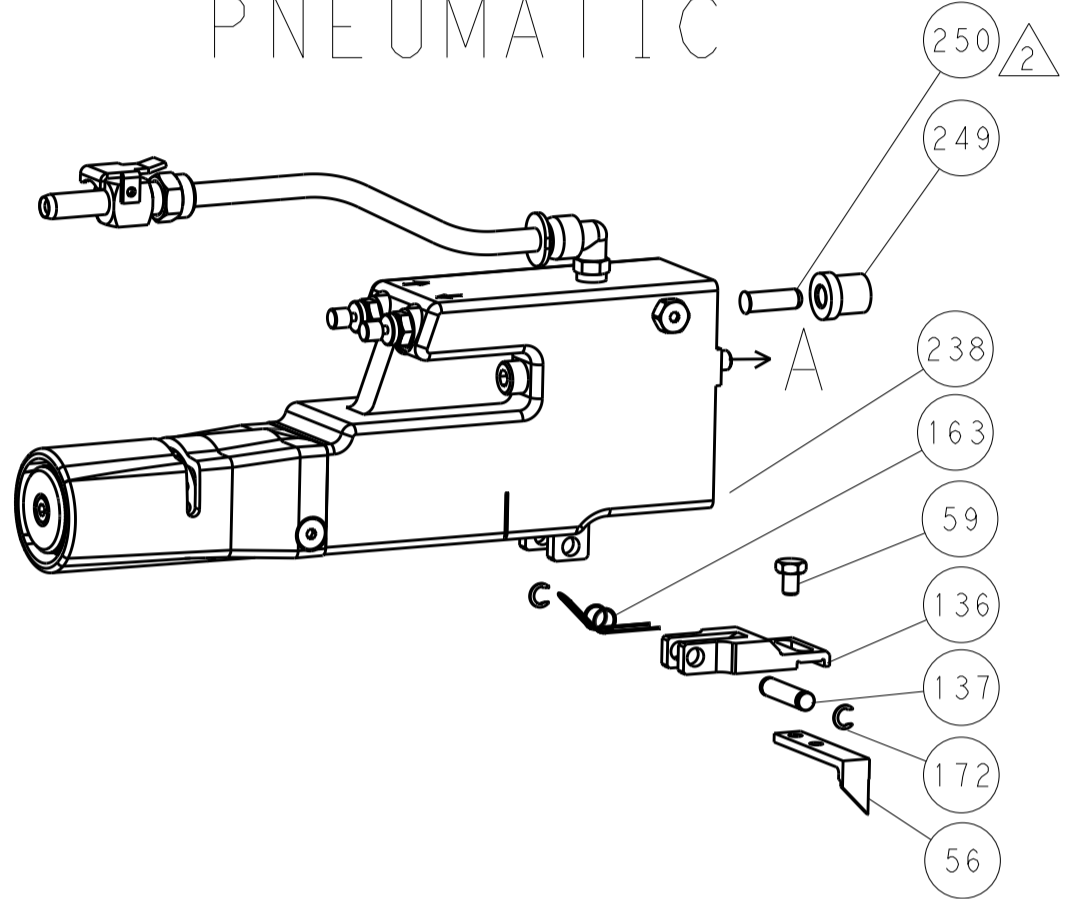
|                |  |  |  |  |  |                                  |  |
|----------------|--|--|--|--|--|----------------------------------|--|
| DIMENSIONS: mm |  | TOLERANCES UNLESS OTHERWISE SPECIFIED: |  | OWN: B. WEAVER 19SEP2011               |  | TE Connectivity                  |  |
| 0 PLC ±        |  | 0.15                                   |  | CHK: G. HOFENER 19SEP2011              |  | Harrisburg, PA 17105-3608        |  |
| 1 PLC ±        |  | 0.25                                   |  | APVD: T. ELBIN 19SEP2011               |  | NAME: Ocean Side Feed Applicator |  |
| 2 PLC ±        |  | 0.38                                   |  | PRODUCT SPEC:                          |  | SIZE: A1                         |  |
| 3 PLC ±        |  | 0.51                                   |  | APPLICATION SPEC:                      |  | CAGE CODE: 00779                 |  |
| 4 PLC ±        |  | 0.64                                   |  | WEIGHT:                                |  | DRAWING NO: C=2151320            |  |
| ANGLES:        |  | FINISH:                                |  | REVISIONS:                             |  | SHEET 1 OF 4                     |  |
| MATERIAL:      |  | FINISH:                                |  | Customer Accessible Production Drawing |  | SCALE: 1:2                       |  |
|                |  |  |  |  |  | REV: G                           |  |

| LOC | DIST | REV | DATE | BY | APPV |
|-----|------|-----|------|----|------|
| A   | 66   |     |      |    |      |
|     |      |     |      |    |      |
|     |      |     |      |    |      |

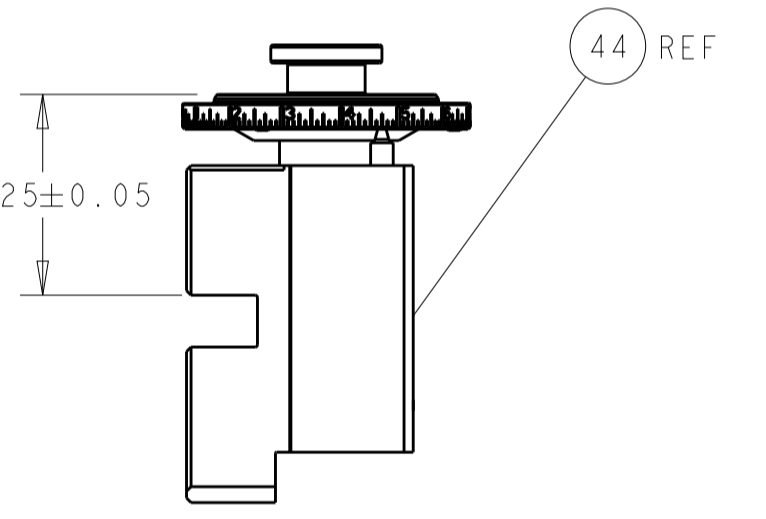
# FEED TYPE MECHANICAL



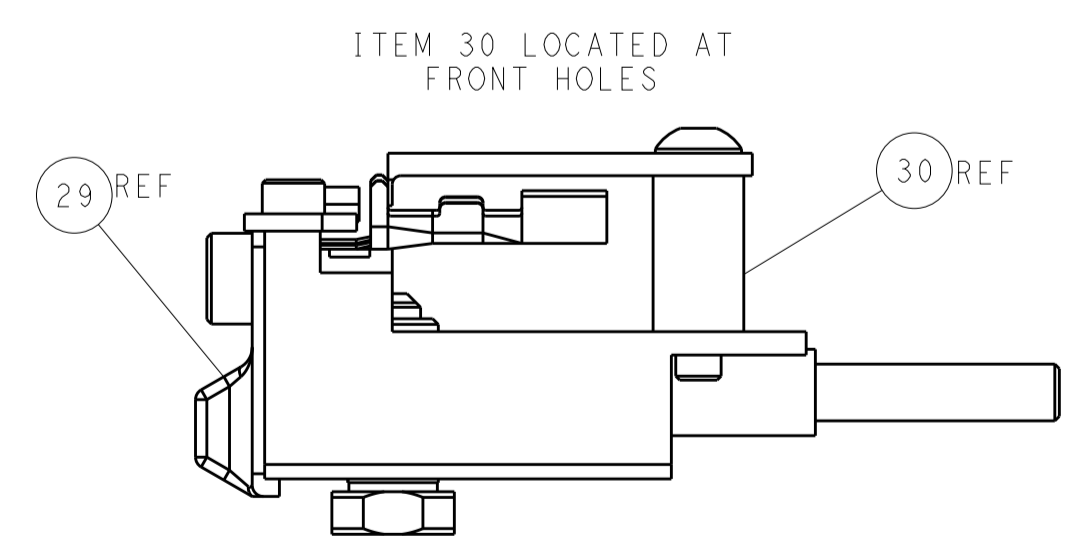
# PNEUMATIC



TERMINAL SUPPORT LOCATION

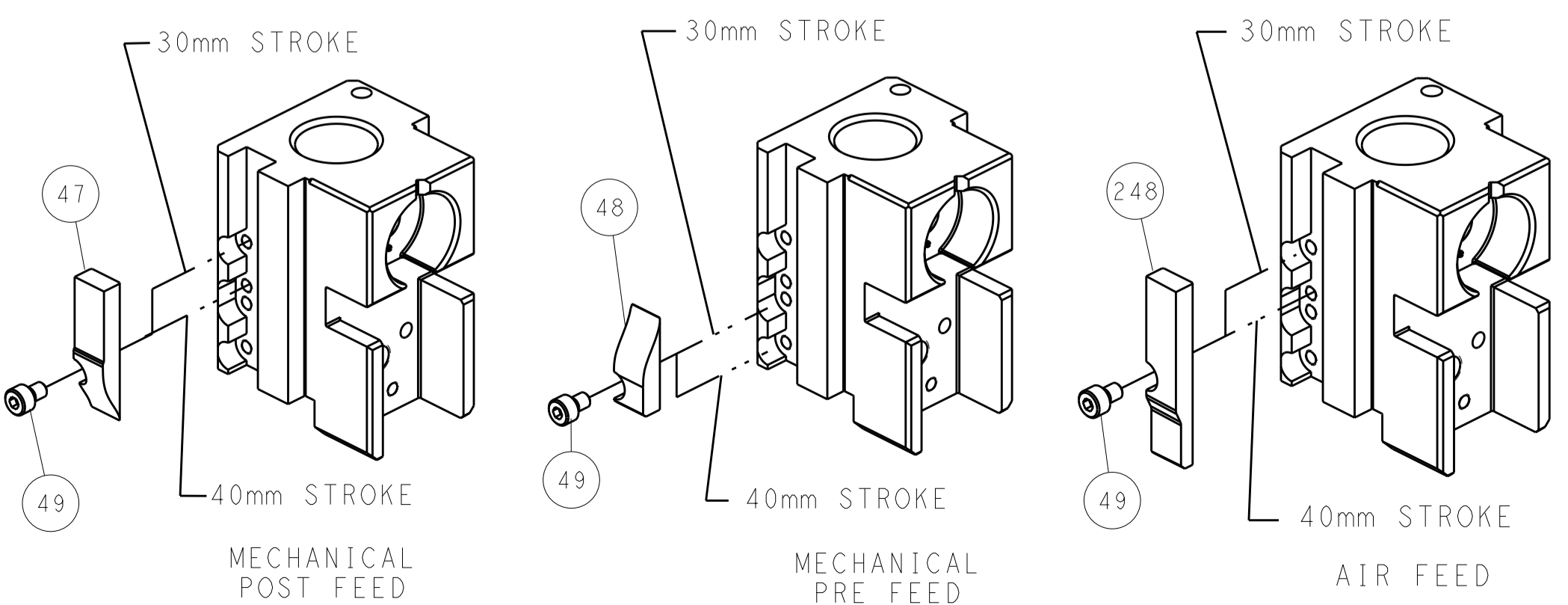


RAM SET-UP



FEED TRACK POSITION GUIDE BY INSULATION BARREL

# CAM POSITIONS

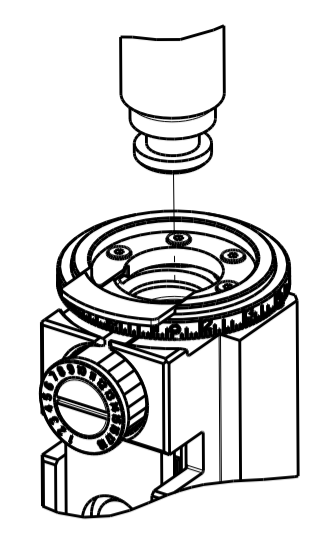


**ATLANTIC VERSION**  
 Shown on sheets 1 of 4 & 2 of 4  
 (Pacific version shown on sheets 3 of 4 & 4 of 4)

|  |         |  |            |                          |                                  |
|--|---------|--|------------|--------------------------|----------------------------------|
| DIMENSIONS:                            |         | TOLERANCES UNLESS OTHERWISE SPECIFIED: |            | OWN: B. WEAVER 19SEP2011 | TE Connectivity                  |
| mm                                     | 0 PLC ± | 1 PLC ±                                | 2 PLC ±    | CHK: G. HOFNER 19SEP2011 | Harrisburg, PA 17105-3608        |
|  | 3 PLC ± | 4 PLC ±                                | ANGLES ±   | APPV: T. ELBIN 19SEP2011 | NAME: Ocean Side Feed Applicator |
| MATERIAL:                              | FINISH: | WEIGHT:                                | SCALE: 1:2 | SIZE: A1                 | CAGE CODE: 00779                 |
|  |         |  |            | DRAWING NO: C=2151320    | RESTRICTED TO: -                 |
| Customer Accessible Production Drawing |         |  |            | SHEET 2 OF 4             | REV G                            |

| PART NUMBER | REVISION | DESCRIPTION              | FEED TYPE  |
|-------------|----------|--------------------------|------------|
| 2-2151320-1 | G        | FINE CRIMP HEIGHT ADJUST | MECHANICAL |
| 2-2151320-2 | G        | FINE CRIMP HEIGHT ADJUST | PNEUMATIC  |
| 7-2151320-7 | A        | CRIMP TOOLING KIT        | -          |

PACIFIC VERSION TERMINATOR  
INTERFACE ADAPTER



| APPLICATOR DATA                      |                |      |
|--------------------------------------|----------------|------|
| CRIMP                                | SIZE           | TYPE |
| WIRE                                 | .100 [2.54 mm] | F    |
| INSUL                                | .180 [4.57 mm] | F    |
| APPLICATOR INSTRUCTIONS<br>408-35042 |                |      |

| TERMINAL DATA: TE TERMINAL           |             | TE CRIMP SPECIFICATION       |             |
|--------------------------------------|-------------|------------------------------|-------------|
| TERMINAL NAME: .140 DIA PIN & SOCKET |             |                              |             |
| WIRE STRIP LENGTH                    |             | INSULATION DIAMETER RANGE    |             |
| 114-1007                             |             | Ø.086-.180 IN [2.18-4.57 mm] |             |
| TERMINAL APPLICATION SPECIFICATION   |             |                              |             |
| TERMINALS APPLIED                    |             |                              |             |
| TE TERMINAL                          | TE TERMINAL | TE TERMINAL                  | TE TERMINAL |
| 925714-1                             | 925715-1    | 61626-1                      | 925851-1    |
| 925714-2                             | 925715-2    | 61626-2                      | 925851-2    |
| 925714-3                             | 925715-3    | 61627-1                      | 794974-1    |
| 925714-4                             | 925715-4    | 61627-2                      |             |
| 925714-8                             | 925715-5    |                              |             |

| WIRE SIZE | CRIMP HEIGHT INCH [mm]      | CRIMP HEIGHT REFERENCE SETTING | STABILIZER SETTING |
|-----------|-----------------------------|--------------------------------|--------------------|
| 14 AWG    | 0.071+/-0.002 [1.80+/-0.05] | 4.9                            | 7                  |
| 2.00mm2   | 0.070+/-0.002 [1.78+/-0.05] | 5.1                            | 6                  |
| 1.50mm2   | 0.063+/-0.002 [1.60+/-0.05] | 6.7                            | 6                  |
| 16 AWG    | 0.061+/-0.002 [1.55+/-0.05] | 7.3                            | 5                  |
| 1.00mm2   | 0.056+/-0.002 [1.42+/-0.05] | 8.9                            | 5                  |
| 18 AWG    | 0.054+/-0.002 [1.37+/-0.05] | 9.5                            | 3                  |
| 0.75mm2   | 0.053+/-0.002 [1.35+/-0.05] | 9.8                            | 3                  |
| 20 AWG    | 0.051+/-0.002 [1.30+/-0.05] | 10.3                           | 3                  |
| 0.50mm2   | 0.051+/-0.002 [1.30+/-0.05] | 10.3                           | 3                  |

**\*WARNING**  
ON INSTALLATION, SET WIRE DISC TO CRIMP HEIGHT REFERENCE SETTING FOR LARGEST WIRE SIZE. CRIMP HEIGHT REFERENCE SETTINGS GREATER THAN THE VALUE SHOWN MAY CAUSE DAMAGE TO THE CRIMP TOOLING. REFER TO THE INSTRUCTION SHEET FOR PROPER SETUP AND ADJUSTMENTS.

- △ RECOMMENDED SPARE PARTS
- △ REFER TO SUPPLIED INSTRUCTION SHEET FOR CLEANING, LUBRICATION AND STORAGE OF APPLICATOR.
- △ APPLY PART NUMBER 2-23419-6 LOCTITE TO THREADS OF ITEM 242.
- △ CRIMP HEIGHT REFERENCE SETTING WAS THE SETTING USED WHEN THE APPLICATOR WAS QUALIFIED AT THE FACTORY. ADJUSTMENT MAY BE NECESSARY WHEN RUNNING APPLICATOR IN THE FIELD.
- 5. UNLESS SPECIFIED OTHERWISE TORQUE VALUES SHALL BE USED PER DOCUMENT, 101-35000.
- △ INSULATION DIA: .149 OR LESS  
STRIP LENGTH: .188-.132  
INSULATION DIA: .150-.180  
STRIP LENGTH: .281-.343
- △ STABILIZER KNOB MUST BE ADJUSTED TO SETTINGS INDICATED (WHICH CORRESPOND TO WIRE CRIMP HEIGHT SETTINGS).
- △ TERMINAL LUBRICANT IS RECOMMENDED.

| LOC | DIST | REV | DATE | BY | APPV |
|-----|------|-----|------|----|------|
| A   | 66   |     |      |    |      |

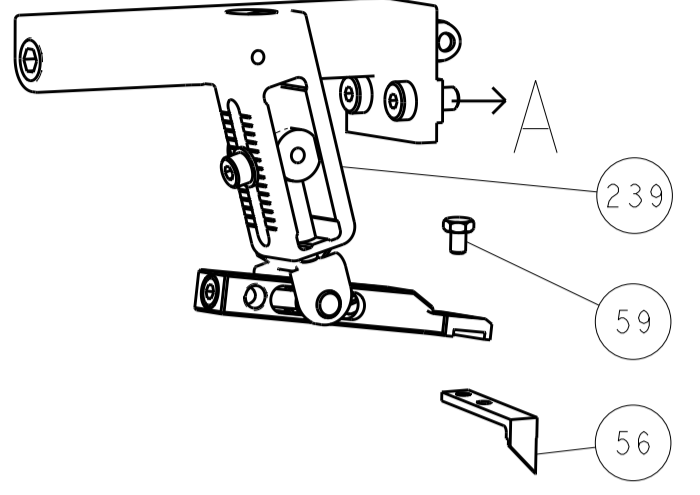
| REV | DATE    | DESCRIPTION | DATE | BY | APPV |
|-----|---------|-------------|------|----|------|
| -   | -       | SEE SHEET 1 | -    | -  | -    |
| -   | 1 1     | 2119787-1   |      |    | 258  |
| -   | 1 1     | 238011-2    |      |    | 257  |
| -   | 1 1     | 2119348-2   |      |    | 256  |
| -   | 2 2     | 2079844-1   |      |    | 255  |
| -   | 1 1     | 2119347-1   |      |    | 254  |
| -   | 1 1     | 18032-1     |      |    | 253  |
| -   | 1 -     | 2119640-1   |      |    | 250  |
| -   | 1 -     | 2079988-1   |      |    | 249  |
| -   | 1 1     | 2119082-9   |      |    | 244  |
| -   | 1 1     | 2079764-1   |      |    | 243  |
| -   | 1 1     | 2119083-1   |      |    | 242  |
| -   | 1 1     | 7-18023-7   |      |    | 241  |
| -   | - 1     | 2119580-1   |      |    | 239  |
| -   | 1 -     | 2063440-1   |      |    | 238  |
| -   | 2 -     | 21045-3     |      |    | 172  |
| -   | REF REF | 994970-2    |      |    | 164  |
| -   | 1 -     | 240638-1    |      |    | 163  |
| -   | 1 -     | 2119641-2   |      |    | 151  |
| -   | 1 1     | 2168083-8   |      |    | 144  |
| -   | 4 4     | 2168083-9   |      |    | 143  |
| -   | - 1     | 2119653-2   |      |    | 142  |
| -   | 1 1     | 1-1803583-0 |      |    | 141  |
| -   | 1 1     | 1803516-1   |      |    | 140  |
| -   | 1 -     | 3-23627-7   |      |    | 137  |
| -   | 1 -     | 2119799-1   |      |    | 136  |
| -   | 1 1     | 1-18028-2   |      |    | 119  |
| -   | 1 1     | 2119955-1   |      |    | 113  |
| -   | 1 1     | 2844908-1   |      |    | 99   |
| -   | 1 1     | 2844907-1   |      |    | 98   |
| -   | 1 1     | 455888-5    |      |    | 82   |
| -   | 1 1     | 1803607-1   |      |    | 71   |
| -   | 1 1     | 2119740-1   |      |    | 67   |
| -   | 2 2     | 2168078-1   |      |    | 66   |
| -   | 1 1     | 5-18022-5   |      |    | 59   |
| -   | 1 1     | 1338685-1   |      |    | 56   |
| -   | 2 2     | 2-2168083-5 |      |    | 53   |
| -   | 1 1     | 1803382-2   |      |    | 50   |
| -   | 1 2     | 18023-9     |      |    | 49   |
| -   | - 1     | 2119652-1   |      |    | 48   |
| -   | 1 1     | 1803602-1   |      |    | 41   |
| -   | 1 1     | 3-1752356-4 |      |    | 34   |
| -   | 2 2     | 2079383-5   |      |    | 33   |
| -   | 2 2     | 2-2844962-4 |      |    | 30   |
| -   | 1 1     | 2844992-1   |      |    | 29   |
| -   | 1 1     | 2119797-1   |      |    | 28   |
| -   | 1 1     | 1320928-1   |      |    | 24   |
| -   | 1 1     | 2168083-2   |      |    | 21   |
| -   | 1 1     | 1-18028-2   |      |    | 20   |
| -   | 1 1     | 2119533-1   |      |    | 19   |
| -   | 1 1     | 2119806-1   |      |    | 13   |
| -   | 1 1     | 3-22280-3   |      |    | 12   |
| -   | 1 1     | 1-356885-4  |      |    | 11   |
| -   | 1 1     | 2119805-1   |      |    | 10   |
| -   | 1 1     | 454276-5    |      |    | 9    |
| -   | 1 1 1   | 1633922-1   |      |    | 8    |
| -   | 1 1     | 240641-1    |      |    | 7    |
| -   | 1 1     | 2119349-1   |      |    | 5    |
| -   | 1 1     | 1-238011-0  |      |    | 4    |
| -   | 1 1 1   | 2119794-1   |      |    | 3    |
| -   | 1 1     | 2119797-2   |      |    | 2    |
| -   | 1 1 1   | 814590-2    |      |    | 1    |

| DIMENSIONS: | TOLERANCES UNLESS OTHERWISE SPECIFIED:                          | DATE      | BY         | APPV     |
|-------------|---|-----------|------------|----------|
| mm          | 0 PLC ±<br>1 PLC ±<br>2 PLC ±<br>3 PLC ±<br>4 PLC ±<br>ANGLES ± | 19SEP2011 | B. WEAVER  | T. ELBIN |
| MATERIAL:   | FINISH:   | DATE      | BY         | APPV     |
|             |   | 19SEP2011 | G. HOFENER |          |

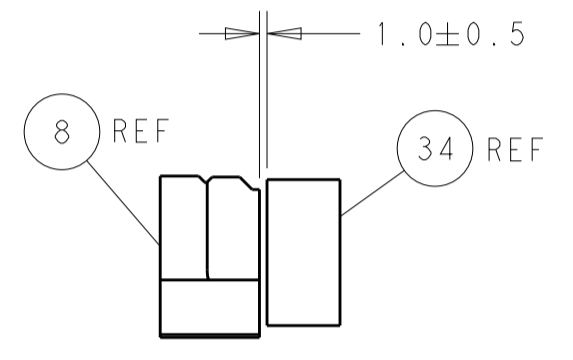
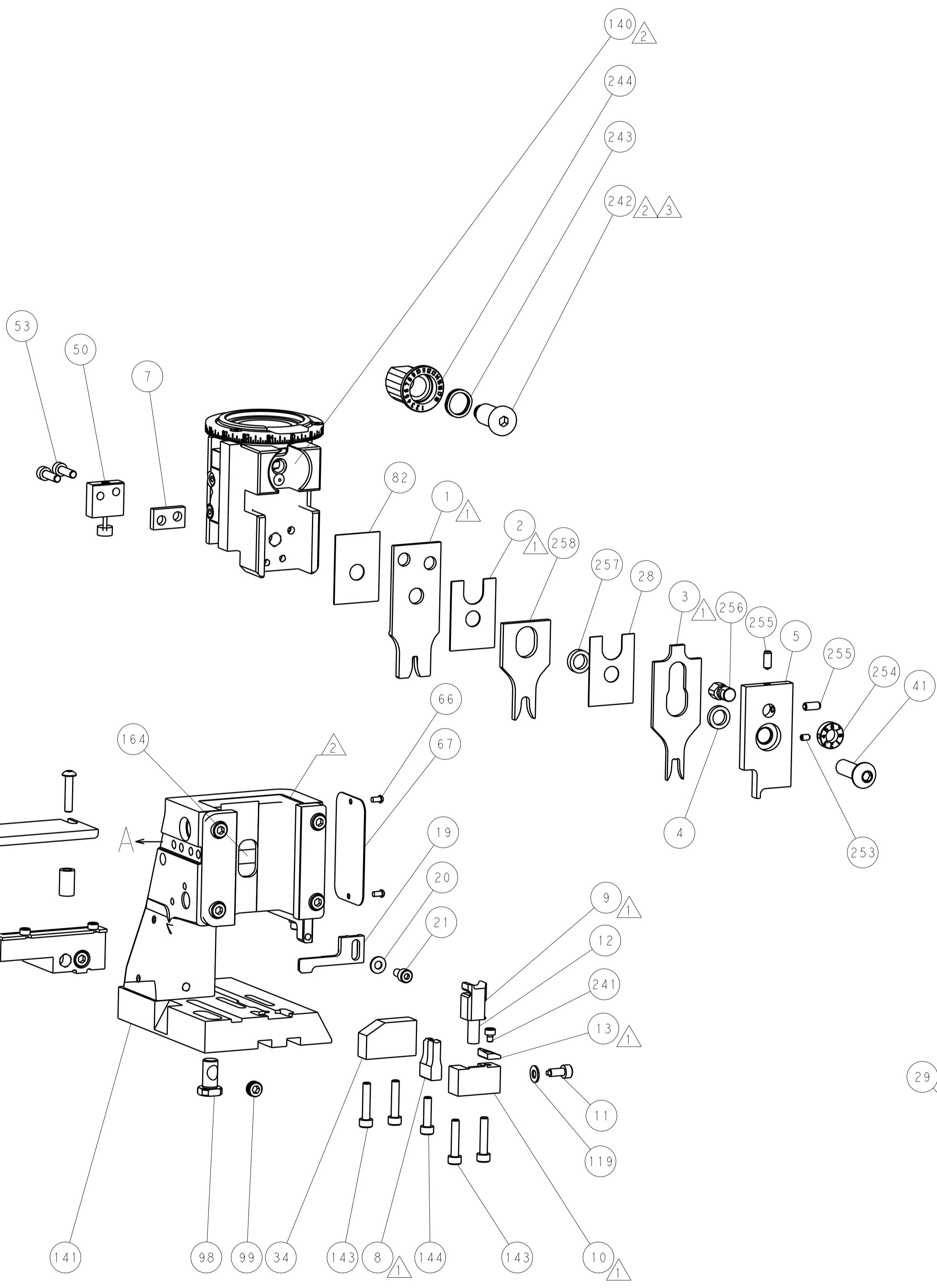
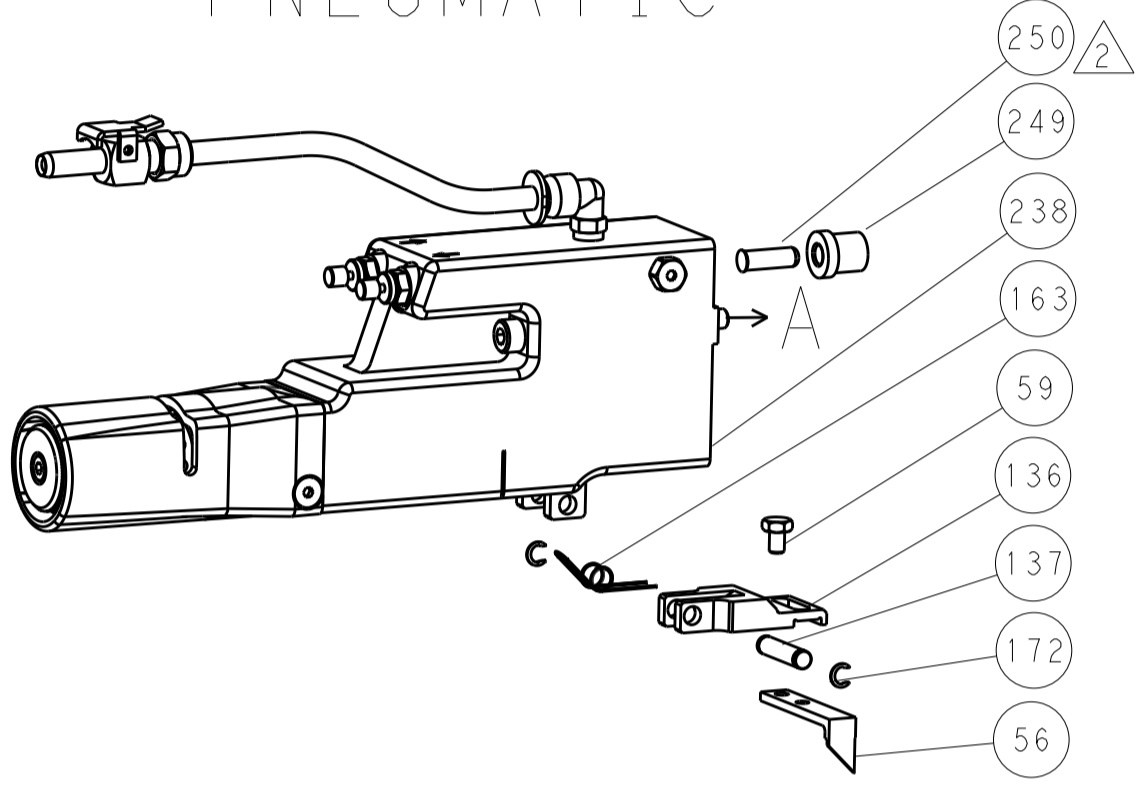
PACIFIC VERSION  
Shown on sheets 3 of 4 & 4 of 4  
(Atlantic version shown on sheets 1 of 4 & 2 of 4)

| LOC           | DIST | REV | DATE | BY | APPD |
|---------------|------|-----|------|----|------|
| A             | 66   |     |      |    |      |
| REVISIONS     |      |     | DATE | BY | APPD |
| - SEE SHEET 1 |      |     |      |    |      |

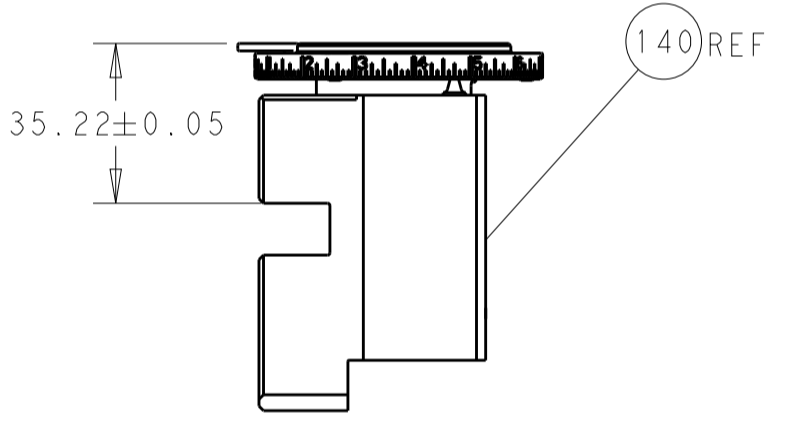
# FEED TYPE MECHANICAL



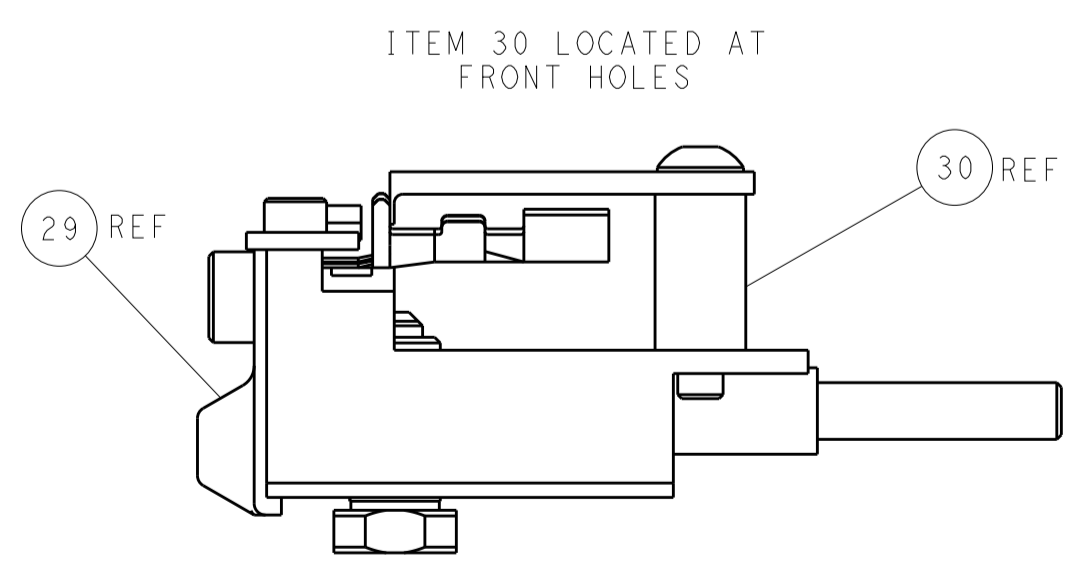
# PNEUMATIC



TERMINAL SUPPORT LOCATION

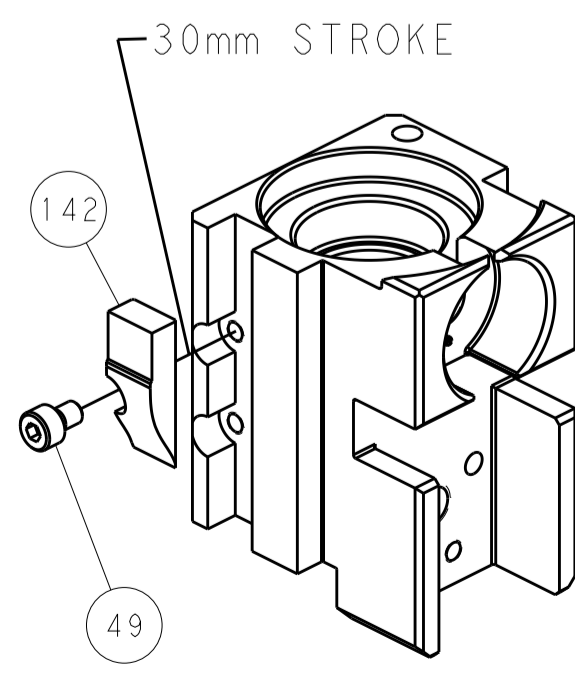


RAM SET-UP

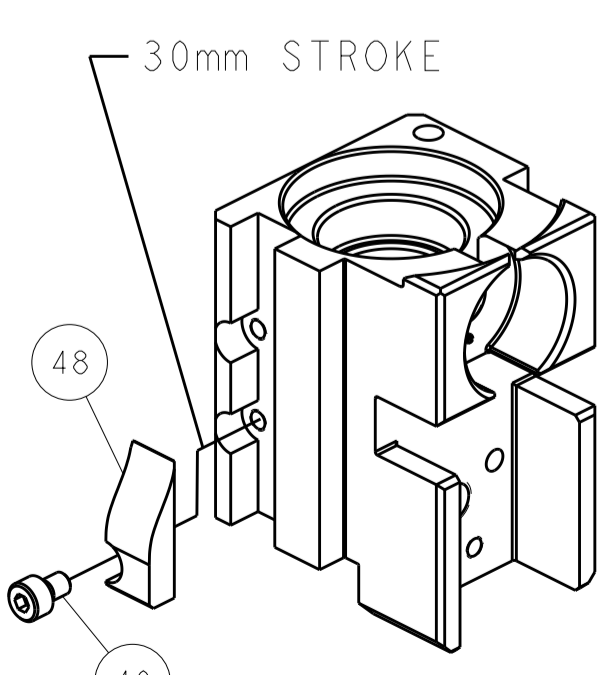


FEED TRACK POSITION GUIDE BY INSULATION BARREL

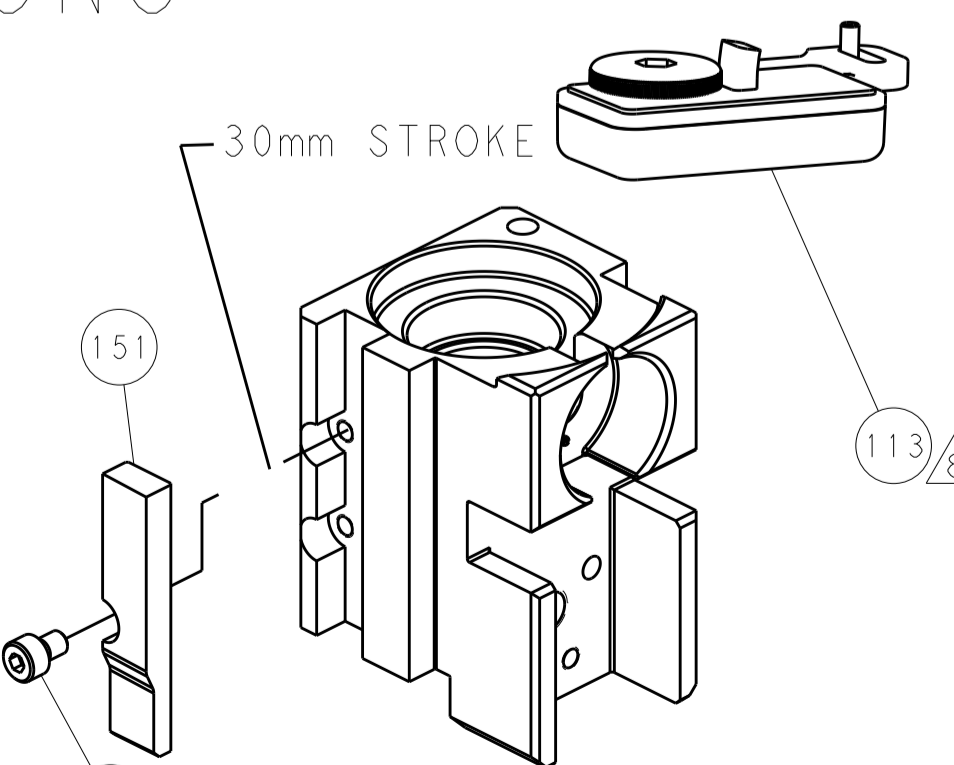
# CAM POSITIONS



MECHANICAL POST FEED



MECHANICAL PRE FEED



AIR FEED

**PACIFIC VERSION**  
 Shown on sheets 3 of 4 & 4 of 4  
 (Atlantic version shown on sheets 1 of 4 & 2 of 4)

|             |         |  |         |                           |  |
|-------------|---------|--|---------|---------------------------|--|
| DIMENSIONS: |         | TOLERANCES UNLESS OTHERWISE SPECIFIED: |         | OWN: B. WEAVER 19SEP2011  | NAME: Ocean Side Feed Applicator               |
| mm          | 0 PLC ± | 1 PLC ±                                | 2 PLC ± | 3 PLC ±                   |  |
| MATERIAL:   |         | FINISH:                                |         | CHK: G. HOFFNER 19SEP2011 | RESTRICTED TO                                  |
|             |         |  |         | APVD: T. ELBIN 19SEP2011  | SIZE: CAGE CODE DRAWING NO: A1 00779 C=2151320 |
|             |         |  |         | PRODUCT SPEC:             | SCALE: 1:2 SHEET 4 OF 4 REV G                  |
|             |         |  |         | APPLICATION SPEC:         | Customer Accessible Production Drawing         |