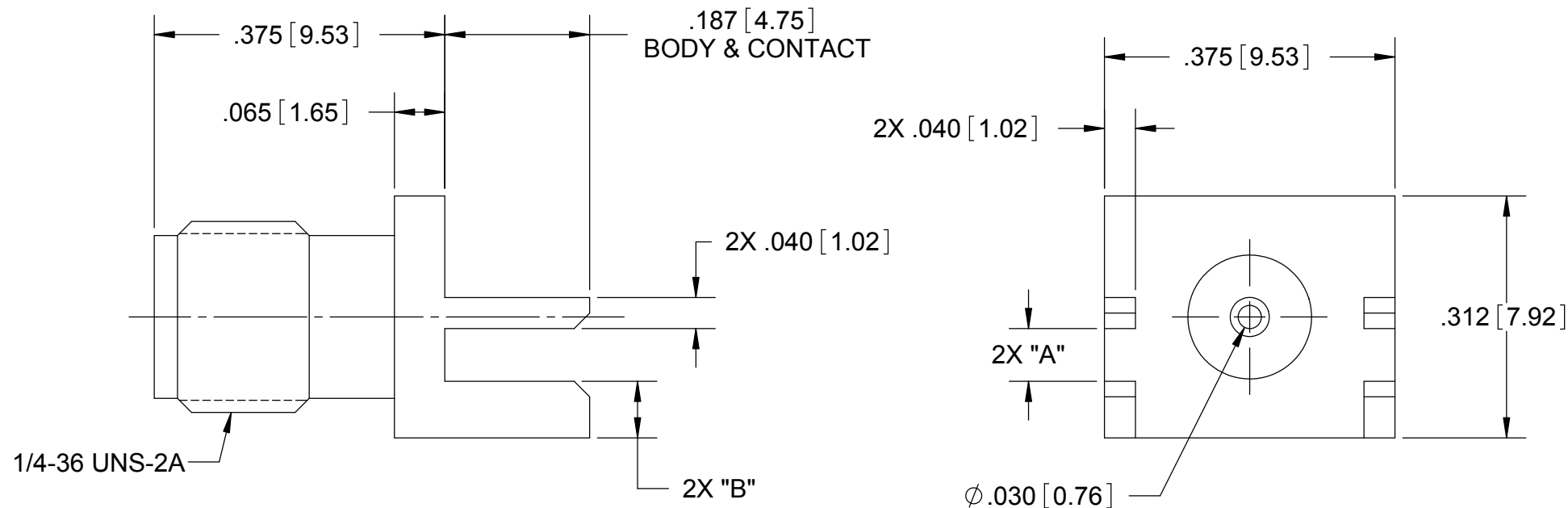


# PRODUCT DATA DRAWING

REVISION HISTORY			
REV	DESCRIPTION	DATE	APPROVED
-	DCN 38497	08/11	PJS



**MATERIAL:**

**BODY:** STAINLESS STEEL PER AMS-5640, ALLOY UNS S30300, TYPE 1

**CONTACT:** BERYLLIUM COPPER PER ASTM B-196, ALLOY UNS C17300, TD04

**INSULATOR:** PTFE PER ASTM D-1710, TYPE I, GRADE 1, CLASS B

**FINISHES:**

**BODY & CONTACT:** GOLD PER ASTM B-488, TYPE II, CODE C, CLASS 1.27 OVER NICKEL PER AMS-QQ-N-290, CLASS 1, .00010" MIN.

**PERFORMANCE:**

**IMPEDANCE:** 50 OHMS

**FREQ. RANGE:** DC-18 GHz

**INSUL. RESIST.:** 5000 MEGOHMS, MIN.

**DWV:** 1000 VRMS

**VSWR:** N/A

PART No.	BOARD THICKNESS	DIMENSION "A"	DIMENSION "B"
2985-6035	.062 (1.57)	.068/.064 (1.67)	.073 (1.85)
2985-6036	.042 (1.07)	.048/.044 (1.16)	.093 (2.36)
2985-6037	.031 (0.79)	.037/.033 (0.88)	.104 (2.64)
2985-6038	.093 (2.36)	.099/.095 (2.46)	.042 (1.07)

**NOTES:**

- FOR A FOOTPRINT RECOMMENDATION SPECIFIC TO YOUR PCB, PLEASE CONTACT US AT [applications@svmicro.com](mailto:applications@svmicro.com)

MATERIAL: SEE NOTES	DIMENSIONS ARE IN INCHES TOLERANCES: FRACTIONAL: ±1/64 ANGULAR: X° ±1'0" X'X' ±15'	UNLESS OTHERWISE SPECIFIED 1) ALL DIMENSIONS ARE AFTER PLATING. 2) BREAK CORNERS & EDGES .005 R. MAX. 3) CHAM. 1ST & LAST THREADS. 4) SURFACE ROUGHNESS 63 √ MIL-STD-10. 5) DIA.'S ON COMMON CENTERS TO BE CONCENTRIC WITHIN T.I.R. 6) REMOVE ALL BURRS	<b>SV Microwave, Inc.</b> 2400 Centrepark West Drive, Suite 100 West Palm Beach, FL 33409 TITLE: <b>SMA JACK END LAUNCH RECEPTACLE</b>
FINISH: SEE NOTES	DECIMAL: X ±.030 .XX ±.010 .XXX ±.005	INTERPRET DIMENSIONS AND TOLERANCES PER ASME Y14.5M - 1994	
SURFACE AREA: N/A	THIRD ANGLE PROJECTION	DRAWN: FED 08/25/11 CHECKED: PJS 08/25/11 APPROVED: PJS 08/25/11 E.M. SIMULATION: N/A	DWG. NO. <b>2985-6035-6038</b> SIZE <b>B</b> CAGE CODE <b>95077</b>
<b>PROPRIETARY</b> THE INFORMATION CONTAINED IN THIS DRAWING IS THE SOLE PROPERTY OF SV MICROWAVE, INC. ANY REPRODUCTION IN PART OR AS A WHOLE WITHOUT THE WRITTEN PERMISSION OF SV MICROWAVE, INC IS PROHIBITED.		SCALE: 5:1	SHEET 1 OF 1