

PART NUMBER	DESCRIPTION	FINISH
1542924-1	SQUARE PIN HEAT SINK (SHEET 1)	N/A
1542924-2	ROUND PIN HEAT SINK (SHEET 2)	IMMERSION NICKEL PLATED 0,076-0,254 MICROMETERS THICK

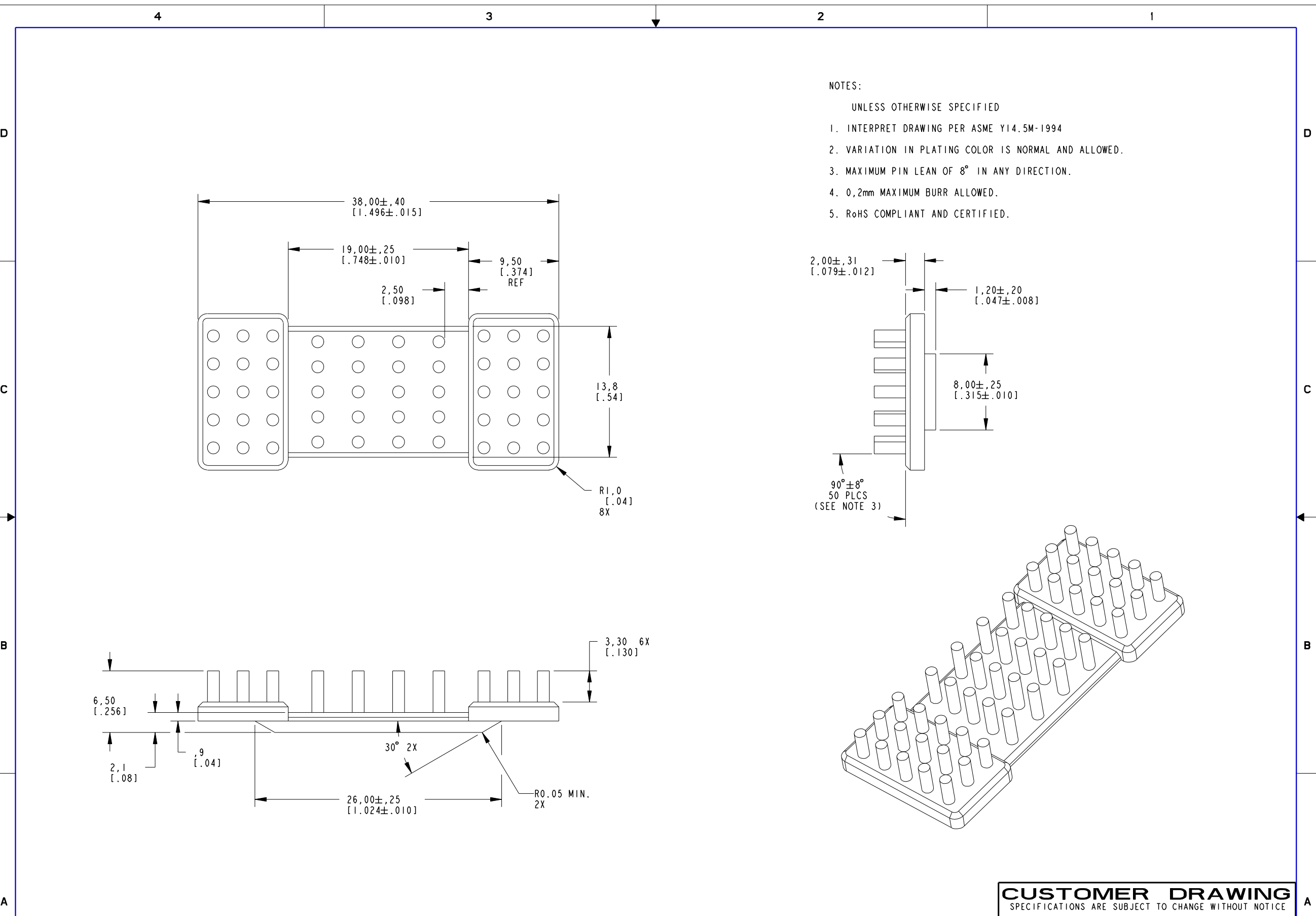
CUSTOMER DRAWING
SPECIFICATIONS ARE SUBJECT TO CHANGE WITHOUT NOTICE

REV.	DESCRIPTION
0	RELEASE OS60-0253-04 E.TAO 10-13-04 APP'D: AM 10-18-04
A	REVISED OS60-0285-04 ETAO 11-17-04 APP'D: AM 11-17-04
B	REVISED OS60-0321 DA 12-22-04 APP'D: AM 12-22-04
C	RELEASED OS60-0003-05 ETAO 1-4-05 APP'D: B.P. 1-10-05
D	REVISED OS60-0103-05 ETAO 4-12-05 APP'D: B.P. 6-15-05
DI	RELEASED ECO-08-007831 ETAO 3-30-08 APP'D: B.P. 4-2-08

<p>Tyco Electronics Norwood, Massachusetts 02062</p>	
<p>UNLESS OTHERWISE SPECIFIED TOLERANCES ARE:</p> <p>X.X ± .5 X.XX ± .25 X.XXX ± .1 ANGLES ± °</p>	<p>DRAWN BY: E.TAO DATE: 10-13-04</p> <p>ENGINEER: A.MICHAUD DATE: 10-18-04</p> <p>FILENAME: C-1542924 PROJECT: PRO-E</p>
<p>MATERIAL: 6060-T5 CAST ALUMINUM</p> <p>FINISH: SEE TABLE</p>	<p>TE PART NO.: SEE TABLE</p> <p>DWG. NO.: C-1542924</p>

<p>DO NOT SCALE</p>	<p>THIRD ANGLE PROJECTION</p>
---------------------	-------------------------------

<p>CONFIDENTIAL PROPERTY OF TYCO ELECTRONICS. NOT TO BE DISCLOSED TO OTHERS. REPRODUCED OR USED FOR ANY PURPOSES EXCEPT AS AUTHORIZED IN WRITING BY AN AUTHORIZED OFFICIAL OF TYCO ELECTRONICS. MUST BE RETURNED TO TYCO ELECTRONICS ON DEMAND, ON COMPLETION OF ORDERS OR OTHER PURPOSES FOR WHICH LEFT.</p>	<p>TITLE: HEATSINK SFP 6.5MM TALL</p>
<p>DIMENSIONS ARE IN: MILLIMETERS</p> <p>SCALE: 4:1</p> <p>SIZE: C</p>	<p>SHEET 1 of 2</p> <p>REV. DI</p>



CUSTOMER DRAWING
 SPECIFICATIONS ARE SUBJECT TO CHANGE WITHOUT NOTICE

REVISION INFO SEE SHEET 1	Tyco Electronics Norwood, Massachusetts 02062		CONFIDENTIAL PROPERTY OF TYCO ELECTRONICS. NOT TO BE DISCLOSED TO OTHERS. REPRODUCED OR USED FOR ANY PURPOSES EXCEPT AS AUTHORIZED IN WRITING BY AN AUTHORIZED OFFICIAL OF TYCO ELECTRONICS. MUST BE RETURNED TO TYCO ELECTRONICS ON DEMAND, ON COMPLETION OF ORDERS OR OTHER PURPOSES FOR WHICH LEFT.		TITLE: HEATSINK SFP 6,5MM TALL	
	UNLESS OTHERWISE SPECIFIED TOLERANCES ARE:	DRAWN BY: E. TAO	DATE: 10-13-04	MATERIAL: 6063-T5 CAST ALUMINUM	SCALE: 4:1	TE PART NO.: 1542924-2
	X, X ± ,5	ENGINEER: A. MICHAUD	DATE: 10-18-04	FINISH: SEE TABLE	SIZE: C	SHEET 2 of 2
	X, XX ± ,25	FILENAME: C-1542924	PROJECT: .	SYSTEM: PRO/E	THIRD ANGLE PROJECTION	DWG. NO.: C-1542924
X, XXX ± .					REV. DI	
ANGLES ± °						