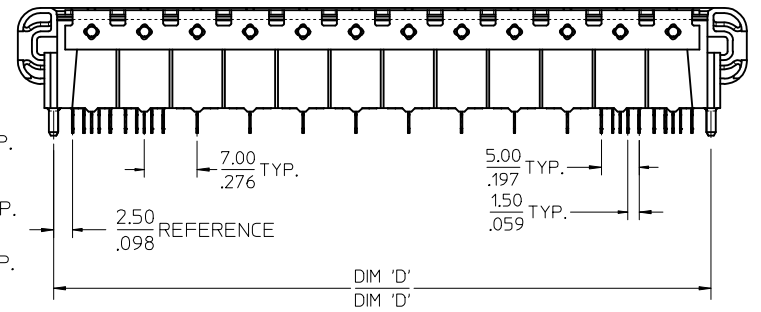
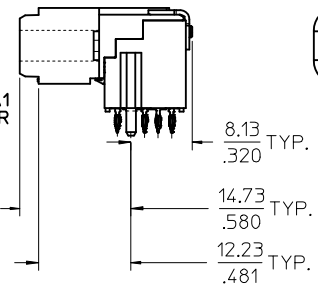
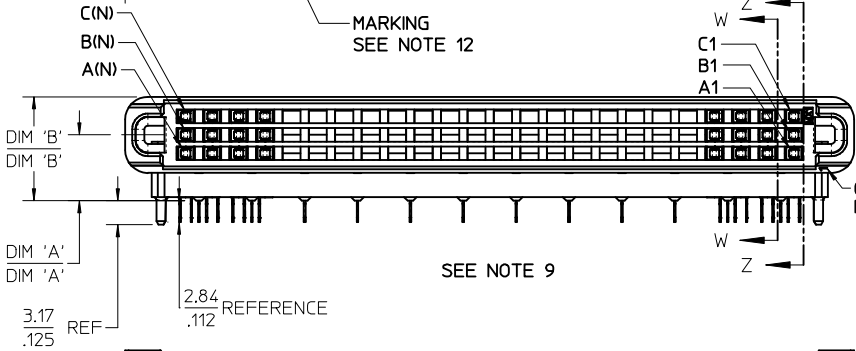
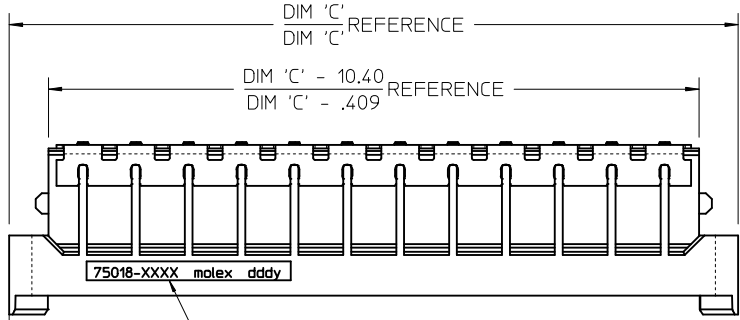


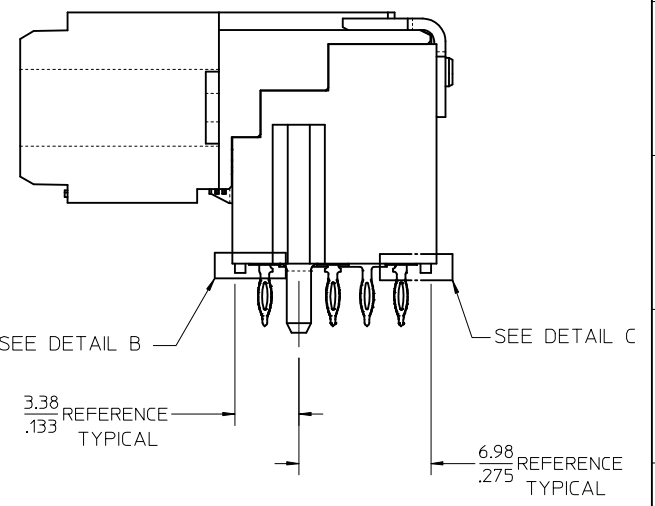
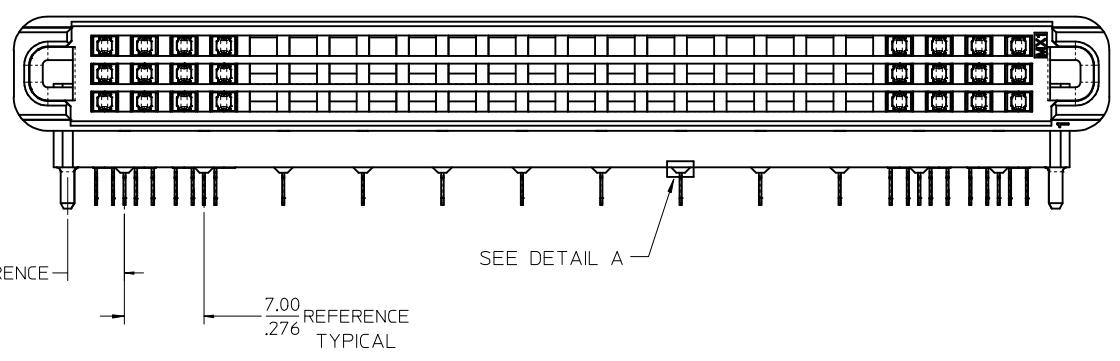
NOTES:

- 1) MATERIALS:
HOUSING - LIQUID CRYSTAL POLYMER, UL94 V-0
WAFER DIELECTRIC - LIQUID CRYSTAL POLYMER, UL94 V-0
CONTACT - COPPER ALLOY
- 2) FINISHES: SEE SHEET 2
- 3) PRODUCT SPECIFICATION: THIS PART CONFORMS TO MOLEX SPECIFICATION PS-75018-001.
- 4) PACKAGING SPECIFICATION: THIS PART TO BE PACKAGED PER SPECIFICATION PK-75020-030.
- 5) APPLICATION SPECIFICATION: THIS PART TO BE APPLIED PER SPECIFICATION PS-75018-001. APPLICATION TOOL AND INSTRUCTIONS PER AS-75018-001.
- 6) MATING INFORMATION
THIS PART MATES WITH 75019-XXXX.
WILL MATE WITH MAXIMUM 1.27mm MIS-ALIGNMENT.
WILL MATE WITH MAXIMUM 0.5° MIS-ALIGNMENT.
- 7) FOR CIRCUIT DESIGNATION SEE SHEET 3
- 8) FOR PCB INFORMATION SEE SHEET 3
- 9) CIRCUITS IN THIS ZONE HAVE BEEN OMITTED TO SIMPLIFY THE MODEL. ACTUAL PRODUCT IS FULLY LOADED WITH TERMINALS.
- 10) APPLICATION TOOLING KEEP OUT AREA. NO COMPONENTS ALLOWED IN THIS AREA.
- 11) CONFORMS TO MOLEX COSMETIC SPECIFICATION PS-45499-002 & PS-45499-003, CLASS C.
- 12) MARKING: PART NUMBER, MOLEX LOGO, DATE CODE
- 13) RECOMMENDED DRILL SIZE 0.66±0.03 TO YIELD FINISHED PLATED THROUGH HOLE OF 0.55±0.05

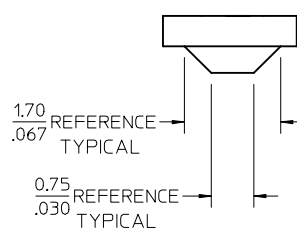


MOD PCB TAIL HOLE DIM EC NO: UCP2014-4737 DRWN: TIBARRA 2014/05/13 CHK: DMP/FF 2014/05/13 APPR: SMILLER 2014/05/12	QUALITY SYMBOLS ▽=0 ▽=0 ▽=0	GENERAL TOLERANCES (UNLESS SPECIFIED)		DIMENSION STYLE MM/IN		SCALE 2:1	DESIGN UNITS METRIC	THIRD ANGLE PROJECTION	
		4 PLACES ± --- ± --- 3 PLACES ± --- ± .005 2 PLACES ± 0.13 ± .01 1 PLACE ± 0.25 ± --- 0 PLACE ± ±		DRAWN BY DATE RWHIPPLE 2013/11/05 CHECKED BY DATE		TITLE PLATEAU HS DOCK FIXED CONNECTOR NO GROUND FINGER			
		ANGULAR ±1/2°		APPROVED BY DATE SMILLER 2013/11/19		DOCUMENT NO. SD-75018-5000			SHEET NO. 1 OF 3
		DRAFT WHERE APPLICABLE MUST REMAIN WITHIN DIMENSIONS		MATERIAL NO. SEE TABLE		THIS DRAWING CONTAINS INFORMATION THAT IS PROPRIETARY TO MOLEX. INCORPORATED AND SHOULD NOT BE USED WITHOUT WRITTEN PERMISSION			

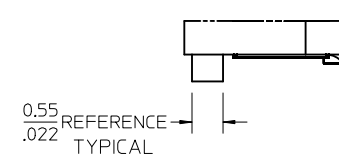
ITEM NUMBER	CIRCUIT SIZE	NO. OF COLUMNS 'N'	PLATING FINISH	CENTERLINE DIMENSION 'A' mm(in)	O/A HEIGHT DIMENSION 'B' mm(in)	O/A LENGTH DIMENSION 'C' mm(in)	PEG TO PEG DIMENSION 'D' mm(in)	FIRST-LAST DIMENSION 'E' mm(in)
75018-5021	144	24	FINISH 1	4.74 (.187)	9.78 (.385)	96.50 (3.799)	87.00 (3.425)	82.00 (3.228)
75018-5022	144	24	FINISH 1	5.74 (.226)	10.78 (.424)	96.50 (3.799)	87.00 (3.425)	82.00 (3.228)
75018-5023	144	24	FINISH 1	8.74 (.344)	13.78 (.543)	96.50 (3.799)	87.00 (3.425)	82.00 (3.228)
75018-5024	108	18	FINISH 1	4.74 (.187)	9.78 (.385)	75.50 (2.972)	66.00 (2.598)	61.00 (2.402)
75018-5025	108	18	FINISH 1	8.74 (.344)	13.78 (.543)	75.50 (2.972)	66.00 (2.598)	61.00 (2.402)
75018-5026	120	20	FINISH 1	4.74 (.187)	9.78 (.385)	82.50 (3.248)	73.00 (2.874)	68.00 (2.677)
75018-5027	108	18	FINISH 1	5.74 (.226)	10.78 (.424)	75.50 (2.972)	66.00 (2.598)	61.00 (2.402)
75018-5029	120	20	FINISH 1	5.74 (.226)	10.78 (.424)	82.50 (3.248)	73.00 (2.874)	68.00 (2.677)
75018-5221	144	24	FINISH 2	4.74 (.187)	9.78 (.385)	96.50 (3.799)	87.00 (3.425)	82.00 (3.228)
75018-5224	108	18	FINISH 2	4.74 (.187)	9.78 (.385)	75.50 (2.972)	66.00 (2.598)	61.00 (2.402)



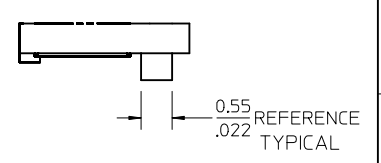
- 1) PLATING FINISHES:
- FINISH 1:
- CONTACT INTERFACE
 - 0.76 MICROMETERS/30 MICROINCHES MINIMUM SELECT GOLD
 - NICKEL UNDERPLATE OVERALL
 - COMPLIANT INTERFACE
 - 0.76 MICROMETERS/30 MICROINCHES MINIMUM SELECT MATTE-TIN OVER
 - NICKEL UNDERPLATE OVERALL
 - HOUSING
 - 3.81 MICROMETERS/150 MICROINCHES MINIMUM NICKEL OVER
 - COPPER UNDERPLATE OVERALL
- FINISH 2:
- CONTACT INTERFACE
 - 0.76 MICROMETERS/30 MICROINCHES MINIMUM SELECT GOLD
 - NICKEL UNDERPLATE OVERALL
 - COMPLIANT INTERFACE
 - 0.76 MICROMETERS/30 MICROINCHES MINIMUM SELECT MATTE-TIN OVER
 - NICKEL UNDERPLATE OVERALL
 - HOUSING
 - 0.10 MICROMETERS/4 MICROINCHES MAXIMUM GOLD OVER
 - 3.81 MICROMETERS/150 MICROINCHES MINIMUM NICKEL OVER
 - COPPER UNDERPLATE OVERALL



DETAIL A
SCALE 15:1

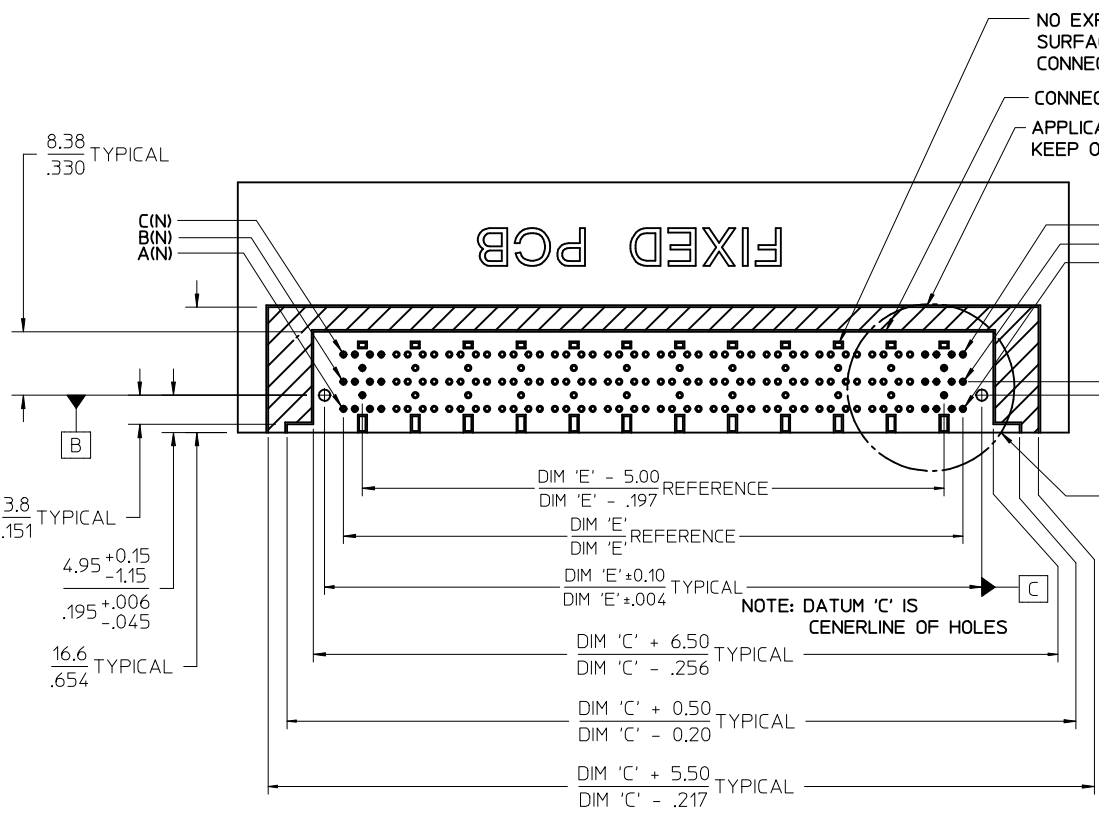


DETAIL B
SCALE 15:1



DETAIL C
SCALE 15:1

SEE SHEET 1 EC NO: UCP2014-4737 DRWNT:IBARRA 2014/05/13 CHKD:MPOFF 2014/05/13 APPR:SMILLER 2014/05/22	QUALITY SYMBOLS ∇=0 ∇=0 ∇=0	GENERAL TOLERANCES (UNLESS SPECIFIED)		DIMENSION STYLE	SCALE	DESIGN UNITS	THIRD ANGLE PROJECTION	
				MM/IN	3:1	METRIC		
				DRAWN BY	DATE	PLATEAU HS DOCK FIXED CONNECTOR NO GROUND FINGER 		
				CHECKED BY	DATE			
		APPROVED BY		DATE	DOCUMENT NO. SD-75018-5000 SHEET NO. 2 OF 3			
		SMILLER		2013/11/19				
		ANGULAR ±1/2°		MATERIAL NO. SEE TABLE				
		DRAFT WHERE APPLICABLE MUST REMAIN WITHIN DIMENSIONS		THIS DRAWING CONTAINS INFORMATION THAT IS PROPRIETARY TO MOLEX INCORPORATED AND SHOULD NOT BE USED WITHOUT WRITTEN PERMISSION				

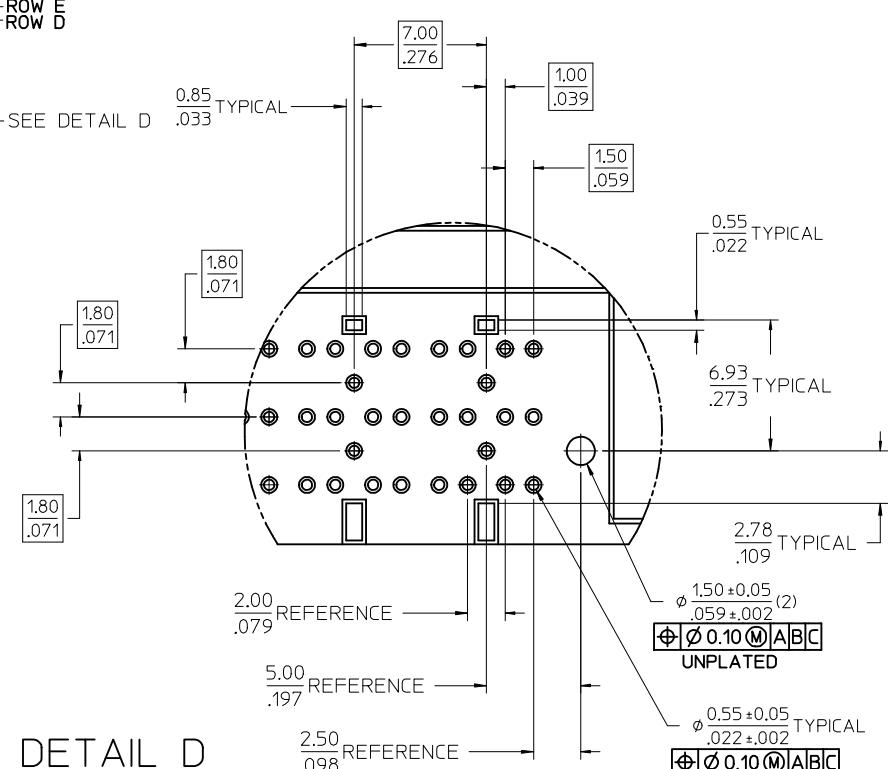


CIRCUIT DESIGNATION

FIRST MATE: HOUSING - SIGNAL GROUND
 SECOND MATE: A1, C1, A(N), C(N) (FOR POWER RETURN)
 THIRD MATE: A2, B2, C2, A(N-1), B(N-1), C(N-1) & ALL OTHERS (A2, C2, A(N-1) & C(N-1) FOR POWER) (ALL OTHERS SIGNAL)
 LAST MATE: B1, B(N) (FOR CARD DETECT)

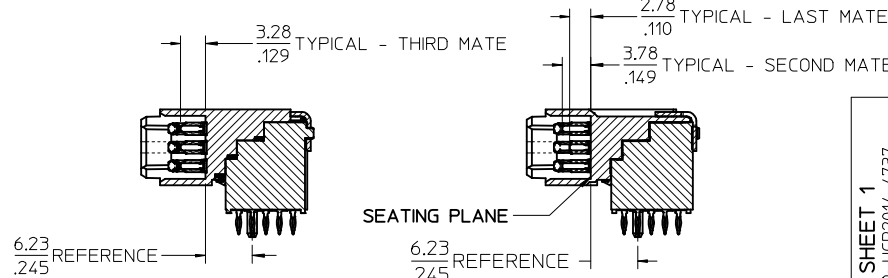
ALL COLUMNS FROM 3 THROUGH (N-2) ARE SUITABLE FOR DIFFERENTIAL PAIRS
 EG: A3-A4, B3-B4, C3-C4, A(N-2)-A(N-3), B(N-2)-B(N-3)

SIGNAL GROUND: ROWS D & E



NOMINAL WIPE - FULL SEATED

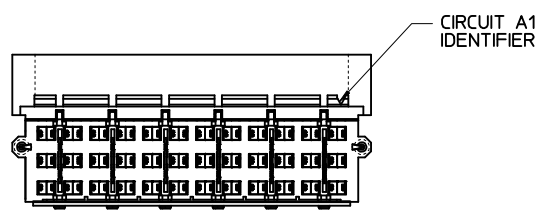
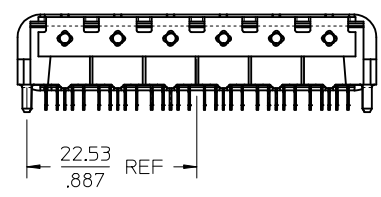
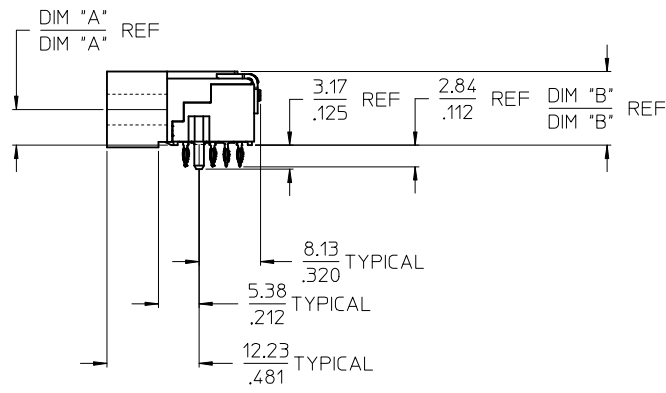
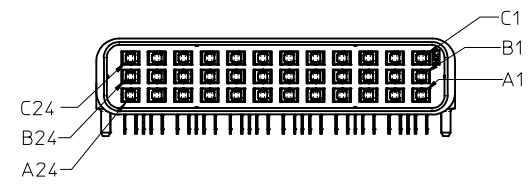
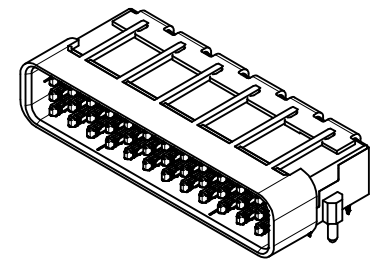
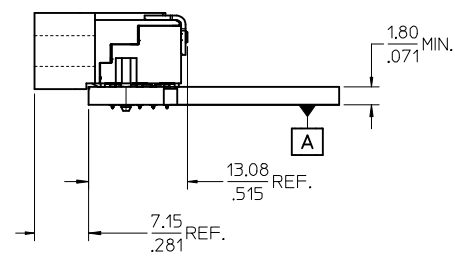
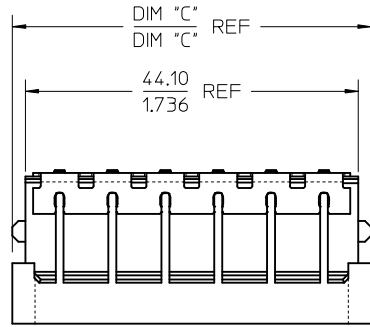
FIRST MATE: 7.2mm
 SECOND MATE: 2.4mm
 THIRD MATE: 1.9mm
 LAST MATE: 1.4mm



DETAIL D
 SCALE 5:1

SEE SHEET 1 EC NO: UCP2014-4737 DRWN: TIBARRA 2014/05/13 CHKD: MPOFF 2014/05/13 APPR: MILLER 2014/05/17	QUALITY SYMBOLS ▽=0 ▽=0 ▽=0	GENERAL TOLERANCES (UNLESS SPECIFIED)		DIMENSION STYLE MM/IN	SCALE 2:1	DESIGN UNITS METRIC	THIRD ANGLE PROJECTION
		mm	INCH	DRAWN BY RWHIPPLE	DATE 2013/11/05	TITLE PLATEAU HS DOCK FIXED CONNECTOR NO GROUND FINGER	molex
4 PLACES ± --- ± ---		3 PLACES ± --- ± .005		CHECKED BY		DATE	
2 PLACES ± 0.13 ± .01		1 PLACE ± 0.25 ± ---		APPROVED BY SMILLER		DATE 2013/11/19	SHEET NO. 3 OF 3
0 PLACE ± ±		ANGULAR ±1/2°		MATERIAL NO. SEE TABLE		DOCUMENT NO. SD-75018-5000	
DRAFT WHERE APPLICABLE MUST REMAIN WITHIN DIMENSIONS		SIZE C		THIS DRAWING CONTAINS INFORMATION THAT IS PROPRIETARY TO MOLEX INCORPORATED AND SHOULD NOT BE USED WITHOUT WRITTEN PERMISSION			

ITEM NUMBER	CIRCUIT SIZE	NO. OF COLUMNS 'N'	PLATING FINISH	CENTERLINE DIMENSION 'A' mm(in)	O/A HEIGHT DIMENSION 'B' mm(in)	O/A LENGTH DIMENSION 'C' mm(in)	PEG TO PEG DIMENSION 'D' mm(in)	FIRST-LAST DIMENSION 'E' mm(in)
75018-5100	72	12	FINISH 1	4.74 (.187)	9.78 (.385)	47.50 (1.870)	45.00 (1.722)	40.00 (1.575)
75018-6100	72	12	FINISH 2	4.74 (.187)	9.78 (.385)	47.50 (1.870)	45.00 (1.722)	40.00 (1.575)



- NOTES:
- 1) MATERIALS:
HOUSING - LIQUID CRYSTAL POLYMER, UL94 V-0
WAFER DIELECTRIC - LIQUID CRYSTAL POLYMER, UL94 V-0
CONTACT - COPPER ALLOY
 - 2) FINISHES: SEE SHEET 2
 - 3) PRODUCT SPECIFICATION: THIS PART CONFORMS TO MOLEX SPECIFICATION PS-75018-001.
 - 4) PACKAGING SPECIFICATION: THIS PART TO BE PACKAGED PER SPECIFICATION PK-75020-030.
 - 5) APPLICATION SPECIFICATION: THIS PART TO BE APPLIED PER SPECIFICATION PS-75018-001, APPLICATION TOOL AND INSTRUCTIONS PER AS-75018-001.
 - 6) MATING INFORMATION
THIS PART MATES WITH 75019-XXXX.
WILL MATE WITH MAXIMUM 1.27mm MIS-ALIGNMENT.
WILL MATE WITH MAXIMUM 0.5° MIS-ALIGNMENT.
 - 7) FOR CIRCUIT DESIGNATION SEE SHEET 3
 - 8) FOR PCB INFORMATION SEE SHEET 3
 - 9) CIRCUITS IN THIS ZONE HAVE BEEN OMITTED TO SIMPLIFY THE MODEL. ACTUAL PRODUCT IS FULLY LOADED WITH TERMINALS.
 - 10) APPLICATION TOOLING KEEP OUT AREA, NO COMPONENTS ALLOWED IN THIS AREA.
 - 11) CONFORMS TO MOLEX COSMETIC SPECIFICATION PS-45499-002 & PS-45499-003, CLASS C.
 - 12) MARKING: PART NUMBER, MOLEX LOGO, DATE CODE
 - 13) RECOMMENDED DRILL SIZE 0.66±0.03 TO YIELD FINISHED PLATED THROUGH HOLE OF 0.55±0.005

INITIAL RELEASE EC NO: UCP2015-0969 DRAWN BY: RWHIPPLE 2014/09/09 CHKD: TIBARRA 2014/09/09 APPR: SMILLER 2014/09/22	QUALITY SYMBOLS ▽=0 ▽=0 ▽=0	GENERAL TOLERANCES (UNLESS SPECIFIED)		DIMENSION STYLE MM/IN		SCALE 2:1	DESIGN UNITS METRIC	THIRD ANGLE PROJECTION	
		4 PLACES ± --- ± ---	3 PLACES ± --- ± .005	2 PLACES ± 0.13 ± .01	1 PLACE ± 0.25 ± ---	0 PLACE ± ±	DRAWN BY DATE RWHIPPLE 2014/09/09		CHECKED BY DATE TIBARRA 2014/09/09
A	REV	ANGULAR ±1/2°		MATERIAL NO.		DOCUMENT NO.		SHEET NO.	
		DRAFT WHERE APPLICABLE MUST REMAIN WITHIN DIMENSIONS		SEE TABLE		SD-75018-5100		1 OF 2	
THIS DRAWING CONTAINS INFORMATION THAT IS PROPRIETARY TO MOLEX INCORPORATED AND SHOULD NOT BE USED WITHOUT WRITTEN PERMISSION									

1) PLATING FINISHES:

FINISH 1:

CONTACT INTERFACE

0.76 MICROMETERS/30 MICROINCHES MINIMUM SELECT GOLD
NICKEL UNDERPLATE OVERALL

COMPLIANT INTERFACE

0.76 MICROMETERS/30 MICROINCHES MINIMUM SELECT MATTE-TIN OVER
NICKEL UNDERPLATE OVERALL

HOUSING

3.81 MICROMETERS/150 MICROINCHES MINIMUM NICKEL OVER
COPPER UNDERPLATE OVERALL

FINISH 2:

CONTACT INTERFACE

0.76 MICROMETERS/30 MICROINCHES MINIMUM SELECT GOLD
NICKEL UNDERPLATE OVERALL

COMPLIANT INTERFACE

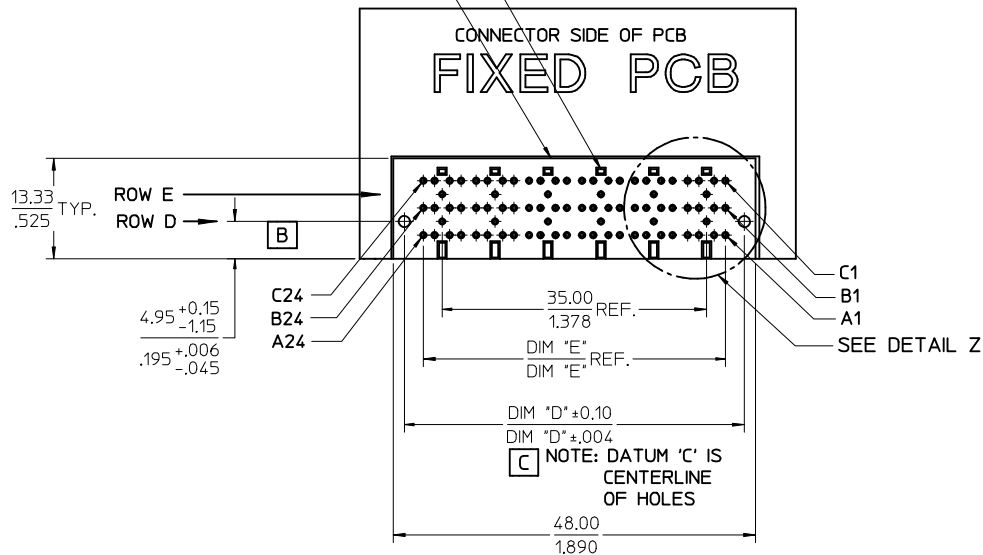
0.76 MICROMETERS/30 MICROINCHES MINIMUM SELECT MATTE-TIN OVER
NICKEL UNDERPLATE OVERALL

HOUSING

0.10 MICROMETERS/4 MICROINCHES MAXIMUM GOLD OVER
3.81 MICROMETERS/150 MICROINCHES MINIMUM NICKEL OVER
COPPER UNDERPLATE OVERALL

NO EXPOSED TRACES ON
SURFACE OF PCB IN
CONNECTOR STAND OFF LOCATIONS

CONNECTOR KEEP OUT AREA



SEE SHEET 1 EC NO: UCP2015-0969 DRAWN: RWHIPPLE 2014/09/09 CHKD: TIBARRA 2014/09/09 APPR: SMILLER 2014/09/22	QUALITY SYMBOLS ▽=0 ▽=0 ▽=0	GENERAL TOLERANCES (UNLESS SPECIFIED)		DIMENSION STYLE MM/IN	SCALE 2:1	DESIGN UNITS METRIC	THIRD ANGLE PROJECTION	
		4 PLACES ± --- ± ---	3 PLACES ± --- ± .005	DRAWN BY RWHIPPLE	DATE 2014/09/09	TITLE PLATEAU HS DOCK FIXED CONNECTOR NO GROUND FINGER		
		2 PLACES ± 0.13 ± .01	1 PLACE ± 0.25 ± ---	CHECKED BY TIBARRA	DATE 2014/09/09			
		0 PLACE ± ±	ANGULAR ±1/2°		APPROVED BY SMILLER	DATE 2014/09/22	DOCUMENT NO. SD-75018-5100	
DRAFT WHERE APPLICABLE MUST REMAIN WITHIN DIMENSIONS		MATERIAL NO.	SEE TABLE		SHEET NO. 2 OF 2			
THIS DRAWING CONTAINS INFORMATION THAT IS PROPRIETARY TO MOLEX INCORPORATED AND SHOULD NOT BE USED WITHOUT WRITTEN PERMISSION								