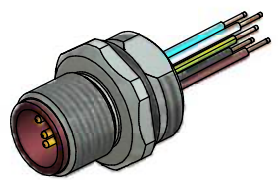


Contact assignment:

- 1 ■ brown
- 2 ■ white
- 3 ■ blue
- 4 ■ black
- 5 ■ green-yellow



Technical specification:

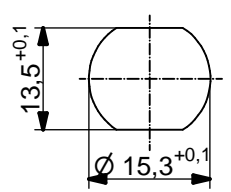
Rated voltage: IEC 61076-2-101	4pos 5pos 250 V 60 V
Current rating: IEC 61076-2-101	4 A at 40°C
Insulation resistance: IEC 60512	>=100 MΩ
Pollution degree: IEC 60664-1	3/2
Degree of protection: IEC 60529	IP 67, in mated condition
Temperature range: IEC 60664-1	+100°C - 30.000h +125°C - 8.000h +150°C - 2.000h
Mating cycles: IEC 60512-9a	>=100

Materials:

Contact:	CuZn
Contact plating:	Nickel, gold plated
Contact carrier:	PBT GF, UL 94
Sealing:	FPM
Socket housing:	CuZn, nickel plated
Grouting:	Polyurethane-resin, UL 94

Installation specification:

recommended torque:	1-1,2 Nm
Conec installation tool:	Torque wrench: 36-000200 Insert across flats 17: 36-000230



Minimum wall thickness 1,5mm,
alternativ panel cut-out d=15,3

Part no:	Description:	Pos	Length L:	Wire:
43-01085	SAL - HT - 12 - FS4 - 0,5 - 9	4	0,5m	Copolymer, UL AWG 24
43-xxxxx	SAL - HT - 12 - FS4 - ... - 9	4	x	
43-01087	SAL - HT - 12 - FS5 - 0,5 - 9	5	0,5m	
43-xxxxx	SAL - HT - 12 - FS5 - ... - 9	5	x	

DO NOT ALTER CAD DRAWING BY HAND	Directive 2002/95/EC RoHS compliant	Index: b 02.09.10 fro Ä3696 specification of wires changed, datasheet revised	dim. in mm	title: Male socket M12x1 with wire, frontmounting, HT, PG9									
		tolerance of wire: L ≤ 0,5m: L + 20mm L > 0,5m: L + 4%			<table border="1" style="width: 100%; border-collapse: collapse;"> <tr> <td style="width: 30px;"></td> <td style="width: 30px;">date</td> <td style="width: 30px;">name</td> </tr> <tr> <td>drawn</td> <td>01.03.07</td> <td>Fromm</td> </tr> <tr> <td>appd.</td> <td>01.03.07</td> <td>Mankopf</td> </tr> </table>		date	name	drawn	01.03.07	Fromm	appd.	01.03.07
			date		name								
		drawn	01.03.07		Fromm								
appd.	01.03.07	Mankopf											
THIS DRAWING MAY NOT BE COPIED OR REPRODUCED IN ANY WAY, AND MAY NOT BE PASSED ON TO A THIRD PARTY WITHOUT WRITTEN PERMISSION. OWNERSHIP AND COPYRIGHT OF CONEC GmbH		dwg no: 43K1A329											
			part no:										