

## Carbon Monoxide Gas Sensor(MQ7) (SKU:SEN0132)

---



### Contents

- [1 Introduction](#)
  - [1.1 Specification](#)
- [2 Pin Definition](#)
- [3 Connection Diagram](#)
- [4 Sample Code](#)

### Introduction

The MQ7 is a simple-to-use Carbon Monoxide (CO) sensor suitable for sensing CO concentrations in the air. It can detect CO-gas concentrations anywhere from 20 to 2000ppm. The sensitivity can be adjusted by the potentiometer.

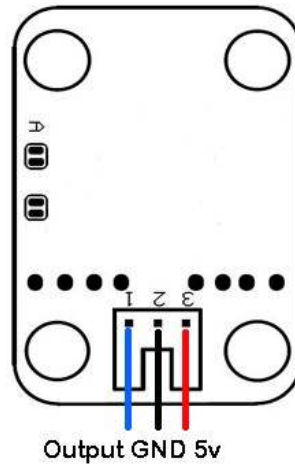
### Specification

- Power supply needs: 5V
- Interface type: Analog
- Pin Definition: 1-Output 2-GND 3-VCC
- High sensitivity to carbon monoxide

- Fast response
- Stable and long life
- Size: 40x20mm

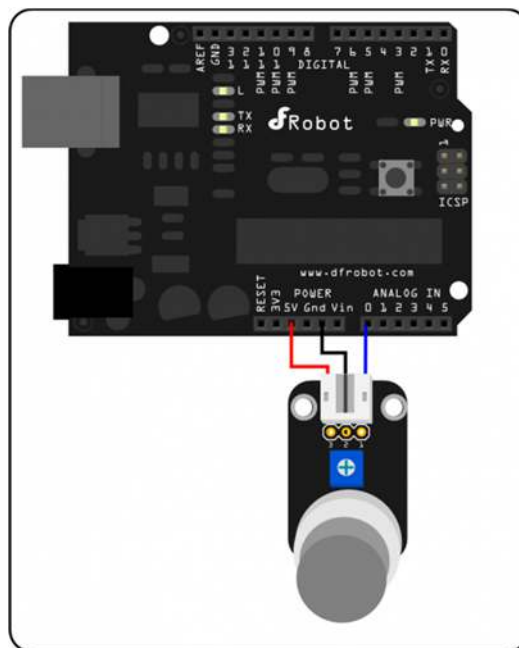
### Pin Definition

1. Signal Output
2. GND
3. Power



Analog Sensor Pin Definition

### Connection Diagram



Analog sensor connection diagram

## Sample Code

```
///  
//Arduino Sample Code  
void setup()  
{  
  Serial.begin(9600); //Set serial baud rate to 9600 bps  
}  
void loop()  
{  
  int val;  
  val=analogRead(0); //Read Gas value from analog 0  
  Serial.println(val,DEC); //Print the value to serial port  
  delay(100);  
}
```