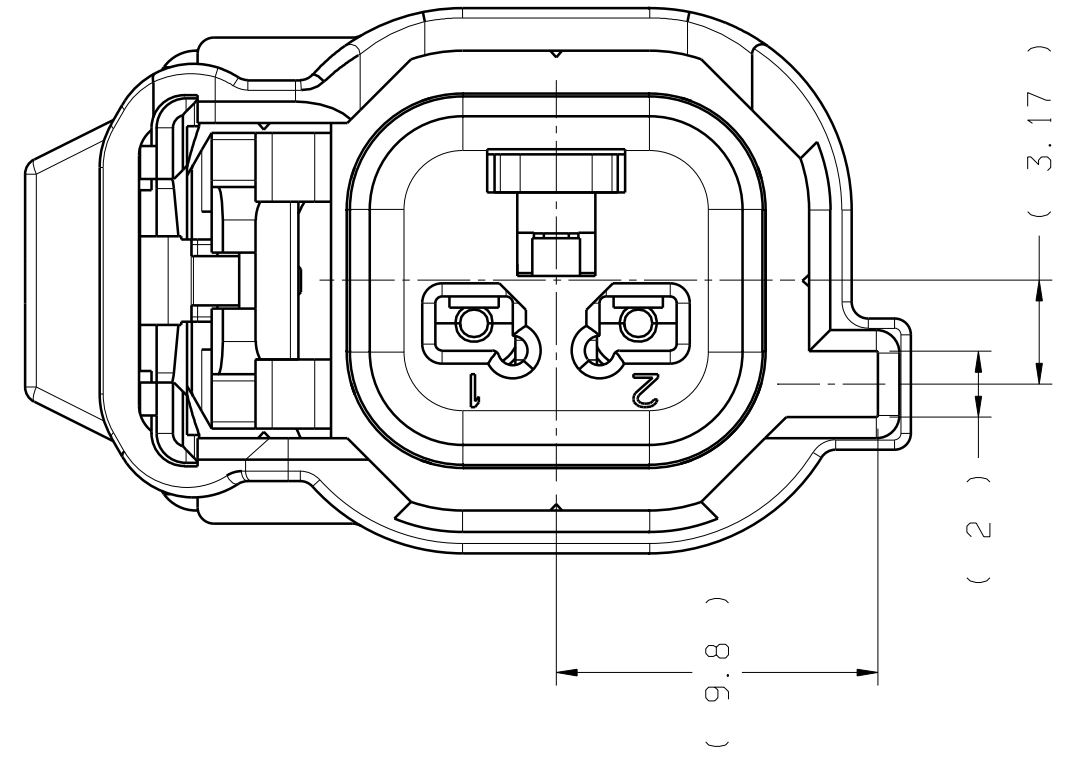
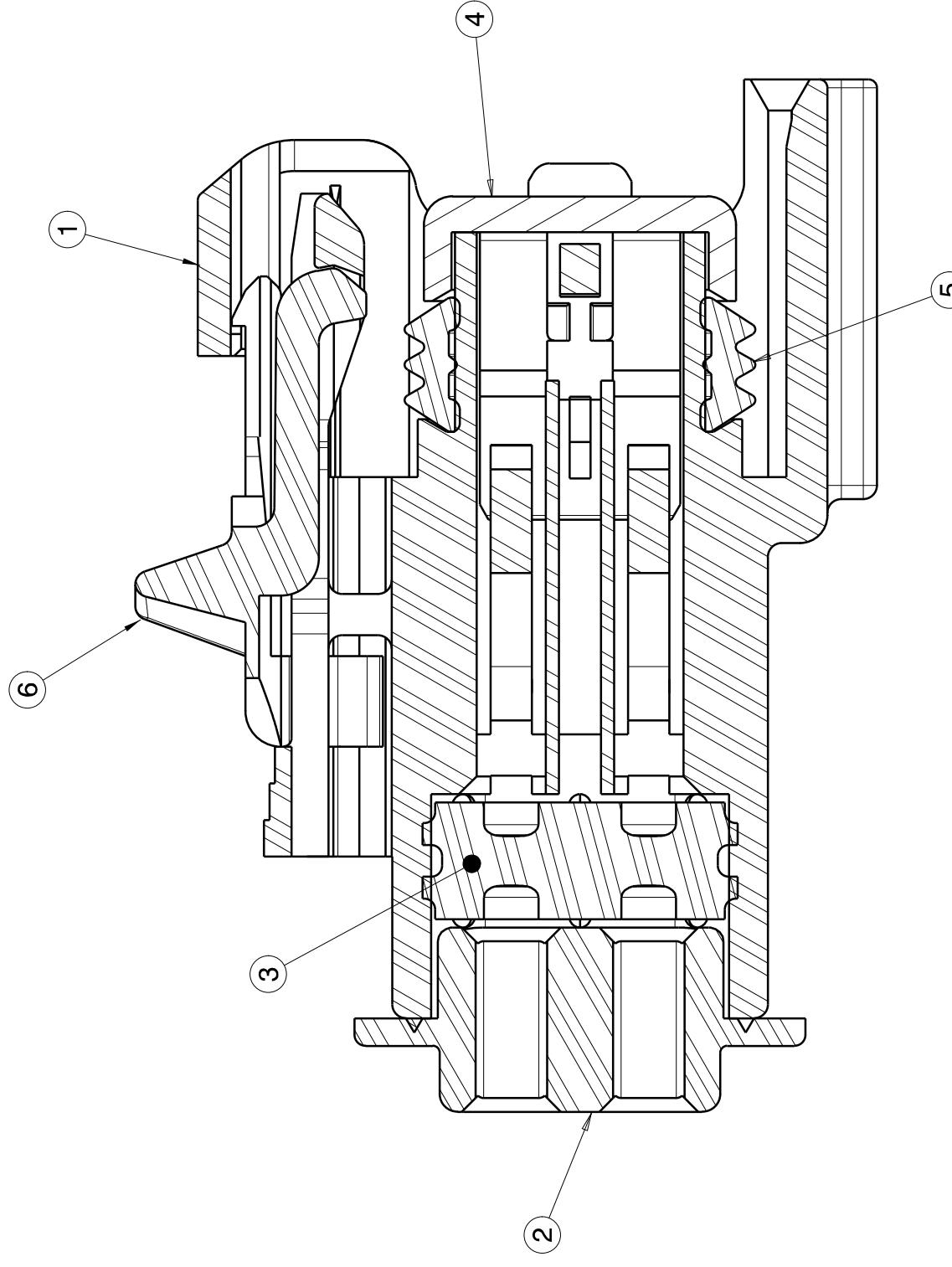


SCALE 1:1



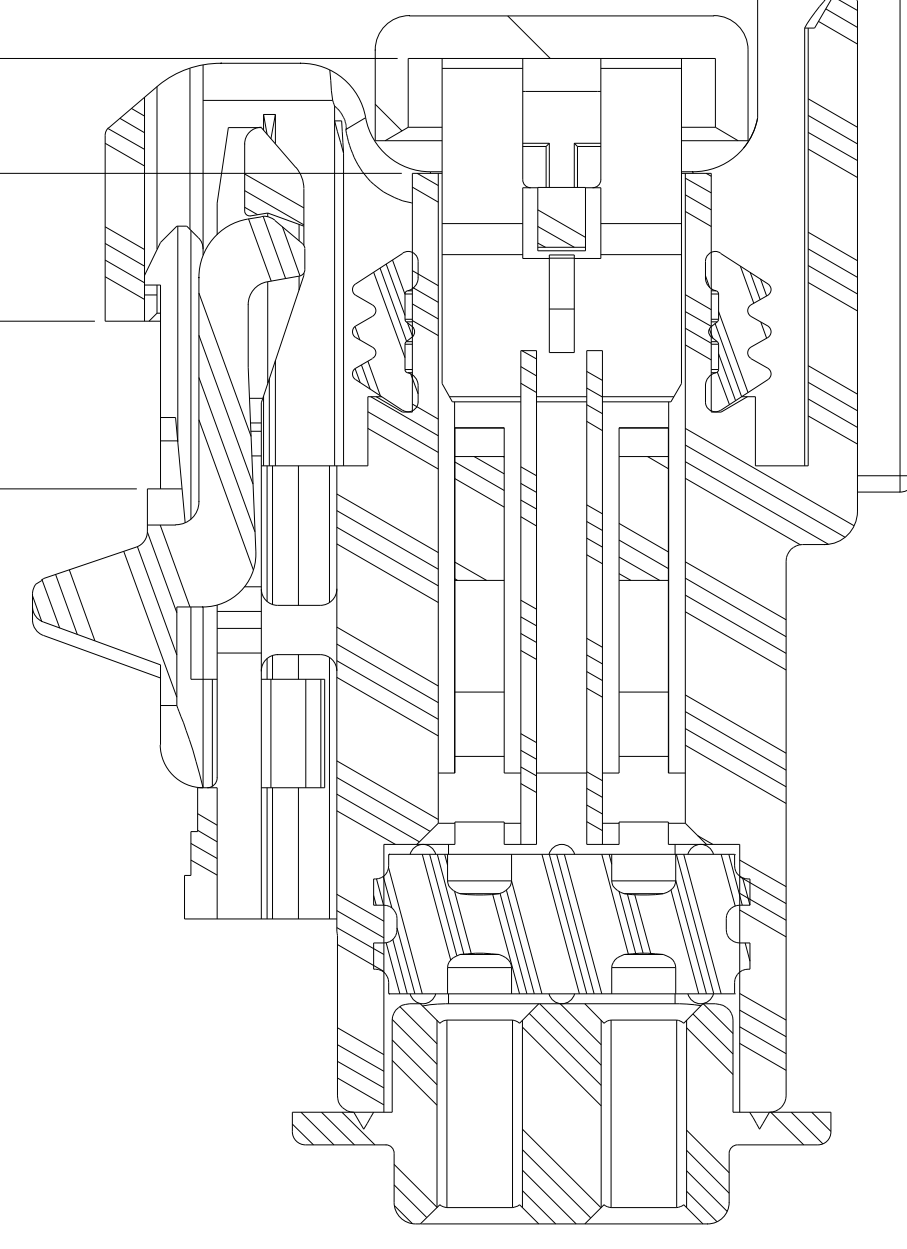
KEY OPTION:
HOUSING COLOR: DARK GRAY
P/N 04868372AA

"C"



SECTION A-A

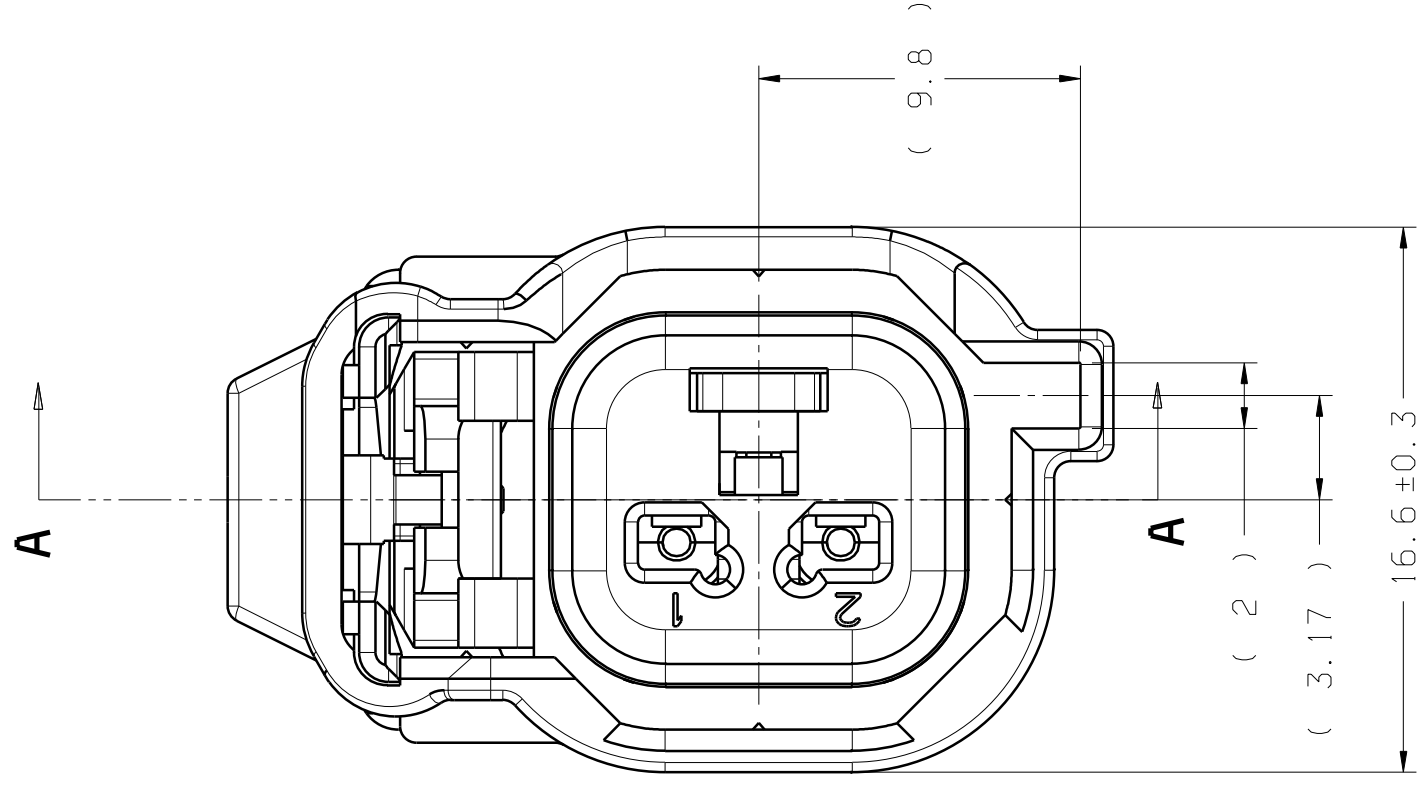
(5.1)
CPA TRAVEL DISTANCE FROM PRE-LOCK POSITION TO FINAL-LOCK POSITION



SECTION A-A
INSERT AND CPA SHOWN IN PRE-LOCK POSITION

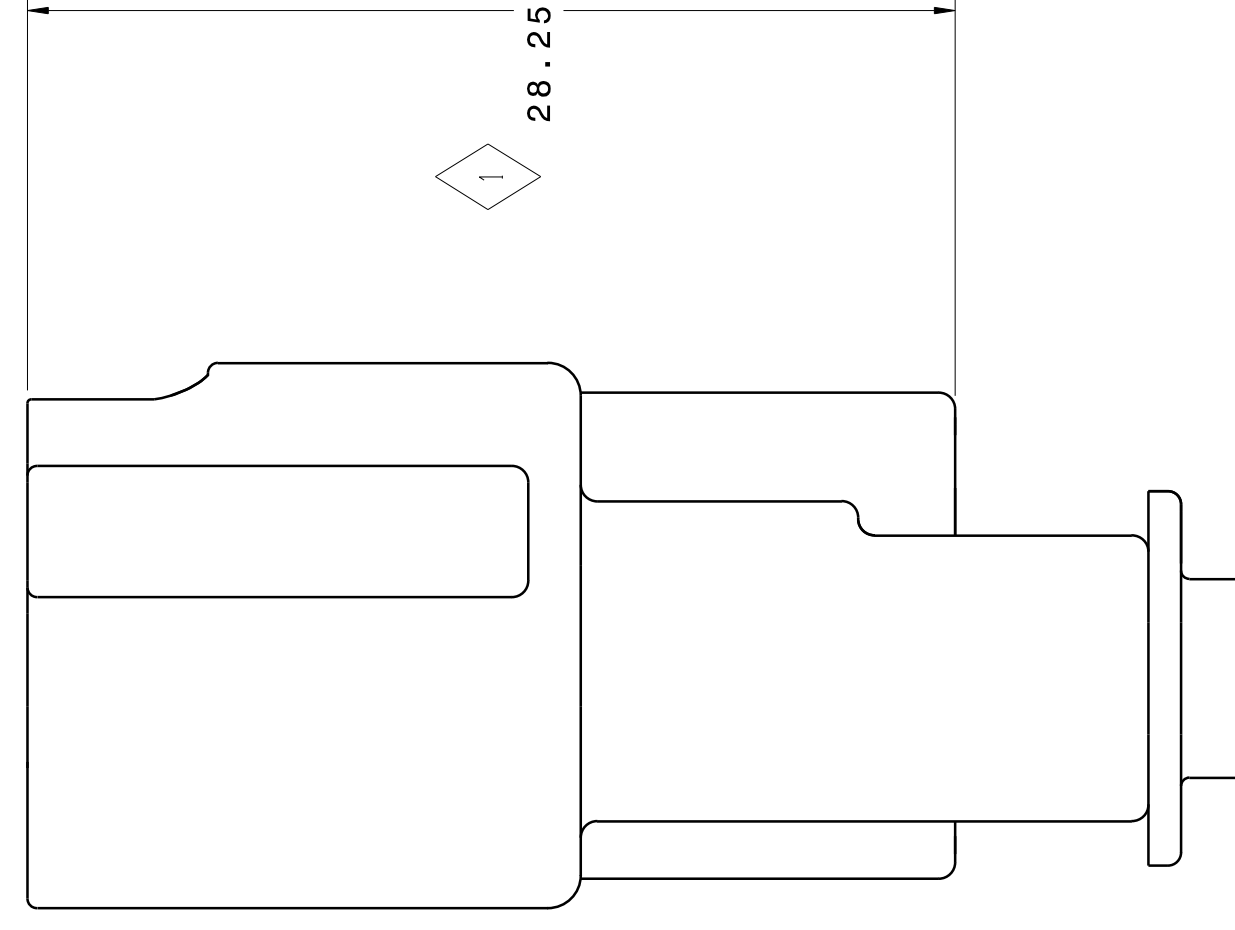
KEY OPTION:
HOUSING COLOR: DARK GRAY
P/N 04868372AA

"B"



SECTION A-A

(28.25 ± 0.4)

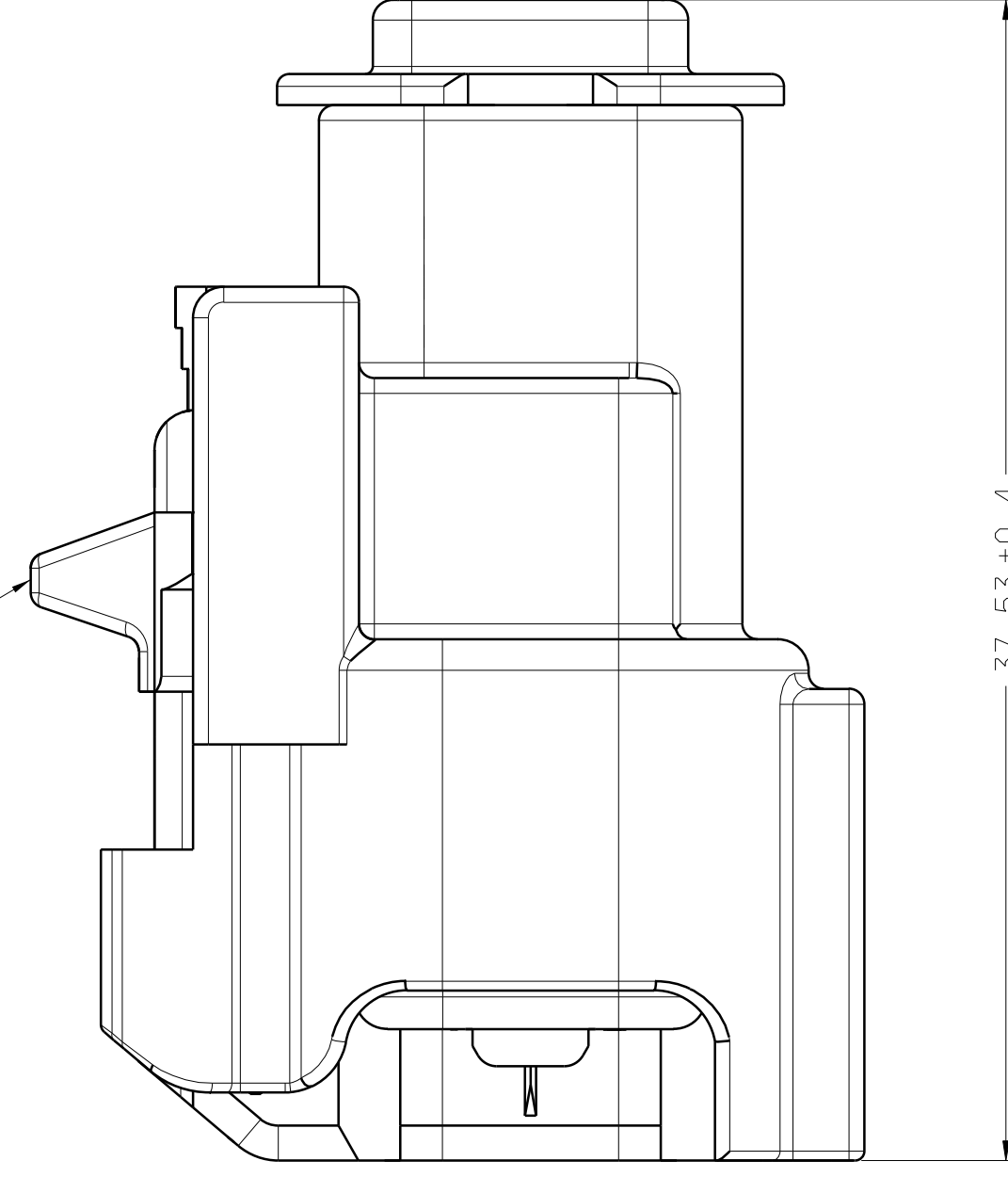


GROMMET CAP TO BE SONICALLY WELDED TO CONNECTOR HOUSING. NO VISIBLE EXCESS FLASH IN WELD AREA PERMISSIBLE. GROMMET CAP TO MEET OR EXCEED 130 NEWTONS OF PULL-OFF FORCE.

ITEM #	QTY	MOLEX PART #	CHRYSLER PART #	DESCRIPTION	MATERIAL
1	1	33195-0003	N/A	HOUSING	ZYTEL DMX 61015H GBY694 OR 65015AH (LT GRAY)
2	1	33209-0001	4793198	GROMMET CAP	ZYTEL DMX 61015H OR 65015AH BK407
3	1	33019-0023	4793197	GROMMET	SILICONE 30 DURO (BLACK ORANGE)
4	1	33208-0001	4793195	INSERT	ZYTEL DMX 61015H OR 65015AH NC010
5	1	33019-0020	4793196	SEAL-PERIMETER	SILICONE 50 DURO (BLUE)
6	1	33199-0001	4793199	C.P.A.	NORYL GTX 810 (RED)

ITEM #	QTY	MOLEX PART #	CHRYSLER PART #	DESCRIPTION	MATERIAL
1	1	33195-0003	N/A	HOUSING	ZYTEL DMX 61015H GBY695 OR 65015AH(LK GRAY)
2	1	33209-0001	4793198	GROMMET CAP	ZYTEL DMX 61015H OR 65015AH BK407
3	1	33019-0023	4793197	GROMMET	SILICONE 30 DURO (BLACK ORANGE)
4	1	33208-0001	4793195	INSERT	ZYTEL DMX 61015H OR 65015AH NC010
5	1	33019-0020	4793196	SEAL-PERIMETER	SILICONE 50 DURO (BLUE)
6	1	33199-0001	4793199	C.P.A.	NORYL GTX 810 (RED)

CPA MOLEX PART NUMBER: 33199-0001
SHOWN IN PRE-LOCK POSITION



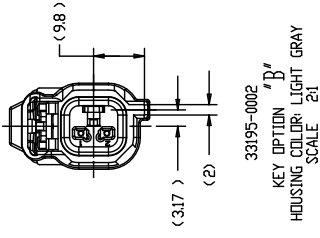
SECTION A-A

- NOTES: UNLESS OTHERWISE SPECIFIED
- REFER TO CHRYSLER DRAWING NUMBER 04793751 FOR COMPONENT DEVICE INTERFACE PRINT.
 - REFER TO ASSEMBLY SET-UP SHEETS FOR DETAILED COMPONENT INFORMATION AND PART NUMBERS.
 - PACKAGING: PARTS TO BE PACKAGED IN (TBD PER PACKAGING PLAN COMPLETION).
 - FORCE TO PUSH INSERT INTO FINAL-LOCK POSITION SHALL BE 0.1 N OF FORCE.
 - MINIMUM FORCE TO TAKE INSERT FROM FINAL-LOCK TO PRE-LOCK IS 27.0 N OF FORCE.
 - MINIMUM FORCE TO REMOVE INSERT FROM CONNECTOR ONCE IN PRE-LOCK IS 20.0 N OF FORCE.
 - MOLEX INSPECTION DEPARTMENT AND CUSTOMER WILL RECEIVE ASSEMBLY WITH INSERT AND CPA IN PRE-LOCK POSITION -- (SECTION A-A).
 - THE MAXIMUM INSERTION FORCE FOR A 16AWG TO 20AWG WIRE SHALL BE 30N (EXCEPTION OF PER 9600 REV A SECTION 3.1.2).
 - QUALITY ASSURANCE REQUIREMENT PER PS-7300: 1 DIAMOND
 - CRITICAL VERIFICATION REQUIREMENT PER PS-8335: 4 PENTAGONS
 - SYSTEM TO BE USED WITH MS-8288 AND MS-9502. CABLE SIZE 20, 18, 16 AWG FOR SEALING PURPOSE ONLY.

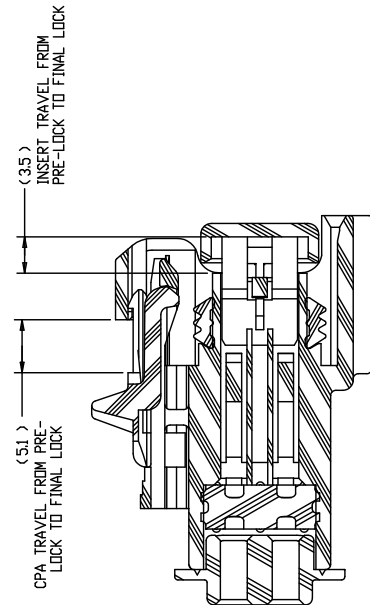
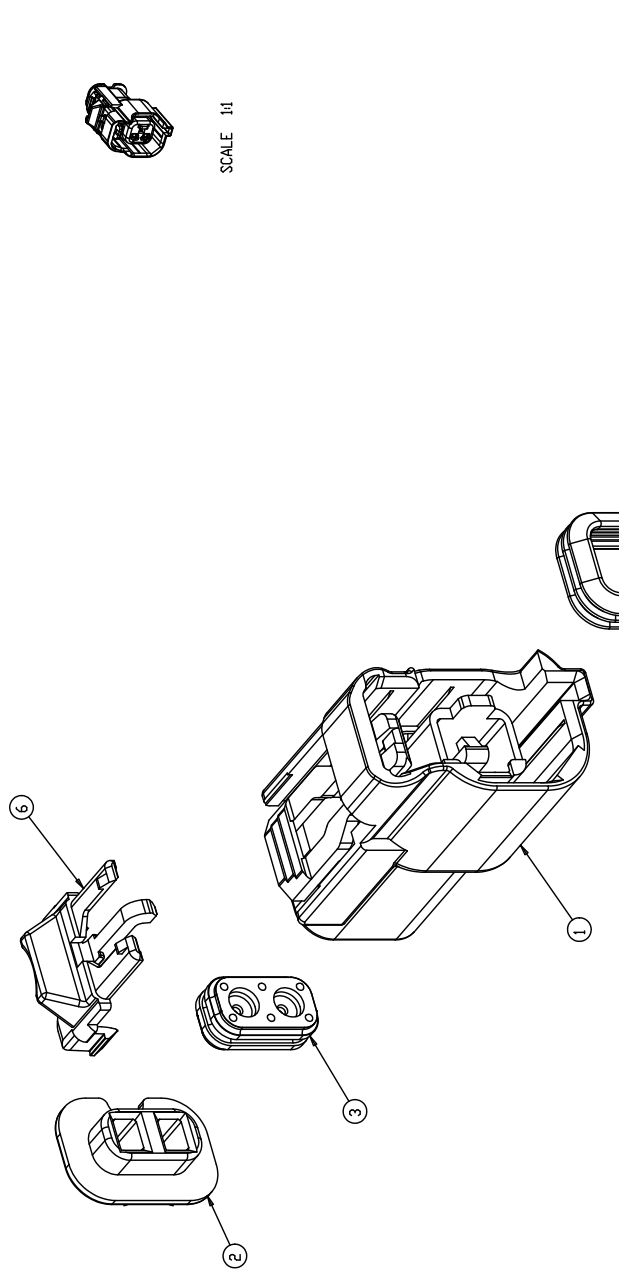
REVISION	ZONE	REASON	DATE	BY	CHKD	APP'D	REL. DATE
1		ISSUE FOR PRODUCTION	11-18-06	H			
2		ADD VIA TO CONNECTOR P/N, SEE 9-1-99 8 8	9-1-99	B			
3		REVISED TO INCLUDE P/N, AND 9-1-99 8 8	9-1-99	B			
4		DO NOT SCALE PRINT					
5		REVISION RECORD					
6		REVISION RECORD					
7		REVISION RECORD					
8		REVISION RECORD					
9		REVISION RECORD					
10		REVISION RECORD					
11		REVISION RECORD					
12		REVISION RECORD					
13		REVISION RECORD					
14		REVISION RECORD					
15		REVISION RECORD					
16		REVISION RECORD					
17		REVISION RECORD					
18		REVISION RECORD					
19		REVISION RECORD					
20		REVISION RECORD					
21		REVISION RECORD					
22		REVISION RECORD					
23		REVISION RECORD					
24		REVISION RECORD					
25		REVISION RECORD					
26		REVISION RECORD					
27		REVISION RECORD					
28		REVISION RECORD					
29		REVISION RECORD					
30		REVISION RECORD					
31		REVISION RECORD					
32		REVISION RECORD					
33		REVISION RECORD					
34		REVISION RECORD					
35		REVISION RECORD					
36		REVISION RECORD					
37		REVISION RECORD					
38		REVISION RECORD					
39		REVISION RECORD					
40		REVISION RECORD					
41		REVISION RECORD					
42		REVISION RECORD					
43		REVISION RECORD					
44		REVISION RECORD					
45		REVISION RECORD					
46		REVISION RECORD					
47		REVISION RECORD					
48		REVISION RECORD					
49		REVISION RECORD					
50		REVISION RECORD					
51		REVISION RECORD					
52		REVISION RECORD					
53		REVISION RECORD					
54		REVISION RECORD					
55		REVISION RECORD					
56		REVISION RECORD					
57		REVISION RECORD					
58		REVISION RECORD					
59		REVISION RECORD					
60		REVISION RECORD					
61		REVISION RECORD					
62		REVISION RECORD					
63		REVISION RECORD					
64		REVISION RECORD					
65		REVISION RECORD					
66		REVISION RECORD					
67		REVISION RECORD					
68		REVISION RECORD					
69		REVISION RECORD					
70		REVISION RECORD					
71		REVISION RECORD					
72		REVISION RECORD					
73		REVISION RECORD					
74		REVISION RECORD					
75		REVISION RECORD					
76		REVISION RECORD					
77		REVISION RECORD					
78		REVISION RECORD					
79		REVISION RECORD					
80		REVISION RECORD					
81		REVISION RECORD					
82		REVISION RECORD					
83		REVISION RECORD					
84		REVISION RECORD					
85		REVISION RECORD					
86		REVISION RECORD					
87		REVISION RECORD					
88		REVISION RECORD					
89		REVISION RECORD					
90		REVISION RECORD					
91		REVISION RECORD					
92		REVISION RECORD					
93		REVISION RECORD					
94		REVISION RECORD					
95		REVISION RECORD					
96		REVISION RECORD					
97		REVISION RECORD					
98		REVISION RECORD					
99		REVISION RECORD					
100		REVISION RECORD					

REVISION	ZONE	REASON	DATE	BY	CHKD	APP'D	REL. DATE
1		ISSUE FOR PRODUCTION	11-18-06	H			
2		ADD VIA TO CONNECTOR P/N, SEE 9-1-99 8 8	9-1-99	B			
3		REVISED TO INCLUDE P/N, AND 9-1-99 8 8	9-1-99	B			
4		DO NOT SCALE PRINT					
5		REVISION RECORD					
6		REVISION RECORD					
7		REVISION RECORD					
8		REVISION RECORD					
9		REVISION RECORD					
10		REVISION RECORD					
11		REVISION RECORD					
12		REVISION RECORD					
13		REVISION RECORD					
14		REVISION RECORD					
15		REVISION RECORD					
16		REVISION RECORD					
17		REVISION RECORD					
18		REVISION RECORD					
19		REVISION RECORD					
20		REVISION RECORD					
21		REVISION RECORD					
22		REVISION RECORD					
23		REVISION RECORD					
24		REVISION RECORD					
25		REVISION RECORD					
26		REVISION RECORD					
27		REVISION RECORD					
28		REVISION RECORD					
29		REVISION RECORD					
30		REVISION RECORD					
31		REVISION RECORD					
32		REVISION RECORD					
33		REVISION RECORD					
34		REVISION RECORD					
35		REVISION RECORD					
36		REVISION RECORD					
37		REVISION RECORD					
38		REVISION RECORD					
39		REVISION RECORD					
40		REVISION RECORD					
41		REVISION RECORD					
42		REVISION RECORD					
43		REVISION RECORD					
44		REVISION RECORD					
45		REVISION RECORD					
46		REVISION RECORD					
47		REVISION RECORD					
48		REVISION RECORD					
49		REVISION RECORD					
50		REVISION RECORD					
51		REVISION RECORD					
52		REVISION RECORD					
53		REVISION RECORD					
54		REVISION RECORD					
55		REVISION RECORD					
56		REVISION RECORD					
57		REVISION RECORD					
58		REVISION RECORD					
59		REVISION RECORD					
60		REVISION RECORD					
61		REVISION RECORD					
62		REVISION RECORD					
63		REVISION RECORD					
64		REVISION RECORD					
65		REVISION RECORD					
66		REVISION RECORD					
67		REVISION RECORD					
68		REVISION RECORD					

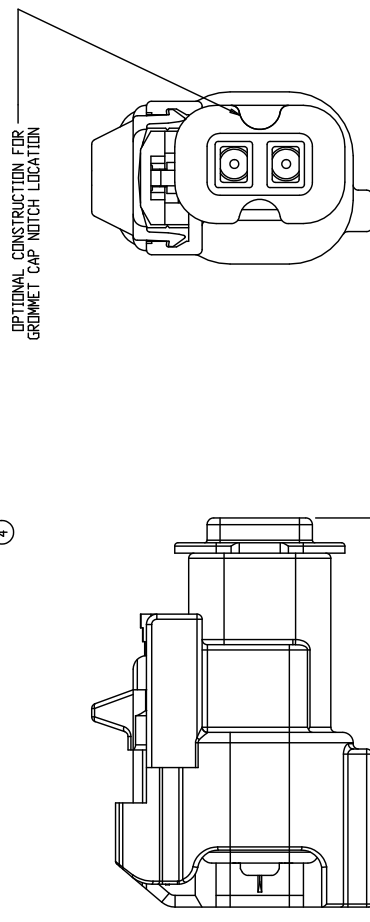
MOLEX P/N 33195-0002 (REF CHRYSLER ASSEMBLY NUMBER 04868346AA) OPTION "B", LIGHT GRAY				
ITEM #	QTY.	PART NO.	DESCRIPTION	MATERIAL
1	1	33195-0003	HOUSING RECEPTACLE	15% GLASS FILLED NYLON
2	1	33209-0001	CAP GROMMET	15% GLASS FILLED NYLON
3	1	33019-0023	GROMMET	SILICONE 30 DURO, BURNIT ORANGE (MS-AJ30)
4	1	33208-0001	INSERT RECEPTACLE	15% GLASS FILLED NYLON
5	1	33019-1021	SEAL, PERIMETER	SILICONE 30 DURO, BLUE (MS-AJ30)
6	1	33199-0001	CPA	NORYL GTX 810, RED (MS-DB414)



SCALE: 1:1



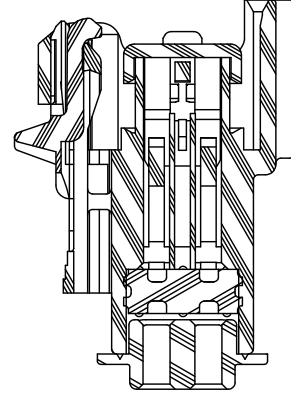
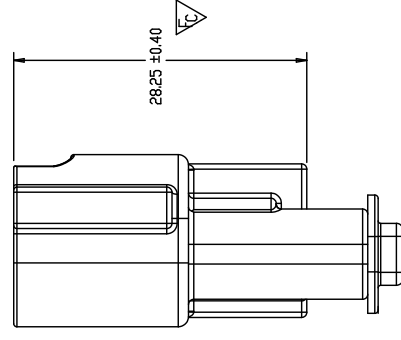
SECTION A-A
INSERT AND CPA SHOWN IN
PRE-LOCK POSITION
(SEE NOTE 6)



NOTES:

- UNLESS OTHERWISE SPECIFIED, ALL LINEAR DIMENSIONS TO BE ±0.1, ALL ANGULAR DIMENSIONS TO BE ±3°
- REFER TO CHRYSLER DRAWING NUMBER 04868368AA FOR COMPONENT INTERFACE PRINT.
- FORCE TO PUSH INSERT INTO FINAL-LOCK POSITION SHOULD BE: 10 N TO 50 N.
- MINIMUM FORCE TO TAKE INSERT FROM FINAL-LOCK TO PRE-LOCK IS 27 N.
- MINIMUM FORCE TO REMOVE INSERT FROM CONNECTOR ONCE INSERT IS IN PRE-LOCK IS 20 N.
- MOLEX INSPECTION DEPARTMENT AND CUSTOMER WILL RECEIVE ASSEMBLY WITH INSERT AND CPA IN PRE-LOCK POSITION - SEE SECTION A-A.
- GROMMET CAP TO BE SONICALLY WELDED TO CONNECTOR HOUSING GROMMET CAP TO MEET OR EXCEED 130 N OF PULL OFF FORCE.
- ONLY CABLE SIZE 2018, OR 16 AWG TO BE USED FOR SEALING PURPOSE.
- MAXIMUM INSERTION FORCE FOR A 16 AWG TO 20 AWG TERMINAL LESS THAN OR EQUAL TO 30N (EXCEPTION OF PF9600 REV. A SECTION 5.3.1.2)
- SEE MOLEX DRAWING SD-33119-001 FOR TERMINAL USE.

QUALITY SYMBOL	COUNT
PERFORMANCE	0
ASSEMBLY	0
CUSTOMER	5



SECTION A-A
INSERT AND CPA SHOWN IN
FINAL-LOCK POSITION

QUALITY SYMBOLS	GENERAL TOLERANCES (UNLESS SPECIFIED)		SCALE	DESIGN UNITS	THIRD ANGLE PROJECTION	REVISE ON CAD ONLY
	M/M	INCH				
4 PLACES ± NA	± NA	± NA	1:1	MM		
3 PLACES ± NA	± NA	± NA				
2 PLACES note 1	± NA	± NA				
1 PLACE note 1	± NA	± NA				
	ANGULAR	See note 1				
DESCRIPTION		TITLE				
REVISIONS		RECEPTACLE CONNECTOR ASSEMBLY FUEL INJECTOR, 1.5MM BLADE INDEX "B"				
APPROVED BY	DATE	MATERIAL NO.	DOCUMENT NO.	SHEET NO.		
APPR: V KOSHY		3319X-0002	SD-33195-002	1 OF 1		
CHK: I HERFURTH				E		
DRW: LDKESH SG				E		
EC NO: UAU2011-0759				E		
DISDELETE P/N REMOVED				E		