

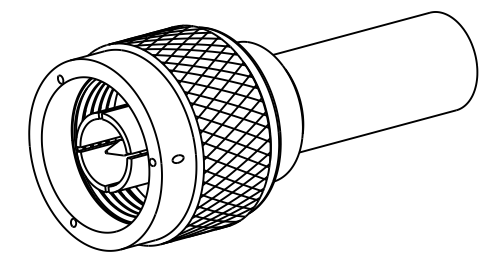
NOTES:

1. MATERIALS AND FINISHES:
 BODY, COUPLING NUT AND
 OUTER CONTACT - BRASS, BLACK CHROMATE OVER NICKEL
 CONTACT - BRASS, GOLD PLATING
 RETAINING RING - STAINLESS STEEL, NATURAL
 INSULATOR - PTFE, NATURAL
 GASKET - SILICON RUBBER, RED
 FERRULE - COPPER, BLACK CHROMATE OVER NICKEL
2. ELECTRICAL:
 A. IMPEDANCE: 50 OHM
 B. FREQUENCY RANGE: DC - 11 GHz
3. MECHANICAL:
 A. DURABILITY: 500 CYCLES MIN.
 B. TEMPERATURE RANGE: -65°C TO +165°C
 C. COSMETIC PARAMETERS OF PLATING PER AMPHENOL SPEC. 349-50966.
4. PACKAGING:
 A. QUANTITY: SINGLE PACK
 B. MARKING: PACKAGING TO BE MARKED
 "AMPHENOL RF, 82-6412-BC AND DATE CODE"

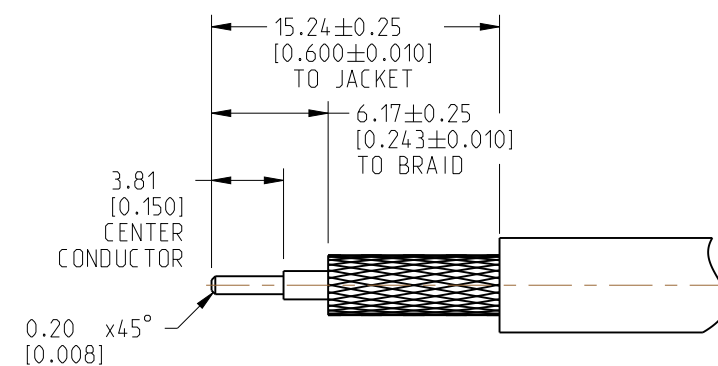
5. CABLE ASSEMBLY INSTRUCTIONS:
 A. TRIM CABLE AS SHOWN.
 B. SLIDE HEAT SHRINK TUBING AND FERRULE ONTO CABLE.
 C. CRIMP CONTACT TO CABLE WITH AMPHENOL TOOL 227-944 AND DIE SET 227-1221-57 CAVITY B (0.100" HEX) OR SOLDER.
 D. INSERT CABLE INTO CONNECTOR WITH BRAID OVER KNURL UNTIL IT BOTTOMS.
 E. CRIMP FERRULE WITH AMPHENOL TOOL 227-944 AND DIE SET 227-1221-57 CAVITY A (0.213" HEX).

6 SHOWS CABLE ENTRY DIMENSIONS.

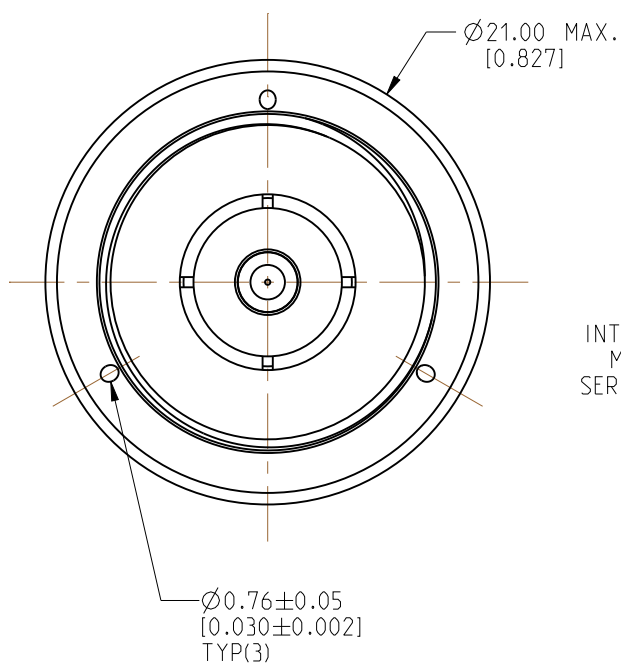
REVISIONS				
REV	DESCRIPTION	DATE	ECN	BY
A	RELEASE TO MFG.	14-DEC-22	16508	SH



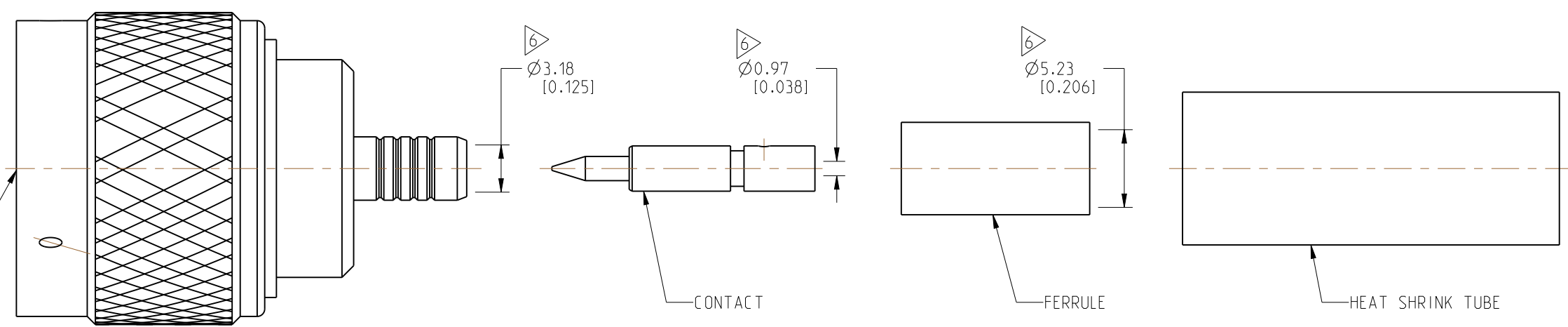
SCALE 1.300



RECOMMENDED CABLE STRIPPING DIMENSIONS



INTERFACE PER MIL-STD-348 SERIES: N PLUG



CUSTOMER OUTLINE DRAWING
 ALL OTHER SHEETS ARE FOR INTERNAL USE ONLY

NOTICE: These drawings, specifications, or other data (1) are, and remain the property of Amphenol corp. (2) must be returned upon request; and (3) are confidential and not to be disclosed to any person other than those to whom they are given by Amphenol Corp. The furnishing of these drawings, specifications, or other data by Amphenol Corp., or to any other person to anyone for any purpose is not to be regarded by implication or otherwise in any manner licensing, granting rights to permitting such holder or any other person to manufacture, use or sell any product, process or design, patented or otherwise, that may in any way be related to or disclosed by said drawings, specifications, or other data.			UNLESS OTHERWISE SPECIFIED DIMENSIONS ARE METRIC (INCHES) AND TOLERANCES ARE: <0.5mm = ±0.05mm [$<0.020 = \pm 0.002$] 0.5 - 6mm = ±0.1mm [$>0.020 - 0.236 = \pm 0.004$] >6.00 - 30mm = ±0.2mm [$>0.236 - 1.181 = \pm 0.008$] >30.00 - 120mm = ±0.3mm [$>1.181 - 4.725 = \pm 0.012$] ANGLES = ±1°			MATERIAL SEE NOTES			TITLE QUICK CRIMP N STR PLUG FOR RG 141A/U CABLE BLACK PLATED			Amphenol RF														
THIRD ANGLE PROJ.			REFERENCE 82-6412			ENGR.1 SIVA			ENGR.2 M.ZHANG			DATE 24-OCT-22			SHEET NO. 2 OF 2			SCALE: 2.8:1.0			DRAWING NO. 82-6412-BC ITEM NO. 82-6412-BC PART NO. 82-6412-BC			REV A		