

NOTES:

1. SEE CABLE SPECIFICATION ES-99027-0006.
2. SEE PRODUCT SPECIFICATION PS-99020-0015
3. HARNESS TO BE 100% ELECTRICALLY TESTED
4. CABLE I.D. TO BE SURFACE MARKED AS SHOWN

ITEM	COMPONENT	DESCRIPTION	QUANTITY	NOTE
▽1	99026-0034	40 CCT RIBBON CABLE 28 AWG	1	1,3,4
▽2	90781-6540	QF50 40 CCT CONNECTOR (REEL)	3	2,3

5	E
4	E
3	E
2	F
1	F

CABLE I.D.	MOLEX PART No.	DIM A	DIM B
HDDCBLO14AAWW	92305-0001	216±5	63.5±3
HDDCBLO15AAWW	92305-0002	381±5	63.5±3
CDRCBL004AAWW	92305-0004	476±5	159±5

FOR PREVIOUS DRAWING ISSUES SEE MRI.

SHEET 2 UPDATED
ECN E71073
14 MAY 1997 MCUR

LTR REVISIONS

DIMENSIONS SHOWN (METRIC) INCH	
UNLESS OTHERWISE SPECIFIED TOLERANCES: ANGULAR ± 1/2°	
INCH	(METRIC)
3 PLACE ± .	
2 PLACE ± .	±
1 PLACE ± .	±

DRAFT WHERE APPLICABLE MUST REMAIN WITHIN DIMENSIONS

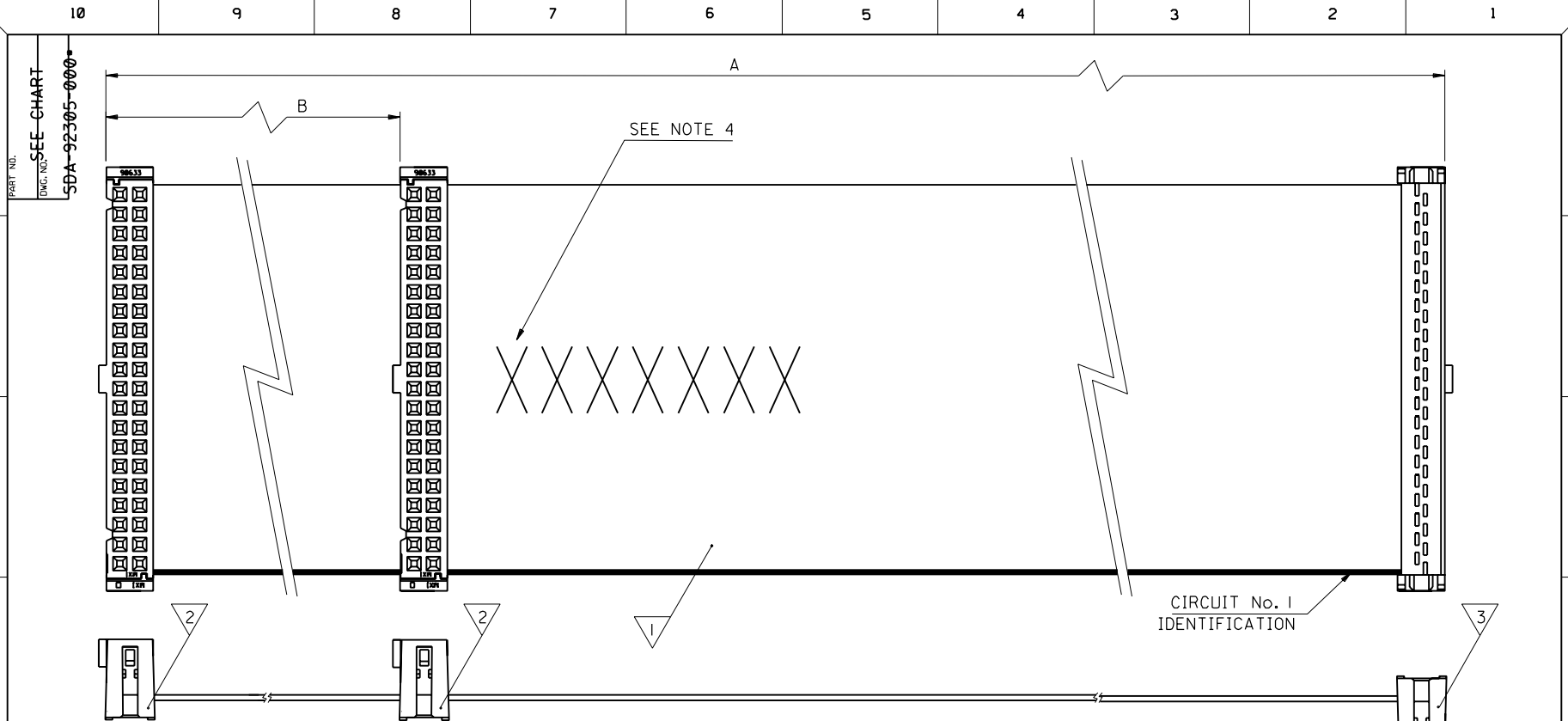
DESIGN DIMENSION (MM) (PRIMARY) IN.

EQUIVALENT DIMENSION (MM) (SECONDARY) IN.

DRWG BY: MOR
CHK'D BY:
APP'D BY:
SCALE: 2:1

REVISE ONLY ON CAD SYSTEM

CAD/CAM FILENAME S92305X1 DGN	THIS DRAWING CONTAINS INFORMATION THAT IS PROPRIETARY TO MOLEX INC. & SHOULD NOT BE USED WITHOUT WRITTEN PERMISSION
TITLE RIBBON CABLE HARNESS	
MOLEX EUROPE	
SHEET NO. DATE 10F5 96/12/18	
PART NO. SEE CHART	DWG NO. SDA-92305-000
SIZE B	



SEE NOTE 4

CIRCUIT No. 1 IDENTIFICATION

ITEM	COMPONENT	DESCRIPTION	QUANTITY	NOTE
▽	99026-0034	40 CCT RIBBON CABLE 28 AWG	1	1,3,4
▽	90781-6540	QF50 40 CCT CONNECTOR (REEL)	2	2,3
▽	90781-6440	QF50 40 CCT CONNECTOR (REEL)	1	2,3

CABLE I.D.	MOLEX PART No.	CUT LENGTH	DIM A	DIM B
8001186	92305-0007	478	476±5	159±5

NOTES:

1. SEE CABLE SPECIFICATION ES-99027-0006.
2. SEE PRODUCT SPECIFICATION PS-99020-0015.
3. HARNESS TO BE 100% ELECTRICALLY TESTED
4. CABLE I.D. CHARACTER HEIGHT 10mm

FOR PREVIOUS DRAWING ISSUES SEE MRI.

SEE SHEET I.

DIMENSIONS SHOWN (METRIC) INCH UNLESS OTHERWISE SPECIFIED TOLERANCES: ANGULAR ± 1/2°	INCH (METRIC)	
	3 PLACE ± .	±
	2 PLACE ± .	±
	1 PLACE ±	±
DRAFT WHERE APPLICABLE MUST REMAIN WITHIN DIMENSIONS		
DESIGN DIMENSION (PRIMARY)	<input type="checkbox"/> IN.	<input checked="" type="checkbox"/> (MM)
EQUIVALENT DIMENSION (SECONDARY)	<input type="checkbox"/> IN.	<input type="checkbox"/> (MM)

DRWG BY
MCUR

CHK'D BY

APP'D BY

SCALE
2:1

REVISE ONLY ON CAD SYSTEM		SHL.	REV.
CAD/CAM FILENAME 592305X4 DGN		THIS DRAWING CONTAINS INFORMATION THAT IS PROPRIETARY TO MOLEX INC. & SHOULD NOT BE USED WITHOUT WRITTEN PERMISSION	
TITLE RIBBON CABLE HARNESS			
MOLEX EUROPE		SHEET NO. 40F	DATE 97/04/18
PART NO. SEE CHART	DWG NO. SDA-92305-000•	SIZE B	