

| PART NUMBER | REV | FIRST USED | TERMINATOR | FEED TYPE | DESCRIPTION |
|-------------|-----|------------|-------------------|----------------|--------------------|
| 1339775-1 | A | | BENCH & LEADMAKER | MECH POST FEED | HD-I APPLICATOR |
| 7-1339775-1 | A | | BENCH & LEADMAKER | MECH POST FEED | -1 AND SPARE PARTS |
| 7-1339775-7 | A | | - | - | SPARE PARTS KIT |

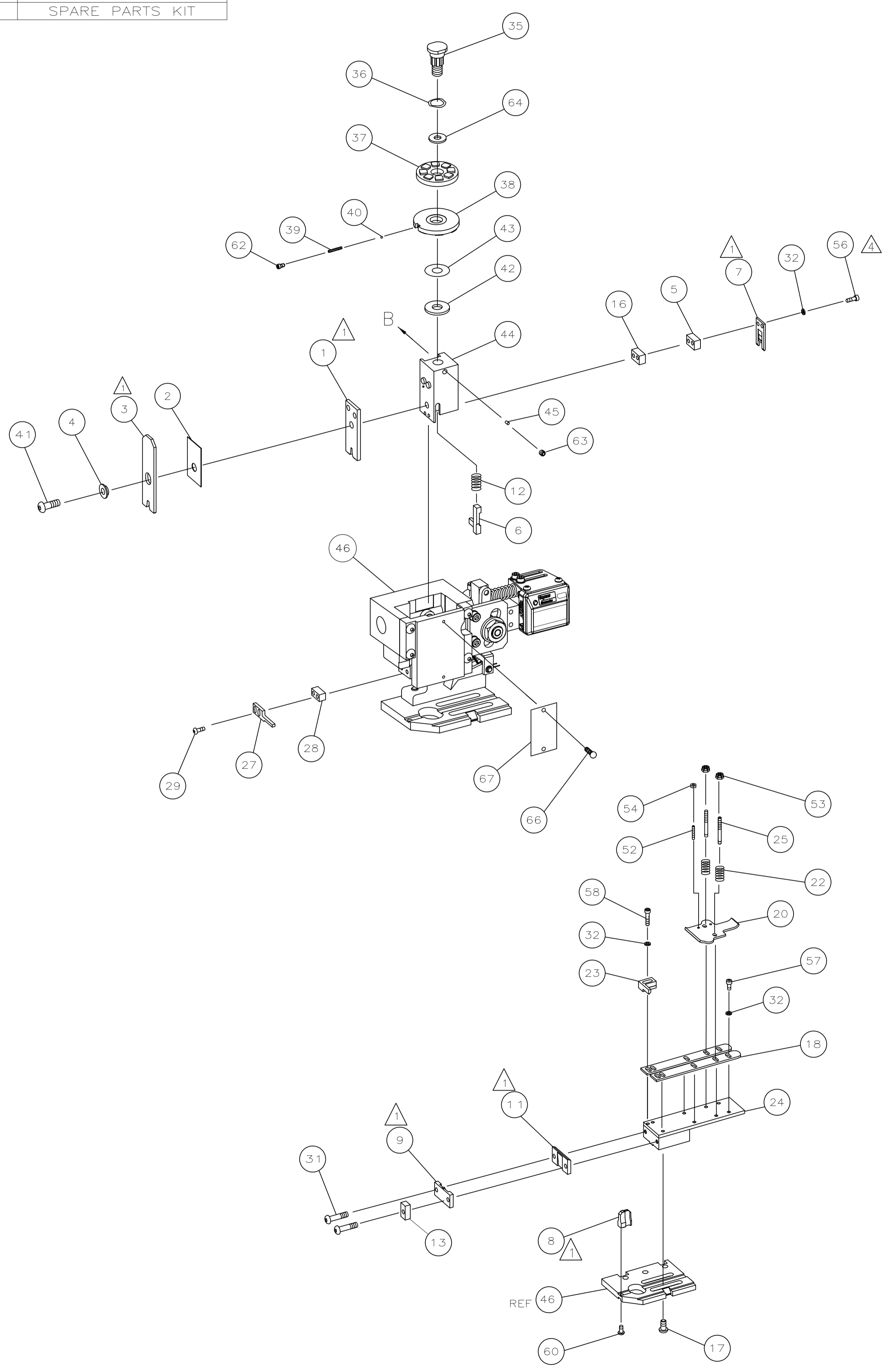
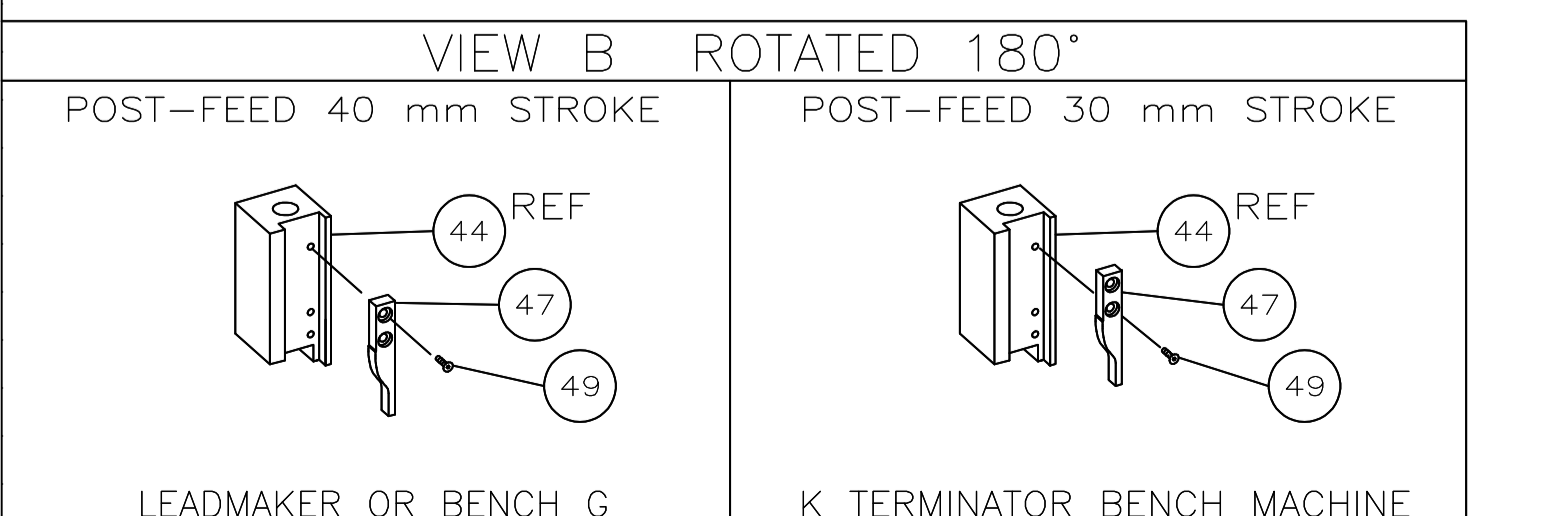
| CRIMP DATA AMP TERMINAL AMP CRIMP SPECS | | | |
|------------------------------------------------|----------------|------------------|--------------------------|
| TERMINAL NAME: RECEPTACLE, FASTON, .110 SERIES | | | |
| CRIMP | SIZE | TYPE | RANGE |
| WIRE | 1.57 [.062 IN] | F | 22-18 AWG |
| INSUL | 3.56 [.140 IN] | F | 2.30-3.30 [.090-.130 IN] |
| WIRE STRIP LENGTH | | APPL INSTRUCTION | |
| 5.21-5.97 [.205-.235 IN] | | 408-8323 | |
| TERMINAL APPL SPEC | 114-2036 | | FEED 17.90 [.705 IN] |

| TERMINALS APPLIED | | | |
|-------------------|---|---|---|
| 62523 | - | - | - |
| 62094 | - | - | - |
| 1742785 | - | - | - |
| - | - | - | - |
| - | - | - | - |
| - | - | - | - |
| - | - | - | - |
| - | - | - | - |
| - | - | - | - |
| - | - | - | - |
| - | - | - | - |
| - | - | - | - |
| - | - | - | - |
| - | - | - | - |
| - | - | - | - |
| - | - | - | - |
| - | - | - | - |
| - | - | - | - |
| - | - | - | - |
| - | - | - | - |
| - | - | - | - |

| WIRE SIZE mm² AWG | CRIMP HEIGHT | PIN PN AND LENGTH [IN] |
|-------------------|----------------------------|------------------------|
| 18 AWG | 1.24 ±0.05 [.049 ±.002 IN] | 2-354779-4 [.3110] |
| 20 AWG | 1.09 ±0.05 [.043 ±.002 IN] | 3-354779-6 [.3170] |
| 22 AWG | 1.02 ±0.05 [.040 ±.002 IN] | 4-354779-2 [.3200] |
| - | - | - |
| - | - | - |
| - | - | - |
| - | - | - |
| - | - | - |
| - | - | - |
| - | - | - |
| - | - | - |
| - | - | - |
| - | - | - |
| - | - | - |
| - | - | - |
| - | - | - |
| - | - | - |
| - | - | - |
| - | - | - |
| - | - | - |
| - | - | - |
| - | - | - |

| | |
|----------------------|-----------------|
| SET UP GAGE 458638-3 | LAYOUT L1339775 |
|----------------------|-----------------|

- 1 RECOMMENDED SPARE PARTS.
- 2. GREASE RAM, CAM, CAM FOLLOWER AND FEED ROD LIGHTLY.
- 3. LUBRICATE DAILY PER THE APPLICATOR INSTRUCTION SHEET SUPPLIED WITH THE APPLICATOR.
- 4 CUT TO LENGTH AT ASSY.



| LOC | QTY | REV | PART NO | DESCRIPTION | ITEM NO |
|-------------------|-----|-----|-------------|------------------------------|---------|
| - | 1 | 1 | 1339775 | PRINT, APPLICATOR LOG SHEET | 72 |
| - | 1 | 1 | 1338705-2 | DOCUMENTATION PACKAGE | 71 |
| - | - | - | - | - | 70 |
| - | - | - | - | - | 69 |
| - | - | - | - | - | 68 |
| - | 1 | 1 | 461264-1 | PLATE, IDENTIFICATION | 67 |
| - | 2 | 2 | 21017-2 | SCR,DRIVE(#2X.19)ID PLATE | 66 |
| - | - | - | - | - | 65 |
| - | 1 | 1 | 986950-1 | WASHER, FLAT PRECISION | 64 |
| - | 1 | 1 | 3-18031-0 | SCR,SKT SET(M6X6)RAM | 63 |
| - | 1 | 1 | 18023-9 | SCR,SKT CAP(M4X6)CP DSC | 62 |
| - | - | - | - | - | 61 |
| - | 1 | 1 | 18024-7 | SCR,BHC(M4X10)ANVIL | 60 |
| - | - | - | - | - | 59 |
| - | 2 | 2 | 1-18023-3 | SCR,SHC(M4X16)HOLD DOWN | 58 |
| - | 5 | 5 | 18023-9 | SCR,SHC(M4X6)STRIP GUIDE | 57 |
| - | 2 | 2 | 1-18023-2 | SCR,SHC(M4X12)SLUG BLADE | 56 |
| - | - | - | - | - | 55 |
| - | 2 | 2 | 18029-1 | NUT,HEX(M3)DRAG | 54 |
| - | 2 | 2 | 986965-1 | NUT,HEX_SL(M4)DRAG STUD | 53 |
| - | 2 | 2 | 2-18032-2 | SCR,SKT SET(M3X10)DRAG | 52 |
| - | - | - | - | - | 51 |
| - | - | - | - | - | 50 |
| - | 1 | 1 | 18024-3 | SCR,BHC(M3X10)CAM | 49 |
| - | - | - | - | - | 48 |
| - | 1 | 1 | 1338676-1 | CAM, POST-FEED 30 & 40 mm ST | 47 |
| - | 1 | 1 | 1338662-1 | APPLICATOR, BASIC (SUBASSY) | 46 |
| - | 1 | 1 | 690191-1 | PLUG, NYLON | 45 |
| - | 1 | 1 | 1320998-1 | RAM | 44 |
| - | 1 | 1 | 690125-1 | WASHER, LAMINATED | 43 |
| - | 1 | 1 | 690124-1 | WASHER, RAM | 42 |
| - | 1 | 1 | 2-18024-6 | SCREW,BHC(M8X25)CRIMPER | 41 |
| - | 1 | 1 | 23241-1 | BALL, STEEL | 40 |
| - | 1 | 1 | 2-22278-7 | SPRING, COMPRESSION | 39 |
| - | 1 | 1 | 1320922-1 | DISC, INSULATION | 38 |
| - | 1 | 1 | 354777-1 | WIRE DISC, PLASTIC | 37 |
| - | 1 | 1 | 22480-5 | WASHER, SPRING | 36 |
| - | 1 | 1 | 690212-1 | POST, RAM | 35 |
| - | - | - | - | - | 34 |
| - | - | - | - | - | 33 |
| - | 9 | 9 | 18025-2 | WASHER,LOCK(M4)SHEAR BL | 32 |
| - | 2 | 2 | 1-18024-0 | SCR,BHC(M4X20)SHEAR PL | 31 |
| - | - | - | - | - | 30 |
| - | 2 | 2 | 18024-8 | SCR,BHC(M4X12)STRIPPER | 29 |
| - | 1 | 1 | 3-690451-2 | SPACER, STRIPPER | 28 |
| - | 1 | 1 | 240639-1 | STRIPPER | 27 |
| - | - | - | - | - | 26 |
| - | 2 | 2 | 1320906-1 | DRAG, STUD | 25 |
| - | 1 | 1 | 1-1320995-2 | PLATE, STRIP GUIDE | 24 |
| - | 1 | 1 | 240825-1 | PLATE, STRIP HOLD DOWN | 23 |
| - | 2 | 2 | 4-22281-1 | SPRING, DRAG | 22 |
| - | - | - | - | - | 21 |
| - | 1 | 1 | 1338665-1 | DRAG, STOCK | 20 |
| - | - | - | - | - | 19 |
| - | 2 | 2 | 1338663-3 | GUIDE, LOWER STRIP | 18 |
| - | 4 | 4 | 1-18024-8 | SCR,BHC(M6X12)STRIP GD PL | 17 |
| - | 1 | 1 | 1338708-1 | SPACER, SLUG BLADE | 16 |
| - | - | - | - | - | 15 |
| - | - | - | - | - | 14 |
| - | 1 | 1 | 2-690481-7 | SPACER, HOLD DOWN | 13 |
| - | 1 | 1 | 23846-1 | SPRING, HOLD DOWN | 12 |
| - | 1 | 1 | 1-240644-7 | PLATE, REAR SHEAR | 11 |
| - | - | - | - | - | 10 |
| - | 1 | 1 | 6-690482-1 | PLATE, FRONT SHEAR | 9 |
| - | 1 | 2 | 1-133214-5 | ANVIL | 8 |
| - | 1 | 1 | 1-690474-0 | BLADE, SLUG | 7 |
| - | 1 | 1 | 455892-7 | HOLD DOWN, TERMINAL | 6 |
| - | 1 | 1 | 3-240641-3 | SPACER, SLUG BLADE | 5 |
| - | 1 | 1 | 238009-1 | SPACER, BLOCK CRIMPER | 4 |
| - | 1 | 2 | 8-683453-3 | CRIMPER, INSULATION | 3 |
| - | 1 | 1 | 455888-7 | SPACER, CRIMPER | 2 |
| - | 1 | 2 | 1-456403-5 | CRIMPER, WIRE | 1 |
| -77 | -71 | -1 | PART NO | DESCRIPTION | ITEM NO |
| QTY REQD PER ASSY | | | | PARTS LIST | |

| | | | | |
|----------------------------------------|--------|----------------------------------------|-----------------------------------------------------------|--------------|
| THIS DRAWING IS A CONTROLLED DOCUMENT. | | DIN M. CLIFFORD 27JUL05 | Tyco Electronics Corporation Harrisburg, PA 17105-3608 | |
| DIMENSIONS: INCHES | | TOLERANCES UNLESS OTHERWISE SPECIFIED: | APVD: F. BACKHURST 27JUL05 | |
| 0 PLC | ± | - | NAME: F. BACKHURST | |
| 1 PLC | ± | - | PRODUCT SPEC | |
| 2 PLC | ± | - | APPLICATION SPEC | |
| 3 PLC | ± | - | SIZE | |
| 4 PLC | ± | - | CAGE CODE | |
| ANGLES | ± | - | DRAWING NO | |
| MATERIAL | FINISH | WEIGHT | A1 00779 | 1339775 |
| CUSTOMER DRAWING | | SCALE | | SHEET 1 OF 1 |
| | | | | REV A1 |