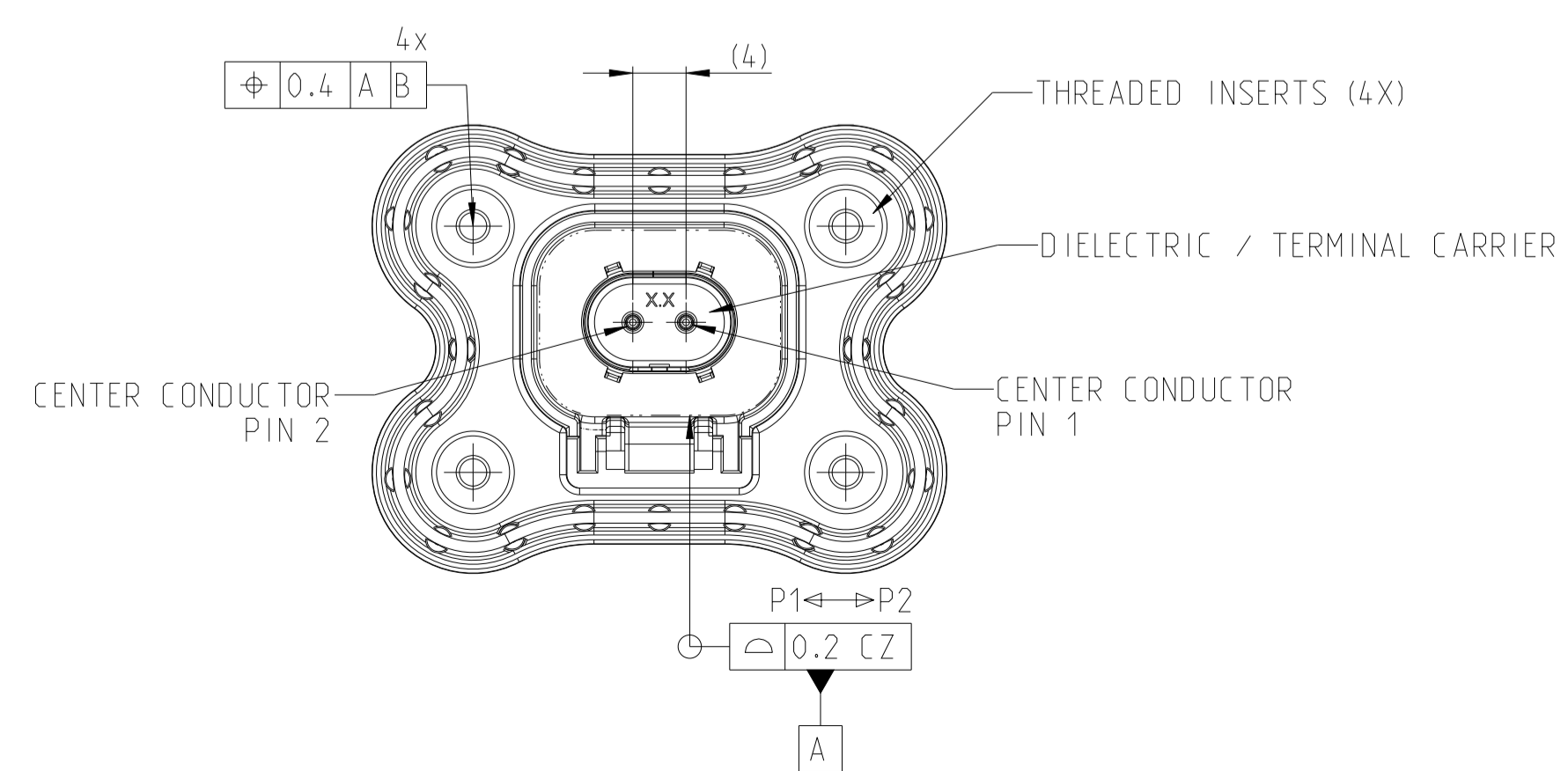
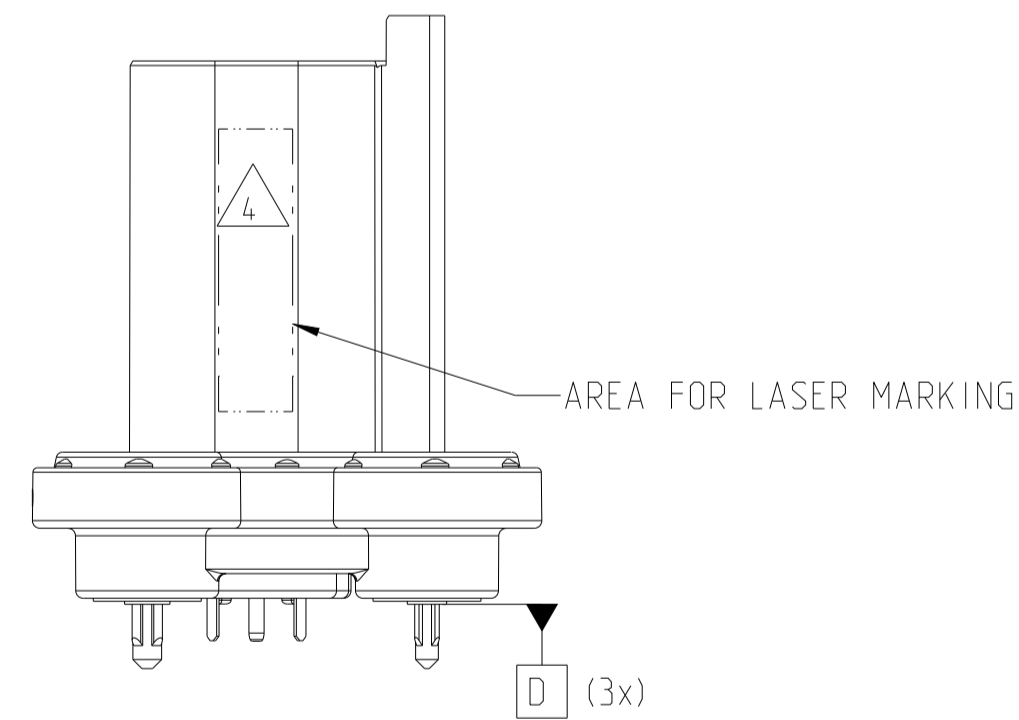
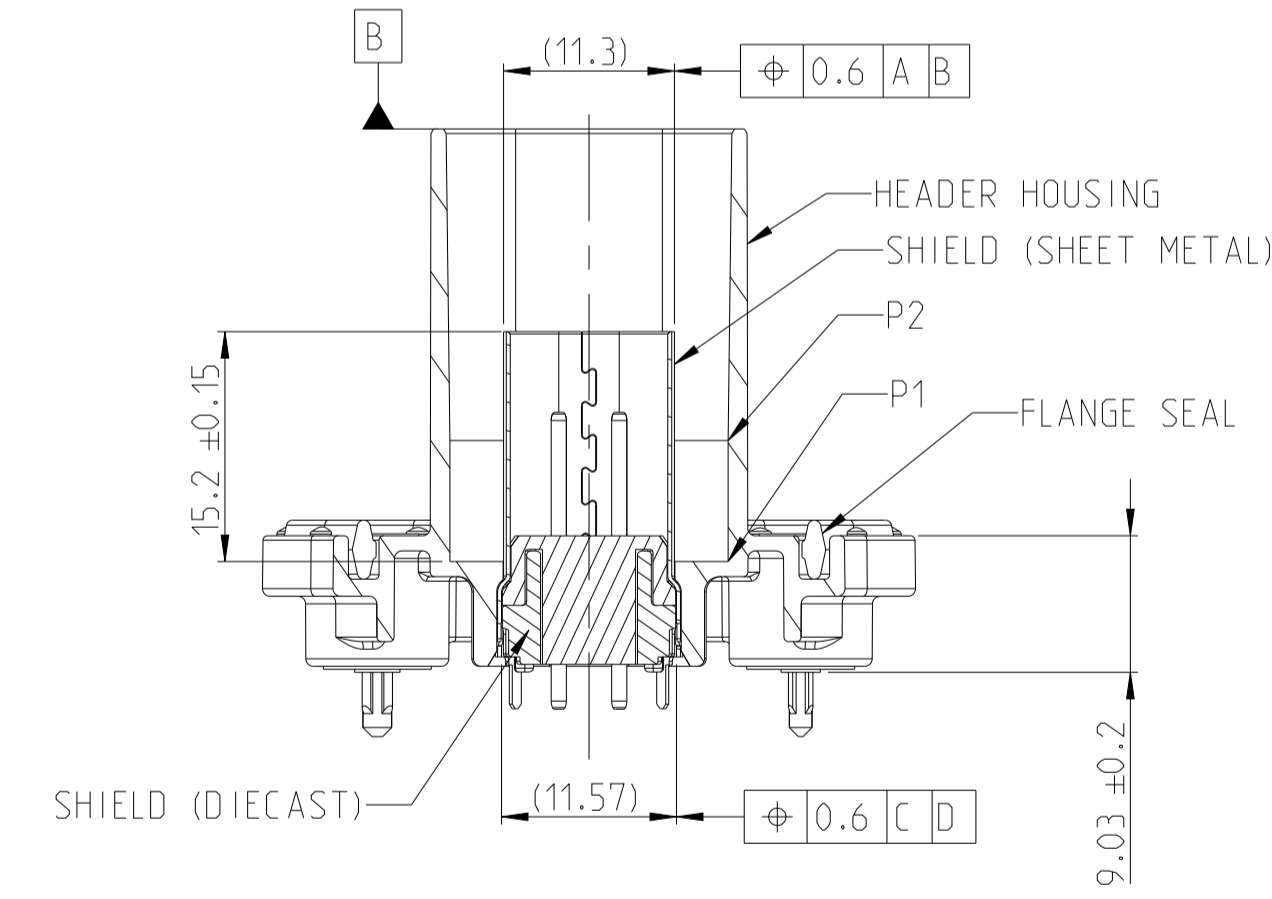
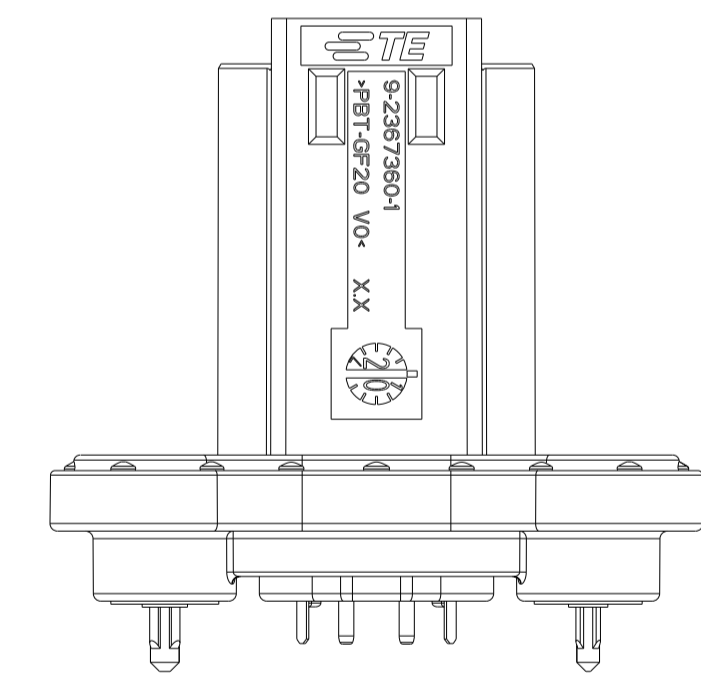


SECTION A-A



REVISIONS				
P	LTN	DESCRIPTION	DATE	APVD
A2		Coding B, C, D released	27AUG2021	KS JB
B		Coding changed for better efficiency	18MAR2022	SH JB
C		RELEASE PER ECN-22-167720	02AUG2022	DFS DFS
D		Code C updated and Corner radius improved	14MAR2023	VP VP

NOTES:

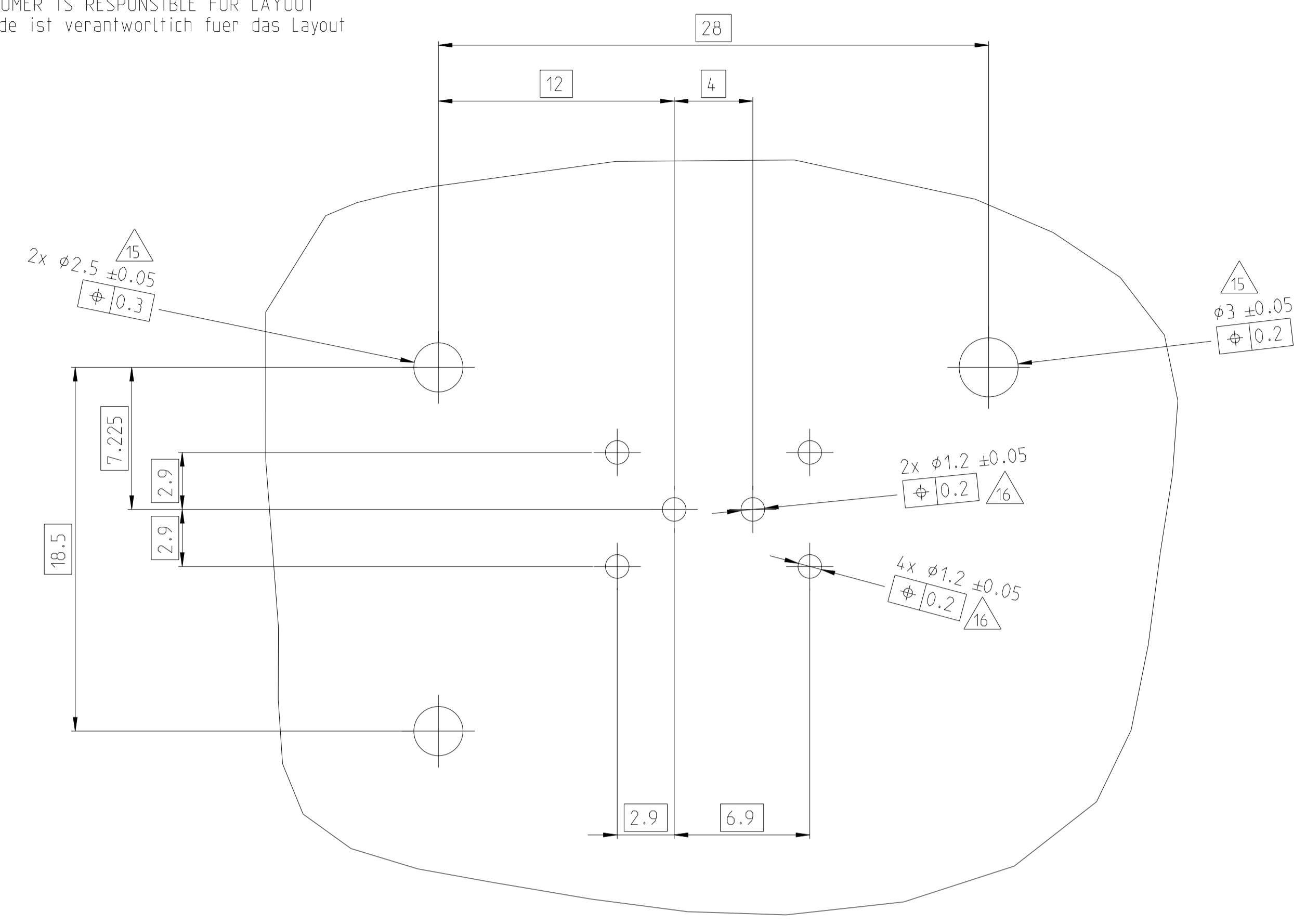
- MATERIALS:
 - HEADER HOUSING:
GENERIC TYPE: PBT GF20 / VO
COLOR: SEE TABLE
 - FLANGE SEAL:
GENERIC TYPE: SILICONE RUBBER
COLOR: BLACK
 - THREADED INSERTS:
GENERIC TYPE: BRASS
 - CENTER CONDUCTORS:
GENERIC BASE MATERIAL: BRASS
CONTACT REGION PLATING: GOLD
SOLDERTAIL PLATING: TIN
 - DIELECTRIC / TERMINAL CARRIER:
GENERIC TYPE: PBT-GF15
COLOR: BLACK
 - SHIELD (SHEET METAL):
GENERIC BASE MATERIAL: BRASS
PLATING: TIN
 - SHIELD BASE (DIECAST)
GENERIC BASE MATERIAL: ZAMAK 3
- DESIGN HAS BEEN OPTIMIZED FOR PCB THICKNESS= 1.6mm
- TO BE MATED WITH DT HIGH SPEED PLUG CONNECTOR 9-2367337-1/-2/-3/-4
- PRODUCTION DATE OF ASSEMBLY: DDDMMYYY 2 DIGIT DAY 3 LETTER MONTH 4 DIGIT YEAR E.G. 17NOV2016
ASSEMBLY PN X-XXXXXXX-X
- DIFFERENT CODINGS
- HEADER NOT SEALED IN THE UNMATED STATE

BLUE	D	9-2367359-4
GREEN	C	9-2367359-3
GREY	B	9-2367359-2
BLACK	A	9-2367359-1
HOUSING COLOR	CODE	TE ORDER NUMBER

THIS DRAWING IS A CONTROLLED DOCUMENT.		OWN: K. Schang 27MAR2020	
DIMENSIONS: mm		CHK: S. Helm 30MAR2020	
TOLERANCES UNLESS OTHERWISE SPECIFIED:		APVD: J. Barth 30MAR2020	NAME: DT Highspeed 180 Header Assy DT Highspeed 180 Messerleiste Bgr.
0 PLC ± 1 PLC ± 2 PLC ± 3 PLC ± 4 PLC ± ANGLES ±		PRODUCT SPEC: 108-94825 APPLICATION SPEC: 114-94706 WEIGHT: 10.05 g	
MATERIAL: -		FINISH: -	SIZE: A 00779 C=2367359 CUSTOMER DRAWING: - SCALE: 2:1 SHEET 1 OF 2 REV D

PCB LAYOUT
 Platinen Layout
 RECOMMENDED PCB LAYOUT / CUSTOMER IS RESPONSIBLE FOR LAYOUT
 Empfohlenes Platinen Layout / Kunde ist verantwortlich fuer das Layout

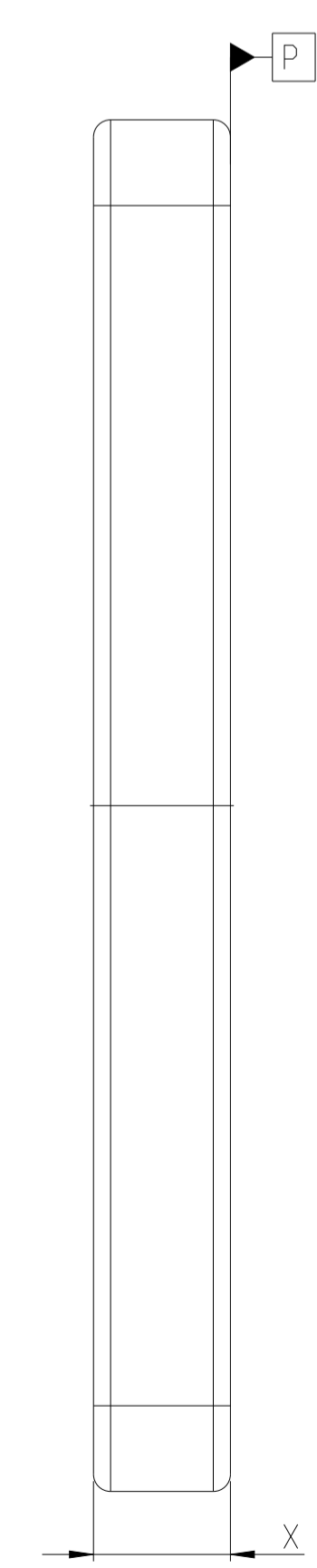
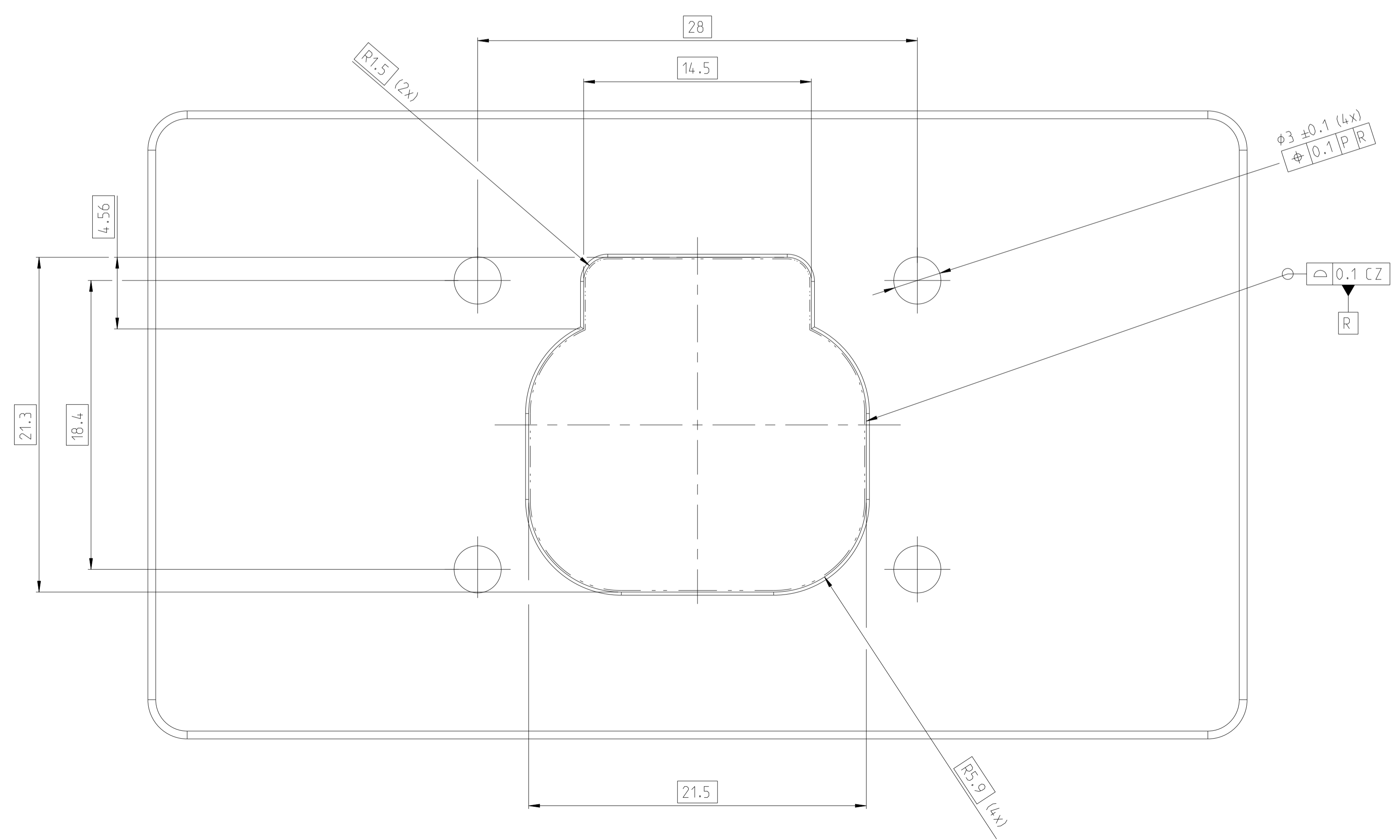
REVISIONS				
P	LTN	DESCRIPTION	DATE	APVD
-		SEE SHEET 1	-	-



NOTES:
 Bemerkungen:

- $\triangle 15$ Unplated holes
- $\triangle 16$ Printed through hole (Final diameter)

RECOMMENDED ECU LAYOUT / CUSTOMER IS RESPONSIBLE FOR LAYOUT
 Empfohlenes Steuergeraete Layout / Kunde ist verantwortlich fuer das Layout



NOTES:
 Bemerkungen:

- 14 SCREWS: M2.5x5 + PANEL THICKNESS
 Schrauben: M2.5x5 + Plattendicke Schrauben

THIS DRAWING IS A CONTROLLED DOCUMENT.		OWN K. Schang	27MAR2020	TE TE Connectivity
DIMENSIONS: mm		CHK S. Helm	30MAR2020	
	TOLERANCES UNLESS OTHERWISE SPECIFIED 0 PLC ± 1 PLC ± 2 PLC ± 3 PLC ± 4 PLC ± ANGLES ± FINISH ±	APVD J. Barth	30MAR2020	NAME DT Highspeed 180 Header Assy
		MATERIAL -		
		PRODUCT SPEC 108-94825		SIZE -
		APPLICATION SPEC 114-94706		CAGE CODE 00779
		WEIGHT 10.05 g		DRAWING NO C=2367359
		CUSTOMER DRAWING		RESTRICTED TO -
				SCALE 2:1
				SHEET 2 OF 2
				REV D