

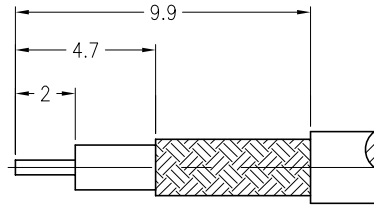
NOTES:

1. MATERIALS AND FINISHES(PLATING THICKNESS IN MICRO-INCHES):  
 BODY - BRASS, GOLD PLATING(.000010" MIN.)  
 CONTACT - BRASS, GOLD PLATING(.000030" MIN.)  
 INSULATOR - PTFE
2. ELECTRICAL:  
 A. IMPEDANCE: 50 OHM  
 B. FREQUENCY RANGE: DC 0-4 GHz  
 C. VSWR(RETURN LOSS): 1.2 (20.83 dB), MAX.  
 D. DIELECTRIC WITHSTANDING VOLTAGE: 1000 VRMS, MIN.
3. MECHANICAL:  
 A. DURABILITY: 500 CYCLES MIN.  
 B. TEMPERATURE RANGE: - 65°C to +165°C
4. CRIMPED FERRULE  
 HEX CRIMP SIZE .128"
5. CRIMPED CONTACT PIN  
 SQ. CRIMP SIZE 0.7(mm)

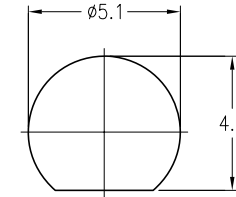
THIRD ANGLE PROJ.

REVISIONS

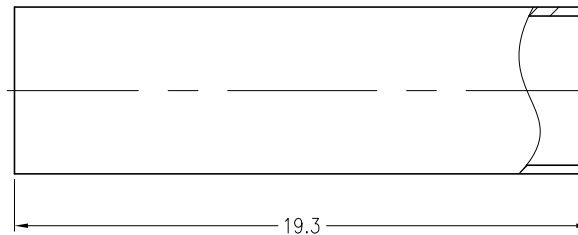
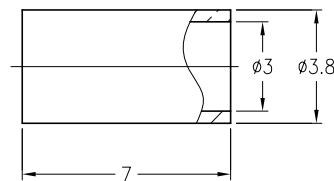
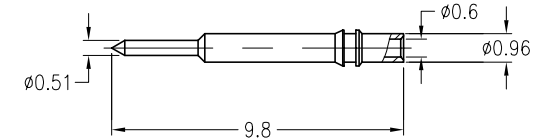
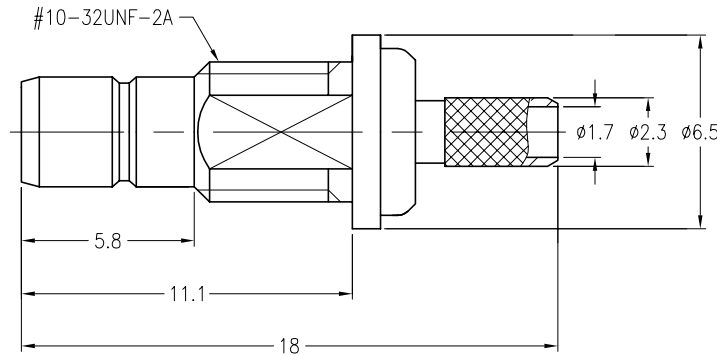
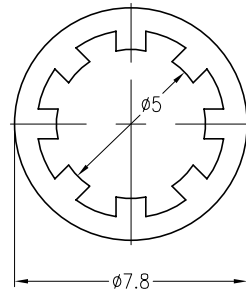
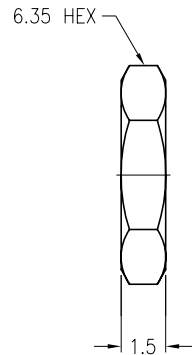
REV	DESCRIPTION	DATE	ECO	APPR
A	RELEASE TO MFG.			
A1	SEE SHEET 1	24-Mar-05		SH
C	SEE SHEET 1	17-Mar-09	47509	SH



RECOMMENDED  
CABLE STRIPPING DIM'S



RECOMMENDED  
MOUNTING HOLE



**CUSTOMER OUTLINE DRAWING**

ALL OTHER SHEETS ARE FOR INTERNAL USE ONLY

UNLESS OTHERWISE SPECIFIED, DIMENSIONS ARE IN METRIC AND TOLERANCES ARE:  
 0.5 - 6mm ±0.1mm    6 - 30mm ±0.2mm    30 - 120mm ±0.3mm    ANGLES ±1'

NOTICE - These drawings, specifications, or other data (1) are, and remain the property of Amphenol Corp. (2) must be returned upon request; and (3) are confidential and not to be disclosed to any person other than those to whom they are given by Amphenol Corp. The furnishing of these drawings, specifications, or other data by Amphenol Corp., or to any other person to anyone for any purpose is not to be regarded by implication or otherwise in any manner licensing, granting rights or permitting such holder or any other person to manufacture, use or sell any product, process or design, patented or otherwise, that may in any way be related to or disclosed by said drawings, specifications, or other data.

MATERIAL	DRAWN	DATE	TITLE			Amphenol RF		
	J.YANG	24-Mar-05	SMB BULKHEAD CRIMP JACK			Danbury CT USA, Tainan Taiwan, Shenzhen China		
	ENGINEER	DATE	(FOR RG-174/U,188A/U,316/U)			www.amphenolrf.com		
	S.HSIEH	24-Mar-05				DRAWING NO. SMB1421A1-10GT30G-316U-50		
REFERENCE	APPROVED	DATE	SCALE: 4/1	SHEET 2 OF 2		ITEM NO. 121421AAA36GM5F		
	S.HSIEH	24-Mar-05	DWG SIZE	CODE ID	REV	PART NO. 903-505J-51S		
FINISH	F:\DWG\SMB\1421A1\316U-50\10GT30G-CSZ		B	74868	C			