



- ⊕ Water and dustproof to IP68 when mated
- ⊕ IP68 rating tested at 1.054kg/sq cm (15lb/sq in) 10m depth for 2 weeks
- ⊕ 2, 3, 4 or 6 Contact screw terminal inserts
- ⊕ 3 or 8 Contact solder or crimp inserts
- ⊕ 5 body styles, Flex, Inline, Panel (2 styles), Panel Side Entry
- ⊕ 50Ω or 75Ω BNC (Bayonet Neill–Concelman) inserts
- ⊕ 5A, 380V AC 3 & 8 way solder/crimp terminals
- ⊕ 10A, 250V AC 2 & 3 way screw terminals
- ⊕ 6A, 250V AC 4 way screw terminal
- ⊕ 3A, 250V AC 6 way screw terminals
- ⊕ EN60068-2-52 Test Kb Salt Mist (Cyclic) Marine Severity Level 1
- ⊕ Plug or socket connection in each body style
- ⊕ Cable range from 3.5mm - 9mm
- ⊕ Diameter over coupling ring 26mm
- ⊕ Positive locating keyways - cannot be mis-mated
- ⊕ Sealing caps available to maintain IP68 rating of unmated connectors
- ⊕ Flammability rating UL94V-0 material
- ⊕ Leading earth Plug is on 3, 4 & 6 Contact screw terminal versions only
- ⊕ Compact design
- ⊕ Easy assembly - no special tools required on screw terminal versions
- ⊕ UL approval

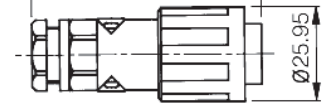
Flex Cable Connector Body



PX0800 - shown with insert

- PX0800 Connector body
- Mates with Inline or Panel Mounting versions
- Screw locking ring
- Suitable for Plug or Socket inserts
- Cable Acceptance 3.5-9mm (Standard 5-7mm)
- Contact inserts supplied separately

61.5 Max. Depending on Cable Dia. / Pin or Socket Carrier.



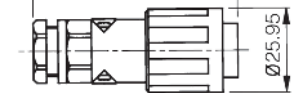
Inline Cable Connector Body



PX0801 - shown with insert

- PX0801 Connector body
- Mates with PX0800 - Flex Cable connector
- Suitable for Plug or Socket inserts
- Cable Acceptance 3.5-9mm (Standard 5-7mm)
- Contact inserts supplied separately

61.5 Max. Depending on Cable Dia. / Pin or Socket Carrier.



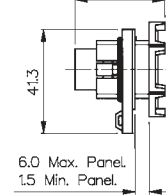
Rear Panel Mounting Body



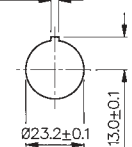
PX0802 - shown with insert

- PX0802 Connector body
- Mates with PX0800 - Flex Cable connector
- Single hole fixing
- Suitable for Plug or Socket inserts
- Contact inserts supplied separately

37.0 Max. Depending on Pin or Socket Carrier.



3.2_{±0.1}



Fixing Details.

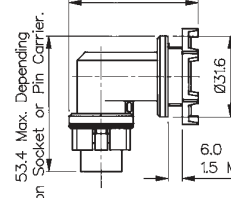
Panel Mounting Right Angle Body



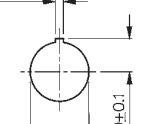
PX0803 - shown with insert

- PX0803 Connector body
- Mates with PX0800 - Flex Cable connector
- Right angle cable entry
- Single hole fixing
- Suitable for Plug or Socket inserts
- Contact inserts supplied separately

53.4 Max. Depending on Panel Thickness.



3.2_{±0.1}



Fixing Details.

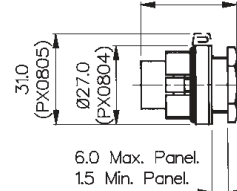
Rear Panel Mounting Body



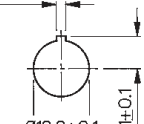
PX0805 - shown with insert

- PX0804 and PX0805 Connector bodies
- Mates with PX0800 - Flex Cable connector
- PX0804 without sealing cap retaining clip, PX0805 with sealing cap retaining clip
- Single hole fixing
- Suitable for Plug or Socket inserts
- Contact inserts supplied separately

32.8 Max. Depending on Pin or Socket Carrier.



3.2_{±0.1}



Fixing Details.

Screw Terminal Inserts



- 2, 3, 4 and 6 Contacts
- Fits all Body Styles
- Leading Earth Plug on 3, 4 and 6 Contact inserts
- Nickel Plated contacts

Screw Terminal Inserts - fits all body styles

No. Contacts	Sockets	Plugs
2	SA3319	SA3320
3	SA3229	SA3230
4	SA3242	SA3241
6	SA3244	SA3243

Contact Carrier Inserts



Inserts shown with contacts fitted

- For Solder or Crimp Contacts
- 3 or 8 Plug
- Fits all Body Styles
- Contacts Supplied Separately

Solder & Crimp Contact Carrier Inserts - fit all body styles.

No. Contacts	Solder	Colour	Crimp	Colour
3 Plug	12734/3/1	Black	12734/3	Grey
3 Socket	12735/3/1	Black	12735/3	Grey
8 Plug	12734/1	Black	12734	Grey
8 Socket	12735/1	Black	12735	Grey

Contacts, Polarising/Blanking Plugs



- Gold Plated contacts
- Solder or Crimp
- Polarising/Blanking Plugs

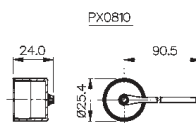
Contacts - Solder & Crimp - for contact carrier inserts

Contacts (Supplied in packs of 10)	Solder	Crimp
Plugs	SA3148/1	SA3148
Sockets	SA3149/1	SA3149
Polarising/Blanking Plugs	SA3147	
Contact Insertion Tool: Must be used to load contacts into inserts.	SA3150	
Crimping Tool	SA2800	

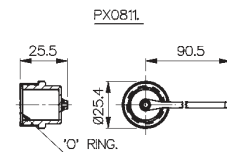
Sealing Caps



To maintain IP rating



PX0810
Fits PX0801, PX0802, PX0803, PX0804 & PX0805. Ensure "O" Ring is in place on main body.



PX0811
Fits PX0800. Ensure "O" Ring is in place in cap.



Electrical	Solder/Crimp Terminals	Screw Terminals	BNC
No Contacts:	3, 8	2, 3	6
Current Rating:	5A	10A	3A
Voltage Rating:	380V AC	250V AC	250V AC
Contact Resistance:	<5mΩ	4	6
Insulation Resistance:	>10 ⁹ MΩ @ 500V DC	6A	3A
Voltage Proof:	2kV @ 50Hz	250V AC	250V AC
Operating Temp. Range:	-20°C to +70°C		

Approvals:
 E214972

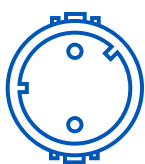
Materials	Solder/Crimp Terminals	Screw Terminals	BNC
Body Mouldings:	Polyamide UL94V-0	Polyamide UL94V-0	
Inserts:	Polyamide UL94V-0	Polyamide UL94V-0	
Contacts:	Copper Alloy, Gold Plated (0.1µm) on Nickel	Brass, Nickel Plated	Brass, Silver Plated.
O Rings:	Nitrile		
RoHS	Compliant	Compliant	Compliant

Mechanical	Solder/Crimp Terminals	Screw Terminals	BNC
Sealing:	Protection Classification IP68, EN 60529:1992+A2:2013 Tested @ 1.054kg/sq.cm. (15lb/sq.in.) 10m depth for 2 weeks.		
Salt Mist:	EN60068-2-52 Test Kb Salt Mist (Cyclic) Marine Severity Level 1		
Cable Acceptance	5-7.00mm dia - standard gland 3.5-9.00mm dia - alternative glands		
Contact Accommodation:	0.2 - 0.5mm ² (20 - 24 AWG)	1mm ² max (18 AWG)	50Ω: RG58/CU, URM43, URM76 75Ω: URM70
Insertion Force (typical):	3 way: 5N (1.1lbf) 8 way: 14N (3.1lbf)	3 way: 45N (10lbf) 4 way: 50N (11lbf) 6 way: 140N (31lbf)	
Withdrawal Force (typical):	3 way: 3N (0.66lbf) 8 way: 12N (2.6lbf)	3 way: 32N (7lbf) 4 way: 40N (9lbf) 6 way: 150N (34lbf)	
Tightening Torques			
Gland Nut, PX0800, 801:	1.13Nm (10lbf in)		
Rear Nut, PX0802, 803, 804, 805:	0.7Nm min, 1.7Nm max (6.2lbf in min, 15lbf in max)		
Sealing Cap, PX0810, 811:	0.23Nm min, 1.13Nm max (2lbf in min, 10lbf in max)		

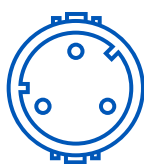
How to order	Cable Glands
<input type="checkbox"/> Choose body type, check cable diameter and sealing gland size.	Cable gland for 5-7mm fitted as standard. BNC Insert Kit includes gland & washer to fit coax cable.
<input type="checkbox"/> Determine contact carrier inserts. Choose number of Contacts, and type of contacts (solder, crimp, screw terminal or BNC).	
<input type="checkbox"/> Choose Plugs or sockets. Solder and crimp contacts are supplied separately in packs of ten.	
<input type="checkbox"/> Choose polarising/blanking Plugs. If required for solder/crimp contact inserts. Supplied in packs of ten.	
<input type="checkbox"/> Is an insertion tool required (for solder or crimp contacts)?	
<input type="checkbox"/> Is a crimp tool required?	
<input type="checkbox"/> Is a sealing cap required?	

Cable Diameter	Gland Part No.	Gland Colour	Additional Suffix
5-7mm	12023/1	White	Fitted as standard
3.5-5mm	SA3426	Grey	Suffix /04†
6-8mm	12023	Black	Suffix /06
7-9mm	12023/2	Yellow	Suffix /07
Gland Pack	PX0812	Pack of 3 glands to suit cables 3.5-5mm, 6-8mm, 7-9mm dia†	

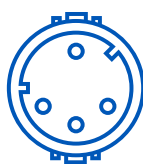
To order body with alternative cable gland add suffix to part no. e.g. PX0800/06 = PX0800 body with cable gland to suit 6-8mm dia. cable.
 †Includes additional black gland cage for 3.5-5mm dia. cable range.



2 Contact
(10 Amp)



3 Contact
(10 Amp)



4 Contact
(6 Amp)



6 Contact
(3 Amp)



8 Contact
(5 Amp)