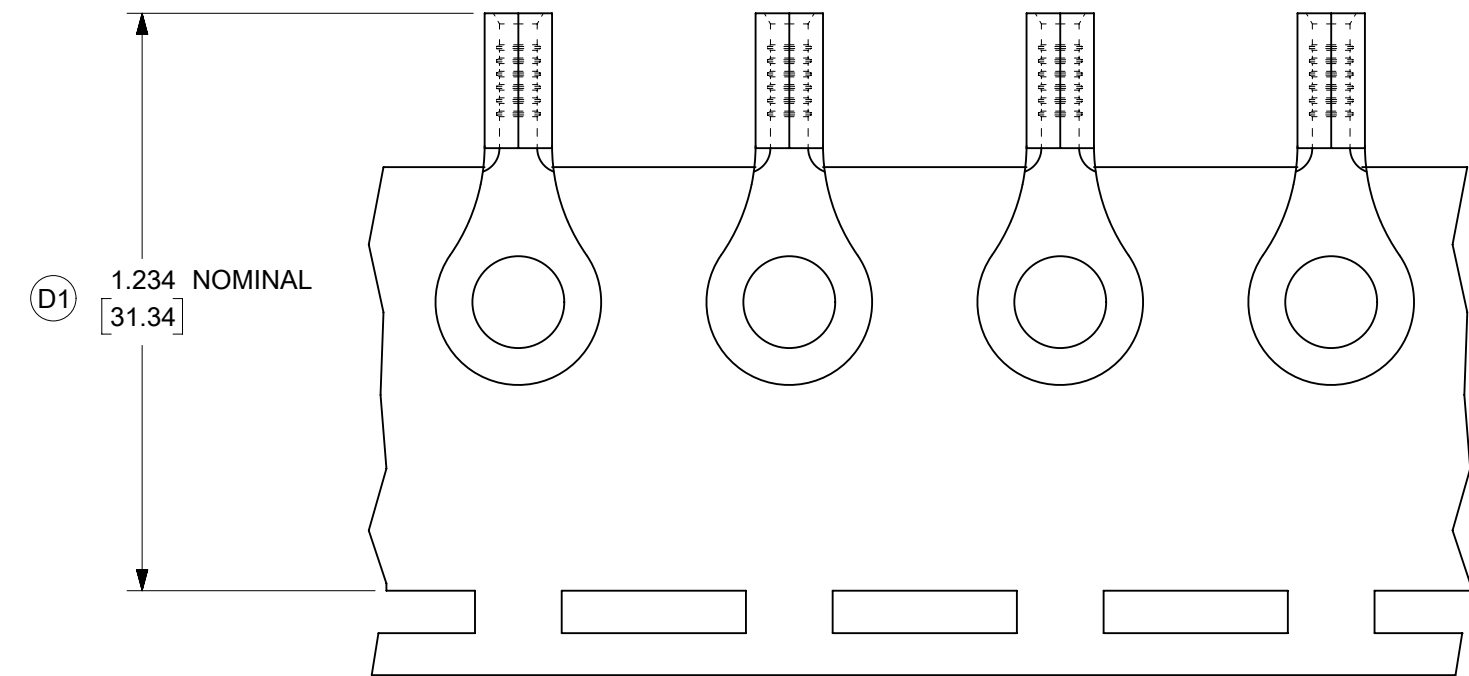
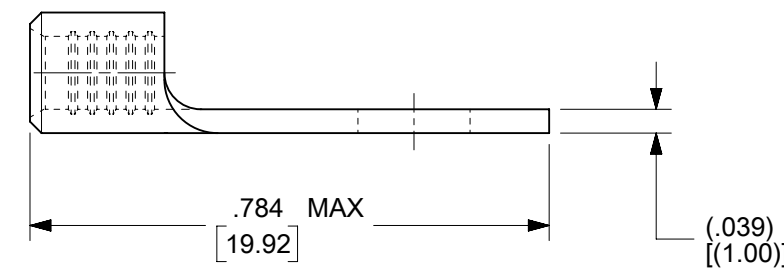
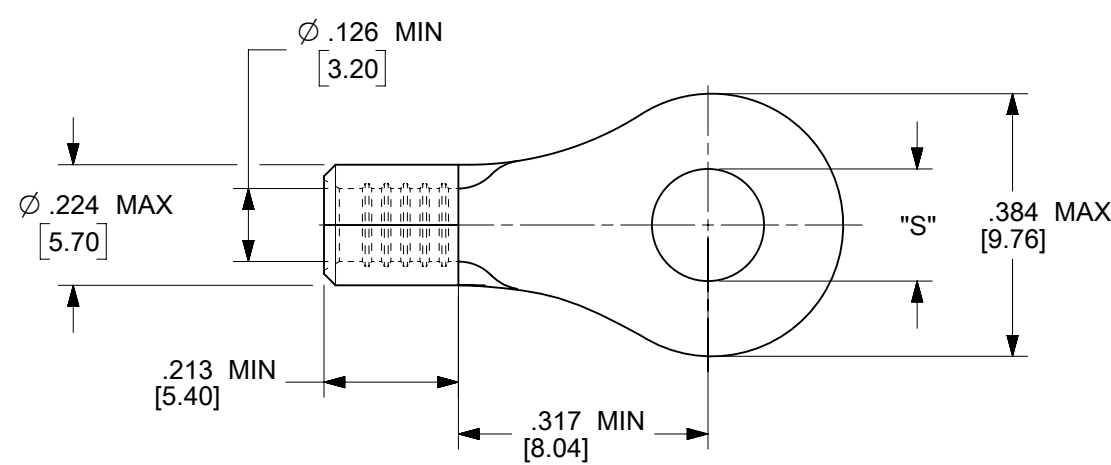


MATERIAL NO.	ENG. NO.	STUD SIZE	"S" MAX	DESCRIPTION
192030389	19203-0389	10	.212/5.38	LOOSE
192030094	C-S-128-10T	10	.212/5.38	TAPE



PARTS ON TAPE

NOTES:

1. MATERIAL: STEEL
2. WIRE SIZE: 12-10 AWG (4.0-6.0 MM<sup>2</sup>)
3. FINISH: NICKEL PLATED WITH OPTIONAL COPPER FLASH UNDERPLATING, IS ALLOWED FOR IMPROVED ADHESION.
4. PART IS ROHS COMPLIANT.
5. AMBIENT OPERATING TEMPERATURE UP TO 900 °F (483 °C).

D1

THIS DRAWING CONTAINS INFORMATION THAT IS PROPRIETARY TO MOLEX ELECTRONIC TECHNOLOGIES, LLC AND SHOULD NOT BE USED WITHOUT WRITTEN PERMISSION											
FUNCTIONAL SYMBOLS	DIMENSION UNITS	SCALE	CURRENT REV DESC: REMASTERED IN ECTR AND UPDATED NOTE								
	IN/MM	4:1	<p><b>molex</b></p> <p>RING TONGUE TERMINAL, 12-10 AWG, KRIMPTITE, 900 DEG F (483 DEG C)</p> <p>PRODUCT CUSTOMER DRAWING</p> <p>EC NO: 708789 DRWN: PAWANC 2022/05/12 CHKD: DMYRICK 2022/06/01 APPR: JMACNEIL 2022/06/02</p> <p>INITIAL REVISION: DRWN: DMYRICK 2005/04/06 APPR: RDEROSS 2005/04/06</p> <p>DRAFT WHERE APPLICABLE MUST REMAIN WITHIN DIMENSIONS</p>								
GENERAL TOLERANCES (UNLESS SPECIFIED)											
	MM	INCH									
	4 PLACES	±									
	3 PLACES	±									
DIVISIONAL SYMBOLS	2 PLACES	±	DOCUMENT NUMBER								
	1 PLACE	±	SD-19203-018			DOC TYPE	DOC PART	REVISION			
	0 PLACES	±	PSD 001 D1								
ANGULAR TOL		± °	THIRD ANGLE PROJECTION		DRAWING	SERIES	MATERIAL NUMBER	CUSTOMER	SHEET NUMBER		
			B-SIZE		19203	SEE CHART	GENERAL MARKET	1 OF 1			