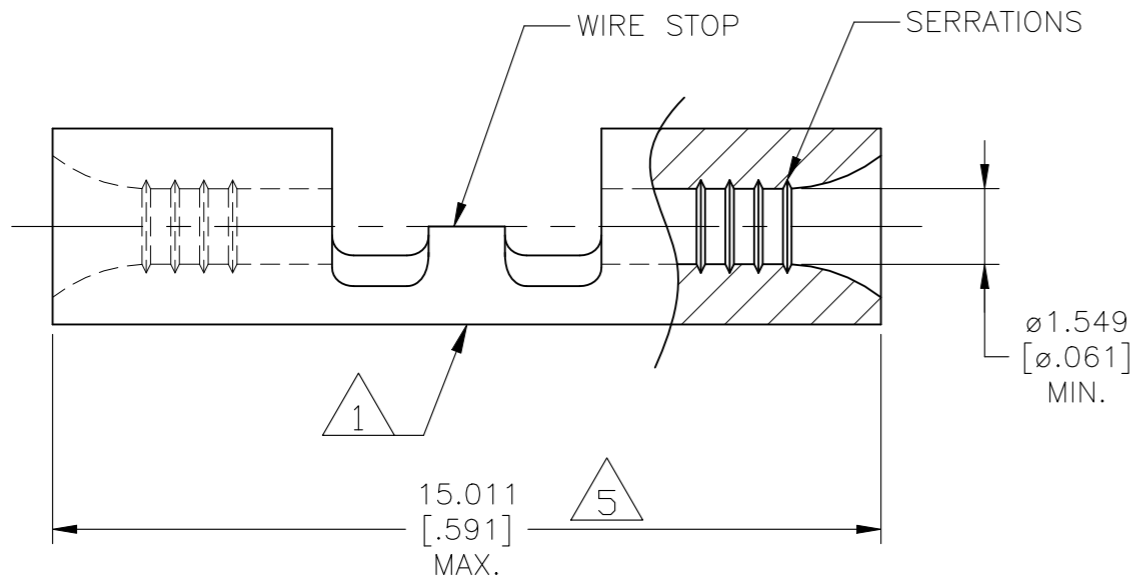
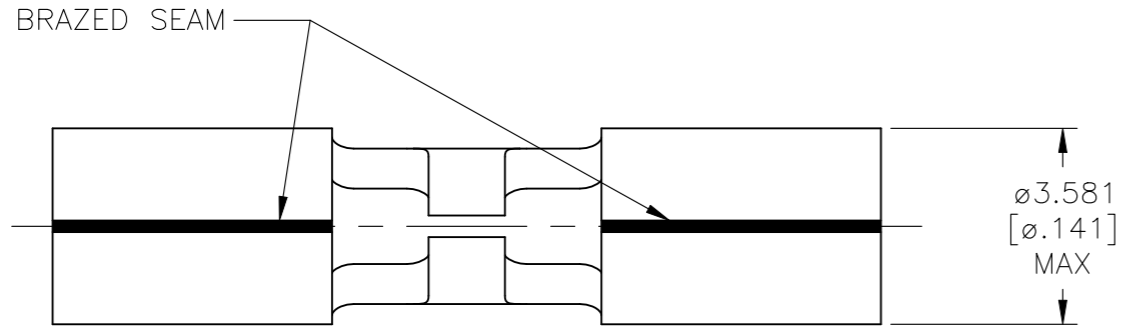


P	LTR	DESCRIPTION	DATE	DWN	APVD
	A	REVISED (ECR-22-161842)	10JAN2023	LP	DSC



- 1 STAMP AMP 18-16 APPROX AS SHOWN
- 2. BODY MATERIAL THK: 0.787±0.051[.031±.002]
- 3 MATERIAL:  
COPPER PER ASTM B152, ANNEALED
- 4 FINISH:  
GOLD PLATE 0.00127[.00005] MIN EXT THK PER ASTM B488, TYPE 1, CODE C  
OVER NICKEL PLATE 0.00076[.00003] MIN EXT THK PER SAE AMS-QQ-N-290  
OVER CU FLASH PER SAE AMS2418
- 5 MAXIMUM LENGTH DOES NOT INCLUDE MANUFACTURING TABS

1000	LOOSE PIECE	328592
QTY	PACKAGE TYPE	PART NO.

AMP INCORPORATED  
CUSTOMER SERVICE SYSTEMS

MAX RECOMMENDED OPERATING TEMPERATURE:  
260°C [500°F] MAX

FOR ADDITIONAL PRODUCT INFORMATION OR COPIES OF DRAWINGS AND TECHNICAL DOCUMENTS

PRODUCT INFORMATION CENTER  
1-800-522-6752

VOLTAGE RATING:  
NOT APPLICABLE

FOR APPLICATION TOOLING INFORMATION

TOOLING ASSISTANCE CENTER  
1-800-722-1111

WIRE CROSS SECTIONAL AREA RANGE:  
0.65-1.65mm<sup>2</sup> [1289-3260]  
SOLID OR STRANDED

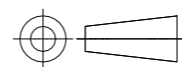
FOR ORDER ENTRY

1-800-526-5142

THIS DRAWING IS A CONTROLLED DOCUMENT FOR AMP INCORPORATED. IT IS SUBJECT TO CHANGE AND THE CONTROLLING ENGINEERING ORGANIZATION SHOULD BE CONTACTED FOR THE LATEST REVISION.

THIS DRAWING IS A CONTROLLED DOCUMENT.

DIMENSIONS:  
mm [INCHES]



TOLERANCES UNLESS OTHERWISE SPECIFIED:

0 PLC	± -
1 PLC	± -
2 PLC	± -
3 PLC	± 0.127[.005]
4 PLC	± -
ANGLES	± -

MATERIAL



FINISH



DWN 09JAN2023  
LINGANATHAN P.

CHK 09JAN2023  
SUVARNA, CHETHAN D

APVD 09JAN2023  
SUVARNA, CHETHAN D

PRODUCT SPEC

APPLICATION SPEC

WEIGHT -

CUSTOMER DRAWING

NAME  
SPLICE, BUTT, SOLISTRAND,  
WIRE SIZE: 18-16 AWG

SIZE	CAGE CODE	DRAWING NO	RESTRICTED TO
A3	00779	C-328592	-



SCALE 5:1 SHEET 1 OF 1 REV A