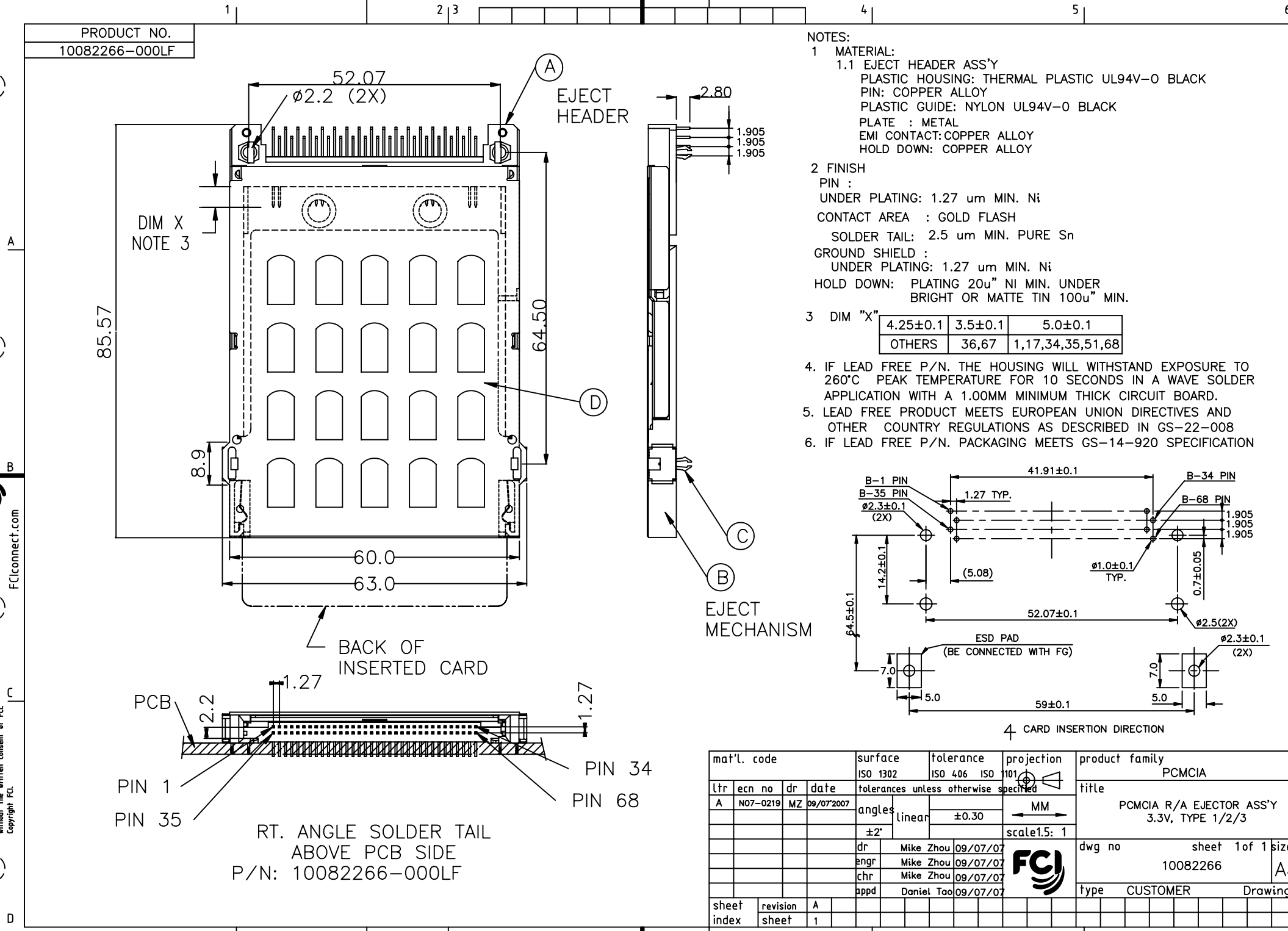


FCI CONFIDENTIAL



This document is the property of and embodies CONFIDENTIAL and PROPRIETARY information of FCI. No part of the information shown on this document may be used in any way or disclosed to others without the written consent of FCI. Copyright FCI.



| | | | | | | | | | |
|-------------|--|------------------|--|---------------------------|--|---------------------|--|--|--|
| mat'l. code | | surface ISO 1302 | | tolerance ISO 406 ISO 101 | | projection | | product family | |
| ltr | | ecn no | | dr | | date | | PCMCIA | |
| A | | N07-0219 | | MZ | | 09/07/2007 | | title | |
| | | | | angles | | linear | | PCMCIA R/A EJECTOR ASS'Y 3.3V, TYPE 1/2/3 | |
| | | | | ±2' | | ±0.30 | | MM | |
| | | | | dr | | Mike Zhou 09/07/07 | | scale 15: 1 | |
| | | | | enrg | | Mike Zhou 09/07/07 | | dwg no | |
| | | | | chr | | Mike Zhou 09/07/07 | | sheet 1 of 1 size | |
| | | | | appd | | Daniel Tao 09/07/07 | | 10082266 A4 | |
| | | | | | | | | type CUSTOMER Drawing | |
| sheet index | | revision sheet | | A | | 1 | | | |