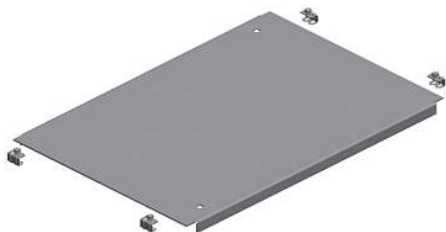


Product data sheet

Characteristics

NSYEC612

Spacial SF plain cable gland plate - fixed by clips - 600x1200 mm



Main

Range	Spacial
Product or Component Type	Cable gland plate
Accessory / separate part category	Cable management accessory
Range compatibility	Spacial SF
Mounting Location	Enclosure bottom
Cable gland type	Standard
Cable entry	Plain
Device composition	Fixing elements 1 plate
Quantity per Set	Set of 1
Material	Galvanised steel

Complementary

Height	0.79 in (20 mm)
Width	Nominal 23.62 in (600 mm) Useful 16.38 in (416 mm)
Depth	Nominal 47.24 in (1200 mm) Real 43.54 in (1106 mm)
Thickness	0.06 in (1.5 mm)

Ordering and shipping details

Category	80036-ENCLOSURE SYSTEMS ACCESSORIES
Discount Schedule	ES1
GTIN	3606480064111
Nbr. of units in pkg.	1
Package weight(Lbs)	15.83 lb(US) (7.18 kg)
Returnability	No
Country of origin	FR

Packing Units

Unit Type of Package 1	PCE
Package 1 Height	0.79 in (2.0 cm)
Package 1 width	17.48 in (44.4 cm)
Package 1 Length	43.54 in (110.6 cm)

Contractual warranty

Warranty	18 months
----------	-----------

The information provided in this documentation contains general descriptions and/or technical characteristics of the performance of the products contained herein. This documentation is not intended as a substitute for and is not to be used for determining suitability or reliability of these products for specific user applications. It is the duty of any such user or integrator to perform the appropriate and complete risk analysis, evaluation and testing of the products with respect to the relevant specific application or use thereof. Neither Schneider Electric Industries SAS nor any of its affiliates or subsidiaries shall be responsible or liable for misuse of the information contained herein.