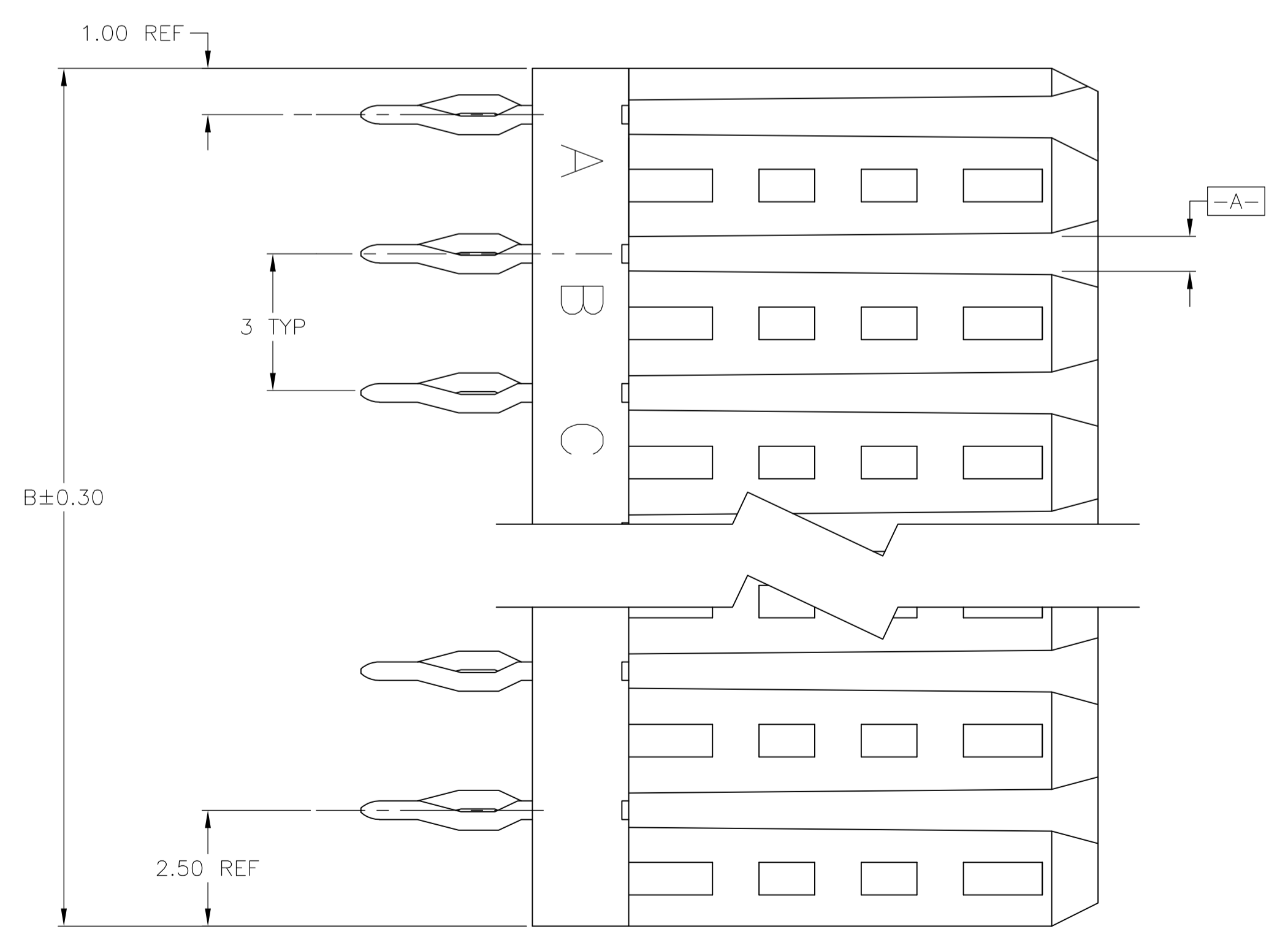
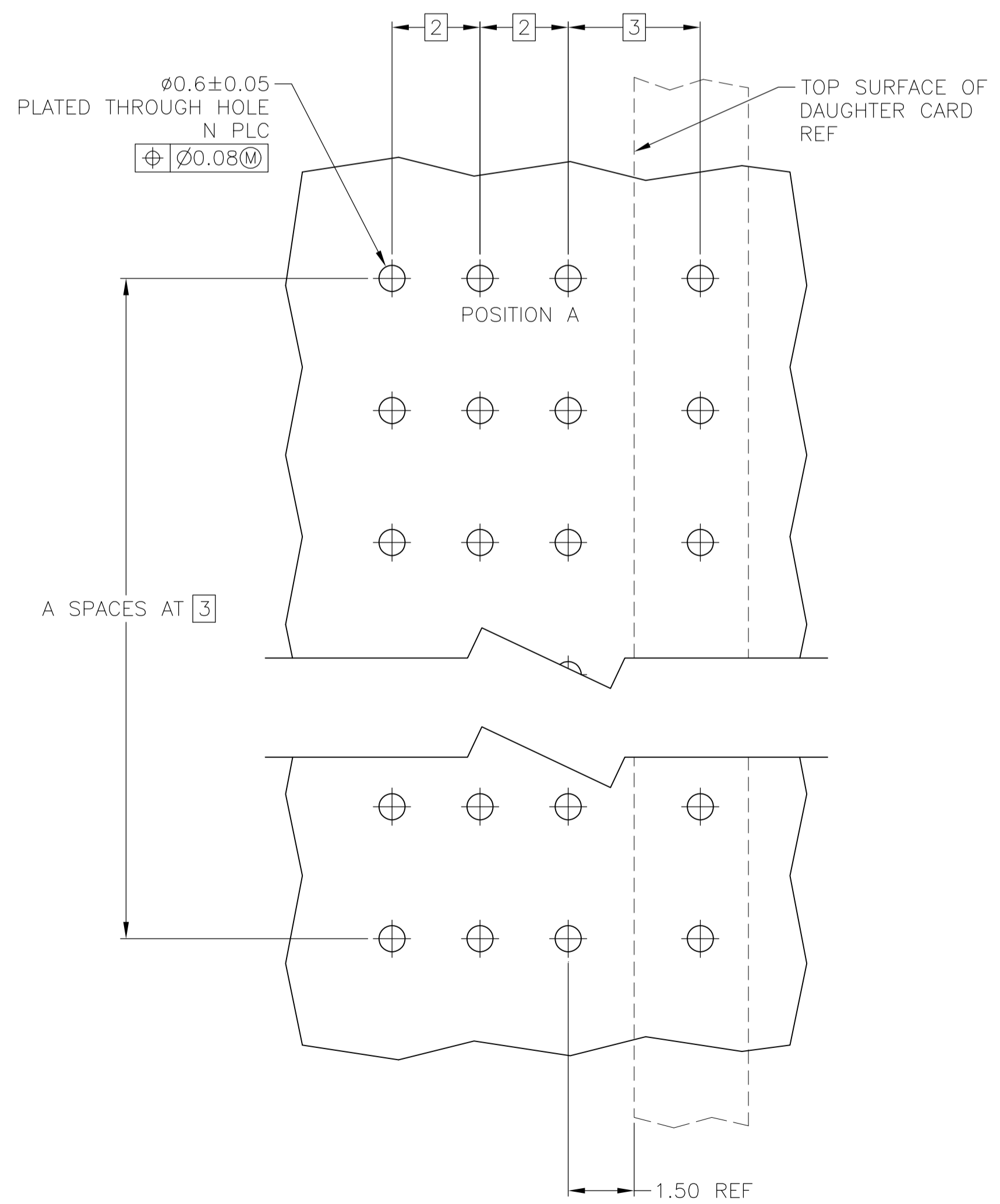
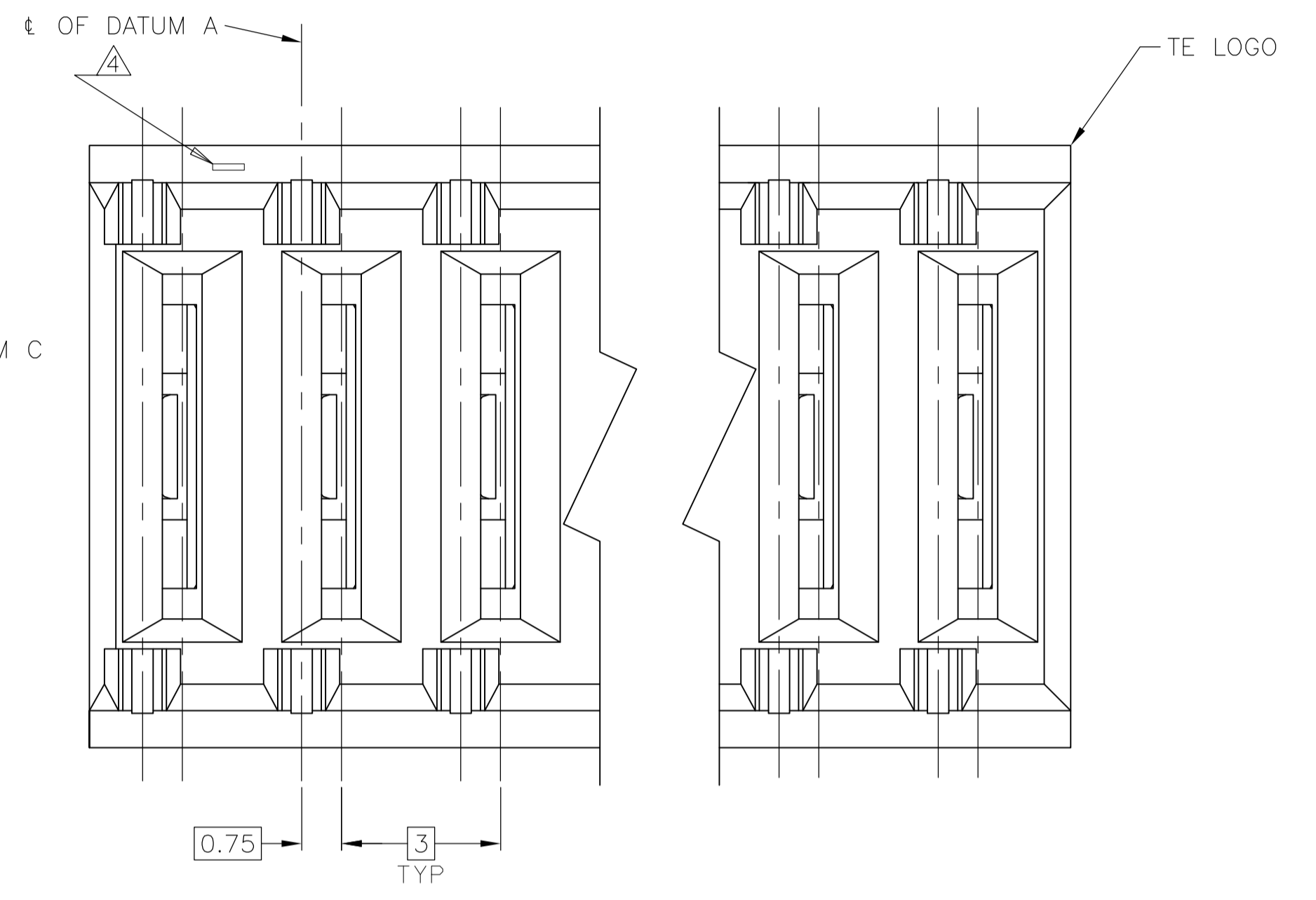
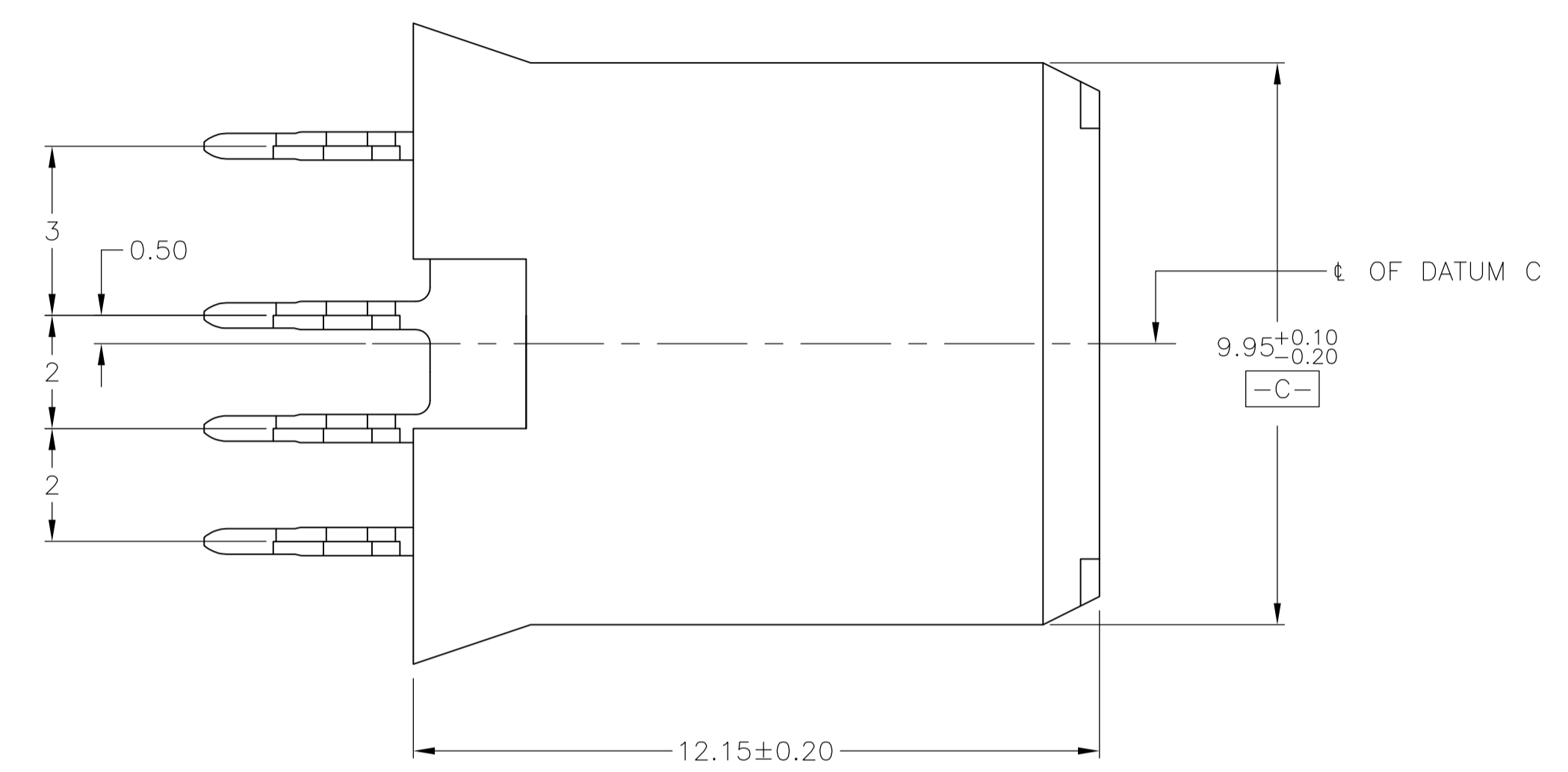
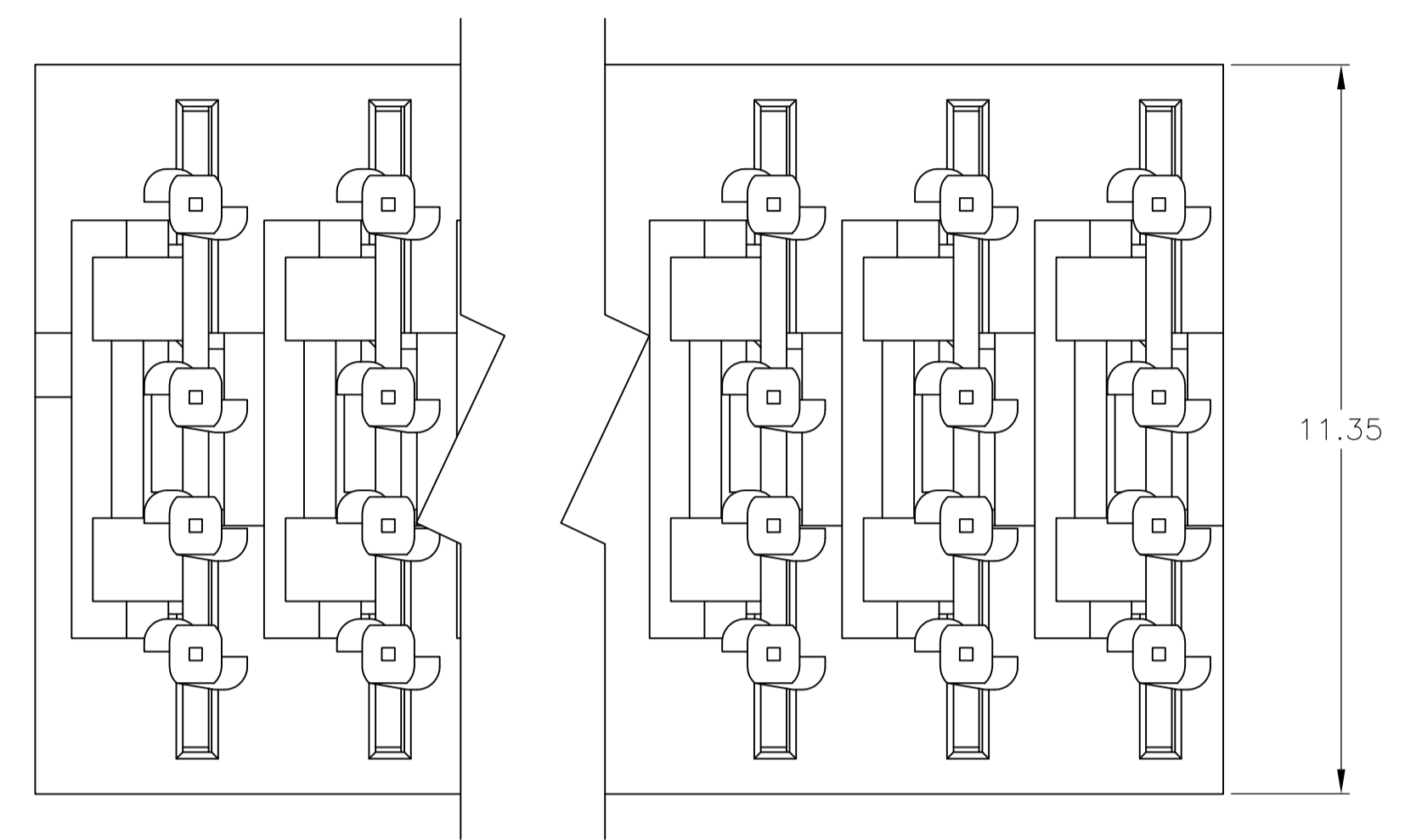


LOC		DIST		REVISIONS			
P	LTR	DESCRIPTION	DATE	DN	APVD		
D		RELEASED PER ECR-15-005801	14APR2015	ML	S.Y		

- ① MATERIAL: HOUSING : POLYESTER, COLOR, GRAY.
CONTACT: PHOSPHOR BRONZE.
- ② FINISH: CONTACT MATING AREA: 1.27um MIN GOLD PLATE,
ACTION PIN AREA, 0.5um MIN TIN PLATE,
ALL OVER 1.27um MIN NICKEL UNDERPLATE.
- ③ DIMENSION APPLIES AFTER CONNECTOR IS APPLIED TO PC BOARD.
- ④ ASSEMBLY TO BE MARKED WITH D/C, IN APPROXIMATE AREA SHOWN.
- ⑤ FINISH: CONTACT MATING AREA: 0.0762um MIN GOLD PLATE OVER 0.305 um MIN PdNi.
ACTION PIN AREA: 0.5um MIN TIN PLATE,
ALL OVER NICKEL 1.27um MIN UNDERPLATE.



RECOMMENDED PCB HOLE LAYOUT

FINISH	POSITION	B REF	A	PART NUMBER	
⑤	32	8	24.5	7	1-292284-8
⑤	24	6	18.5	5	1-292284-6
⑤	16	4	12.5	3	1-292284-4
②	44	11	33.5	10	1-292284-1
②	32	8	24.5	7	292284-8
②	24	6	18.5	5	292284-6
②	16	4	12.5	3	292284-4
②	12	3	9.5	2	292284-3

THIS DRAWING IS A CONTROLLED DOCUMENT.

DIMENSIONS:	TOLERANCES UNLESS OTHERWISE SPECIFIED:	DIN	170CT2003	STE	TE Connectivity
mm	0 PLC ± -	CHK	Roy_Hao	STEVEN YAO	
	1 PLC ± -	APVD	T.SASAKI		
	2 PLC ± 0.13	NAME		RECEPTACLE ASSEMBLY, UNIVERSAL POWER MODULE	
	3 PLC ± -	PRODUCT SPEC			
	4 PLC ± -	APPLICATION SPEC			
	ANGLES ± -	SIZE	A1	00779	292284
MATERIAL	FINISH	WEIGHT			
①		CUSTOMER DRAWING	SCALE	NTS	SHEET 1 OF 1 REV D