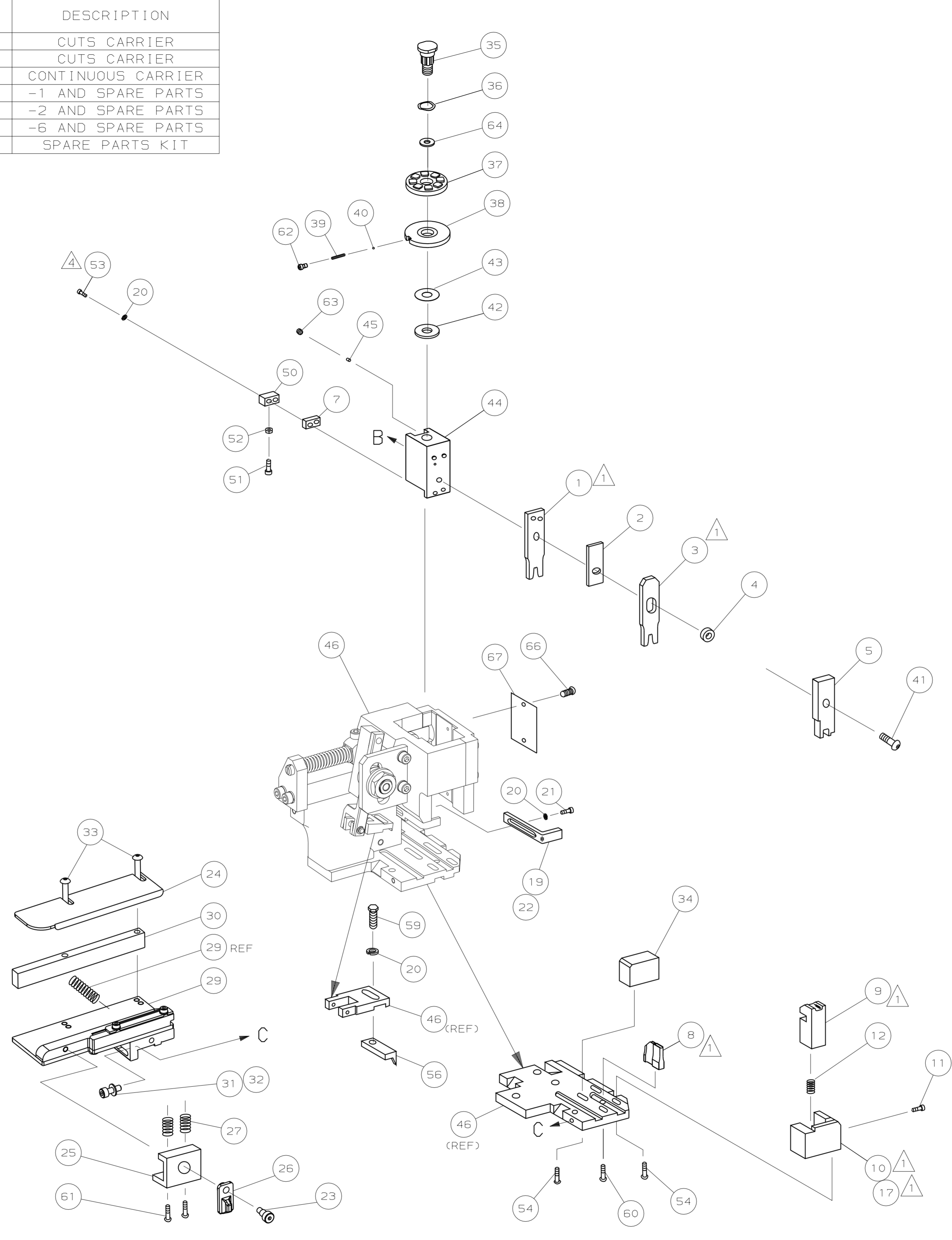
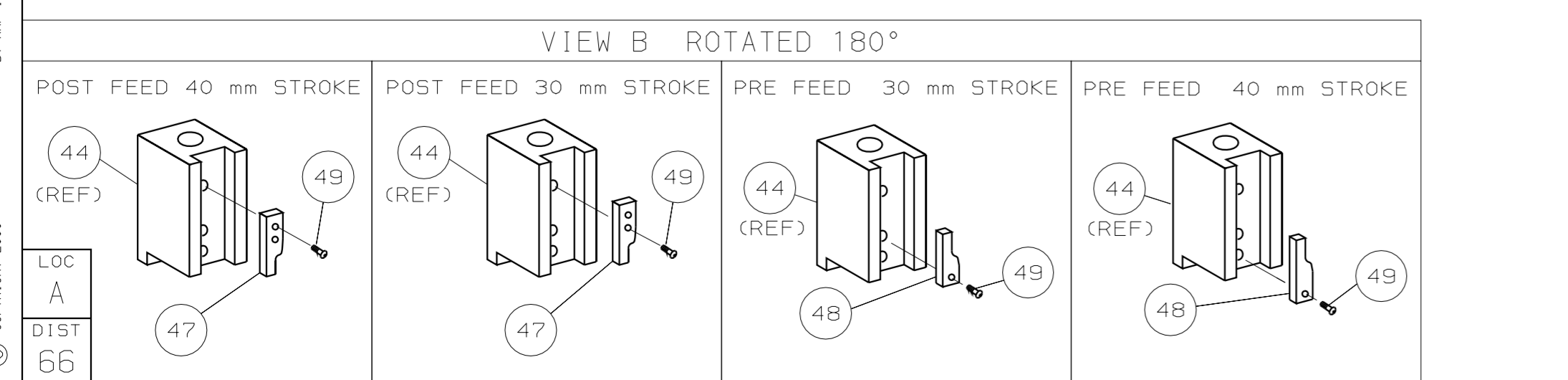


PART NUMBER	REV	FIRST USED	TERMINATOR	FEED TYPE	DESCRIPTION
1426007-1	C	-	LEADMAKER	MECH POST FEED	CUTS CARRIER
1426007-2	D	-	BENCH	MECH PRE FEED	CUTS CARRIER
1426007-6	C	-	LEADMAKER	MECH POST FEED	CONTINUOUS CARRIER
7-1426007-1	C	-	LEADMAKER	MECH POST FEED	-1 AND SPARE PARTS
7-1426007-2	D	-	BENCH	MECH PRE FEED	-2 AND SPARE PARTS
7-1426007-6	C	-	LEADMAKER	MECH POST FEED	-6 AND SPARE PARTS
7-1426007-7	A	-	-	-	SPARE PARTS KIT

CRIMP DATA (AMP TERMINAL)			
TERMINAL NAME: PIN ASSEMBLY, .062, TYPE III+			
CRIMP	SIZE	TYPE	RANGE
WIRE	1.57 [.062 IN]	F	24 - 20
INSUL	2.29 [.090 IN]	0	1.0-2.0 [.040-.080 IN]
WIRE STRIP LENGTH		APPL INSTRUCTION	
3.6-4.3 [.141-.171 IN]		408-8322	
TERMINAL	114-19000	FEED	12.7 [.5 IN]
APPL SPEC	-		
TERMINALS APPLIED			
163087	-	-	-
164160	-	-	-
163085	-	-	-
164818	-	-	-
164819	-	-	-
215325	-	-	-
-	-	-	-
-	-	-	-
-	-	-	-
-	-	-	-
WIRE SIZE	CRIMP HEIGHT	PIN PN & LENGTH [IN]	
mm <sup>2</sup> AWG			
20 AWG or 0.50mm <sup>2</sup>	1.04 ±0.05 [.041 ±.002 IN]	4-354779-3 [.32051]	
0.40mm <sup>2</sup>	0.99 ±0.05 [.039 ±.002 IN]	4-354779-6 [.32201]	
22 AWG or 0.30mm <sup>2</sup>	0.97 ±0.05 [.038 ±.002 IN]	4-354779-8 [.32301]	
24 AWG or 0.20mm <sup>2</sup>	0.94 ±0.05 [.037 ±.002 IN]	5-354779-1 [.32451]	

- 1. RECOMMENDED SPARE PARTS.
- 2. GREASE RAM, CAM, CAM FOLLOWER AND FEED ROD LIGHTLY.
- 3. LUBRICATE DAILY PER THE APPLICATOR INSTRUCTION SHEET SUPPLIED WITH THE APPLICATOR.
- 4. CUT TO LENGTH AT ASSY.



-	1	1	1	1	1	1	1426007	PRINT, APPLICATOR LOG SHEET	73			
-	1	1	1	1	1	1	1338705-1	DOCUMENTATION PACKAGE	71			
-	-	-	-	-	-	-	-	-	70			
-	-	-	-	-	-	-	-	-	69			
-	-	-	-	-	-	-	-	-	68			
-	1	1	1	1	1	1	461264-1	PLATE, IDENTIFICATION	67			
-	2	2	2	2	2	2	21017-2	SCR,DRIVE (#2x.19) ID PLATE	66			
-	-	-	-	-	-	-	-	-	65			
-	1	1	1	1	1	1	986950-1	WASHER, FLAT PRECISION	64			
-	1	1	1	1	1	1	3-18031-0	SCR,SKT SET (M6X6 LW)RAM	63			
-	1	1	1	1	1	1	18023-9	SCR,SHC (M4X6) INS DISC	62			
-	2	2	2	2	2	2	1-18024-5	SCR,BHC (M5X25)DRAG	61			
-	1	1	1	1	1	1	18024-7	SCR,BHC (M4X10)ANVIL	60			
-	1	1	1	1	1	1	5-18022-2	SCR,HEX (M4X8)FEED FINGER	59			
-	-	-	-	-	-	-	-	-	58			
-	-	-	-	-	-	-	-	-	57			
-	1	1	1	1	1	1	1338685-1	PAWL, FEED	56			
-	-	-	-	-	-	-	-	-	55			
-	4	4	4	4	4	4	18024-8	SCR,BHC (M4X12) SHEAR HOLDER	54			
-	2	2	2	2	2	2	1-18023-5	SCR,SHC (M4X25) TERM HLD DWN	53			
-	1	1	1	1	1	1	18030-1	NUT, HEX (M3) HOLD DOWN	52			
-	1	1	1	1	1	1	811242-5	BUMPER, HOLDDOWN	51			
-	1	1	1	1	1	1	690753-2	SPACER, TONKER	50			
-	1	1	1	1	1	1	18024-3	SCR,BHC (M3X10) CAM	49			
-	-	-	-	-	-	-	-	-	48			
-	1	-	1	1	-	-	1338675-1	CAM, PRE FEED 30 & 40 mm ST	48			
-	1	-	1	1	-	-	1338676-1	CAM, POST FEED 30 & 40 mm ST	47			
-	1	1	1	1	1	1	1320999-3	APPLICATOR BASIC SUBASSY	46			
-	1	1	1	1	1	1	690191-1	PLUG, NYLON	45			
-	1	1	1	1	1	1	1338660-1	RAM	44			
-	1	1	1	1	1	1	690125-1	WASHER, LAMINATED	43			
-	1	1	1	1	1	1	690124-1	WASHER, RAM	42			
-	1	1	1	1	1	1	2-18024-6	SCR,BHC (M8X25) RAM	41			
-	1	1	1	1	1	1	23241-1	BALL, STEEL	40			
-	1	1	1	1	1	1	2-22278-7	SPRING, COMPRESSION	39			
-	1	1	1	1	1	1	1320922-1	DISC, INSULATION	38			
-	1	1	1	1	1	1	354777-1	WIRE DISC, PLASTIC	37			
-	1	1	1	1	1	1	22480-5	WASHER, SPRING	36			
-	1	1	1	1	1	1	690212-1	POST, RAM	35			
-	1	1	1	1	1	1	1320934-1	SUPPORT, TERMINAL	34			
-	2	2	2	2	2	2	1-18024-0	SCR,BHC (M4X20) STRIP GUIDE	33			
-	1	1	1	1	1	1	18027-2	WASHER, FLAT (M4)	32			
-	1	1	1	1	1	1	1-18023-2	SCR,SKT CAP (M4X12) MOUNT BLOCK	31			
-	1	1	1	1	1	1	1320908-4	SPACER, STRIP GUIDE	30			
-	1	1	1	1	1	1	1633073-1	STRIP GUIDE PLATE ASSY	29			
-	-	-	-	-	-	-	-	-	28			
-	2	2	2	2	2	2	1-22284-0	SPRING, DRAG	27			
-	1	1	1	1	1	1	356835-1	LEVER, DRAG RELEASE	26			
-	1	1	1	1	1	1	240792-1	DRAG, TERMINAL	25			
-	1	1	1	1	1	1	1320928-1	PLATE, STRIP GUIDE	24			
-	1	1	1	1	1	1	980371-4	SCR,SHC SHLD	23			
-	1	-	1	1	-	1	690472-2	STRIPPER	22			
-	1	1	1	1	1	1	1-18023-1	SCR,SHC (M4X10) STRIPPER	21			
-	4	4	4	4	4	4	18025-2	WASHER, LOCK (M4) STRIPPER	20			
-	-	1	-	-	1	-	1424364-1	STRIPPER	19			
-	-	-	-	-	-	-	-	-	18			
-	1	-	-	1	-	-	1338684-1	HOLDER, SHEAR, FRONT (NO-CUT)	17			
-	-	-	-	-	-	-	-	-	16			
-	-	-	-	-	-	-	-	-	15			
-	-	-	-	-	-	-	-	-	14			
-	-	-	-	-	-	-	-	-	13			
-	1	1	1	1	1	1	5-22280-0	SPRING, SHEAR	12			
-	1	1	1	1	1	1	356885-4	STOP, SHEAR	11			
-	-	1	1	-	1	1	1320921-1	HOLDER, SHEAR, FRONT (CUT)	10			
-	1	1	1	1	1	1	454276-1	SHEAR, FLOAT (FRONT)	9			
1	2	2	2	2	1	1	1333202-2	ANVIL	8			
-	1	1	1	1	1	1	5-240641-1	SPACER, DEPRESSOR (REAR)	7			
-	-	-	-	-	-	-	-	-	6			
-	1	1	1	1	1	1	455889-9	DEPRESSOR, SHEAR (FRONT)	5			
-	1	1	1	1	1	1	2-238011-2	SPACER, BLOCK CRIMPER	4			
1	2	2	2	2	1	1	4-456135-4	CRIMPER, INSULATION	3			
-	1	1	1	1	1	1	455888-2	SPACER, CRIMPER	2			
1	2	2	2	2	1	1	1-456403-5	CRIMPER, WIRE	1			
-77	-76	-72	-71	-6	-2	-1		PART NO	DESCRIPTION	ITEM NO		
-	-	-	-	-	-	-	-	REVISION OF EACH ASSY NO (WHEN BLANK, USE DWG REVISION)	-	-		
QTY REQD PER ASSY			PARTS LIST								HT TR	FIN
DO NOT SCALE PRINT.												
TOLERANCES UNLESS OTHERWISE SPECIFIED.												
2 PLC DEC ±0.5 (.02 IN)												
3 PLC DEC ± . . .												
4 PLC DEC ± . . .												
ANGLES ± . . .												
SURF TEXTURE: √												
REMOVE BURRS, BREAK SHARP EDGES R0.38 MAX												
DR	06JUN00	APP	06JUN00	F.BACKHURST	AMP			AMP Incorporated Harrisburg, PA 17105-3608				
CHK	01-11-00	REL	01-11-00	M.CLIFFORD	AMP			AMP Incorporated Harrisburg, PA 17105-3608				
NAME	SIDE FEED HD-I APPLICATOR				MACHINE REF			HD-I APPL				
SCALE	D			DWG NO			1426007			SHEET 1 OF 1		
CUSTOMER AND ASSEMBLY DRAWING												
00779												

THIS DRAWING IS A CONTROLLED DOCUMENT.

LAYOUT L1426007 SET UP GAGE 458637-3

2000 . . . . . RELEASED FOR PUBLICATION BY AMP INCORPORATED. ALL RIGHTS RESERVED.