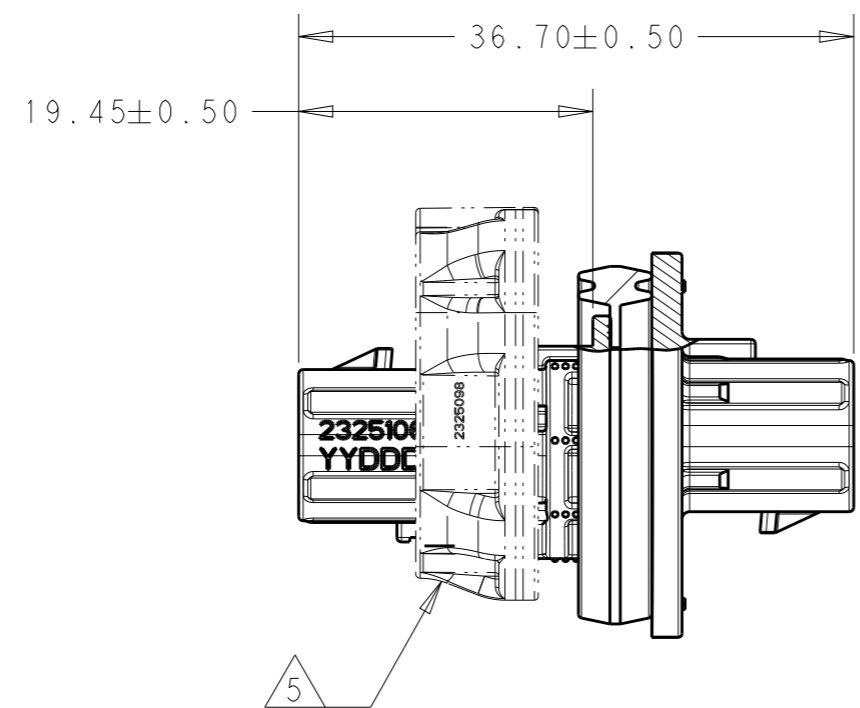
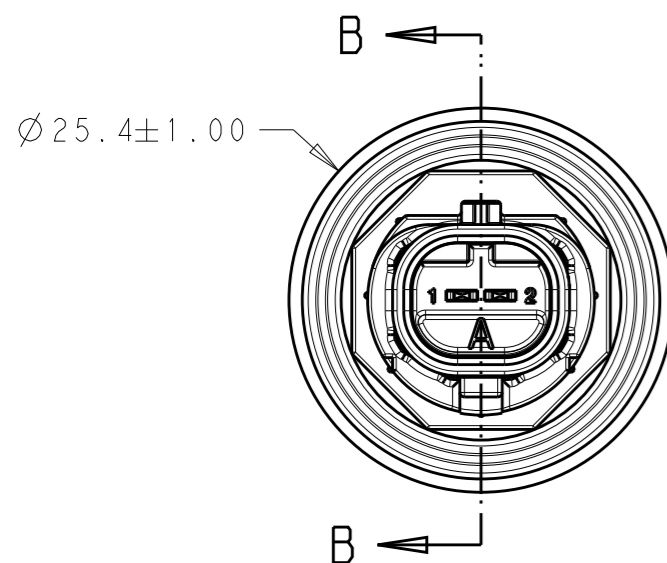


THIS DRAWING IS UNPUBLISHED. RELEASED FOR PUBLICATION 20
 © COPYRIGHT 20 BY - ALL RIGHTS RESERVED.

REVISIONS

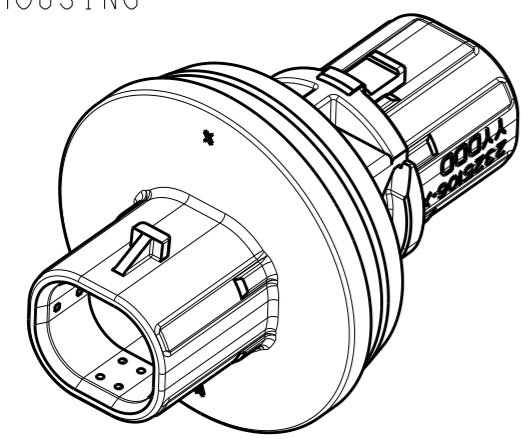
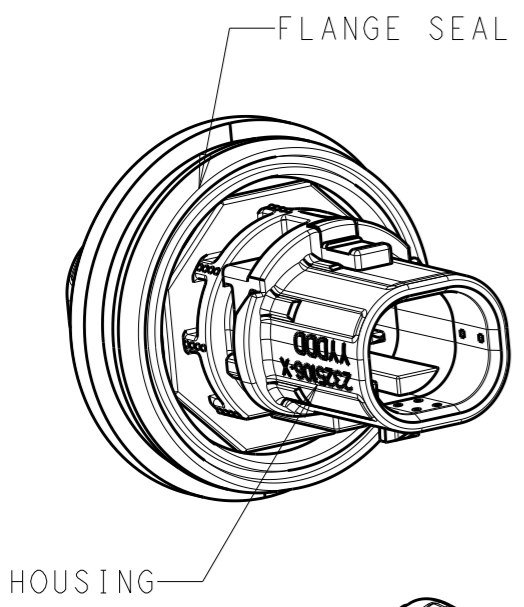
P	LTR	DESCRIPTION	DATE	DWN	APVD
	A	RELEASE PER ECO-20-003857	16MAR2020	DFS	DFS



SECTION B-B

NOTES:

- MATERIALS:
 ADAPTER HOUSING:
 GENERIC TYPE = NYLON GF30%
 COLOR = BLACK
 TERMINALS:
 BASE MAT'L = COPPER ALLOY
 MATING INTERFACE = SILVER OVER NICKEL
 FLANGE SEAL:
 GENERIC TYPE = SILICONE RUBBER
 COLOR = YELLOW
- REFERENCE TO DRAWING 2295114 FOR CONNECTOR INTERFACE DIMENSIONS.
- OPERATING TEMPERATURE = -40°C TO +125°C
- THIS PART MATES WITH 2-WAY PLUG, P/N 2292906-X. SEE SHEET 2 FOR KEYING ARRANGEMENTS.
- THIS PART MUST USE MOUNTING CLIP, P/N 2325098-X (SOLD SEPARATELY) FOR PROPER SEALING AND RETENTION WHEN ASSEMBLED TO A PANEL.
- ADAPTER NOT SEALED IN THE UNMATED STATE.
- HIGH PRESSURE SPRAY FROM CLIP SIDE ONLY.
- NOT RELEASED FOR PRODUCTION



ISOMETRIC VIEWS SHOWN FOR REFERENCE ONLY

THIS DRAWING IS A CONTROLLED DOCUMENT.		DWN 28MAR2018 RAGHAV SATHISH	TE Connectivity			
DIMENSIONS: mm		CHK 28MAR2018 D.F. STACK				
TOLERANCES UNLESS OTHERWISE SPECIFIED: 0 PLC ±- 1 PLC ±- 2 PLC ±- 3 PLC ±- 4 PLC ±- ANGLES ±2°		APVD 13MAR2020 D. KLEIN	NAME ADAPTER, 2POS, 1.2X0.6, PIN HSG ASSY enetSEAL+			
MATERIAL SEE NOTE 1		PRODUCT SPEC 108-151045	SIZE A3	CAGE CODE -	DRAWING NO C-2325106	RESTRICTED TO -
FINISH -		APPLICATION SPEC 114-151045	SCALE 2:1		SHEET 1 OF 5	REV A
-		WEIGHT -	CUSTOMER DRAWING			

THIS DRAWING IS UNPUBLISHED.

RELEASED FOR PUBLICATION

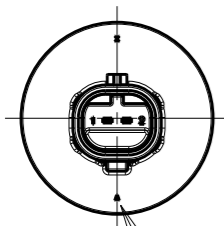
20

© COPYRIGHT 20 BY -

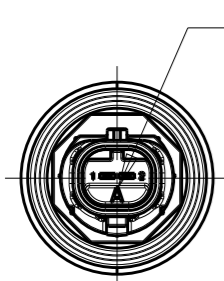
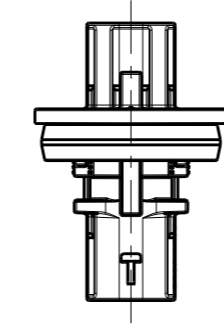
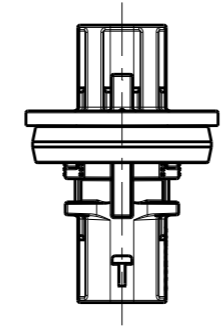
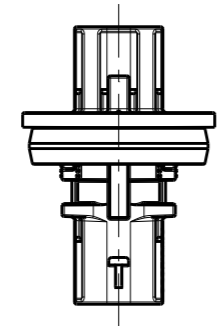
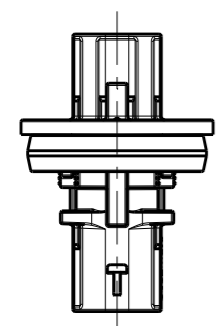
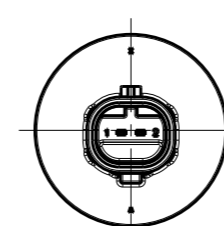
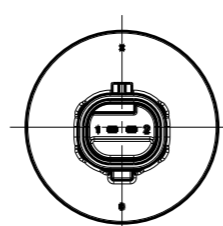
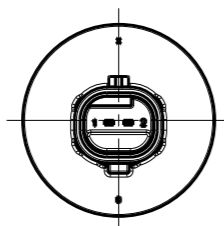
ALL RIGHTS RESERVED.

REVISIONS

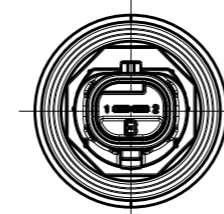
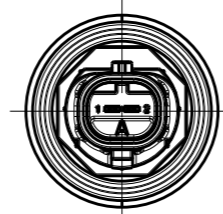
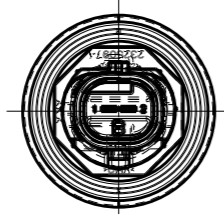
P	LTR	DESCRIPTION	DATE	DWN	APVD
-	-	SEE SHEET 1	-	-	-



KEY ID
FLANGE SIDE



KEY ID
CLIP SIDE



2325106-1
(KEY A-A)

2325106-2
(KEY B-B)

2325106-4
(KEY A-B)

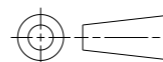
2325106-8
(KEY B-A)



THIS DRAWING IS A CONTROLLED DOCUMENT.

DIMENSIONS:

mm



TOLERANCES UNLESS OTHERWISE SPECIFIED:

- 0 PLC ±-
- 1 PLC ±-
- 2 PLC ±-
- 3 PLC ±-
- 4 PLC ±-
- ANGLES ±2°
- FINISH -

MATERIAL
SEE NOTE 1

DWN 28MAR2018

RAGHAV SATHISH

CHK 28MAR2018

D.F. STACK

APVD 13MAR2020

D. KLEIN

PRODUCT SPEC

108-151045

APPLICATION SPEC

114-151045

WEIGHT

-

CUSTOMER DRAWING



TE Connectivity

NAME
ADAPTER, 2POS, 1.2X0.6, PIN HSG ASSY
enetSEAL+

SIZE	CAGE CODE	DRAWING NO	RESTRICTED TO
------	-----------	------------	---------------

A3	-	©-2325106	-
----	---	-----------	---

SCALE	SHEET	OF	REV
2:1	2	5	A

THIS DRAWING IS UNPUBLISHED.

RELEASED FOR PUBLICATION 20

© COPYRIGHT 20 BY - ALL RIGHTS RESERVED.

REVISIONS

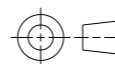
P	LTR	DESCRIPTION	DATE	DWN	APVD
	-	SEE SHEET 1	-	-	-

ADDITIONAL NOTES REGARDING PANEL/ENCLOSURE FITMENT:

- 10. RECOMMENDED KEEP OUT REGION TO ENSURE PROPER ASSEMBLY TO PANEL/ENCLOSURE.
- 11. RECOMMENDED KEEP OUT REGION TO ENSURE PROPER CLIP ASSEMBLY.
- 12. SURFACE FINISH REQUIREMENT APPLIES WITHIN KEEPOUT REGION.
- 13. THICKNESS BETWEEN KEEP OUT REGIONS MUST MEET THICKNESS REQUIREMENT FOR SPECIFIC MOUNTING CLIP TO BE USED PER TE CUSTOMER DRAWING 2325098.
- 14. SEALING SURFACE, NO BURRS, SCRATCHES OR TOOL MARKS ALLOWED.
- 15. REMOVE SHARP EDGES. R0.5MM MAX.
- 16. X BASIC AND Y BASIC TO BE DEFINED BY THE CUSTOMER.

THIS DRAWING IS A CONTROLLED DOCUMENT.

DIMENSIONS:
mm



MATERIAL
SEE NOTE 1

TOLERANCES UNLESS OTHERWISE SPECIFIED:

- 0 PLC ±-
- 1 PLC ±-
- 2 PLC ±-
- 3 PLC ±-
- 4 PLC ±-
- ANGLES ±2°
- FINISH -

DWN 28MAR2018
RAGHAV SATHISH
CHK 28MAR2018
D.F. STACK
APVD 13MAR2020
D. KLEIN

PRODUCT SPEC
108-151045

APPLICATION SPEC
114-151045

WEIGHT
-

CUSTOMER DRAWING



TE Connectivity

NAME
ADAPTER, 2POS, 1.2X0.6, PIN HSG ASSY
enetSEAL+

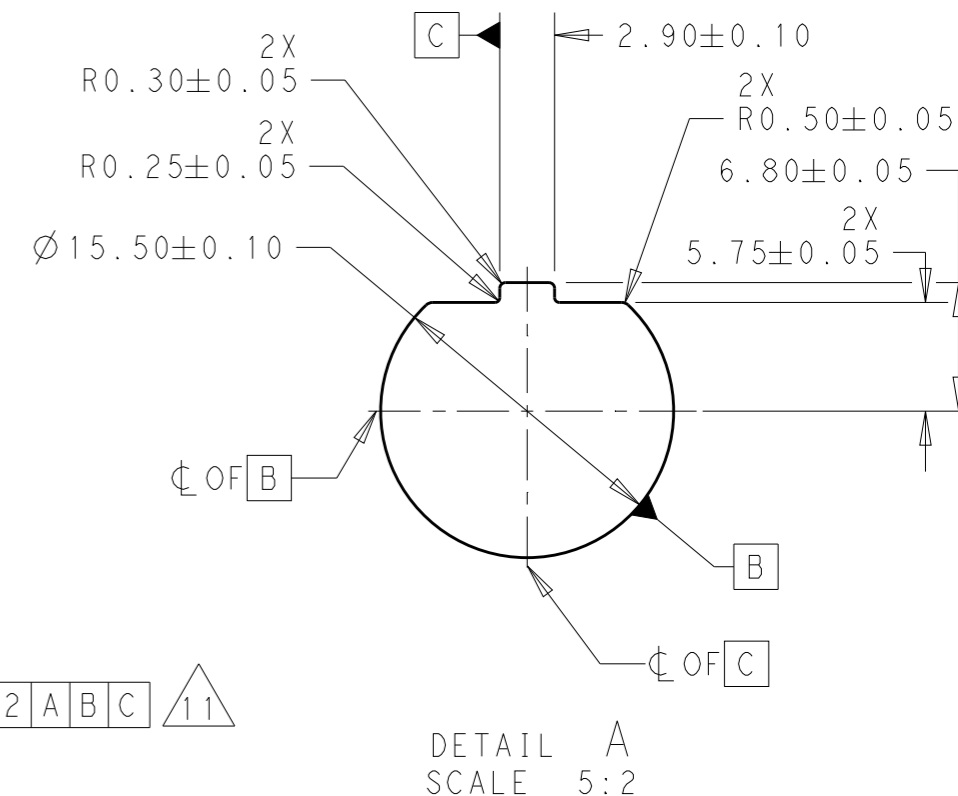
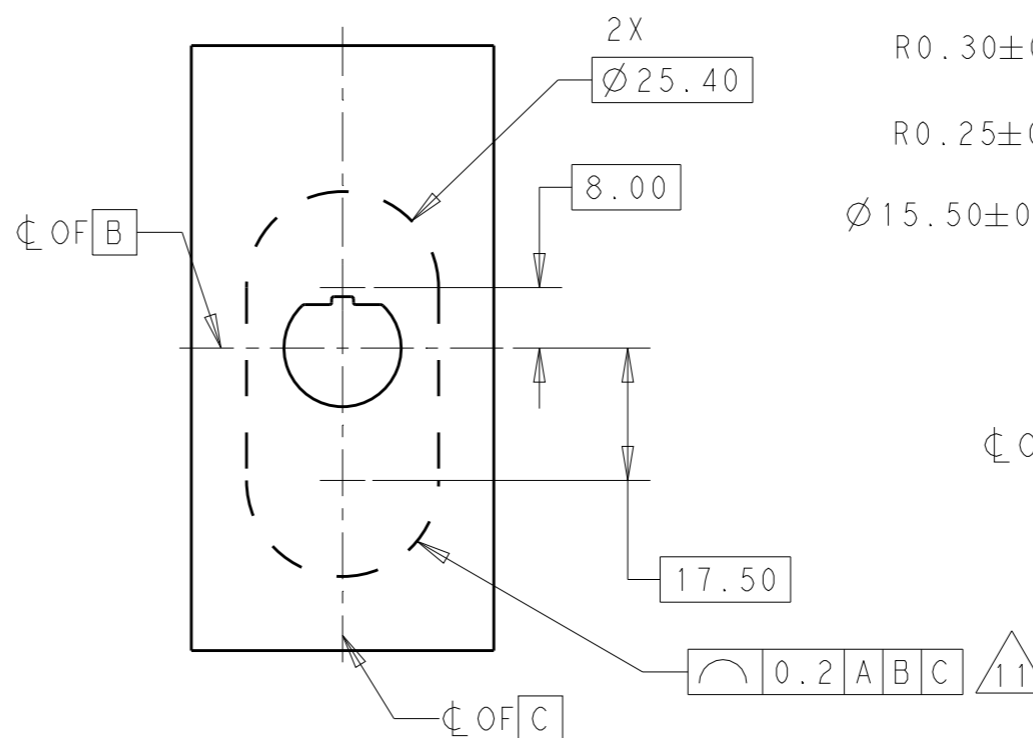
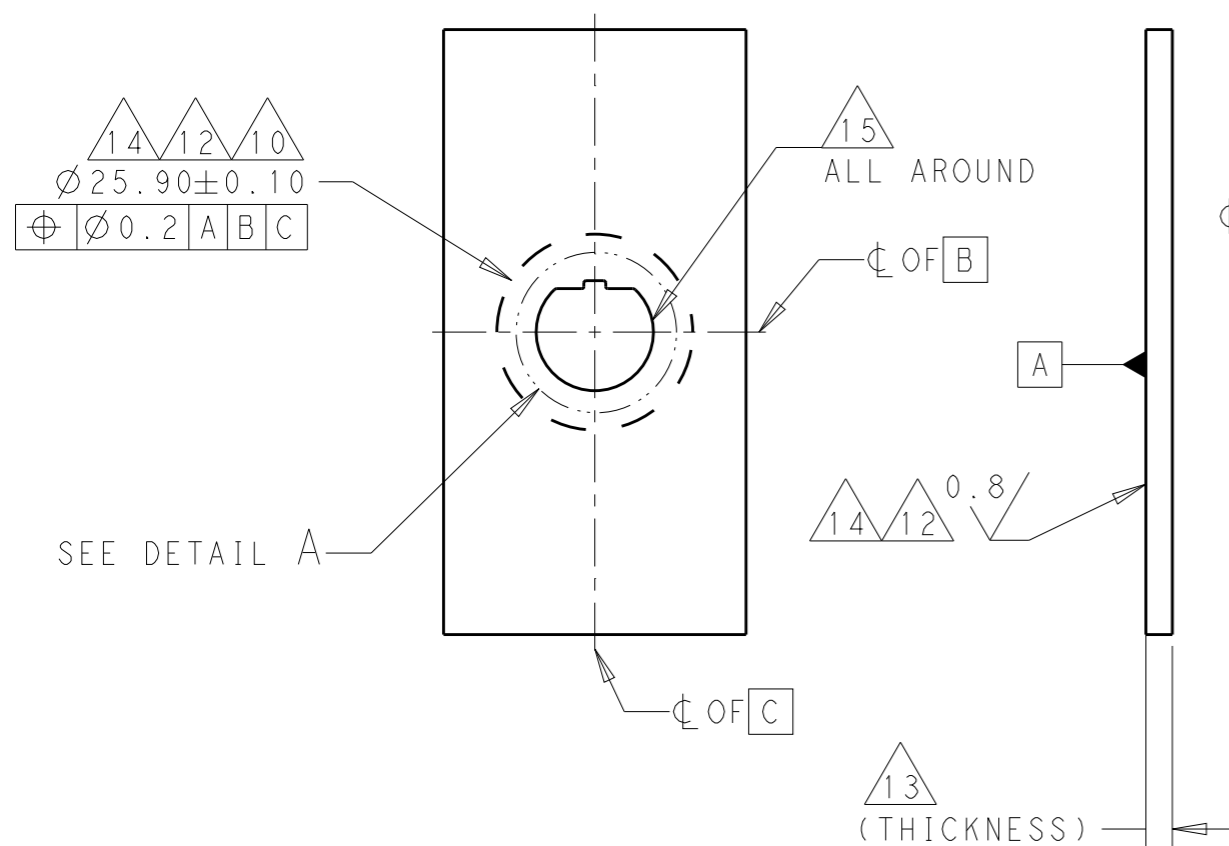
SIZE A3	CAGE CODE -	DRAWING NO C-2325106	RESTRICTED TO -
------------	----------------	-------------------------	--------------------

SCALE 2:1 SHEET 3 OF 5 REV A

REVISIONS

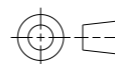
P	LTR	DESCRIPTION	DATE	DWN	APVD
-	-	SEE SHEET 1	-	-	-

RECOMMENDED ENCLOSURE GEOMETRY FOR ASSEMBLIES
2325106-X



THIS DRAWING IS A CONTROLLED DOCUMENT.

DIMENSIONS:
mm



MATERIAL
SEE NOTE 1

TOLERANCES UNLESS OTHERWISE SPECIFIED:

0 PLC	±-
1 PLC	±-
2 PLC	±-
3 PLC	±-
4 PLC	±-
ANGLES	±2°
FINISH	-

DWN 28MAR2018
 RAGHAV SATHISH
 CHK 28MAR2018
 D.F. STACK
 APVD 13MAR2020
 D. KLEIN
 PRODUCT SPEC
 108-151045
 APPLICATION SPEC
 114-151045
 WEIGHT
 -

CUSTOMER DRAWING



TE Connectivity

NAME
ADAPTER, 2POS, 1.2X0.6, PIN HSG ASSY
enetSEAL+

SIZE	CAGE CODE	DRAWING NO	RESTRICTED TO
A3	-	2325106	-

SCALE 2:1 SHEET 4 OF 5 REV A

THIS DRAWING IS UNPUBLISHED.

RELEASED FOR PUBLICATION

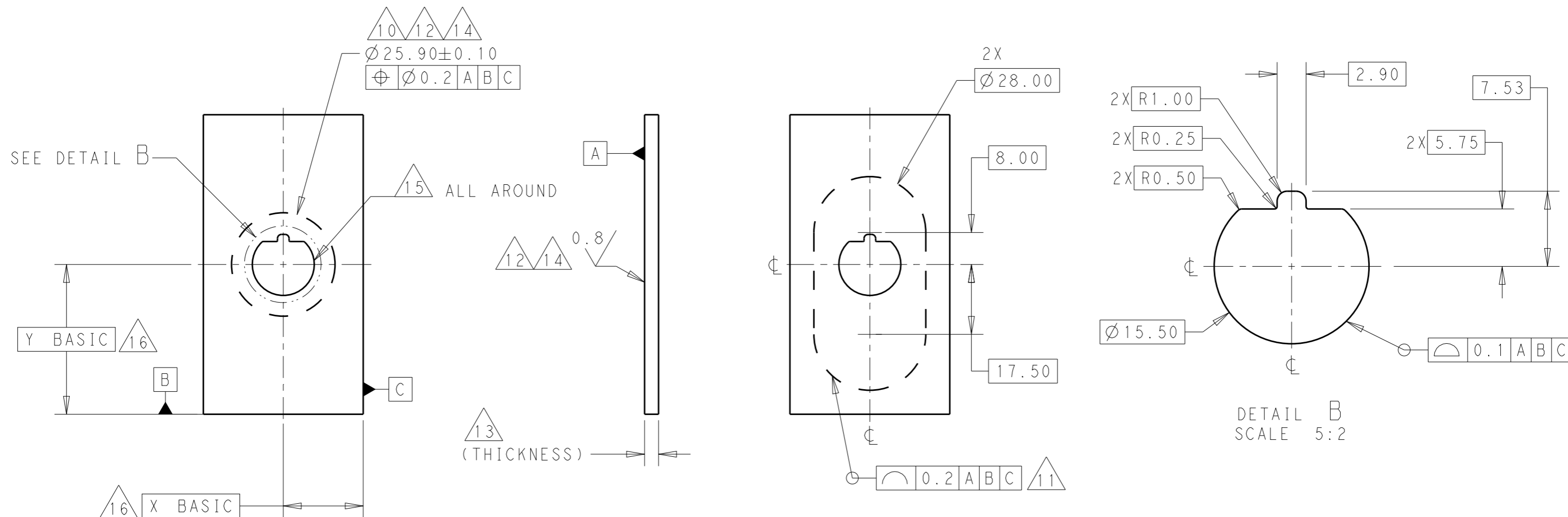
20


© COPYRIGHT 20 BY - ALL RIGHTS RESERVED.

REVISIONS

P	LTR	DESCRIPTION	DATE	DWN	APVD
-	-	SEE SHEET 1	-	-	-

ALTERNATE RECOMMENDED ENCLOSURE GEOMETRY FOR ASSEMBLIES
2325106-X



THIS DRAWING IS A CONTROLLED DOCUMENT.		DWN 28MAR2018 RAGHAV SATHISH	 TE Connectivity	
DIMENSIONS: mm		CHK 28MAR2018 D.F. STACK		
TOLERANCES UNLESS OTHERWISE SPECIFIED:		APVD 13MAR2020 D. KLEIN	NAME ADAPTER, 2POS, 1.2X0.6, PIN HSG ASSY enetSEAL+	
0 PLC ±-		PRODUCT SPEC 108-151045	SIZE A3	
1 PLC ±-		APPLICATION SPEC 114-151045	CAGE CODE -	DRAWING NO C-2325106
2 PLC ±-		WEIGHT -	RESTRICTED TO -	
3 PLC ±-		CUSTOMER DRAWING	SCALE 2:1	SHEET 5 OF 5
4 PLC ±-			REV A	
ANGLES ±2°				
FINISH -				
MATERIAL SEE NOTE 1				