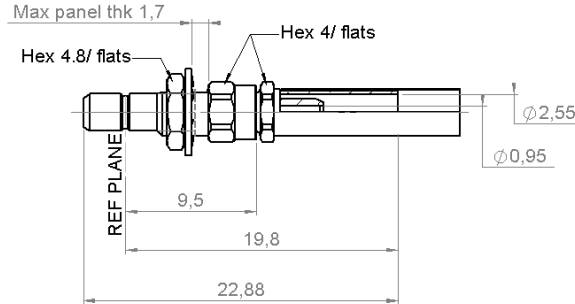


STRAIGHT BULKHEAD JACK
CRIMP TYPE -CABLE 2/50

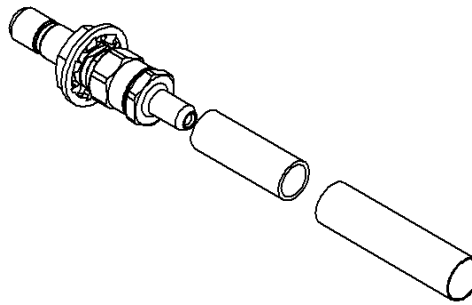
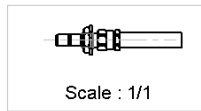
R203.313.000

Series : SSMB

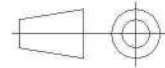


PANEL CUT OUT

	mm	
	Maxi	mini
A	3.60	3.50
B	3.30	3.20



All dimensions are in mm.



COMPONENTS	MATERIALS	PLATINGS (µm)
BODY	BRASS	GOLD 0.5 OVER NICKEL 2
CENTER CONTACT	BERYLLIUM COPPER	GOLD 1.3 OVER NICKEL2
OUTER CONTACT	-	-
INSULATOR	PTFE	-
GASKET	-	-
OTHERS PARTS	BRASS	GOLD 0.2 OVER NICKEL 2
-	-	-
-	-	-

Issue : 1214 C

In the effort to improve our products, we reserve the right to make changes judged to be necessary.



STRAIGHT BULKHEAD JACK

R203.313.000

CRIMP TYPE -CABLE 2/50

Series : **SSMB**

PACKAGING

Standard	Unit	Other
1001	-	Contact us

SPECIFICATION

CABLE ASSEMBLY

ELECTRICAL CHARACTERISTICS

Stripping	a	b	c	d	e	f
mm	3,50	4,00	12,5	0,00	8,50	0,00

Impedance	50	Ω
Frequency	0-4	GHz
VSWR	1.25 + 0,0200	x F(GHz) Maxi
Insertion loss	0.30	\sqrt{F} (GHz) dB Maxi
RF leakage	- (NA)	- F(GHz) dB mini
Voltage rating	175	Veff Maxi
Dielectric withstanding voltage	500	Veff mini
Insulation resistance	1000	M Ω mini

Assembly instruction :

Recommended cable(s)
 RG 178
 KX 21
 RG 196
 RG 178 LC

Cable retention

- pull off **54** N mini
 - torque **NA** N.cm

MECHANICAL CHARACTERISTICS

TOOLING

Center contact retention		
Axial force – Mating end	8	N mini
Axial force – Opposite end	8	N mini
Torque	NA	N.cm mini

Part Number	Description	Hexagon
.	.	.
R282.293.000	CRIMPING TOOL M22520/5-01	-
R282.235.003	CRIMPING DIES M22520/5-03	2.67
R282.211.000	CRIMPING TOOL	2.67

Recommended torque		
Mating	NA	N.cm
Panel nut	25	N.cm
Clamp nut	NA	N.cm
A/F clamp nut	0,0000	mm

Mating life	500	Cycles mini
Weight	0,0000	g

OTHERS CHARACTERISTICS

-

ENVIRONMENTAL

Operating temperature	-65/+165	$^{\circ}$ C
Hermetic seal	NA	Atm.cm3/s
Panel leakage	NA	

Issue : 1214 C

In the effort to improve our products, we reserve the right to make changes judged to be necessary.



RADIALL®

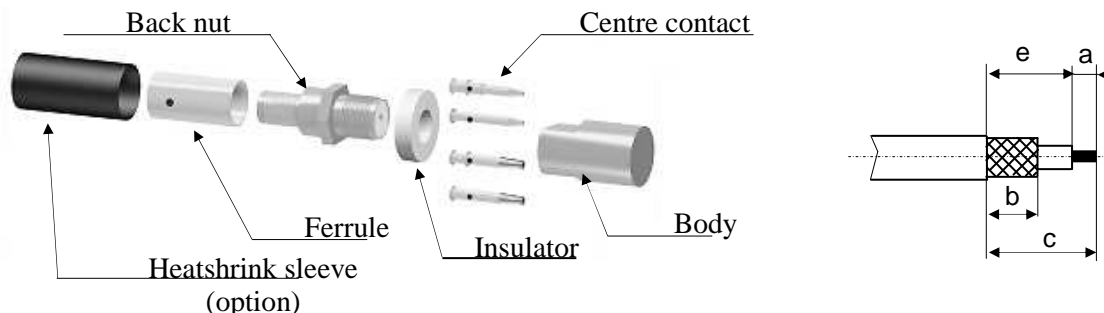
STRAIGHT BULKHEAD JACK

R203.313.000

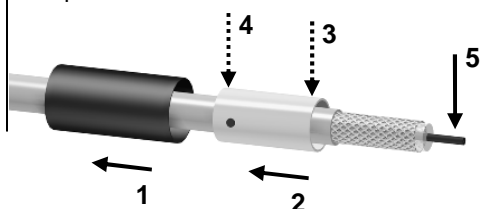
CRIMP TYPE -CABLE 2/50

Series : **SSMB**

COMPONENTS



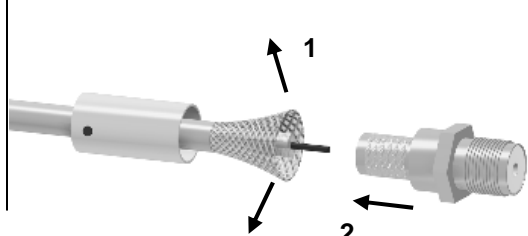
1
Slide the heatshrink sleeve onto the cable (Option).
Slide the ferrule onto the cable.
Position the ferrule's hole at the front if soldering.
Position the ferrule's hole at the back if crimping.
Strip the cable.



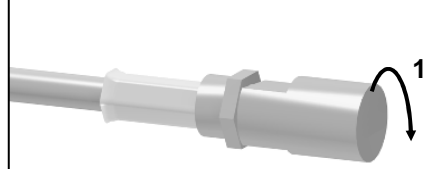
4
Slide the centre contact on until it bottoms against the insulator back nut.
Solder or crimp the contact (see connector TDS).



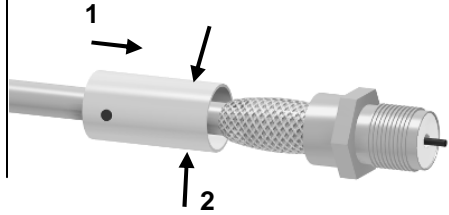
2
Fan the braid.
Slide the cable into the back nut.



5
Screw the back nut into the connector body with the adapted wrench.
Recommended coupling torque 170 N cm.



3
Slide the ferrule over the braid.
Crimp the ferrule with crimping tool (see connector TDS).



6
Slide the sleeve over the ferrule and heatshrink it in place (option).

