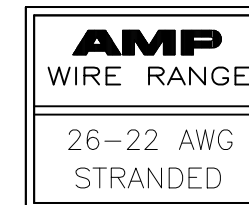
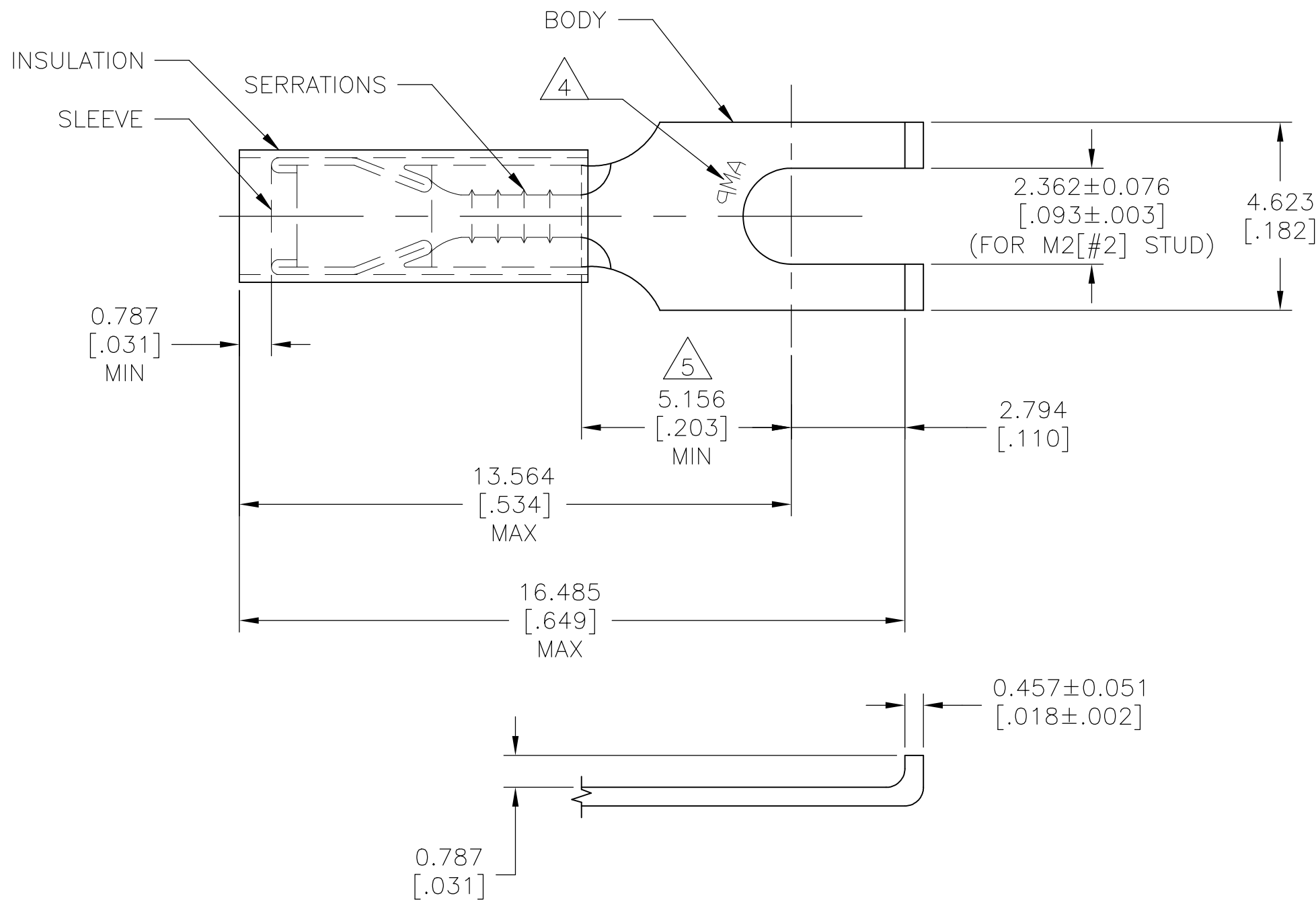


P	LTR	DESCRIPTION	DATE	DWN	APVD
	M1	REVISED PER ECO-17-008114	12JUN2018	RS	DR



- 1 WIRE INSULATION DIA:
1.270 TO 2.083[.050 TO .082]
- 2 FINISH:
BODY & SLEEVE: TIN PLATE PER ASTM B545
0.0025400[.000100]
INSULATION: COLOR - YELLOW
- 3 MATERIAL:
BODY & SLEEVE: COPPER PER ASTM B152
INSULATION: NYLON
- 4 STAMP AMP APPROX AS SHOWN
- 5 APPLIES FROM EDGE OF METAL WIRE
BARREL TO CENTER OF STUD

1000	LOOSE PIECE	324597
QUANTITY	DESCRIPTION	PART NO

AMP INCORPORATED
CUSTOMER SERVICE SYSTEMS

THIS DRAWING IS A CONTROLLED DOCUMENT.

DWN RAVI S 12JUN2018

CHK ROHDE DANIEL 12JUN2018

APVD ROHDE DANIEL 12JUN2018



FOR ADDITIONAL
PRODUCT INFORMATION OR
COPIES OF DRAWINGS
AND TECHNICAL DOCUMENTS

PRODUCT INFORMATION CENTER
1-800-522-6752

MAX RECOMMENDED OPERATING
TEMPERATURE:
105°C [221°F]

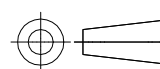
VOLTAGE RATING:
300 V MAX

FOR APPLICATION
TOOLING INFORMATION

TOOLING ASSISTANCE CENTER
1-800-722-1111

WIRE CROSS SECTIONAL AREA RANGE,
0.10-0.41mm²[202-810] CIR MILS
STRANDED

DIMENSIONS:
mm [INCHES]



TOLERANCES UNLESS
OTHERWISE SPECIFIED:

0 PLC	± -
1 PLC	± -
2 PLC	± -
3 PLC	± 0.127[.005]
4 PLC	± -
ANGLES	± -

MATERIAL



FINISH



NAME

TERMINAL,
P.I.D.G., FLANGED SPADE
WIRE SIZE: 26-22

PRODUCT SPEC

-

APPLICATION SPEC

114-2157

WEIGHT

CUSTOMER DRAWING

SIZE A3 CAGE CODE 00779 DRAWING NO C-324597 RESTRICTED TO -

FOR ORDER ENTRY
1-800-526-5142

SCALE N.T.S. SHEET 1 OF 1 REV M1