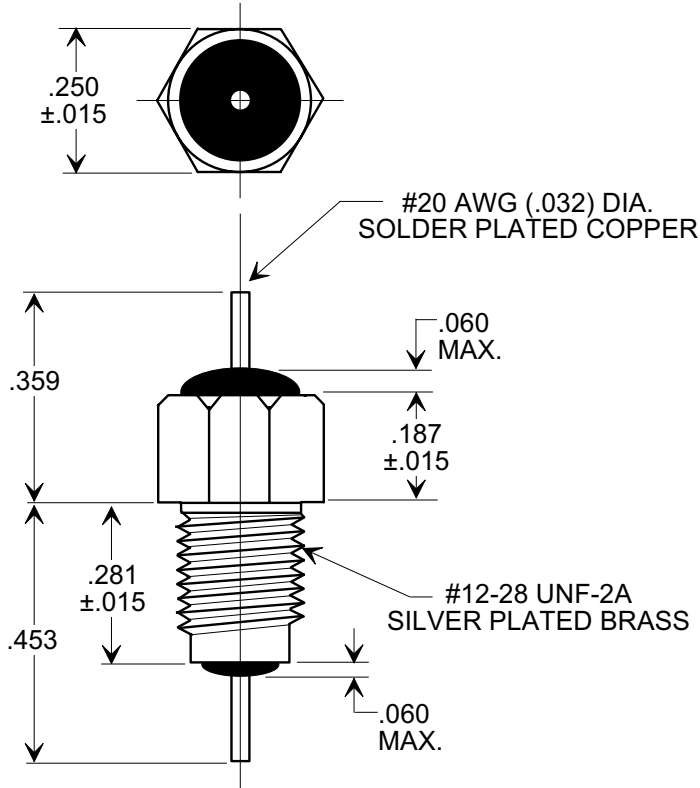
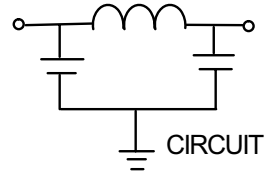


MARKETING SALES DRAWING
DIMENSIONS IN INCHES - DO NOT SCALE THIS DRAWING

Electrical Testing
per Tusonix standard
test plans and Mil-Std-202
Test Methods.



NOTE:
HEX NUT AND INTERNAL TOOTH
LOCK WASHER SUPPLIED.

1500	350	200	10	5	45	70	70
	85°C	125 °C		10	100	1	10
MIN. CAP. (pF)	WORKING VOLTAGE (WVdc)		CURRENT IDC	MINIMUM NO LOAD INSERTION LOSS (dB) AT 25°C PER MIL-STD -220			
				MHz	MHz	GHz	GHz

REVISION RECORD Original Release C.O. 19991123-1-01 0	TOLERANCES unless otherwise specified 2 PLC. DECIMAL ± N/A 3 PLC. DECIMAL ± .031 ANGLES ± N/A		Title BUSHING STYLE EMI FILTER	
	TUSONIX TUCSON, ARIZONA		Drawn S.M. 11-24-99	Scale 3 X
	A		Approved T.C. 11-24-99	
	4204-004			

X-2015 Rev-0