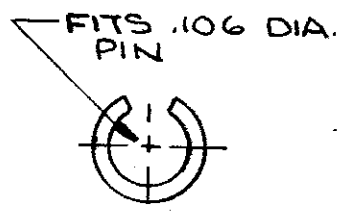
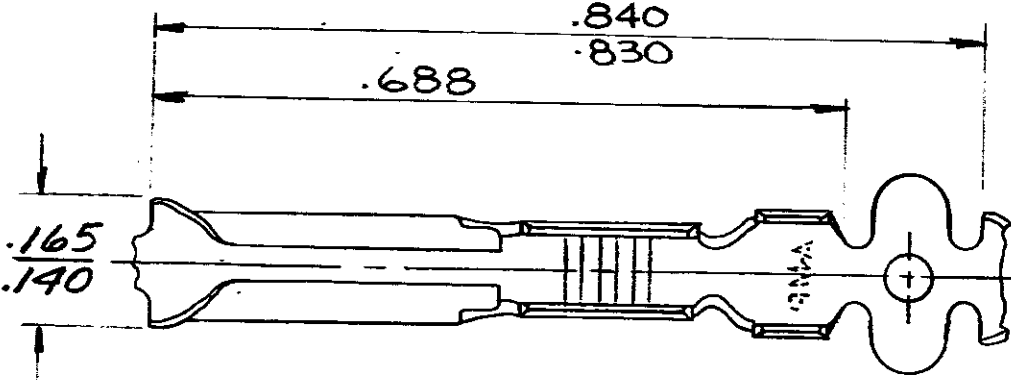
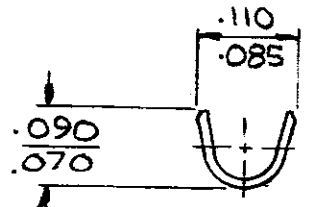
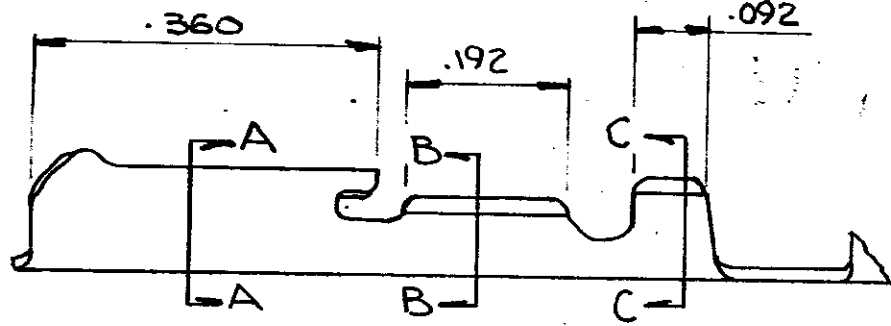


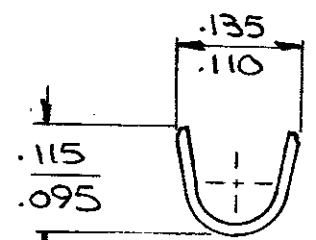
NUMBER  
**60908**



**SECT A-A**



**SECT B-B**



**SECT C-C**

CONTINUOUS STRIP, ON REELS

WIRE SIZE AWG	INSULATION RANGE	PIN DIA. ±.002	MATERIAL AND FINISH	TERMINAL NUMBER
24-20	.075-.100	.106	.012 BRASS-PRE-TIN	60908-1

DIMENSIONS IN INCHES. DO NOT SCALE PRINT.

G	ADDED SEER. A 208L	NA	Key	Pat
F	CHANGED DIST. A-47	LE	Key	9-20-71
E	.165/.140 WAS 5.810	JRK	AET	11/8/69
D	.155 <sup>±.010</sup> WAS .165/.145	JRK	HET	10/1/68
C	ADDED .165/.145	EXP	WJ	9/1/68
B	RELEASED	CM	SH	12-1-66
A	REVISED A 645	CNI	Rb	11/1/65
	WAS P-28634			

©1965 BY AMP INCORPORATED. ALL RIGHTS RESERVED. AMP PRODUCTS COVERED BY PATENTS AND/OR PATENTS PENDING.

**CUSTOMER COPY REFERENCE ONLY**

MATERIAL AND FINISH



WIRE RANGE INSULATION TYPE

LTR	REVISION RECORD	DR	CHK	DATE	TOLERANCE EXCEPT AS NOTED ±.013 ± 1°	SCALE 5-1	LOC AF	NO A	NO 60908	REV G
	11-1-65									
	C. MEYERS									
	PC SWENDEL									

.106 DIA. PIN RECEPTACLE