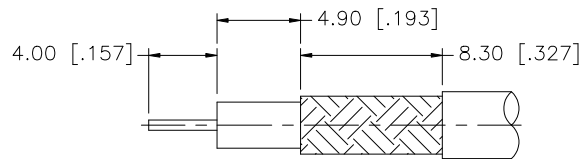
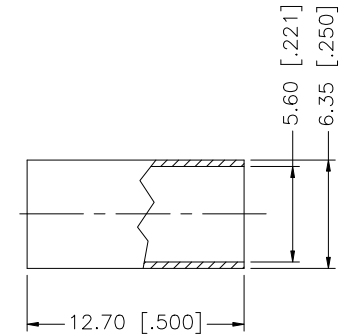
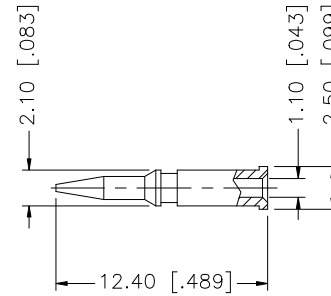
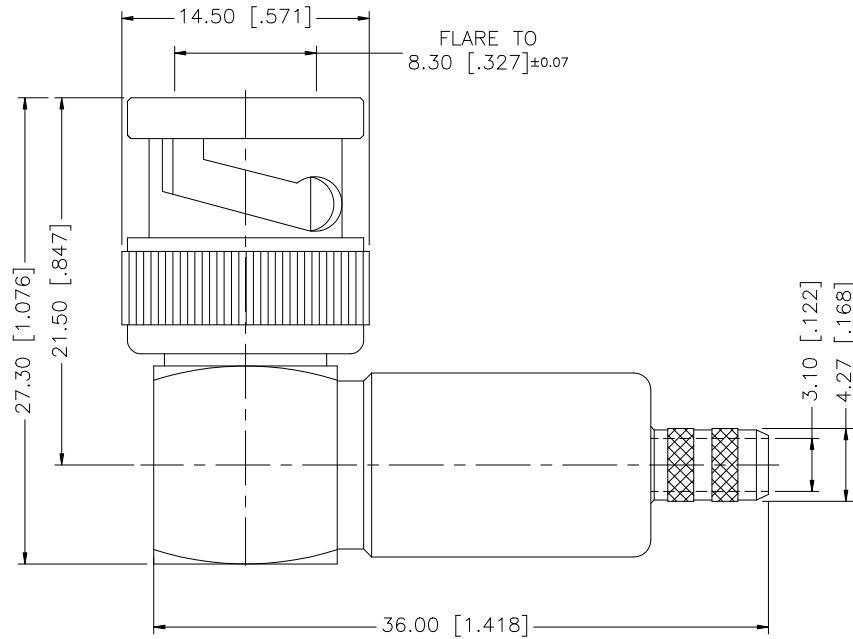


| REV. | DATE | ECR NO. | DESCRIPTION |
|------|----------|---------|-----------------|
| NC | 02/02/09 | - | INITIAL RELEASE |



RECOMMENDED
CABLE STRIPPING DIM'S

NOTE:

1. CRIMPED FERRULE HEX CRIMP SIZE .213" [5.41]
2. CRIMPED CONTACT PIN HEX CRIMP SIZE .068" [1.72]

| UNLESS OTHERWISE SPECIFIED DIMENSIONS ARE IN MILLIMETERS. DIMENSIONS IN [] ARE IN INCHES AND FOR CUSTOMER REFERENCE ONLY. | | | | | APPROVALS | DATE | <h1 style="color: blue;">Amphenol Connex</h1> | | | |
|--|-------------|--------|---------|---|--|--------|---|-------------------|------------------|--------------------|
| 8 | | | | | DRAWN | GRS | | 02/02/09 | | |
| 7 | | | | | CHECKED | | | | | |
| 6 | | | | | ISSUED | | | | | |
| 5 | | | | | SHEET | 1 OF 1 | | | | |
| 4 | FERRULE | COPPER | NICKEL | 1 | PART DESCRIPTION BNC R/A CRIMP PLUG (FOR RG-223/U, 400/U, 55/U, 142A/U) | | | | | |
| 3 | CONTACT PIN | BRASS | GOLD | 1 | | | | | | |
| 2 | INSULATOR | PTFE | NATURAL | 1 | PART NO. 112725 | | | | | |
| 1 | BODY | BRASS | NICKEL | 1 | | | | | | |
| <small>UNLESS OTHERWISE SPECIFIED TOLERANCES FOR MILLIMETERS ARE: 0.5 - 8mm ± 0.20mm 8 - 30mm ± 0.40mm 30 - 120mm ± 0.50mm UNLESS OTHERWISE SPECIFIED TOLERANCES FOR INCHES ARE: .020 - .315 = ± 0.007" .315 - 1.180 = ± 0.015" 1.180 - 4.724 = ± 0.020"</small> | | | | | CAD FILE C:/112/112725.DWG | | DWG. NO. 112725.DWG | REV. NC | SIZE A | SCALE NA |
| DESCRIPTION MATERIAL FINISH QTY DO NOT SCALE DRAWING | | | | | | | | | | |