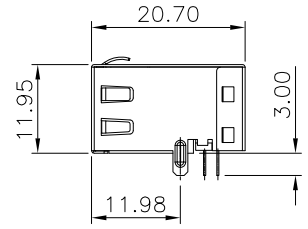
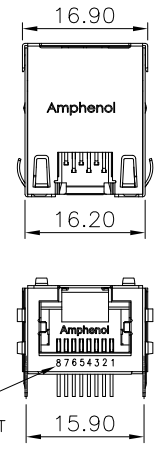
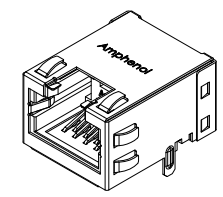


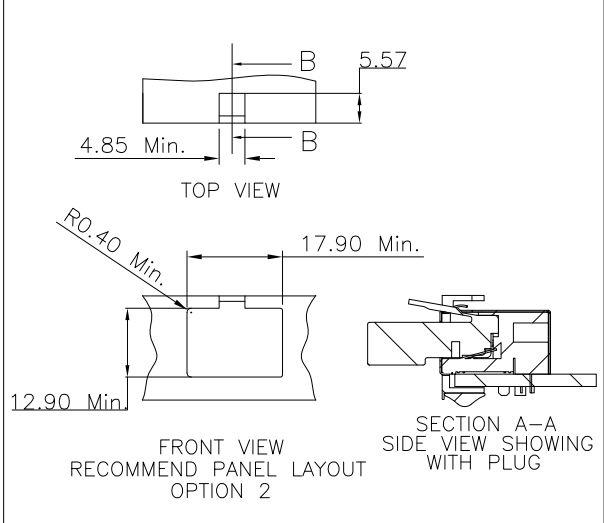
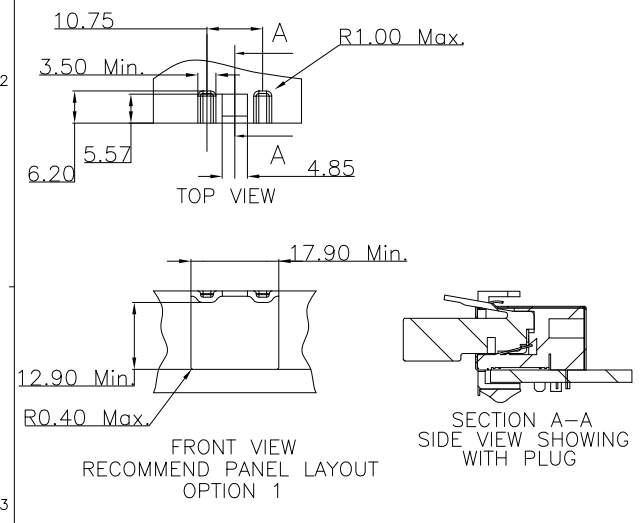
REVISIONS			
REV	ECN, ERN NO.	DATE	APPRD.
A	PROPOSAL DRAWING	JUL22/13	A.G.



PIN NUMBERS SHOW FOR REFERENCE ONLY, IT DOES NOT SHOW ON ACTUAL PART

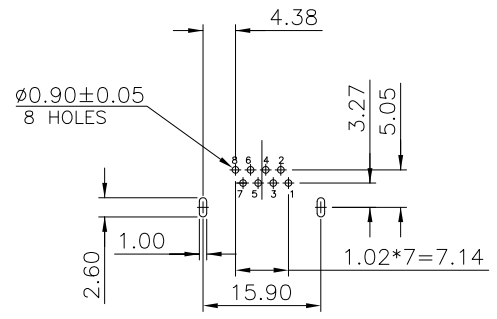
- NOTES:
- ELECTRICAL:**
- VOLTAGE RATING : 125 VAC.
 - CURRENT RATING : 1.25 AMP.
 - INSULATING RESISTANCE : 500 MEGOHMS MINIMUM.
 - DIELECTRIC STRENGTH : 1000 VAC 60Hz, 1MIN.
 - CATEGORY 5E CHARACTERISTIC:

FREQUENCY MHz	NEAR-END CROSSTALK dB, MIN.	RETURN LOSS dB, MIN.	ATTENUATION dB, MAX.
1.0	65	30	0.1
4.0	65	30	0.1
8.0	64.9	30	0.1
10.0	63	30	0.1
16.0	58.9	30	0.2
20.0	57	30	0.2
25.0	55	30	0.2
31.25	53.1	30	0.2
62.5	47.1	24.1	0.3
100.0	43	20	0.4



- MECHANICAL:**
- SHIELD : STAINLESS STEEL, WITH TIN-DIP ON SOLDER TABS.
 - HOUSING : HIGH TEMP THERMOPLASTIC. UL 94V-0.
 - INSERT : HIGH TEMP THERMOPLASTIC UL 94V-0.
 - PCB : FR-4.
 - CONTACT : PHOSPHOR BRONZE, 30u" SELECTIVE GOLD PLATING FOR MATING SURFACE, 50u" NICKEL UNDERPLATE, 100u" MATTE TIN PLATING ON CONTACT SOLDER TAIL.

- ENVIRONMENTAL:**
- STORAGE : -40° TO +85°.
 - OPERATION : -40° TO +85°.
- MATES WITH MODULAR PLUG CONFORMING TO FCC PART 68, SUBPART F.
RECOMMENDED SOLDER PROCESS: WAVE SOLDER, PEAK TEMPERATURE 260° FOR 10 SECOND.



RECOMMENDED PCB LAYOUT TOLERANCE: ±0.05mm.



AMPHENOL PART NUMBER: RJE48-188-1X01
GOLD PLATING OPTION

1=6u" [0.15 MICRONS] GOLD PLATING
2=15u" [0.38 MICRONS] GOLD PLATING
3=30u" [0.76 MICRONS] GOLD PLATING
4=50u" [1.27 MICRONS] GOLD PLATING

UNLESS OTHERWISE SPECIFIED DIMENSION ARE IN mm FRACTION DECIMALS ANGLES		DRAWN <i>B.COPPING</i>	DATE <i>JUL18/13</i>
.X ±0.50	.X° ±3.0°	DESIGNED	
.XX ±0.30	.X° ±2.0°	CHECKED <i>A.GREEN</i>	<i>JUL22/13</i>
.XXX ±0.10	.XX° ±1.0°	I. E. APPRD.	
		Q. A. APPRD.	
		DWG. APPRD.	
		ENG. REL. NO.	
		REF.	
		DIMENSIONS ARE IN <i>mm</i>	CODE ID. NO. <i>03554</i>

Amphenol Canada Corp.

TITLE
MODULAR JACK, SINGLE PORTS, 8 POSITIONS, 8 CONTACTS, SHIELDED WITH TOP & SIDE TABS, NO LEDS, TAB UP, CAT5E

DWG. DRAWING NO. *P-RJE48-188-1X01*

REV. *A*

SCALE *4/1* WT. _____ SURF. _____ SHEET *1* OF *1*

THIS DOCUMENT CONTAINS PROPRIETARY INFORMATION AND SUCH INFORMATION MAY NOT BE DISCLOSED TO OTHERS FOR ANY PURPOSE OR USED FOR MANUFACTURING PURPOSES WITHOUT WRITTEN PERMISSION FROM AMPHENOL CANADA CORP.

