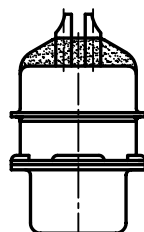
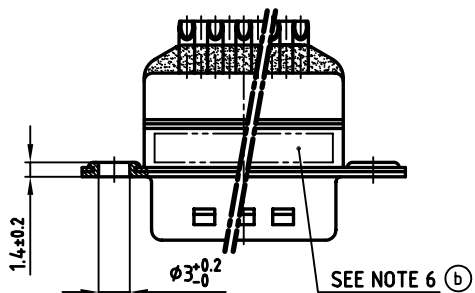
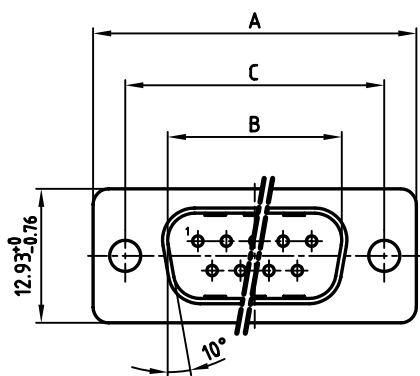
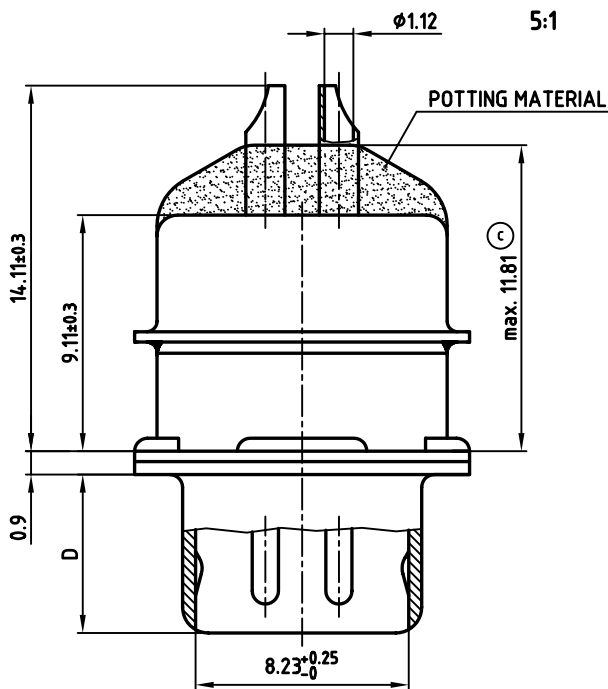


used for: D-SUB  $\pi$  FILTER

No. of pos.	A $-0.76$	B $+0.25$	C	D $-0.3$	Part No.
9	31.19	16.79	25.00 $^{+0.12}_{-0.13}$	6.12	241A29200X
15	39.52	25.12	33.30 $^{+0.15}_{-0.1}$	6.12	241A29210X
25	53.42	38.84	47.04 $\pm 0.13$	5.99	241A29220X
37	69.70	55.30	63.50 $\pm 0.13$	5.99	241A29230X



**NOTES:**

- METALSHELLS: STEEL; min. 315 $\mu$ m TIN over 40-80 $\mu$ m NICKEL
- INSULATORS: HIGH TEMPERATURE PLASTIC UL 94 V-0, BLACK
- CONTACTS: COPPER ALLOY  
PLATING: 8 $\mu$ m HARD GOLD over min. 50 $\mu$ m NICKEL  
SOLDER CUP ACCEPTS CABLE AWG 20
- CAPACITANCE: 2 x 1300pF  $\pm 20\%$
- DIELECTRIC WITHSTANDING VOLTAGE: 424 VDC
- CONNECTOR IS PART MARKED: PART-NO. CONEC ABC



APPROVAL # FREIGABE # DEBLOCAGE # AUTORIZACION # APPROVAL	
CUSTOMER APPROVAL DATE:	
NAME:	TITLE:
COMPANY NAME:	
APPROVAL # FREIGABE # DEBLOCAGE # AUTORIZACION # APPROVAL	

THIS DRAWING MAY NOT BE COPIED OR REPRODUCED IN ANY WAY, AND MAY NOT BE PASSED ON TO A THIRD PARTY, WITHOUT WRITTEN PERMISSION. OWNERSHIP AND COPYRIGHT OF CONEC GmbH DO NOT ALTER CAD DRAWING BY HAND

rev.	description	date	name	tolerance
1 x c	Ä 2725	13.06.2007	Lehmen	d-old
1 x b	Ä 2311	07.09.2005	Lehmen	
a	Origin			

scale:	2:1 (5:1)
material:	SEE NOTES
title: <b>D-SUB <math>\pi</math> FILTER MALE</b> 9-37pos. SOLDER CUP	
dwg no:	AutoCAD 2000
<b>24K2A134A</b>	
part no:	SEE TABLE
DIN-A	3
sh:	2/2

