

REVISIONS

REV.	ECN	DESCRIPTION	DATE	APPROVED
A		PRO TO TYPE	X	J.SI
B		PRODUCTION WITH HARD TOOLING	NOV 03/20	J.SI
C		UPDATED DRAWING	04-JUL-22	J.SI

MATERIAL:
 CAGE:
 COPPER ALLOY
 PLATING: 2.54um MIN. NICKEL

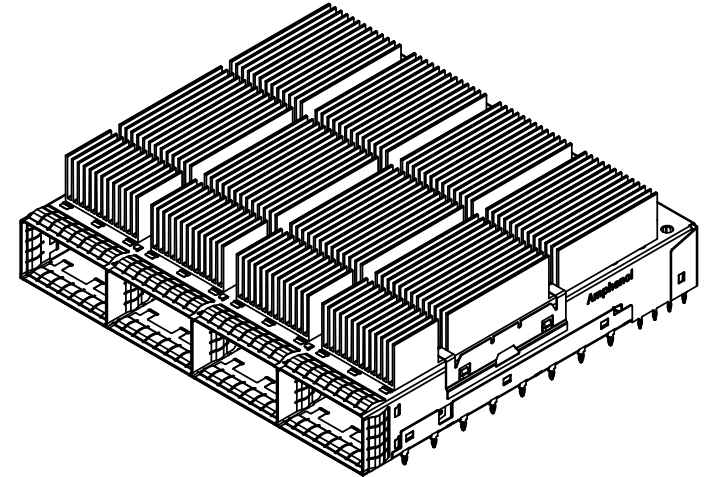
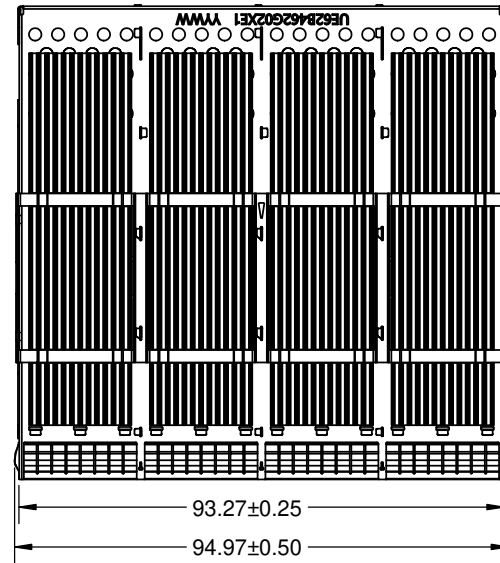
HEATSNK:
 ALUMINUM
 PLATING: NICKEL

HEATSNK CLIP:
 STAINLESS STEEL

PACKAGING:
 TRAY PACKAGING

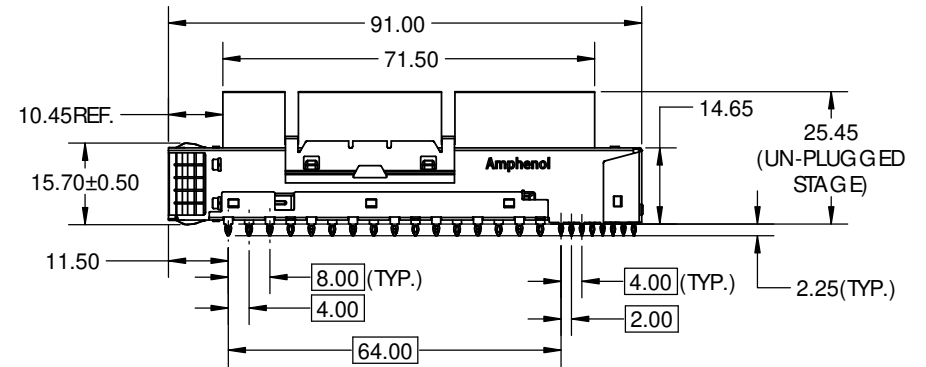
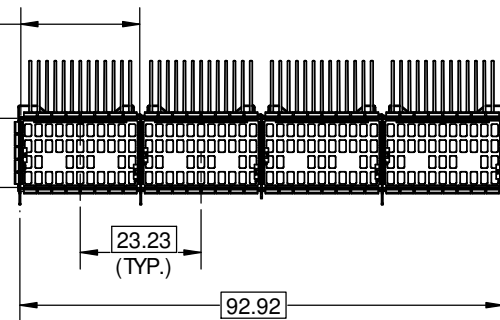
AMPHENOL PART NUMBER:
 UE62-B462G-021E1

(CAGE DESIGNED GOOD FOR
 B-B APPLICATION)



22.88±0.10 (TYP.)
 (PORT INTERNAL WIDTH
 WITH EMI FINGERS
 FULLY COMPRESSED)

13.30±0.10 (TYP.)
 (PORT INTERNAL WIDTH
 HEIGHT EMI FINGERS
 FULLY COMPRESSED)



DO NOT SCALE DRAWING

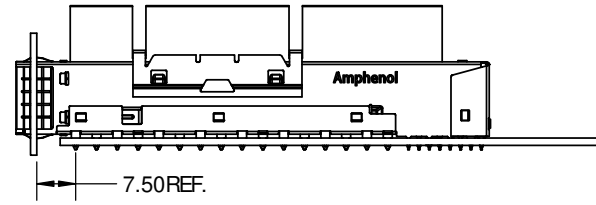
THIS DOCUMENT CONTAINS PROPRIETARY INFORMATION AND SUCH INFORMATION MAY NOT BE DISCLOSED TO OTHERS FOR ANY PURPOSE OR USED FOR MANUFACTURING PURPOSES WITHOUT PERMISSION FROM AMPHENOL CANADA CORP.



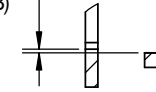
UNLESS OTHERWISE SPECIFIED DIMENSIONS ARE IN MILLIMETERS TOLERANCES ARE:		APPROVALS	DATE	Amphenol High Speed Interconnects A Division of Amphenol Corp. www.amphenol-highspeed.com	
DECIMALS X.X ± 0.25 X.XX ± 0.15	ANGLES ± 0.5°	DRAWN J.SI	JUN26/20	TITLE	
MATERIAL AND FINISH		DESIGNED		1X4 OSFP CAGE ASSEMBLY WITH ADDITIONAL RHS	
REF.		CHECKED	X	X	
CODE IDENT. NO. 03554		QA APPD			
		IE APPD		SIZE A3	DWG. NO. P-UE62-B462G-021E1
		DWG APPD		SCALE 1:1	PROJECT REV. C
					SHEET 1 OF 5

REVISIONS

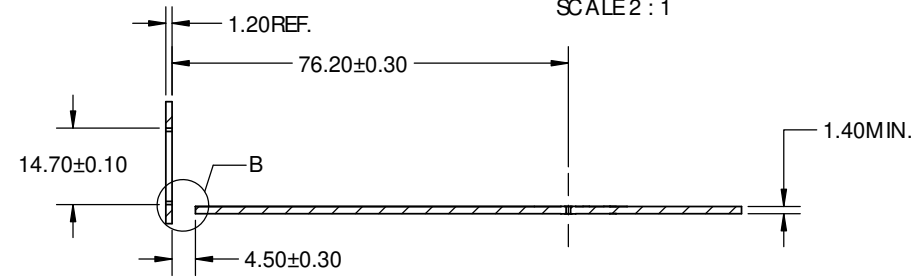
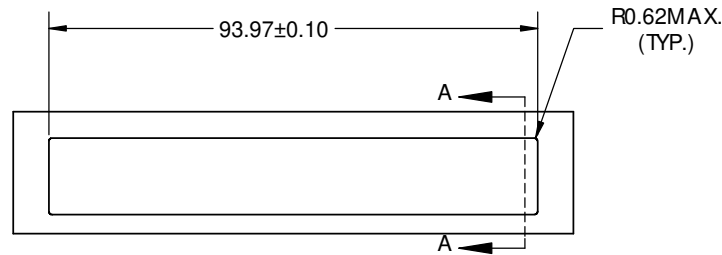
REV.	ECN	DESCRIPTION	DATE	APPROVED
A		PRO TO TYPE	X	J.SI
B		PRODUCTION WITH HARD TOOLING	NOV 03/20	J.SI
C		UPDATED DRAWING	04-JUL-22	J.SI



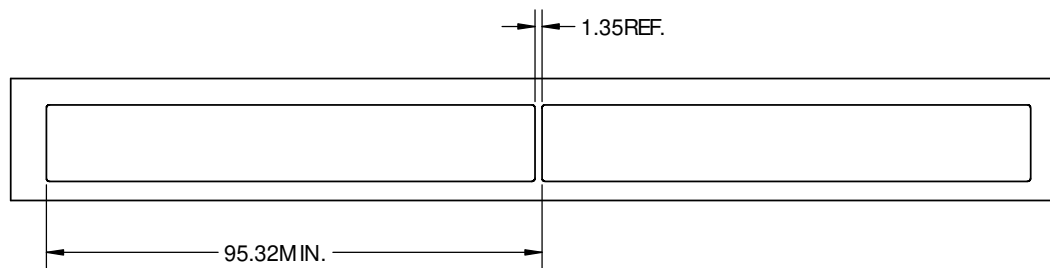
0.35±0.10
(PANEL CUTOUT
ABOVE PCB)



DETAIL B
SCALE 2 : 1



SECTION A-A

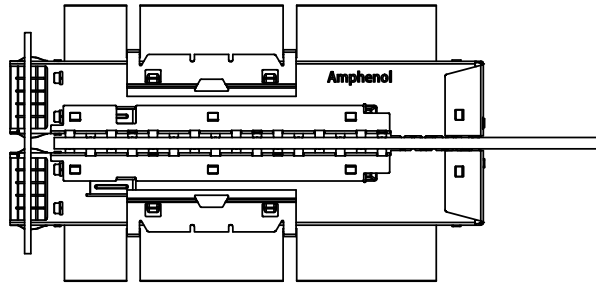


DO NOT SCALE DRAWING

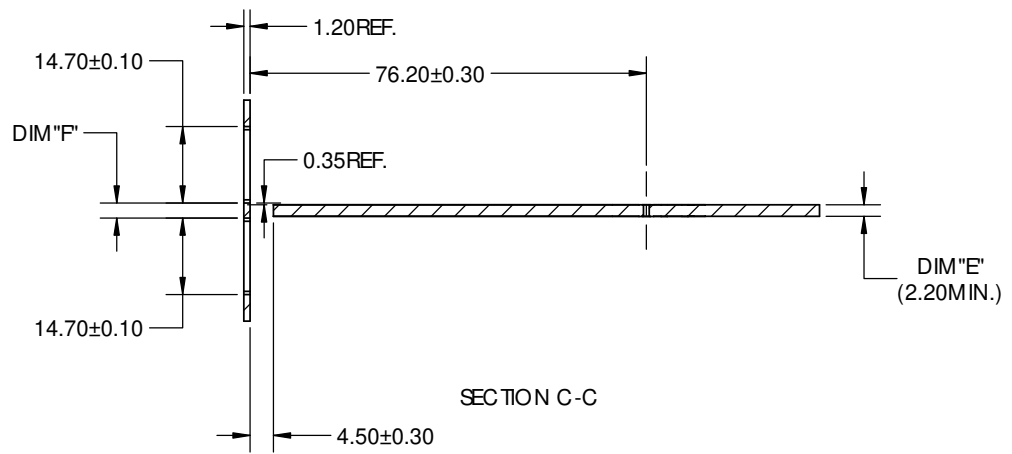
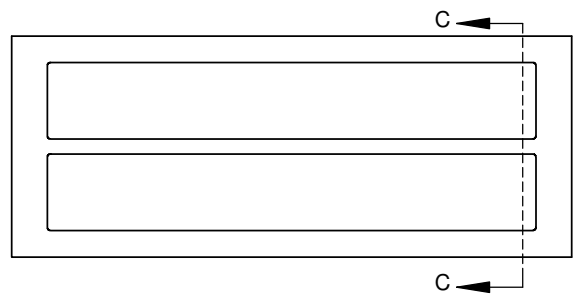
THIS DOCUMENT CONTAINS PROPRIETARY INFORMATION AND SUCH INFORMATION MAY NOT BE DISCLOSED TO OTHERS FOR ANY PURPOSE OR USED FOR MANUFACTURING PURPOSES WITHOUT PERMISSION FROM AMPHENOL CANADA CORP.

UNLESS OTHERWISE SPECIFIED DIMENSIONS ARE IN MILLIMETERS TOLERANCES ARE: DECIMALS ANGLES X.X ± 0.25 ± 0.5° X.XX ± 0.15 MATERIAL AND FINISH REF. CODE IDENT. NO. 03554	APPROVALS	DATE	Amphenol High Speed Interconnects <small>A Division of Amphenol Corp. www.amphenol-highspeed.com</small>	
	DRAWN	J.SI	JUN26/20	TITLE
	DESIGNED			1X4 OSFP CAGE ASSEMBLY WITH ADDITIONAL RHS
	CHECKED	X	X	
IE APPD			SIZE	DWG. NO.
DWG APPD			A3	P-UE62-B462G-021E1
			SCALE	1:1
			PROJECT	SHEET
				2 OF 5

REVISIONS				
REV.	ECN	DESCRIPTION	DATE	APPROVED
A		PROTO TYPE	X	J.SI
B		PRODUCTION WITH HARD TOOLING	NOV 03/20	J.SI
C		UPDATED DRAWING	04-JUL-22	J.SI



NOTE:
 PANEL CUTO UT SIZES PER OSFP MSA SPEC. FOR BELLY TO BELLY MOUNTING, DIM "E" (PCB THICKNESS) IS 2.20 mm MIN. DIM "F" RELATED TO DIM "E". FOR DIM "F" = DIM "E" + 0.70 mm. THE PANEL CUTO UT 14.70 mm MIGHT BE INCREASED UP TO 15.10 mm IN ORDER TO ACCOMODATE PCB TOLERANCE.



UNLESS OTHERWISE SPECIFIED DIMENSIONS ARE IN MILLIMETERS TOLERANCES ARE:		APPROVALS		DATE	Amphenol High Speed Interconnects A Division of Amphenol Corp. www.amphenol-highspeed.com		
DECIMALS X.X ± 0.25 X.XX ± 0.15	ANGLES ± 0.5°	DRAWN	J.SI	JUN26/20	1X4 OSFP CAGE ASSEMBLY WITH ADDITIONAL RHS		
MATERIAL AND FINISH	CHECKED	QA APPD	X	X			
REF.	IE APPD	SCALE	1:1	DWG. NO. P-UE62-B462G-021E1			REV. C
CODE IDENT. NO. 03554	DWG APPD	PROJECT		SHEET 3 OF 5			

DO NOT SCALE DRAWING

THIS DOCUMENT CONTAINS PROPRIETARY INFORMATION AND SUCH INFORMATION MAY NOT BE DISCLOSED TO OTHERS FOR ANY PURPOSE OR USED FOR MANUFACTURING PURPOSES WITHOUT PERMISSION FROM AMPHENOL CANADA CORP.

REVISIONS				
REV.	ECN	DESCRIPTION	DATE	APPROVED
A		PRO TO TYPE	X	J.SJ
B		PRODUCTION WITH HARD TOOLING	NOV 03/20	J.SJ
C		UPDATED DRAWING	04-JUL-22	J.SJ

THIS AREA DENOTES COMPONENTS KEEP-OUT AND SURFACE TRACE PERMITTED

$\varnothing 0.71 \pm 0.05 (20X)$
(PLATED HOLES)
 $\varnothing 0.05$ H E F G

SEE CONNECTOR FOR DETAILED DIMS

$\varnothing 1.05 \pm 0.05$
(PLATED HOLE)
 $\varnothing 0.05$ M E F G
-H-

CROSS-HATCHED AREA DENOTES COMPONENTS KEEP-OUT AND SURFACE TRACE KEEP-OUT (EXCEPT CHASSIS GROUND)

$\varnothing 1.05 \pm 0.05 (39X)$
(PLATED HOLES)
 $\varnothing 0.05$ H E F G

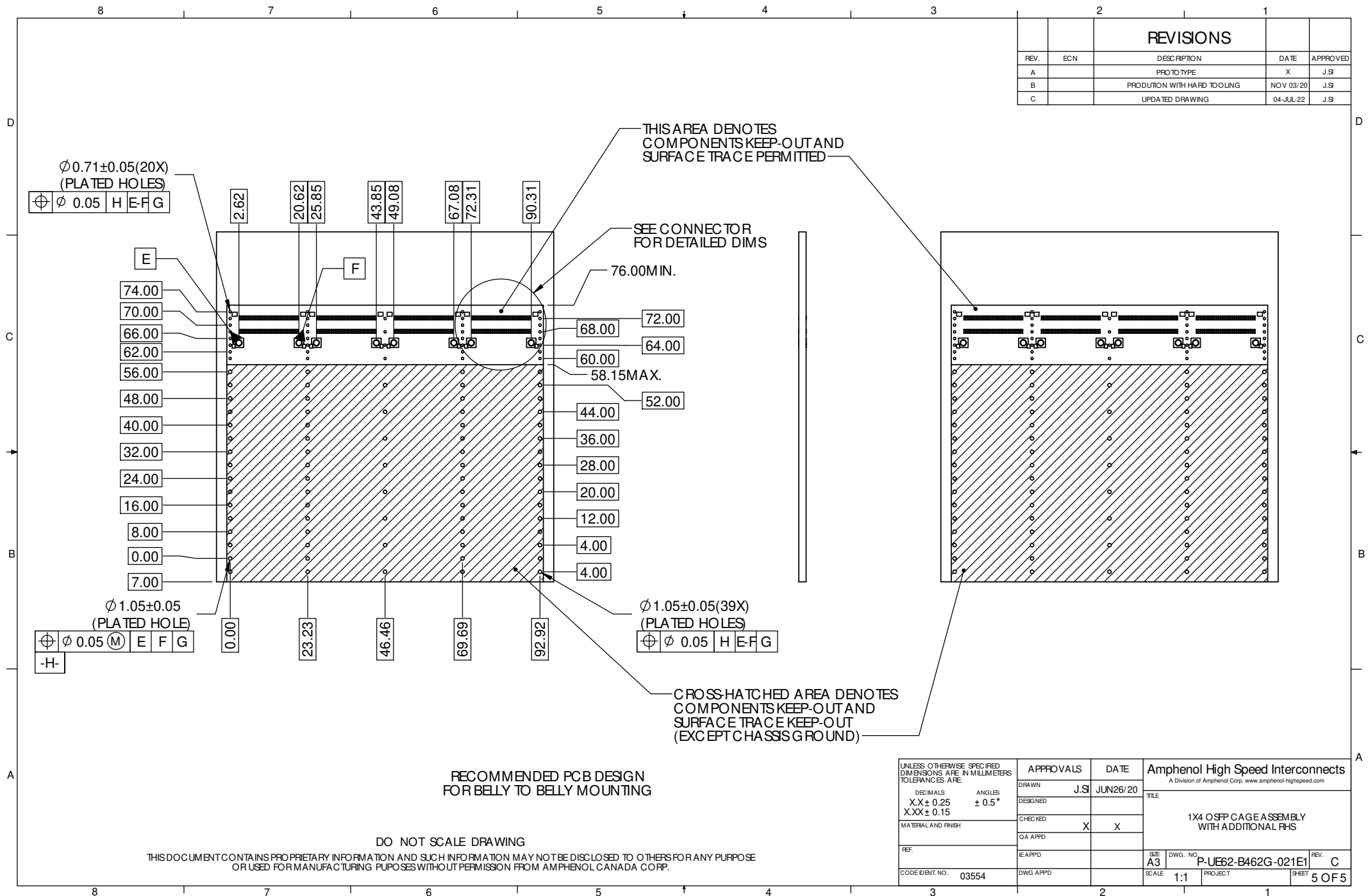
RECOMMENDED PCB DESIGN FOR SINGLE SIDE MOUNT

DO NOT SCALE DRAWING

THIS DOCUMENT CONTAINS PROPRIETARY INFORMATION AND SUCH INFORMATION MAY NOT BE DISCLOSED TO OTHERS FOR ANY PURPOSE OR USED FOR MANUFACTURING PURPOSES WITHOUT PERMISSION FROM AMPHENOL CANADA CORP.

UNLESS OTHERWISE SPECIFIED DIMENSIONS ARE IN MILLIMETERS TOLERANCES ARE: DECIMALS X.X ± 0.25 X.XX ± 0.15 MATERIAL AND FINISH REF. CODE IDENT. NO. 03554	APPROVALS	DATE	Amphenol High Speed Interconnects <small>A Division of Amphenol Corp. www.amphenol-highspeed.com</small>	
	DRAWN J.SJ	JUN26/20	TITLE	
	DESIGNED		1X4 OSFP CAGE ASSEMBLY WITH ADDITIONAL RHS	
	CHECKED X	X		
GA APPD		SIZE A3	DWG. NO. P-UE62-B462G-021E1	REV. C
DWG APPD		SCALE 3:2	PROJECT	SHEET 4 OF 5

REVISIONS				
REV.	ECN	DESCRIPTION	DATE	APPROVED
A		PROTO TYPE	X	J.SI
B		PRODUCTION WITH HARD TOOLING	NOV 03/20	J.SI
C		UPDATED DRAWING	04-JUL-22	J.SI



**RECOMMENDED PCB DESIGN
FOR BELLY TO BELLY MOUNTING**

DO NOT SCALE DRAWING

THIS DOCUMENT CONTAINS PROPRIETARY INFORMATION AND SUCH INFORMATION MAY NOT BE DISCLOSED TO OTHERS FOR ANY PURPOSE OR USED FOR MANUFACTURING PURPOSES WITHOUT PERMISSION FROM AMPHENOL CANADA CORP.

<small>UNLESS OTHERWISE SPECIFIED DIMENSIONS ARE IN MILLIMETERS TOLERANCES ARE:</small> DECIMALS X.X ± 0.25 X.XX ± 0.15 MATERIAL AND FINISH REF. CODE IDENT. NO. 03554	APPROVALS	DATE	Amphenol High Speed Interconnects <small>A Division of Amphenol Corp. www.amphenol-highspeed.com</small>	
	DRAWN J.SI	JUN26/20	TITLE	
	DESIGNED		1X4 OSFP CAGE ASSEMBLY WITH ADDITIONAL PHS	
	CHECKED X	X	SIZE A3	DWG. NO. P-UE62-B462G-021E1
	GA APPD		SCALE 1:1	PROJECT SHEET 5 OF 5