

4

3

2

1


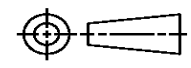
THIS DRAWING IS UNPUBLISHED. RELEASED FOR PUBLICATION  
© COPYRIGHT ALL RIGHTS RESERVED.

LOC		DIST		REVISIONS			
P	LTR	DESCRIPTION		DATE	DWN	APVD	
	R1	ECR-15-007161		09MAY2015	GK	HMR	

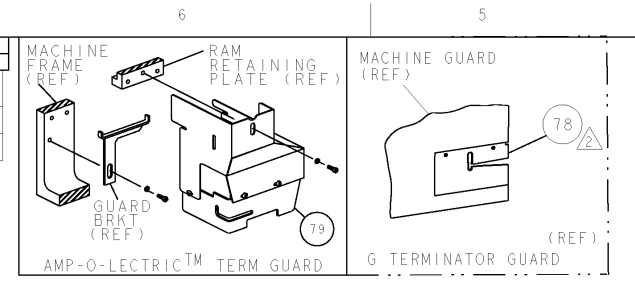
# REPLACED BY OCEAN STYLE APPLICATOR PART NUMBER 2150278-2

FOR REPLACEMENT PARTS FOR APPLICATOR 567083  
REFER TO ADDITIONAL PAGE(S). SPARE PARTS KIT (IF LISTED)  
WILL REMAIN AVAILABLE.

THE REPLACEMENT OCEAN STYLE APPLICATOR HAS THE  
SAME TERMINATOR/PRESS INTERFACE AS APPLICATOR  
567083

THIS DRAWING IS A CONTROLLED DOCUMENT.		DWN	GOPALAKRISHNA HV			TE Connectivity			
DIMENSIONS:		CHK	RAGHAVENDRA			NAME			
		TOLERANCES UNLESS OTHERWISE SPECIFIED:		APVD	END FEED HDM APPLICATOR				
		0 PLC ±	1 PLC ±	RAGHAVENDRA		PRODUCT SPEC			
MATERIAL		2 PLC ±	3 PLC ±	APPLICATION SPEC		SIZE	CAGE CODE	DRAWING NO	RESTRICTED TO
FINISH		4 PLC ±	ANGLES ±	WEIGHT		A3		©- 567083	
				CUSTOMER DRAWING		SCALE	SHEET 1 OF 2	REV R1	

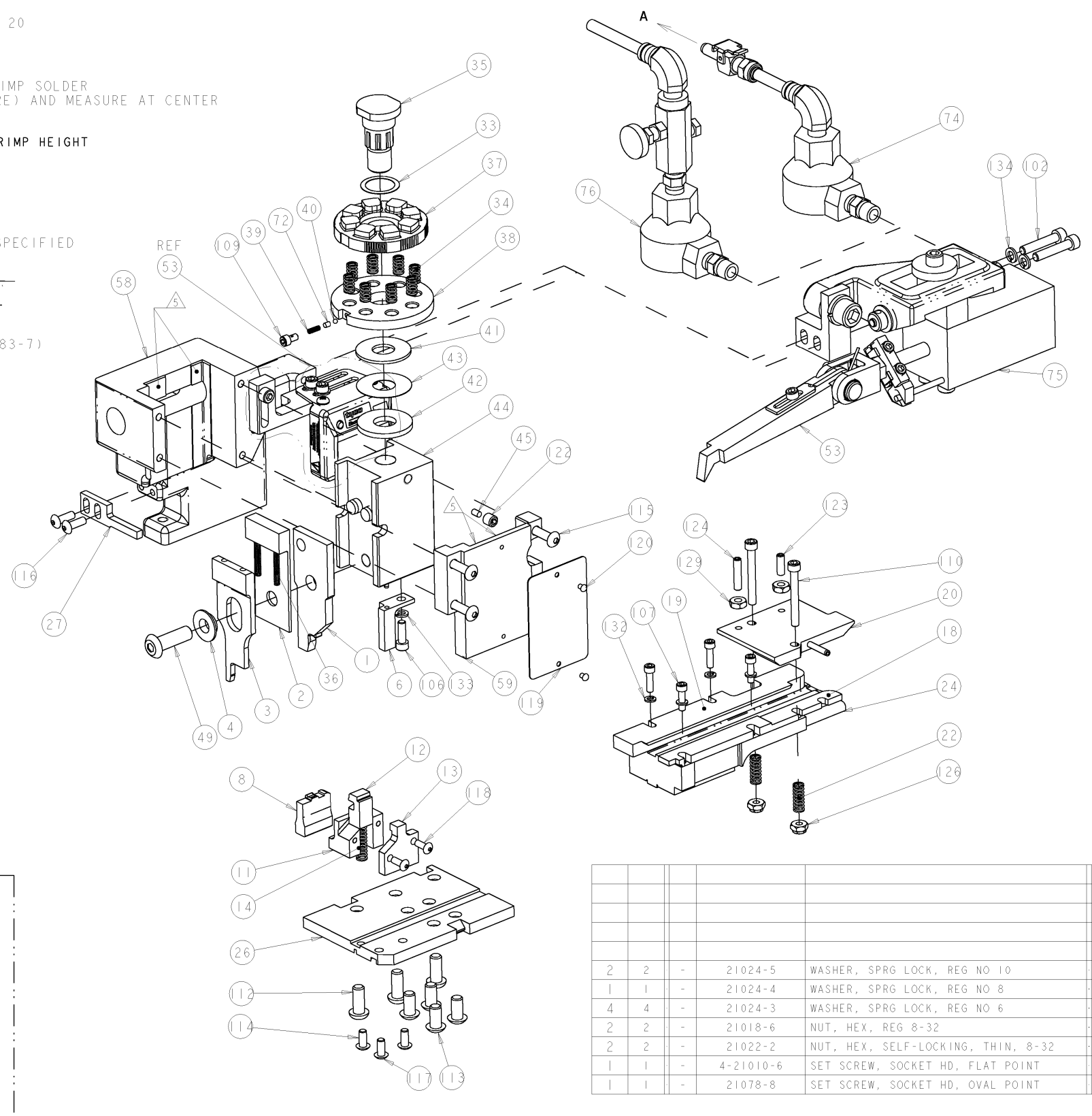
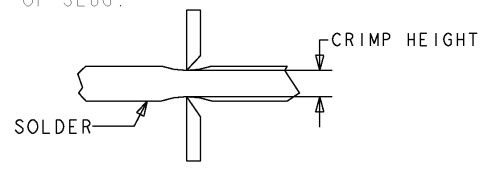
8		7		6		5		4		3		2		1		Active
THIS DRAWING IS UNPUBLISHED. RELEASED FOR PUBLICATION 2007																
COPYRIGHT 2007 BY TYCO ELECTRONICS CORPORATION. ALL RIGHTS RESERVED.																
PART NUMBER	REV	FIRST USED	POWER UNIT	FEED TYPE												
567083-1	R	-	LEADMAKER	AIRFEED												
567083-2	R	-	AMP-O-LECTRIC	AIRFEED												



TERMINAL NAME: ULTRA-FAST FLAG .187									
TE TERMINAL - TE CRIMP SPECS									
-	520334								
-	520336								
-	-	PAD LTR	CRIMP HEIGHT	WIRE SIZE	Ø SOLDER				
-	-	A	.070±.002	18	Ø.19/6				
-	-	B	.065±.002	22 OR 20	Ø.19/6				
-	-	C	-	-	-				
-	-	D	-	-	-				
-	-	CRIMP	SIZE	TYPE	RANGE				
-	-	WIRE	.201	D	22-18				
-	-	INSUL	-	-	.165 MAX				
WIRE STRIP LENGTH	TERM APPL SPEC	FEED	APPL INSTRUCTIONS	SET UP GAGE	LAYOUT				
	114-2123	.680	A1 8056	458638-2	1191				

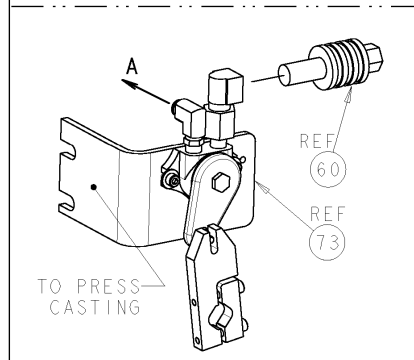
LOC	DIST	REV	DESCRIPTION	DATE	BY	APPV
A	66	N	ECR-07-003348	12FEB2007	BW	TM
		P	ECR-07-019426	17AUG2007	MY	GB
		R	ECR-07-020139	23AUG2007	MY	GB

- ONLY THE ITEMS WITH QUANTITIES SPECIFIED ON PARTS LIST ARE USED ON THIS APPLICATOR.
- △ GUARD MUST BE IN PLACE WHEN OPERATING APPLICATOR IN AMP-O-LECTRIC PRESS.
- △ RECOMMENDED SPARE PARTS.
- △ LUBRICATE DAILY USING NO. 20 MACHINE OIL.
- △ GREASE LIGHTLY.
- △ TO CHECK CRIMP HEIGHT, CRIMP SOLDER (3/16 DIA 60/40 SOLID CORE) AND MEASURE AT CENTER OF SLUG.
7. ITEMS WITH A QTY OF REF SPECIFIED ARE USED ON ITEM 48.
- △ CUT TO LENGTH AT ASSEMBLY.
- △ ITEMS 70 & 71 ARE USED ON G TERMINATOR ONLY.
- △ SPARE TOOLING KIT (7-567083-7)



2	2	-	21024-5	WASHER, SPRG LOCK, REG NO 10	134
1	1	-	21024-4	WASHER, SPRG LOCK, REG NO 8	133
4	4	-	21024-3	WASHER, SPRG LOCK, REG NO 6	132
2	2	-	21018-6	NUT, HEX, REG 8-32	129
2	2	-	21022-2	NUT, HEX, SELF-LOCKING, THIN, 8-32	126
1	1	-	4-21010-6	SET SCREW, SOCKET HD, FLAT POINT	124
1	1	-	21078-8	SET SCREW, SOCKET HD, OVAL POINT	123

1	1	-	21009-2	SCR, SET, SELF LOCKING 1/4-20 X .250	122
2	2	-	21017-1	SCREW, DRIVE	120
1	1	-	461264-1	PLATE, IDENTIFICATION	119
2	2	-	1-21002-7	SCR, BTN SKT HD CAP 6-32 X .375	118
2	2	-	2-21002-1	SCR, BTN SKT HD CAP 8-32 X .375	117
2	2	-	2-21002-2	SCR, BTN SKT HD CAP 8-32 X .500	116
REF	REF	-	2-21002-9	SCR, BTN SKT HD CAP 10-32 X .750	115
1	1	-	22733-8	SCR, BHSC, SELF-LOCKING, 8-32 X .375	114
4	4	-	3-21002-3	SCR, BTN SKT HD CAP 1/4-20 X .500	113
REF	REF	-	17177-1	SCR, BTN HD SKT CAP (1/4-20x.62)	112
2	2	-	8-21909-7	SCR, SKT HD CAP 8-32 X 1.375	110
1	1	-	23030-1	SCR, SKT HD CAP, S-LOCK, 6-32 X .25	109
4	4	-	2-21000-0	SCR, SKT HD CAP 6-32 X .500	107
1	1	-	2-21000-7	SCR, SKT HD CAP 8-32 X .500	106
2	2	-	3-21000-9	SCR, SKT HD CAP 10-32 X 1.000	102
1	-	-	455750-7	GUARD ASSEMBLY	79
-	-	-	679532-1	INSERT, GUARD	78
1	-	-	692655-5	AIR FEED VALVE ASSEMBLY	76
1	1	-	460277-3	AIR FEED ASSY	75
-	1	-	692655-7	AIR FEED VALVE ASSEMBLY	74
REF	-	-	692655-1	AIR FEED VALVE ASSY	73
1	1	-	690603-1	SPRING ASSIST AMP-O-MATOR APPLICATOR	72
REF	-	-	24042-2	VALVE, SHUT-OFF	60
REF	REF	-	467284-1	CAP, RAM	59
REF	REF	-	683742-1	HOUSING, APPLICATOR	58
1	1	-	1-460680-2	FEED FINGER ASSEMBLY	53
1	1	-	690686-2	CRIMPER, BOLT SPECIAL	49
1	1	-	816186-1	APPLICATOR, BASIC SUB-ASSY	48
1	1	-	690191-1	PLUG, NYLON	45
1	1	-	683741-1	RAM	44
1	1	-	690125-1	SHIM SUB-ASSY	43
1	1	-	690124-1	WASHER, RAM (.115)	42
1	1	-	690124-5	WASHER, RAM (.062)	41
1	1	-	23241-6	BALL, STEEL	40
1	1	-	690170-1	SPRING, COMPRESSION	39
1	1	-	462426-1	DISC, SPRING	38
1	1	-	462425-1	WIRE DISC	37
2	2	-	5-22278-1	SPRING, COMPRESSION	36
1	1	-	690212-1	POST, RAM	35
8	8	-	2-22280-5	SPRING, COMPRESSION	34
1	1	-	22480-5	WASHER, WAVE SPRING	33
1	1	-	690455-3	STRIPPER, FRONT CASTING	27
REF	REF	-	467286-2	PLATE, BASE	26
1	1	-	467285-1	PLATE, GUIDE, STRIP	24
2	2	-	2-22280-9	SPRING, COMPRESSION	22
1	1	-	467283-1	DRAG	20
1	1	-	683736-1	GUIDE, STRIP, REAR	19
1	1	-	683737-1	FRONT STRIP GUIDE	18
1	1	-	3-22280-3	SPRING, COMPRESSION	14
1	1	-	467281-1	RETAINER, SHEAR, FLOATING	13
1	1	-	467500-1	SHEAR, FLOATING	12
1	1	-	467501-1	HOLDER, SHEAR, FLOATING	11
1	1	-	806217-1	ANVIL, RIGHT HAND	8
1	1	-	467499-2	SHEAR DEPRESSOR	6
1	1	-	238009-1	BLOCK, FL CRIMPER SPACER	4
1	1	-	467282-3	STABILIZER	3
1	1	-	462842-1	SPACER	2
1	1	-	467342-3	CRIMPER, RIGHT HAND	1



DIMENSIONS:		TOLERANCES UNLESS OTHERWISE SPECIFIED:		DWG: B. WEAVER 30JAN2007		CHK: T. ELBIN 30JAN2007		APVD: T. ELBIN 30JAN2007		NAME: END FEED HDM APPLICATOR	
IN	0 PLC	±		SIZE	CASE CODE	DRAWING NO	RESTRICTED TO				
	1 PLC	±		SCALE	A	00779	567083				
	2 PLC	±		WEIGHT							
	3 PLC	±		CUSTOMER DRAWING							
	4 PLC	±									
	ANGLES	±									
	FINISH										